



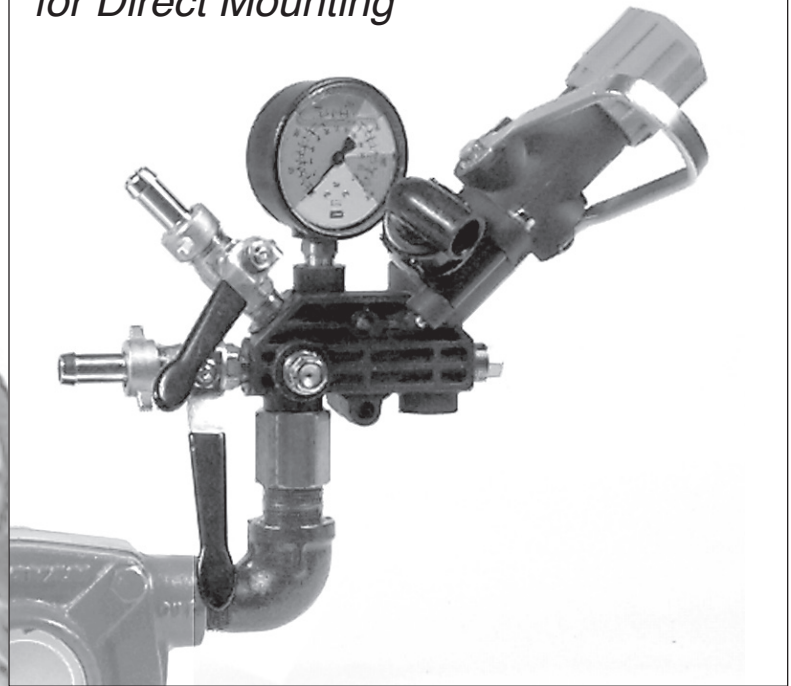
6010.25 (/HP) & 6010.26 (/HP) *Pump or Remote Mounted Control Unit*

A UNIQUE PRODUCT THAT CAN BE USED WITH A VARIETY OF PUMPS, INCLUDING ROLLER PUMPS, PISTON PUMPS, PLUNGER PUMPS, AND DIAPHRAGM PUMPS

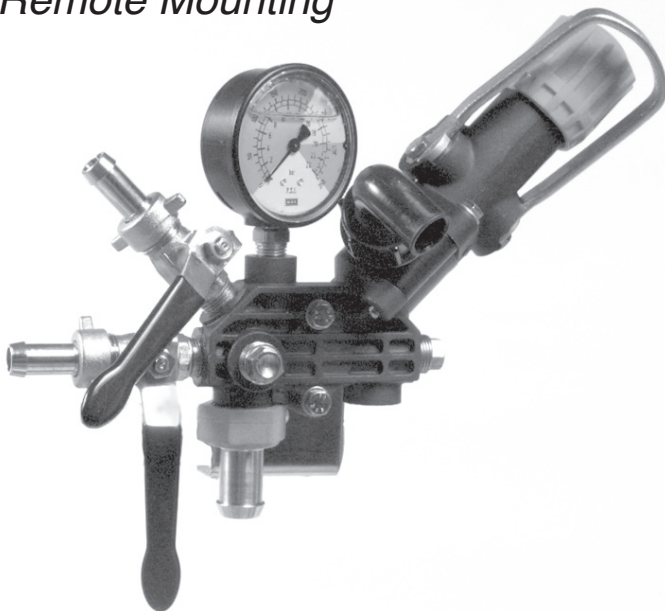
FEATURES

- Manual Dump Valve
- Adjustable Pressure Regulator
- Two Ball Valve Outlets with 1/2" Hose Barbs
- Three Color Glycerine Pressure Gauge
- Liquid Handling Parts Are Black Anodized Aluminum, Glass Filled Nylon, and Stainless Steel
- Compact, Efficient Design

Model 6010.25 *for Direct Mounting*



Model 6010.26 *for Remote Mounting*

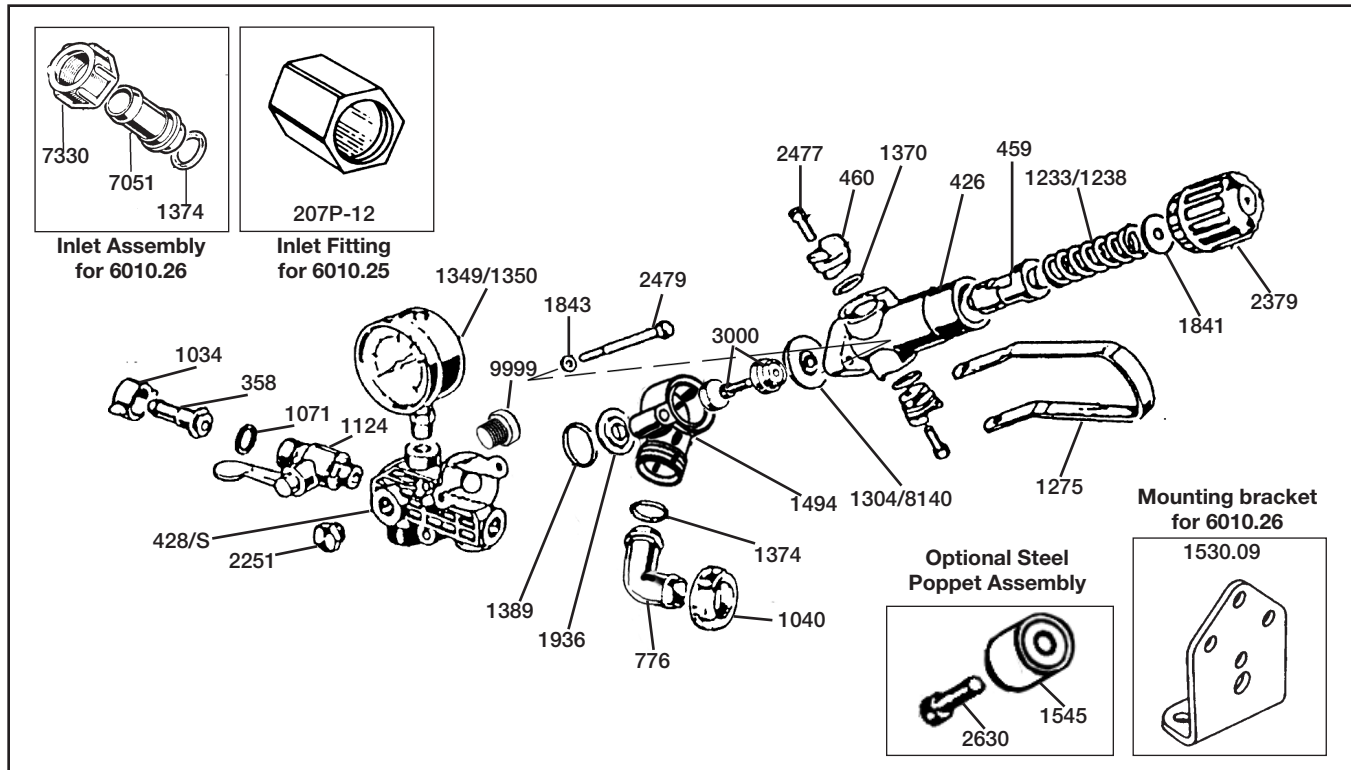


SPECIFICATIONS

GPM Range.....	3-20
PSI Range	
Standard.....	20-300
HP Version.....	10-500
Inlet Port	
Model 6010.25	3/4" FNPT
Model 6010.26	3/4" Hose Barb
By-pass	3/4" Hose Barb Elbow
Outlet.....	Two 1/2" Ball Valves with 1/2" Straight Hose Barbs
Optional Outlets	
3/8" Elbow Hose Barb	Part # 163.604.4
1/2" Elbow Hose Barb	Part # 163.604.6

UDOR U.S.A., INC.
 500 Apollo Drive
 Lino Lakes, MN 55014
 TEL. (651) 785-0666
 FAX. (800) 732-2670
 www.udorusa.com

OPERATING INSTRUCTIONS/PARTS LIST FOR 6010.25 & 6010.26 CONTROL UNITS



REF#	PART#	DESCRIPTION	QTY	REF#	PART#	DESCRIPTION	QTY
358	0202.19	1/2' Hose Barb	2	1374	1101.12	O-Ring	1
426	0204.40	Valve Body	1	*1389	1101.41	O-Ring	1
428/S	0204.48/TP	Main Body (Universal Control Only)	1	1494	1203.33	R.V. Body	1
459	0205.10	Valve Cylinder	1	1545	1204.19	Steel Poppet (Optional)	1
460	0205.11	Valve Cylinder Cam	2	1841	1403.06	Washer	1
776	0254.04	Bypass Elbow Hose Barb	1	1843	1403.07	Washer	4
1034	0604.09	discharge barb Nut	2	*1936	1501.23	Seat	1
1040	0604.26	Bypass Barb Nut	1	2251	1603.70	Plug	2
1071	0605.05	Gasket	2	2379	1801.17	Adjustment Knob	1
1124	0608.45	Ball valve	2	2477	1808.10	Bolt	2
1233	0901.24	Spring (HP)	1	2479	1804.74	Bolt	2
1238	0901.47	300 PSI Spring	1	2630	1810.01	Bolt, Stainless Steel (Optional)	1
1275	0902.25	Dump Valve Lever	1	*3000	8701.04	Urethane Poppet	1
*1304	0903.26	Diaphragm	1	7051	0202.69	Hose Barb	1
1349	GG-350	Gauge	1	7330	0604.29	Nut	1
1350	GG-1000	Gauge (HP)	1	8140	0903.42	Diaphragm, Viton (Optional)	1
1370	1101.06	O-Ring	2	9999	1603.99	3/4" B.S.P. Plug (Universal Control only)	1

***Parts included in Repair Kit (with Urethane Poppet) #8701.10**
 Also available with Steel Poppet - **Repair Kit #8701.02**

The control unit features a normal control valve, manual dump valve, pressure control knob, glycerine pressure gauge, and two ball valve discharge ports.

1. Before operating or reoperating the pump, push the manual dump valve lever (Ref. #1275) down, so the pump will start at zero pressure.
2. Turn pressure adjustment knob (Ref. #2379) Counterclockwise to relieve spring tension.
NOTE: Step 2 applies only to initial start-up, and is not necessary in daily operation of pump.
3. Start unit and let run until air is evacuated from system, when only liquid is expelled from the bypass line
4. Return dump valve lever to the UP position. Open spray gun or spray boom and turn the pressure adjustment knob (Ref. 2379) clockwise until desired operating pressure is achieved.

PROTECT PUMP FROM FREEZING

If freezing conditions exist, flush pump with a 50/50 mixture of antifreeze and water