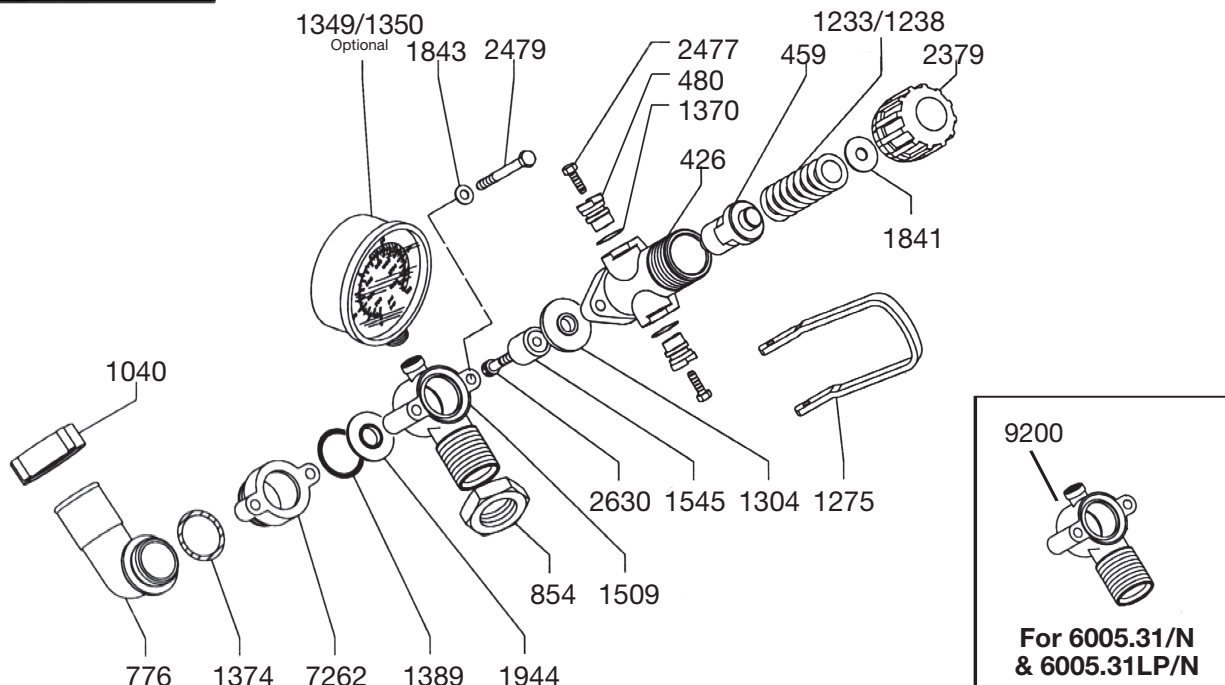




# 6005.31 & 6005.31/LP Control Unit

## Operating Instructions and Parts List



REF#	PART#	DESCRIPTION	QTY	REF#	PART#	DESCRIPTION	QTY
426	0204.40	Valve Body	1	*1389	1101.41	O-Ring	1
459	0205.10	Valve Cylinder	1	1509	1203.47	R.V. Body	1
460	0205.11	Valve Cylinder Cam	2	*1545	1204.19	Steel Poppet	1
776	0254.04	By-pass Hose Barb	1	1841	1403.06	Washer	1
854	0303.41	Nut	1	1843	1403.07	Washer	2
1040	0604.26	By-pass Barb Nut	1	*1944	1501.37	Seat	1
1233	0901.24	Spring	1	2379	1801.17	Adjustment Knob	1
1238	0901.47	Spring (6005.31/LP)	1	2477	1808.10	Bolt	2
1275	0902.25	Dump Valve Lever	1	2479	1804.74	Bolt	2
*1304	0903.26	Diaphragm	1	*2630	1810.01	Bolt - Stainless Steel	1
1349	GG-350	Gauge (6005.31/LP) - Optional	1	7262	0508.07	By-pass Flange	1
1350	GG-1000	Gauge - Optional	1	8140	0903.42	Diaphragm viton (optional)	1
*1370	1101.06	O-Ring	2	9200	1203.47/N	3/4" MNPT RV Elbow	1
1374	1101.12	O-Ring	1				

\* Parts Included in Repair Kit - #8701.25.

### OPERATING INSTRUCTIONS

1. Before operating or re-operating the pump, push the manual dump valve lever (Ref. #1275) down, so the pump will start at zero pressure. FAILURE TO DO SO WILL VOID PUMP WARRANTY.
2. Turn pressure adjustment knob (Ref. #2379) counterclockwise to relieve spring tension.  
NOTE: Step 2 applies only to initial start-up, and is not necessary in daily operation of pump.
3. Start unit and let run until air is evacuated from system, when only liquid is expelled from the bypass line.
4. Return dump valve lever to the UP position. Open spray gun or spray boom and turn the pressure adjustment knob (Ref. #2379) clockwise until desired operating pressure is achieved.

### PROTECT PUMP FROM FREEZING.

**If freezing conditions exist, flush pump with a 50/50 mixture of antifreeze and water.**