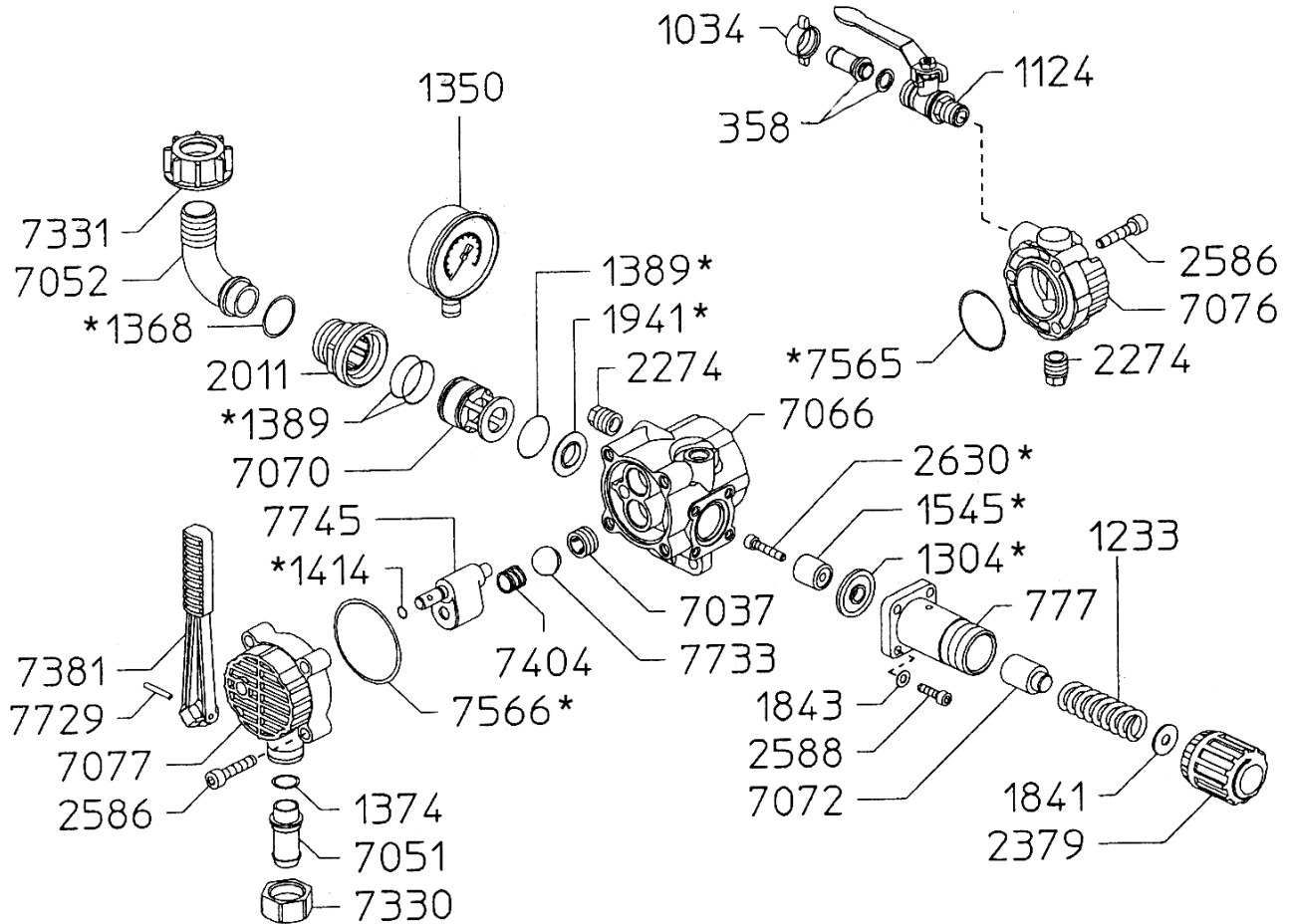




# 6004.05 Control Unit

## Exploded View Diagram and Parts List



REF#	PART#	DESCRIPTION	QTY	REF#	PART#	DESCRIPTION	QTY
358	0202.19	1/2" Hose Barb	2	2588	1805.19	Bolt	4
777	0252.05	Spring Body	1	*2630	1810.01	S. S. Bolt	1
1034	0604.09	Discharge Barb Nut	2	7037	0113.13	Ball Seat	2
1124	0608.45	Ball Valve	2	7051	0202.69	3/4" Brass Barb	1
1233	0901.24	Spring	1	7052	0202.75	Bypass Hose Barb	1
*1304	0903.26	R. V. Diaphragm	1	7066	0204.07	R. V. Body	1
1350	gg-1000	Gauge	1	7070	0205.14	Cylinder	1
*1368	1101.04	O-Ring	1	7072	0205.16	Spring Guide	1
1374	1101.12	O-Ring	1	7076	0208.38	Discharge Plate	1
*1389	1101.41	O-Ring	3	7077	0208.39	Selector Body	1
*1414	1106.09	O-Ring	1	7330	0604.29	Barb Nut	1
*1545	1204.19	R. V. Poppet	1	7331	0604.36	Nut	1
1841	1403.06	Washer	1	7381	0803.13	Lever	1
1843	1403.07	Washer	4	7404	0901.44	Spring	1
*1941	1501.29	Seat	1	*7565	1101.66	O-Ring	1
2011	1504.02	Bypass Seat	1	*7566	1101.67	O-Ring	1
2274	1603.44	Plug	2	7729	1507.13	Roll Pin	1
2379	1801.17	Adjustment Knob	1	7733	1518.05	Control Unit Ball	1
2586	1805.13	Bolt	7	7745	1531.03	Control Selector	1

\* Parts Included in Repair Kit - #6062.56.



# 6004.05 Control Unit

## Operating Instructions & Specifications

The 6004.05 is a remote mounted control valve that provides 2-section spray control and a master on/off valve.

This control unit is intended for use with KAPPA-30/40/55/75/100 or similar pumps.



### SPECIFICATIONS

Maximum Flow .....	32 GPM
Maximum Pressure .....	600 PSI
Hose Barb Ports	
Inlet .....	3/4" Hose Barb
Discharge .....	(2) 1/2" Hose Barbs, Ball Valve Controlled
Bypass .....	1" Hose Barb
Dimensions .....	L-7" x W-10" x H-9"
Weight .....	6 lbs.

### OPERATING INSTRUCTIONS

The 6004.05 control unit has a manual dump valve lever, pressure control knob, glycerin-filled pressure gauge and two on-off discharge ports.

1. Before operating or re-operating pump, move the selection lever (Ref. #7381) to the up (or OFF) position, so the pump will start at zero pressure. Failure to do so will void pump warranty.
2. Turn pressure adjustment knob (Ref. #2379) counter-clockwise to relieve spring tension.  
NOTE - Step 2 only applies to initial start-up and is not necessary in daily operation.
3. Start unit and let run until air is evacuated from system, when only liquid is expelled from the by-pass line.
4. Move selector lever (Ref. #7381) to the on position, move outlet handles (Ref. #1124) to the open position and turn the pressure adjustment knob (Ref. #2379) clockwise until desired operating pressure is achieved.

NOTE - Protect pumps from freezing. If freezing conditions exist, flush pump and system with a 50/50 mixture of antifreeze and water.