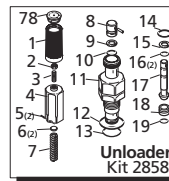
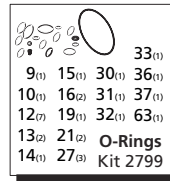
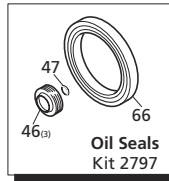
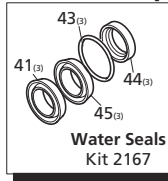
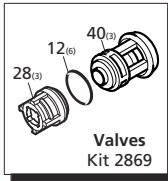


Repair Kits



Pos	Code	Description	Qty.	Pos	Code	Description	Qty.	Legend		
1	1981780	Knob	1	38	1270141	Injector adapter	1	For ●	For ■	For ▲
2	1980300	Nut	1	40	1989050	Inlet valve	3	SJW2G25	SJW2.5G25	SJW3G25
3	1980470	Adjusting screw	1	41	1342761	Gasket	3			
4	1980390	Handle insert	1	42	1981570	Piston guide	3			
5	1080070	Pin	2	43	770260	O-Ring $\phi 23.52 \times 1.78$	3			
6	1980220	Plate spring	2	44	1260440	Gasket	3			
7	1271070	Spring	1	45	1981580	Ring	3			
8	1080041	Upper piston	1	46	1980410	Oil seal	3			
9	1080401	Back-up ring	1	47	770090	O-Ring $\phi 5.28 \times 1.78$	1			
10	1080250	O-Ring $\phi 7.66 \times 1.78$	1	48	1980460	Pump housing	1			
11	1980210	Piston guide	1	52	1980290	Plug 3/8"	1			
12	880830	O-Ring $\phi 15.54 \times 2.62$	7	53	180030	Bolt M8x20	(228 in/lbs) 4			
13	740290	O-Ring $\phi 14 \times 1.78$	2	54	1981140	Spring	3			
14	800560	O-Ring $\phi 8.73 \times 1.78$	1	55	1981120	Piston	3			
15	1271170	Back-up ring	1	56	1980150	Spring retainer	3			
16	1080190	O-Ring $\phi 2.9 \times 1.78$	2	57	1983100	Rail	1			
17	1271160	Lower piston	1	58	1980250	Bearing	2			
18	1980200	Valve seat	1	59	1980240	Thrust washer	3			
19	1470210	O-Ring $\phi 9 \times 1$	1	60	850370	Bolt M8x16	1			
20	880581	Plug 1/4" G	2	61	1980080	Wobble plate	● 1			
21	820510	O-Ring $\phi 10.82 \times 1.78$	2	61	1980070	Wobble plate	■ 1			
22	620301	Plug 1/8" G	1	61	1980060	Wobble plate	▲ 1			
23	1980310	Head bolt M10x65	(443 in/lbs) 3	62	1980440	Hollow shaft	1			
24	650530	Lockwasher	3	63	1980340	O-Ring $\phi 83.8 \times 2.62$	1			
25	1982450	Pump head brass	1	64	1982200	Flange	1			
26	1260162	Valve cap	(443 in/lbs) 3	65	1980230	Roller bearing	1			
27	960160	O-Ring $\phi 17.86 \times 2.62$	3	66	480671	Seal	1			
28	1269050	Valve assembly	3	67	1980430	Spacer	3			
29	1982520	Hose tail	1	71	1981130	Plunger shoe	1			
30	480480	O-Ring $\phi 4.48 \times 1.78$	1	78	1981770	Knob plug	1			
31	1250280	Ball	1							
32	1560520	Spring	1							
33	1460430	O-Ring $\phi 4 \times 2.5$	1							
34	1540170	Check valve	1							
35	1080091	Spring	1							
36	394280	O-Ring $\phi 12.42 \times 1.78$	1							
37	1200690	O-Ring $\phi 15.6 \times 1.78$	1							
					AR64545	Oil	1			
						OIL CAPACITY - 4.5 OZ				