



WMH Series

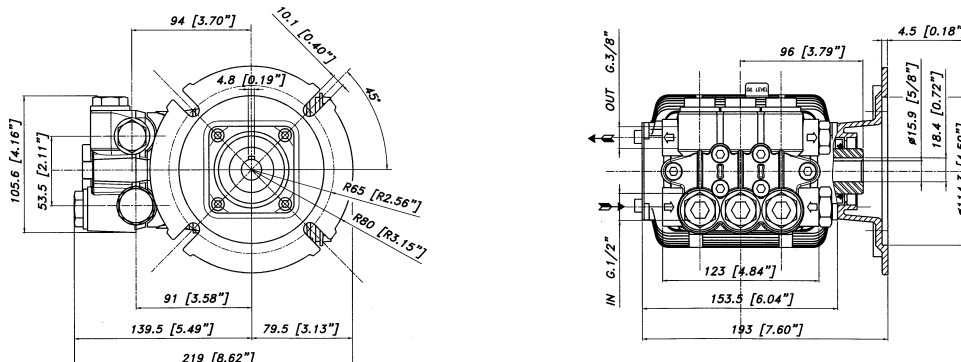
FEATURES

- The most requested size pump in the pressure cleaning industry.
- Five year limited warranty.
- Forged brass manifold with an exclusive lifetime warranty.
- Large capacity, die-cast, anodized aluminum oil-bath crankcase.
- Over-sized connecting rods for maximum life.
- Heavy-duty ball bearings.
- Solid ceramic plungers with mirror finish and corrosion resistance.
- Stainless steel inlet and discharge valve assemblies.
- Forged valve caps with recessed O-rings.
- Zinc coated manifold bolts for extra corrosion resistance.

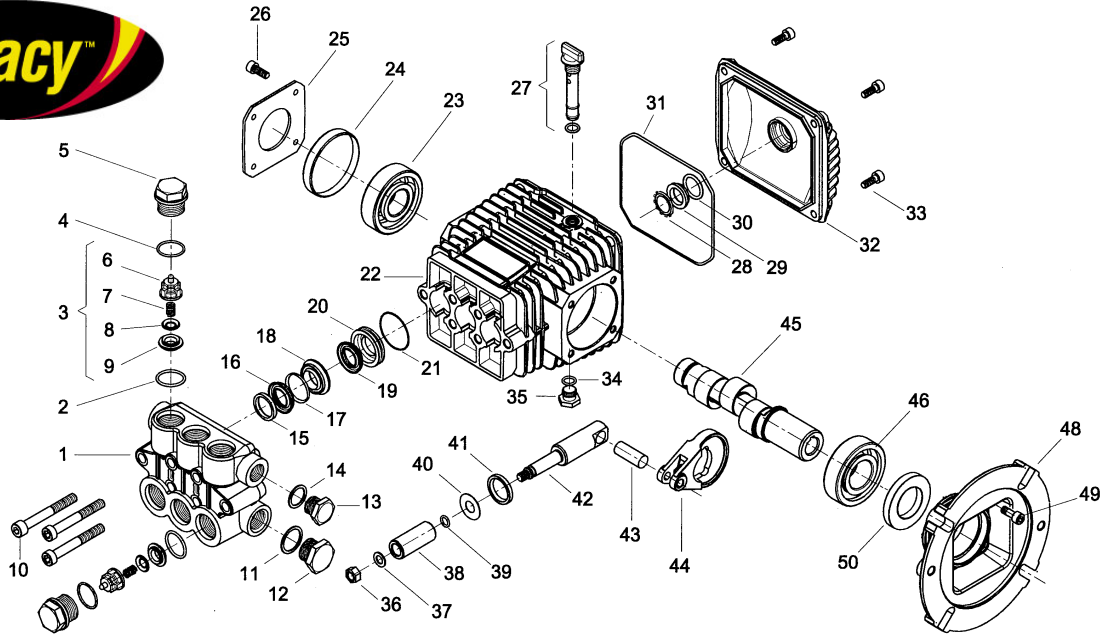
SPECIFICATIONS

PUMP MODEL	WMH 2021	WMH 2035
Maximum Volume (GPM)	2.1	3.5
Max. Discharge Pressure (PSI)	2000	
Maximum Pump Speed	1725	
Maximum Inlet Pressure	125 PSI	
Maximum Inlet Vacuum		
Bore	18 mm	
Stroke		
Crankcase Oil Capacity	11.2 Oz.	
Maximum Fluid Temperature	165° F	
Inlet Port Thread	1/2" - 14 BSSP-F	
Discharge Port Thread	3/8" - 19 BSSP-F	
Shaft Diameter	24 mm	
Weight	16.3 Lbs.	
Dimensions	8.6" x 6.3" x 5.0"	

DIMENSIONAL DRAWING



Legacy Model WMH-2021 (5/8") WMH-2035 (3/4")



POS NO.	PART NO.	DESCRIPTION	KIT	NO. PCS.
1	15-040119282	Pump Head (D.15)		1
2	15-803182002	O-Ring Dia. 2.62x17.13		6
3	15-049824973	Check Valve		6
4	15-803182002	O-Ring Dia. 2.62 x 17.13		6
5	15-070040532	Ex. Deep Sealing Valve Cap M27x1.5		1
6	15-040114322	Valve Guide	63	6
7	15-380054512	Spring	63	6
8	15-040022682	Valve	63	6
9	15-040023512	Valves Assembly Seat	63	6
10	15-862945002	Screw M8x60 UNI 5931		6
11	15-824140002	Gasket for Coupling 21.2x26x1		1
12	15-852629002	Plug G 1/2"		1
13	15-852579002	Plug G 3/8		1
14	15-824109002	Copper Gasket Dia. 17x22x1		1
15	15-050019322	Seal Packer DN 18/28	70, 12	3
16	15-802061002	V Packing Dia. 18x28x5.5	70, 12	3
17	15-050221322	External Check Ring (EX050088322)	70, 12	3
18	15-050223532	Front Brass Gland Dia. 18MM	70	3
19	15-802044002	U Pressure Seal Dia. 18x24x4	70, 12	3
20	15-040165532	Rear Gland	70	3
21	15-803073002	O-Ring Dia. 23.52x1.78	70, 12	3
22	15-040110092	Crankcase		1
23	15-812725002	Bearing Riv 6B 25		1
24	15-802101002	Cap RCA 6210	8	1
25	15-050045612	Crankcase Cover		1
26	15-862108002	Screw M6x16 UNI 5931		4
27	15-049832973	Filler Plug		1

POS NO.	PART NO.	DESCRIPTION	KIT	NO. PCS.
28	15-801184002	Ring		1
29	15-040120322	Oil Sight Glass		1
30	15-803210682	O-Ring Dia. 2.62x120.32		1
31	15-803210682	O-Ring D.2.62x120.32		1
32	15-040117092	Rear Cover		1
33	15-862168002	Galvanized Screw M6x22 UNI 5931		4
34	15-803057002	O-Ring 2037 - 39.34x2.62		1
35	15-852543502	Cap G. 1/4 x 9 (EX 852542002)		1
36	15-814561002	Stainless Steel Nut M8 UNI 5589		3
37	15-843642902	Washer Dia. 8.1x14x1		3
38	15-050010182	Ceramic Piston Dia. 18mm		3
39	15-803049002	O-Ring Dia. 1.78x5.28		3
40	15-843726002	Washer Dia. 9.1x24x1		3
41	15-802035002	Oil Seal Dia. 15x24x5	64	3
42	15-040107512	Plunger Rod		3
43	15-852003002	Piston Pin Dia. 8x25		3
44	15-040115092	Conrod		3
45/1	15-040128202	5/8" Hollow Crankshaft E=3		1
45/2	15-040323262	3/4" Hollow Crankshaft		1
46	15-812750002	Ball Bearing 30x62x16		1
48	15-040330092	Motor Flange Nema 56/C		1
49	15-862168002	Galvanized Screw M6x22 UNI 5931		4
50	15-802125502	Shaft Oil Seal		1

	KIT 63 CHECK VALVE/O-RING	KIT 64 PLUNGER OIL SEAL	KIT 70 PACKING/ BRASS ASSY	KIT 12 PACKING ONLY
KIT BREAKDOWN				
PART #	15-049835973	15-049836973	15-049841973	15-049813973
TOTAL PCS.	12	3	21	15