



TT Series

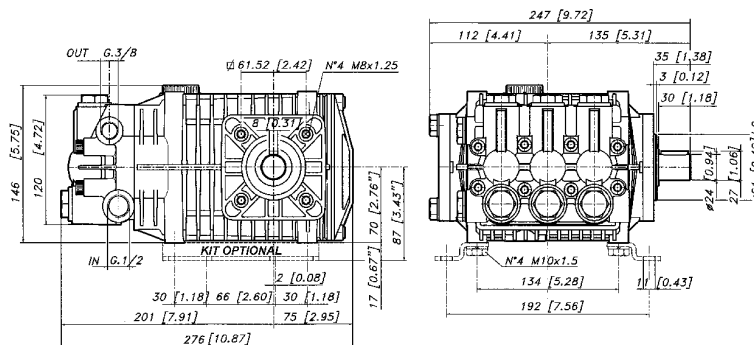
FEATURES

- The most requested size pump in the pressure cleaning industry.
- Five year limited warranty.
- Forged brass manifold with an exclusive lifetime warranty.
- Large capacity, die-cast, anodized aluminum oil-bath crankcase.
- Over-sized connecting rods for maximum life.
- Heavy-duty ball bearing.
- Solid ceramic plungers with mirror finish and corrosion resistance.
- Stainless steel inlet and discharge valve assemblies.
- Forged valve caps with recessed O-rings.
- Zinc coated manifold bolts for extra corrosion resistance.

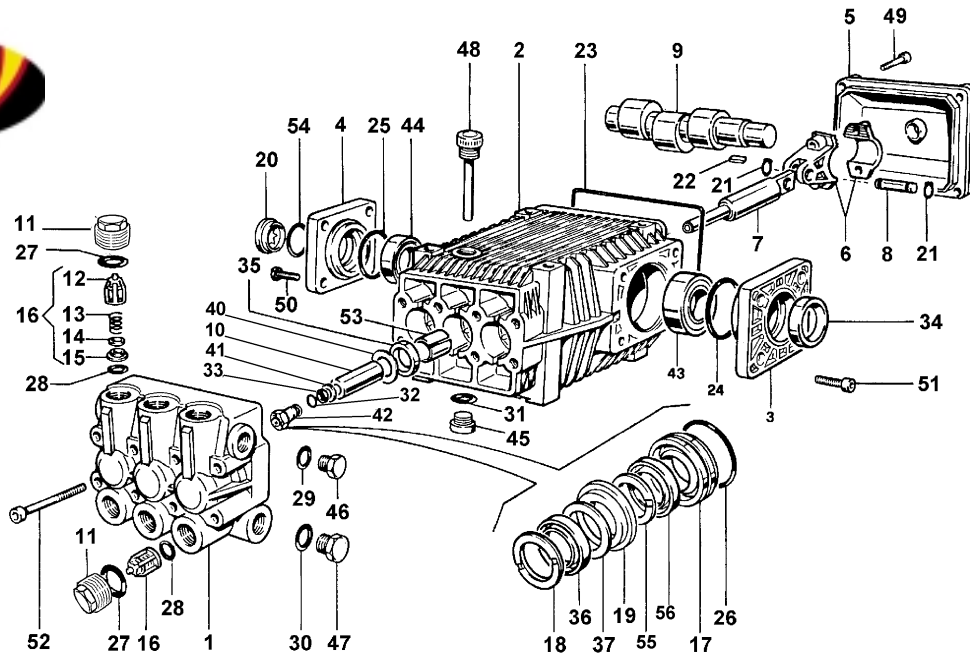
SPECIFICATIONS

PUMP MODEL	3540	3555
Maximum Volume (GPM)	4	5.5
Max. Discharge Pressure (PSI)	3500	3500
Maximum Pump Speed (RPM)	1450	1450
Maximum Inlet Pressure (PSI)	125	125
Maximum Inlet Vacuum	7.9 Hg	
Bore	20 mm	
Stroke	14 mm	15 mm
Crankcase Oil Capacity	34 oz.	
Maximum Fluid Temperature	165° F	
Inlet Port Thread	1/2" - 14 BSPP-F	
Discharge Port Thread	3/8" - 19 BSPP-F	
Shaft Diameter	24 mm	
Weight	31.9 lbs	
Dimensions	10.9" x 9.7" x 5.8"	

DIMENSIONAL DRAWING



Legacy Model TT 3540-3555



POS NO.	PART NO.	DESCRIPTION	KIT	NO. PCS.
1	15-060083282	Pump Head, Plated		1
2	15-060090092	Pump Crankcase		1
3	15-060093092	Bearing Cover D.72		1
4	15-060092092	Bearing Cover D.80		1
5	15-060003092	Crankcase Cover		1
6	15-069800972	Connecting Rod		3
7	15-060071512	Plunger Rod		3
8	15-060007492	Piston Pin Dia. 15 MM		3
9/1	15-060107262	Crankshaft E=5.87		1
9/2	15-060109262	Crankshaft E=8		1
10	15-060009182	Ceramic Piston Dia. 20MM		8
11	15-070040532	Ex. Deep Sealing Valve Cap M27x1.5		1
12	15-060105322	Valve Cage	123	3
13	15-940054512	Valve Spring	123	6
14	15-060104512	Poppet	123	6
15	15-060110512	Valve Seat	123	6
16	15-069846973	Check Valves	123	6
17	15-060036532	Back Gland Dia. 20MM	86	6
18	15-802065302	Thrust Ring Dia. 20	86, 89	6
19	15-060076532	Intermediate Ring	86	3
20	15-060059322	Self Locking Oil Sight Glass		3
21	15-801099002	Circlip Dia. 15		3
22	15-806534002	Tab 8 x 7 x 35		1
23	15-803210902	O-Ring Dia. 2.62 x 152		6
24	15-803080702	O-Ring D.1.78 x 69.57		1
25	15-803081702	O-Ring		1
26	15-803080102	O-Ring Dia 1.78 x 34.65	86, 89	3
27	15-803182002	O-Ring Dia. 2.62 x 17.13		6

POS NO.	PART NO.	DESCRIPTION	KIT	NO. PCS.
28	15-803182002	O-Ring Dia. 2.62 x 17.13	123	6
29	15-824109002	Copper Gasket Dia. 17 x 22 x 1		1
30	15-824180002	Gasket Dia. 27 x 36 x 1		1
31	15-803204002	O-Ring Dia. 2.62 x 23.81		1
32	15-803058002	O-Ring Dia. 1.78 x 10.82		3
33	15-803902002	BKC Long Life Ring		3
34	15-802143002	Oil Seal		1
35	15-802090002	Oil Seal Dia. 17	37	3
36	15-802065102	Super "U" Packing Dia.20 x 30DD	86, 89	3
37	15-060086322	Anti-Extrusion Ring	86, 89	3
40	15-060018682	Washer Dia. 14 x 38 x 0.5		3
41	15-843646002	Washer		3
42	15-060072002	Piston Bolt		3
43	15-812848002	Str. Roller Bearing Dia. 35x72x17 CO		1
44	15-812867002	Bearing		1
45	15-852687002	Galvanized Cap TCCE 3/4 DIN 908		1
46	15-852579002	Plug G 3/8		1
47	15-852693002	Cap G3/4x20		1
48	15-060020322	Filler Plug with Dip Stick		1
49	15-862108002	Screw M6x16 UNI 5931		4
50	15-863265002	Screw M10x25		4
51	15-862562002	Screw M 8x20		4
52	15-862985002	Screw TCEI M8 x 70 UNI 5931		8
53	15-804300002	Self-Lubricating Bushing		3
54	15-803265002	O-Ring Dia.3.53 x 46.01		1
55	15-380392322	Thrust Ring Dia. 20 x 30	86, 89	3
56	15-802064002	High Pressure Seal Dia. 20 x 30	86, 89	3

	KIT 123 CHECK VALVE/O-RING	KIT 37 PLUNGER OIL SEAL	KIT 86 PACKING/ BRASS ASSY	KIT 89 PACKING ONLY
KIT BREAKDOWN				
PART #	15-069867973	15-069814973	15-069836973	15-069839973
TOTAL PCS.	12	3	24	18