



TML Series

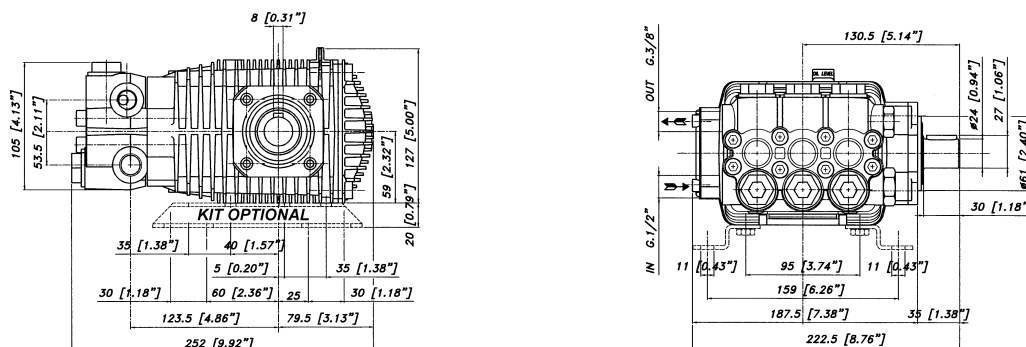
FEATURES

- The most requested size pump in the pressure cleaning industry.
- Five year limited warranty.
- Forged brass manifold with an exclusive lifetime warranty.
- Large capacity, die-cast, anodized aluminum oil-bath crankcase.
- Over-sized connecting rods for maximum life.
- Solid ceramic plungers with mirror finish and corrosion resistance.
- Stainless steel inlet and discharge valve assemblies.
- Forged valve caps with recessed O-rings.
- Zinc coated manifold bolts for extra corrosion resistance.

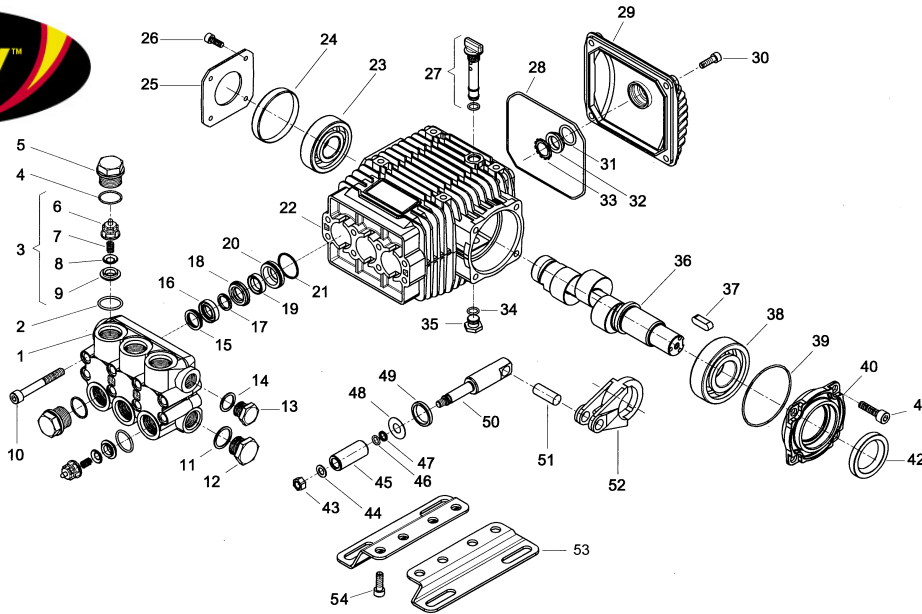
SPECIFICATIONS

PUMP MODEL	TML 4053F
Maximum Volume (GPM)	5.3
Max. Discharge Pressure (PSI)	4000
Maximum Pump Speed	2800
Maximum Inlet Pressure	125 PSI
Maximum Inlet Vacuum	Flooded
Bore	15 mm
Stroke	
Crankcase Oil Capacity	15.5 Oz.
Maximum Fluid Temperature	165° F
Inlet Port Thread	1/2" - 14 BSSP-F
Discharge Port Thread	3/8" - 19 BSPP-F
Shaft Diameter	24 mm
Weight	20 Lbs.
Dimensions	9.9" x 8.8" x 5.0"

DIMENSIONAL DRAWING



Legacy Model TML 4053F



POS NO.	PART NO.	DESCRIPTION	KIT	NO. PCS.
1	15-070070282	Pump Head		1
2	15-803182002	O-Ring Dia. 2.62x17.13	123	6
3	15-079819973	Check Valves	123	1
4	15-803182002	O-Ring Dia. 2.62x17.13	123	6
5	15-070040532	Ex. Deep Sealing Valve Cap M27x1.5		1
6	15-060105322	Valve Cage	123	1
7	15-070048512	Valve Spring	123	1
8	15-060104512	Poppet	123	1
9	15-040023512	Valves Assembly Seat	123	6
10	15-862985002	Screw TCEI M8x70 UNI 5931		8
11	15-824140002	Gasket for Coupling 21.2x26x1		1
12	15-852629002	Plug G 1/2"		1
13	15-852579002	Plug G 3/8		1
14	15-824109002	Copper Gasket Dia. 17x22x1		1
15	15-040270322	Seal Packer	69, 74	3
16	15-802020002	Packing D.15	69, 74	3
17	15-040269322	Anti-Extrusion Ring	69, 74	3
18	15-040268532	Front Gland	69	3
19	15-802034002	U Pressure Seal Dia. 15x22x5.5	69, 74	3
20	15-070016532	Rear Gland	69	3
21	15-803080002	O-Ring	69, 74	3
22	15-070001092	Crankcase		1
23	15-812725002	Bearing Riv 6B 25		1
24	15-802102002	Cover 62x07 RCA		1
25	15-050045612	Crankcase Cover		1
26	15-862108002	Screw M6x16 UNI 5931		4
27	15-049832973	Filler Plug		1
28	15-803210682	O-Ring D.2.62x120.32		1
29	15-040117092	Rear Cover		1

POS NO.	PART NO.	DESCRIPTION	KIT	NO. PCS.
30	15-862168002	Galvanized Screw M6x22 UNI 5931		4
31	15-803189002	O-Ring Dia. 2.62x18.72		1
32	15-040120322	Oil Sight Glass		1
33	15-801184002	Ring		1
34	15-803057002	O-Ring 2037 - 39.34x2.62		1
35	15-852543502	Cap G 1/4x9 (EX 852542002)		1
36	15-070036262	Crankshaft D.24 E=5.4		1
37	15-806534002	Tab 8x7x35		1
38	15-812776002	Bearing		1
39	15-803080702	O-Ring D.1.78x69.57		1
40	15-070003092	Support		1
41	15-862547002	Screw M8x18		4
42	15-802119002	Oil Seal 30x52x7		1
43	15-814561002	Stainless Steel Nut M8 UNI 5589		4
44	15-843642902	Washer Dia. 8.1x14x1		1
45	15-070007182	Ceramic Piston DN 15		3
46	15-803049002	O-Ring Dia. 1.78x5.28		3
47	15-803908502	Seal		3
48	15-843726002	Washer Dia. 9.1x24x1		3
49	15-802063502	Axial Ring	65	3
50	15-070009512	Plunger Rod		3
51	15-852006282	Piston Pin		3
52	15-070005112	Bronze Conrod		3
53	15-040247612	Mounting Rail (Optional)		3
54	15-862495002	Screw M8x16 (Optional)		3
55	15-079802973	Mounting Rail Kit (Optional)		2

	KIT 123 CHECK VALVE/O-RING	KIT 65 PLUNGER OIL SEAL	KIT 69 PACKING/ BRASS ASSY	KIT 74 PACKING ONLY
KIT BREAKDOWN				
PART #	15-06986793	15-049837973	15-079804973	15-079806973
TOTAL PCS.	12	3	21	15