



KTV Series

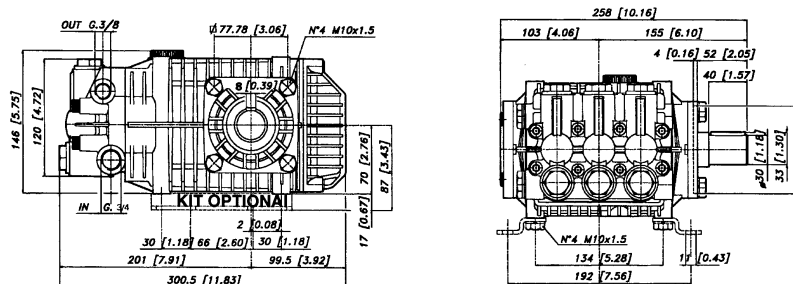
FEATURES

- Industrial size pump that is most asked for in the pressure cleaning industry.
- Five year limited warranty.
- Forged brass manifold with an exclusive lifetime warranty.
- Large capacity, die-cast, anodized aluminum oil-bath crankcase.
- Over-sized connecting rods for maximum life.
- Heavy duty ball bearing.
- Solid ceramic plungers with mirror finish and corrosion resistance.
- Stainless steel inlet and discharge valve assemblies.
- Forged valve caps with recessed O-rings.
- Zinc coated manifold bolts for extra corrosion resistance.

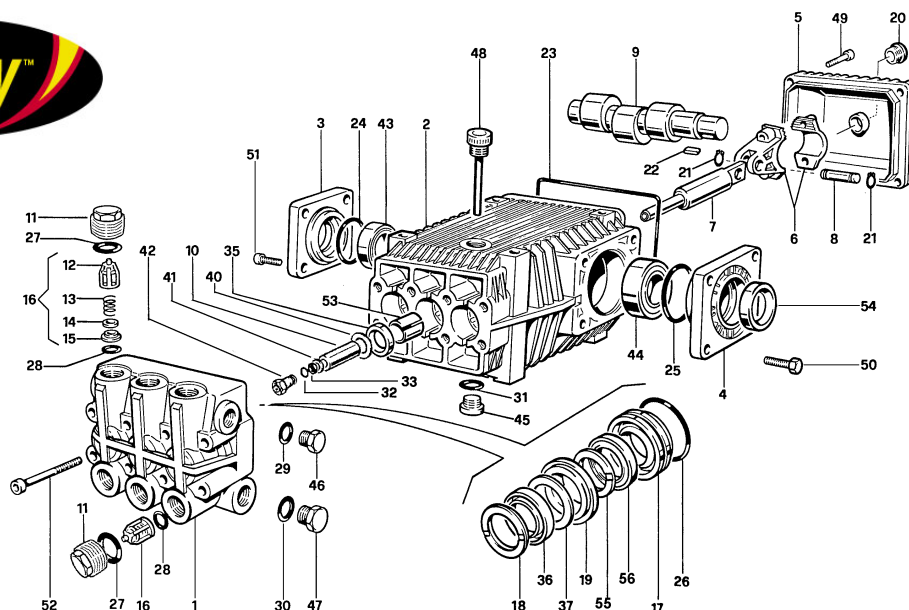
SPECIFICATIONS

PUMP MODEL	KTV 4040
Maximum Volume (GPM)	4
Max. Discharge Pressure (PSI)	4000
Maximum Pump Speed	1450 RPM
Maximum Inlet Pressure	125 PSI
Maximum Inlet Vacuum	7.9 HG
Bore	20 MM
Stroke	
Crankcase Oil Capacity	34 Oz.
Maximum Fluid Temperature	165° F
Inlet Port Thread	1/2 -14 BSPP-F
Discharge Port Thread	3/8 - 19 BSPP-F
Shaft Diameter	30 MM
Weight	34 Lbs.
Dimensions	10.9" x 9.7" x 5.8"

DIMENSIONAL DRAWING



Legacy Model KTV 4040



POS NO.	PART NO.	DESCRIPTION	KIT	NO. PCS.
1	15-060083282	Pump Head Plated		1
2	15-060090092	Pump Crankcase		1
3	15-060099092	Bearing Cover		1
4	15-060092092	Bearing Cover		1
5	15-060006092	Crankcase Cover		1
6	15-069800972	Connecting Rod		3
7	15-060058512	Plunger Rod		3
8	15-060007492	Piston Pin Dia. 15 MM		3
9/1	15-060032262	Crankshaft E=5.87 Dia. 30 MM		1
10	15-060009182	Ceramic Piston Dia. 20MM		8
11	15-070043532	Nickel Plated Valve Cap		1
12	15-060105322	Valve Cage	123	1
13	15-940054512	Valve Spring	123	3
14	15-060104512	Poppet	123	6
15	15-060110512	Valve Seat	123	6
16	15-069846973	Check Valves	123	6
17	15-060036532	Back Gland Dia. 20MM	86	6
18	15-802065302	Thrust Ring Dia. 20	86, 90	6
19	15-060076532	Intermediate Ring	87	6
20	15-853515502	Oil Plug G 3/4 with O-Ring		1
21	15-801099002	Circlip Dia. 15		3
22	15-806534002	Tab 8x7x35		3
23	15-803210902	O-Ring Dia. 2.62 x 152		1
24	15-803080702	O-Ring Dia. 2.62 x 67.95		1
25	15-803210642	O-Ring Dia. 2.62 x 75.87		1
26	15-803080102	O-Ring Dia 1.78 x 37.82	86, 89	3
27	15-803182002	O-Ring Dia. 2.62 x 17.13		6

POS NO.	PART NO.	DESCRIPTION	KIT	NO. PCS.
28	15-803182002	O-Ring Dia. 2.62 x 17.13	123	6
29	15-824180002	Gasket Dia. 27 x 36 x 1		1
30	15-824140002	Gasket for Coupling 21.2 x 26 x 1		1
31	15-803204002	O-Ring Dia. 2.62x23.81		1
32	15-803058002	O-Ring Dia. 1.78 x 10.82		3
33	15-803902002	BKC Long Life Ring		3
35	15-802090002	Oil Seal Dia. 17	37	3
36	15-802065102	Super "U" Packing Dia.20 x 30DD	86, 89	3
37	15-060086322	Anti-Extrusion Ring	86, 89	3
40	15-060018682	Washer Dia. 14x38x0.5		3
41	15-843646002	Washer		3
42	15-060072002	Piston Bolt		3
43	15-812848002	Str. Roller Bearing Dia. 35x72x17 CO		1
44	15-812870002	Str. Roller Bearing Dia. 35x80x21 CO		1
45	15-852687002	Galvanized Cap TCCE 3/4 DIN 908		1
46	15-852628002	Cap 1/2 G		1
47	15-85229002	Plug G 1/2"		1
48	15-060020322	Filler Plug with Dip Stick		1
49	15-862216002	Screw M6x25		4
50	15-863265002	Screw M10x25		4
51	15-862562002	Screw M 8x20		4
52	15-862951002	Screw		8
53	15-804300002	Self-Lubricating Bushing		3
54	15-802143002	Oil Seal		1
55	15-380392322	Thrust Ring Dia. 20 x 30	86, 89	3
56	15-802064002	High Pressure Seal Dia. 20 x 30	86, 89	3

	KIT 123 CHECK VALVE/O-RING	KIT 37 PLUNGER OIL SEAL	KIT 86 PACKING/ BRASS ASSY	KIT 89 PACKING ONLY
KIT BREAKDOWN				
PART #	15-069867973	15-069814973	15-069836973	15-069839973
TOTAL PCS.	12	3	24	18