



# KKV Series

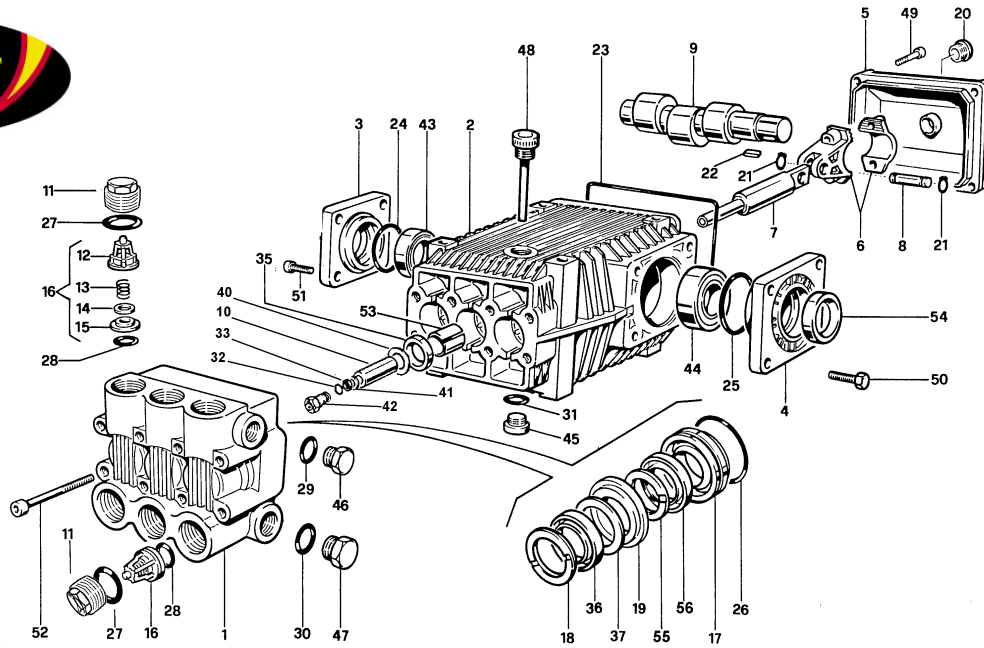
## FEATURES

- The most requested size pump in the pressure cleaning industry.
- Five year limited warranty.
- Forged brass manifold with an exclusive lifetime warranty.
- Large capacity, die-cast, anodized aluminum oil-bath crankcase.
- Over-sized connecting rods for maximum life.
- Heavy-duty ball bearing.
- Solid ceramic plungers with mirror finish and corrosion resistance.
- Stainless steel inlet and discharge valve assemblies.
- Forged valve caps with recessed O-rings.
- Zinc coated manifold bolts for extra corrosion resistance.

## SPECIFICATIONS

<b>PUMP MODEL</b>	<b>3087</b>
Maximum Volume (GPM)	8.5
Max. Discharge Pressure (PSI)	3000
Maximum Pump Speed	1750 RPM
Maximum Inlet Pressure	125 PSI
Maximum Inlet Vacuum	7.9 HG
Bore	22 mm
Stroke	18 mm
Crankcase Oil Capacity	34 oz
Maximum Fluid Temperature	165° F
Inlet Port Thread	3/4" 14 BSSP-F
Discharge Port Thread	1/2" 14 BSSP-F
Shaft Diameter	30 mm
Weight	39.5 lbs
Dimensions	12.5" x 10.2" x 6.1"

# Legacy Model KKV 3087



POS NO.	PART NO.	DESCRIPTION	KIT	NO. PCS.
1	15-060089282	Pump Head, Nickel Plated D.22		1
2	15-060091092	Pump Crankcase		1
3	15-060099092	Bearing Cover		1
4	15-060092092	Bearing Cover D.80		1
5	15-060006092	Crankcase Cover		1
6	15-069800972	ConnectingRod		3
7	15-060071512	Plunger Rod		3
8	15-060007492	Piston Pin, w/Ring, Dia. 15mm		3
9/3	15-060035262	Crankshaft, E=9, 30mm		1
10	15-060010182	Ceramic Piston Dia. 22mm		3
11	15-060097532	Valve Cap Plated		6
12	15-060013322	Valve Cage	40	6
13	15-970066512	Valve Spring	40	6
14	15-060014612	Valve	40	6
15	15-060025512	Valve Seat	40	1
16	15-069801973	Valves Assembly	40	6
17	15-060037532	Gland, Back Dia. 22mm	87	3
18	15-802088802	Thrust Ring Dia. 22	87, 90	3
19	15-060077532	Intermediate Ring	87	3
20	15-853515502	Oil Sight Glass		1
21	15-801099002	Circlip Dia. 15		6
22	15-806534002	Key, Rounded (8 x 7 x 35)		1
23	15-803210902	O-Ring		1
24	15-803080702	O-Ring		1
25	15-803081702	O-Ring		1
26	15-803080202	O-Ring, Dia 1.78 x 37.82	87, 90	3
27	15-803204002	O-Ring 2.62 x 23.81		6
28	15-803204002	O-Ring Dia. 22.62 x 23.81	40	

POS NO.	PART NO.	DESCRIPTION	KIT	NO. PCS.
29	15-824140002	Gasket for Coupling		1
30	15-824220002	Gasket, 34.5 x 42 x 1		1
31	15-803204002	O-Ring		1
32	15-803058002	O-Ring		3
33	15-803902002	Backring, Long life		3
35	15-802090002	Seal, Oil (17mm)		3
36	15-802088602	Packing, "Super U" (25 x 35)	87, 90	6
37	15-060087322	Anti-Extrusion Ring	87, 90	3
40	15-060018682	Washer, Dia. 14 x 38.5		3
41	15-843646002	Washer		3
42	15-060072002	Piston Bolt		3
43	15-812848002	Bearing, Roller (35 x 72 x 17) CO		1
44	15-812870002	Bearing, Roller (35 x 80 x 21) CO		1
45	15-852687002	Galvanized Cap TCCE 3/4 Din 908		1
46	15-852629502	Plug, 1/2" G		1
47	15-852711002	Plug, 1"		1
48	15-060020322	Filler Plug w/Dipstick		1
49	15-862216002	Screw, M6x25		4
50	15-863265002	Screw, M10x2		4
51	15-862562002	Screw, M8x20		4
52	15-863590002	Galvanized Bolt M10x80 CO		8
53	15-804300002	Self Lubricating Bushing		3
54	15-802143002	Oil Seal		1
55	15-060015322	Thrust Ring Dia. 22mm	87, 90	3
56	15-802087002	High Pressure Seal Dia. 22 x 32	87, 90	3

	KIT 40 CHECK VALVE/O-RING	KIT 37 PLUNGER OIL SEAL	KIT 87 PACKING/ BRASS ASSY	KIT 90 PACKING ONLY
<b>KIT BREAKDOWN</b>				
<b>PART #</b>	<b>15-069817973</b>	<b>15-069814973</b>	<b>15-069837973</b>	<b>15-069840973</b>
<b>TOTAL PCS.</b>	12	3	24	18