



# KKV Series

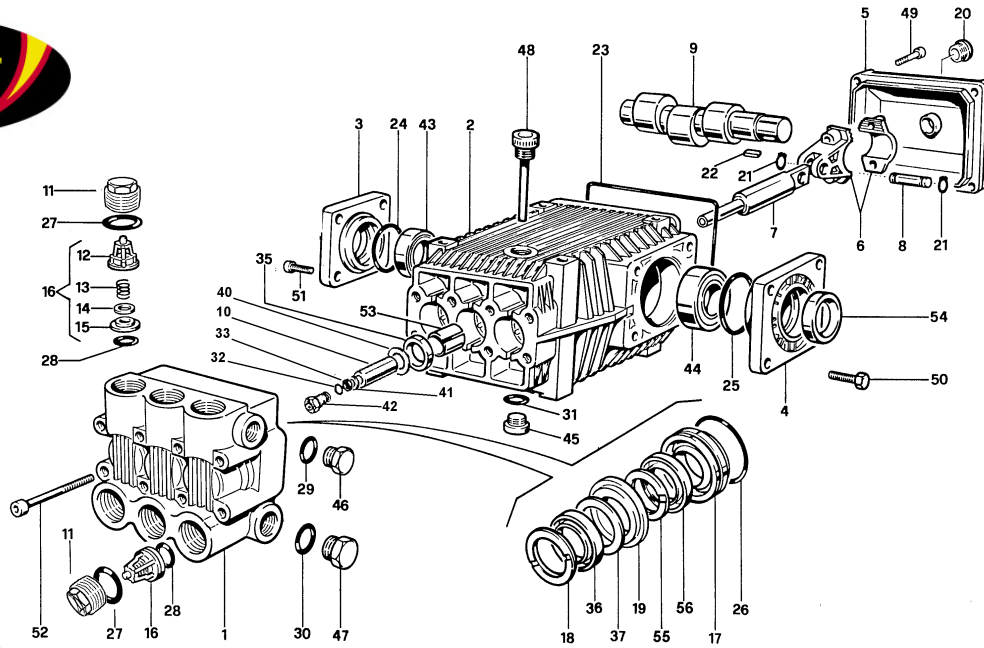
## FEATURES

- The most requested size pump in the pressure cleaning industry.
- Five year limited warranty.
- Forged brass manifold with an exclusive lifetime warranty.
- Large capacity, die-cast, anodized aluminum oil-bath crankcase.
- Over-sized connecting rods for maximum life.
- Heavy-duty ball bearing.
- Solid ceramic plungers with mirror finish and corrosion resistance.
- Stainless steel inlet and discharge valve assemblies.
- Forged valve caps with recessed O-rings.
- Zinc coated manifold bolts for extra corrosion resistance.

## SPECIFICATIONS

PUMP MODEL	2311
Maximum Volume (GPM)	11
Max. Discharge Pressure (PSI)	2500
Maximum Pump Speed	1750 RPM
Maximum Inlet Pressure	125 PSI
Maximum Inlet Vacuum	7.9 HG
Bore	25 mm
Stroke	18 mm
Crankcase Oil Capacity	34 oz
Maximum Fluid Temperature	165° F
Inlet Port Thread	3/4" 14 BSSP-F
Discharge Port Thread	1/2" 14 BSSP-F
Shaft Diameter	30 mm
Weight	39.5 lbs
Dimensions	12.5 x 10.2 x 6.1

# Legacy Model KKV 2311



POS NO.	PART NO.	DESCRIPTION	KIT	NO. PCS.
1	15-060084282	Pump Head, D.25		1
2	15-060091092	Pump Crankcase		1
3	15-060099092	Bearing Cover		1
4	15-060092092	Bearing Cover D.80		1
5	15-060006092	Crankcase Cover		1
6	15-069800972	ConnectingRod		3
7	15-060058512	Plunger Rod		3
8	15-060007492	Piston Pin, Dia. 15mm		3
9/2	15-060035262	Crankshaft, E=9, 30mm		1
10	15-060011182	Ceramic Piston Dia. 25mm		3
11	15-060095532	Valve Cap D.22		6
12	15-060013322	Valve Cage	40	6
13	15-970066512	Valve Spring	40	6
14	15-060014612	Valve	40	6
15	15-060025512	Valve Seat	40	1
16	15-069801973	Valves Assembly	40	6
17	15-060038532	Gland, Back Dia. 25mm	88	3
18	15-802092802	Thrust Ring Dia. 25	88, 91	3
19	15-060078532	Intermediate Ring	88	3
20	15-853515502	Oil Sight Glass		1
21	15-801099002	Circlip Dia. 15		6
22	15-806534002	Key, Rounded (8 x 7 x 35)		1
23	15-803210902	O-Ring, 2.62 x 152		1
24	15-803080702	O-Ring, 1.78 x 69.57		1
25	15-803081702	O-Ring		1
26	15-803080202	O-Ring, Dia 1.78 x 37.82	88, 91	3
27	15-803204002	O-Ring 2.62 x 23.81		6
28	15-803204002	O-Ring Dia. 22.62 x 23.81	40	6

POS NO.	PART NO.	DESCRIPTION	KIT	NO. PCS.
29	15-824140002	Gasket for Coupling, 21.2 x 26 x 1		1
30	15-824230002	Gasket, 34.5 x 42 x 1		1
31	15-803204002	O-Ring		1
32	15-803058002	O-Ring		3
33	15-803902002	BKC Backring, Long Life		3
35	15-802090002	Seal, Oil (17mm)		3
36	15-802092602	Packing, "Super U" (25 x 35)	88, 91	6
37	15-060088322	Anti-Extrusion Ring	88, 91	3
40	15-060018682	Washer, Dia. 14 x 3 x 0.5		3
41	15-843646002	Washer		3
42	15-060072002	Piston Bolt		3
43	15-812848002	Bearing, Roller (35 x 72 x 17) CO		1
44	15-812870002	Bearing, Roller (35 x 80 x 21) CO		1
45	15-852687002	Galvanized Cap TCCE 3/4 Din 908		1
46	15-852629002	Plug, 1/2" G		1
47	15-852712002	Plug, 1"		1
48	15-060020322	Filler Plug w/Dipstick		1
49	15-862216002	Screw, M6x25		4
50	15-863265002	Screw, M10x2		4
51	15-862562002	Screw, M8x20		4
52	15-863590002	Galvanized Bolt M10x80 CO		8
53	15-804300002	Self Lubricating Bushing		3
54	15-802143002	Oil Seal		1
55	15-060015322	Thrust Ring Dia. 25mm	88, 91	3
56	15-802091502	High Pressure Seal Dia. 25x35x5.5	88, 91	3

	KIT 40 CHECK VALVE/O-RING	KIT 37 PLUNGER OIL SEAL	KIT 88 PACKING/ BRASS ASSY	KIT 91 PACKING ONLY
<b>KIT BREAKDOWN</b>				
<b>PART #</b>	<b>15-069817973</b>	<b>15-069814973</b>	<b>15-069838973</b>	<b>15-069841973</b>
<b>TOTAL PCS.</b>	12	3	24	18