



# HDL Series

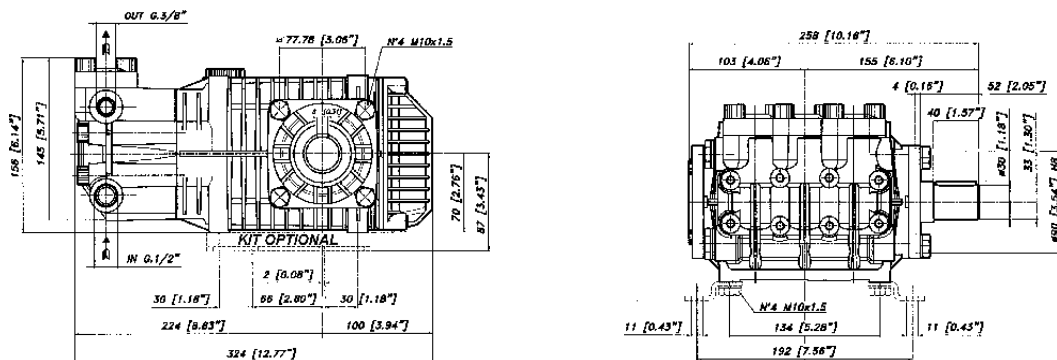
## FEATURES

- The most requested size pump in the pressure cleaning industry.
- Five year limited warranty.
- Forged brass manifold with an exclusive lifetime warranty.
- Large capacity, die-cast, anodized aluminum oil-bath crankcase.
- Over-sized connecting rods for maximum life.
- Heavy-duty ball bearing.
- Solid ceramic plungers with mirror finish and corrosion resistance.
- Stainless steel inlet and discharge valve assemblies.
- Forged valve caps with recessed O-rings.
- Zinc coated manifold bolts for extra corrosion resistance.

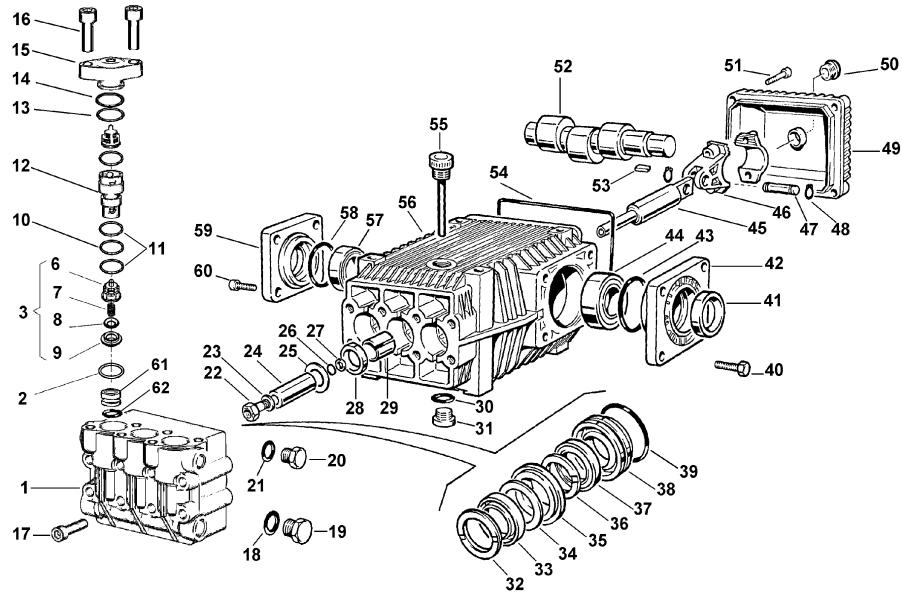
## SPECIFICATIONS

<b>PUMP MODEL</b>	<b>5050</b>
Maximum Volume (GPM)	5
Max. Discharge Pressure (PSI)	5000
Maximum Pump Speed	1450 RPM
Maximum Inlet Pressure	125 psi
Maximum Inlet Vacuum	7.9 in HG
Bore	18 mm
Stroke	18 mm
Crankcase Oil Capacity	40 oz
Maximum Fluid Temperature	165° F
Inlet Port Thread	1/2" 14 BSPP-F
Discharge Port Thread	3/8" 19 BSPP-F
Shaft Diameter	30 mm
Weight	44.9 lbs
Dimensions	12.8" x 10.2" x 6.1"

## DIMENSIONAL DRAWING



# Legacy Model HDL 5050



POS NO.	PART NO.	DESCRIPTION	KIT	NO. PCS.
1	15-060060282	Pump Body HD 5000 D.18		1
2	15-803182802	O-Ring 2.62x17.13 (90 SH)	93	6
3	15-069830973	Check Valve	93	6
6	15-040114322	Valve Guide	93	1
7	15-380054512	Spring	93	2
8	15-060068512	Valve	93	1
9	15-040023512	Valves Assembly Seat	93	1
10	15-803189002	O-Ring Dia.2.62x18.72	94	3
11	15-060066672	Anti-Extrusion Ring D.23	94	6
12	15-060062532	Spacer Valve HD 5000	94	3
13	15-803205002	O-Ring Dia.2.62x25.07 CO	94	3
14	15-060067672	Anti-Extrusion Ring D.30	94	3
15	15-060061282	Cover Valve HD 5000		3
16	15-863880002	Screw TCEI M12x35 UNI 5931		6
17	15-863638002	Screw TCEI M10x110 UNI 5931		8
18	15-824140002	Gasket for Coupling 21.2x26x1		1
19	15-852629002	Plug G 1/2"		1
20	15-852579002	Plug G 3/8		1
21	15-824109002	Copper Gasket Dia.17x22x1		1
22	15-060073512	Piston Bolt		3
23	15-843655002	Washer		3
24	15-060055182	Ceramic Piston D.18x50		3
25	15-843826002	Washer D.11.3x25x0.5 Copper		3
26	15-803055002	O-Ring Dia. 1.78x7.66		3
27	15-803912002	Backup Ring 2031 Dia. 10.8		3
28	15-802090002	Oil Seal Dia. 17	37	3
29	15-804300002	Self Lubricating Bushing		3
30	15-803204002	O-Ring Dia. 2.62x23.81		1
31	15-852687002	Galvanized Cap TCCE 3/4 DIN 908		1
32	15-802061502	Thrust Ring	95, 96	3

POS NO.	PART NO.	DESCRIPTION	KIT	NO. PCS.
33	15-802061602	Super "U" Packing Dia. 18 x 28	95, 96	3
34	15-060085322	Anti-Extrusion Ring	95, 96	3
35	15-060063532	Front Gland for D.18	96	3
36	15-050019322	Seal Packer DN 18/28	95, 96	3
37	15-802061002	V Packing Dia. 18x28x5.5	95, 96	3
38	15-060064532	Rear Gland for D.18	96	3
39	15-803080202	O-Ring Dia. 1.78x37.82	95, 96	3
40	15-863265002	Screw M10x25		4
41	15-802143002	Oil Seal		1
42	15-060092092	Bearing Cover D.80		1
43	15-803081702	O-Ring		1
44	15-812870002	Str. Roller Bearing Dia. 35x80x21 CO		1
45	15-060065512	Piston Guide for D.18		3
46	15-069800972	Connecting Rod		3
47	15-060007492	Piston Pin Dia. 15mm		3
48	15-801099002	Circlip Dia.15		6
49	15-060006092	Crankcase Cover		1
50	15-853515502	Oil Plug G 3/4 with O-Ring		1
51	15-862216002	Screw M6x25		4
52/4	15-060035262	Crankshaft E=9 Dia. 30mm		1
53	15-806534002	Tab 8x7x35		1
54	15-803210902	O-Ring Dia. 2.62x152		1
55	15-060020322	Filler Plug with Dip Stick		1
56	15-060091092	Pump Crankcase		1
57	15-812848002	Str. Roller Bearing Dia. 35x72x17 CO		1
58	15-803080702	O-Ring D.178x69.57		1
59	15-060099092	Bearing Cover		1
60	15-862562002	Screw M8x20		1
61	15-060074512	Washer	94	1
62	15-803181802	O-Ring 2.62x15.88 (90 SH)	94	1

	KIT 93 CHECK VALVE/O-RING	KIT 94 VALVE CONTAINMENT	KIT 95 PACKING ONLY	KIT 96 PACKING/BRASS	KIT 37 OIL SEAL
<b>KIT BREAKDOWN</b>					
<b>PART #</b>	<b>15-069829973</b>	<b>15-069832973</b>	<b>15-069833973</b>	<b>15-069839973</b>	<b>15-069814973</b>
<b>TOTAL PCS.</b>	<b>12</b>	<b>24</b>	<b>18</b>	<b>24</b>	<b>3</b>