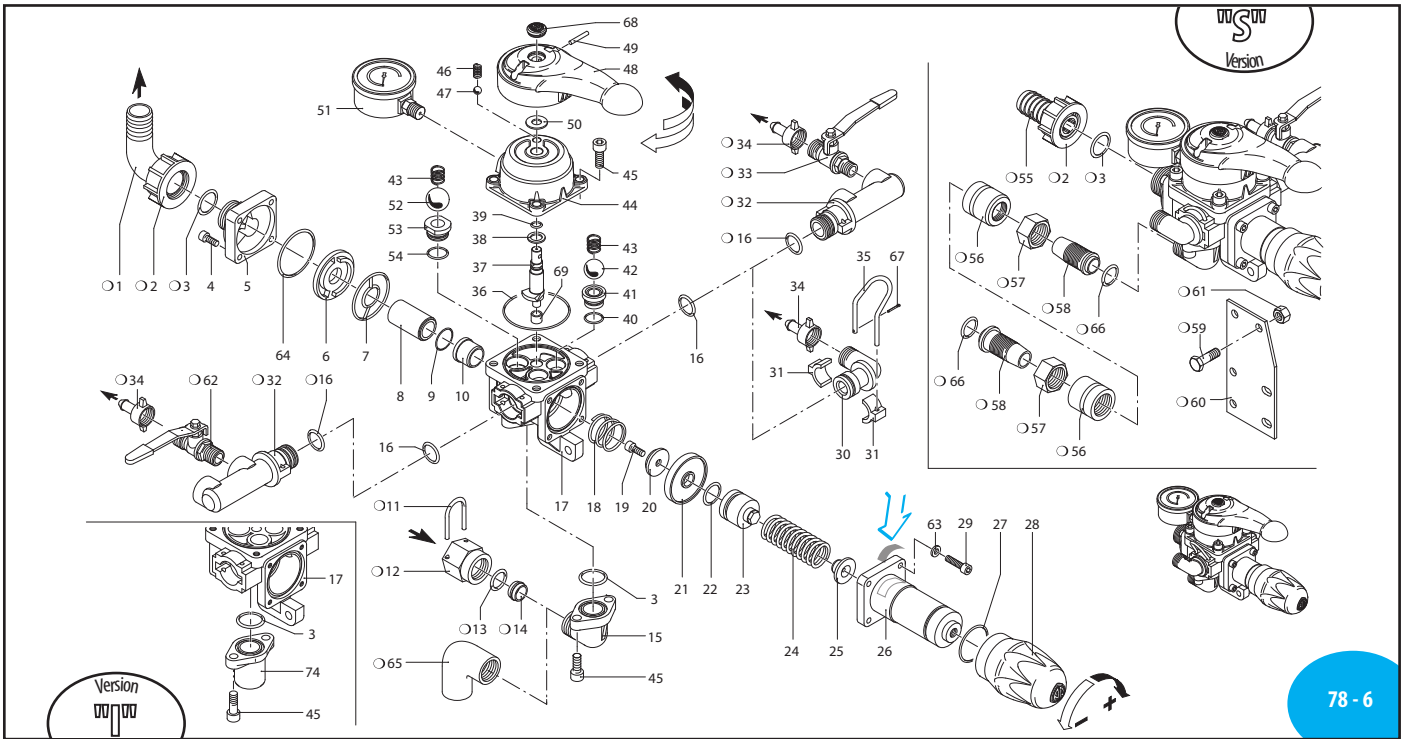


A.R. NORTH AMERICA **BMH 50**



Pos	Code	Description	Qty	Note
1	550370	Elbow Ø 25	1	
2	550242	Ring nut 1" G	1	
3	550350	O-ring Ø 23.81x2.62	2	▶
4	780060	Screw TCEI M6x25	4	C ₁₀
5	1150031	Flange	1	
6	1150021	Plate	1	
7	1150041	Gasket	1	▶
8	1150050	Spacer	1	
9	770590	O-ring Ø 21.95x1.78	1	▶
10	1150060	Seat	1	
11	850760	Fork	1	
12	850750	Ring nut 3/4" G F	1	
13	390180	O-ring Ø 18.72x2.62	1	▶
14	850490	Ring	1	
15	1150880	Fitting 3/4" G	1	Brass
16	390060	O-ring Ø 20.63x2.62	4	▶
17	1150012	Body	1	
18	320420	Spring	1	✕
19	680700	Screw TCEI M6x20	1	SS C ₁₀
20	1150070	Valve	1	
21	1150130	Diaphragm	1	Desmopan ✕
21	1150131	Diaphragm	1	NBR
22	620031	O-ring Ø 25.80x3.53	1	Viton ▶
23	1150180	Piston	1	
24	1150190	Spring	1	✕
25	1150200	Wobble plate	1	
26	1150171	Body spring guide	1	
27	820490	O-ring Ø 34.65x1.78	1	▶
28	1150920	Knob	1	Red
29	1040370	Screw TCEI M6x22	4	C ₁₀
30	1150910	Fitting 1/2" G	2	Brass
31	1150150	Clamp	4	
32	1150161	Body tap	2	
33	160142	Cock 1/2" G M-M SX	2	⊕
34	110130	Ring nut 1/2"	4	
35	1040690	Fork	2	
36	1150250	O-ring Ø 65x2	1	▶
37	1150120	Hub pin	1	✕
38	850720	Washer	1	▶
39	390340	O-ring Ø 7.30x2.4	1	▶
40	740290	O-ring Ø 14x1.78	2	▶
41	850650	Seat	2	
42	850660	Ball	2	SS

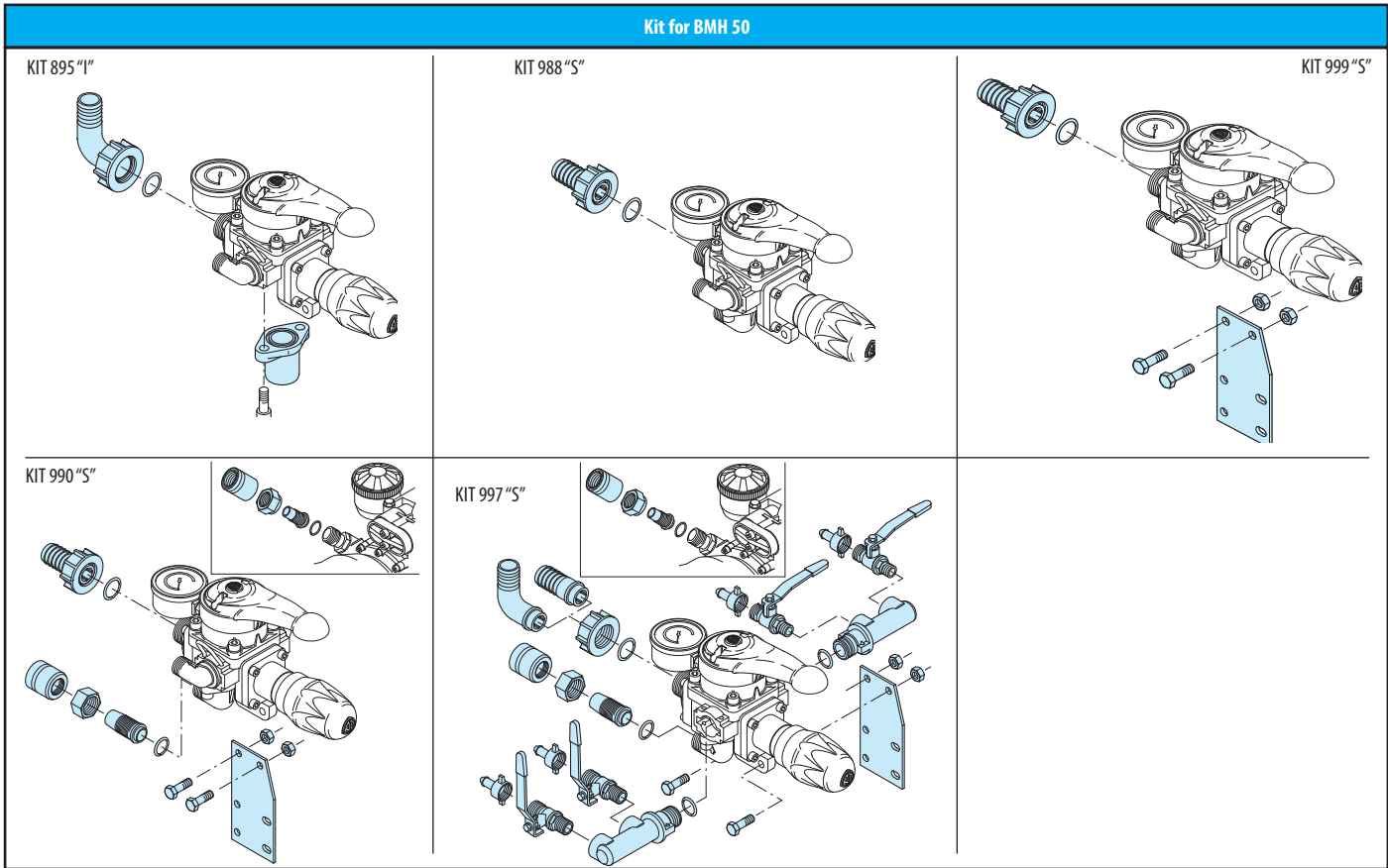
Pos	Code	Description	Qty	Note
43	850680	Spring	3	✕
44	1150900	Body upper distributor	1	
45	320360	Screw TCEI M8x22	6	C ₂₀
46	850830	Spring	1	✕
47	621160	Ball	1	
48	1150890	Lever	1	red
49	1040820	Pin	1	
50	391460	Washer	1	
51	550545	Pressure gauge	1	0-1150 PSI ⊕
51	1151010	Pressure gauge Ø 63	1	0-725-1150 PSI ⊕
52	1150100	Ball	1	SS
53	1150091	Seat	1	
54	880270	O-ring Ø 17.17x1.78	1	▶
55	550210	Pipe Ø 25	1	
56	850770	Ring nut	2	
57	850790	Ring nut 3/4" G	2	
58	850780	Hose tail Ø 19x34	2	
59	180370	Screw TE M8x25	2	C ₂₀
60	850690	Bracket	1	
61	390270	Nut M8	2	C ₂₀
62	160141	Cock 1/2" G M-M DX	2	⊕
63	550331	Washer	4	
64	1150280	O-ring Ø 50.52x1.78	1	▶
65	1150690	Fitting 3/4" G F-F	1	
66	960160	O-ring Ø 17.86x2.62	2	▶
67	1040950	Split pin	2	
68	1150930	Plug	1	
69	1150840	Bushing	1	
74	550394	Flange	1	

KIT 1967 O-Rings			
Pos.	Qty	Pos.	Qty
3	2	54	1
9	1		
13	3		
22	1		
27	1		
36	1		
39	1		
40	2		

KIT 1968 Maintenance repair			
Pos.	Qty	Pos.	Qty
3	2	22	1
7	1	23	1
9	1	24	1
10	1	27	1
16	2	36	1
18	1	38	1
19	1	39	1
20	1	64	1
21	1		

BMH 50

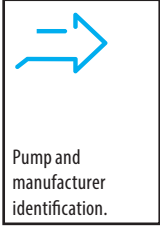
Kit for BMH 50



Control units

Build-in control unit and remote control

○ No part of BMH 50



KIT 895 "I" Build in control			
Pos.	Qty	Pos.	Qty
1	1		
2	1		
3	1		
74	1		
For AR 903 - AR 1053 - AR 1203 BHA/BHP 130 - 150 - 170 - 200 BHS 90 - 105 - 120 - 130 - 150 - 170 - 200			

KIT 988 "S" Remote control			
Pos.	Qty	Pos.	Qty
2	1		
3	1		
55	1		
For AR 713 - AR 813 - AR 1064 - AR 1516 AR 903 - AR 1053 - AR 1203 BHA/BHP 130 - 150 - 170 - 200			

KIT 999 "S" Build in control			
Pos.	Qty	Pos.	Qty
2	1		
3	1		
55	1		
59	2		
60	1		
61	2		
For AR 713 - AR 813 - AR 1064 AR 903 - AR 1053 - AR 1203 BHS/BHA/BHP 130 - 150 - 170 - 200			

KIT 990 "S" Remote control			
Pos.	Qty	Pos.	Qty
2	1	59	2
3	1	60	1
55	1	61	2
56	2	66	2
57	2		
58	2		
For AR 713 - AR 813 - AR 1064 AR 903 - AR 1053 - AR 1203 BHS/BHA/BHP 130 - 150 - 170 - 200			

KIT 997 "S" Remote control			
Pos.	Qty	Pos.	Qty
1	1	57	2
2	1	58	2
3	1	59	2
16	2	60	1
32	2	61	2
33	2	62	2
34	4	66	2
55	1		
56	2		
For AR 713 - AR 813 - AR 1064 AR 903 - AR 1053 - AR 1203 BHS/BHA/BHP 130 - 150 - 170 - 200			

