



# GG Series

## FEATURES

- Designed and engineered for pressure washers.
- Five year limited warranty.
- Forged brass manifold with an exclusive lifetime warranty.
- Die-cast, anodized aluminum oil-bath crankcase.
- Aluminum two piece connecting rods with lubrication channel and forged crankshaft for maximum life.
- Heavy-duty crankshaft bearing.
- Solid ceramic plungers with mirror finish and corrosion resistance.
- Parker® "V" seals for premium performance.
- Stainless steel inlet and discharge valve assemblies.
- Forged valve caps with recessed O-rings to withstand high pressures.
- Dacromet® coated manifold bolts for superior corrosion resistance.
- Precision oil dipstick for proper ventilation of crankcase.
- Flanged for direct couple to gasoline engine with 3/4" shaft (SAE J609)



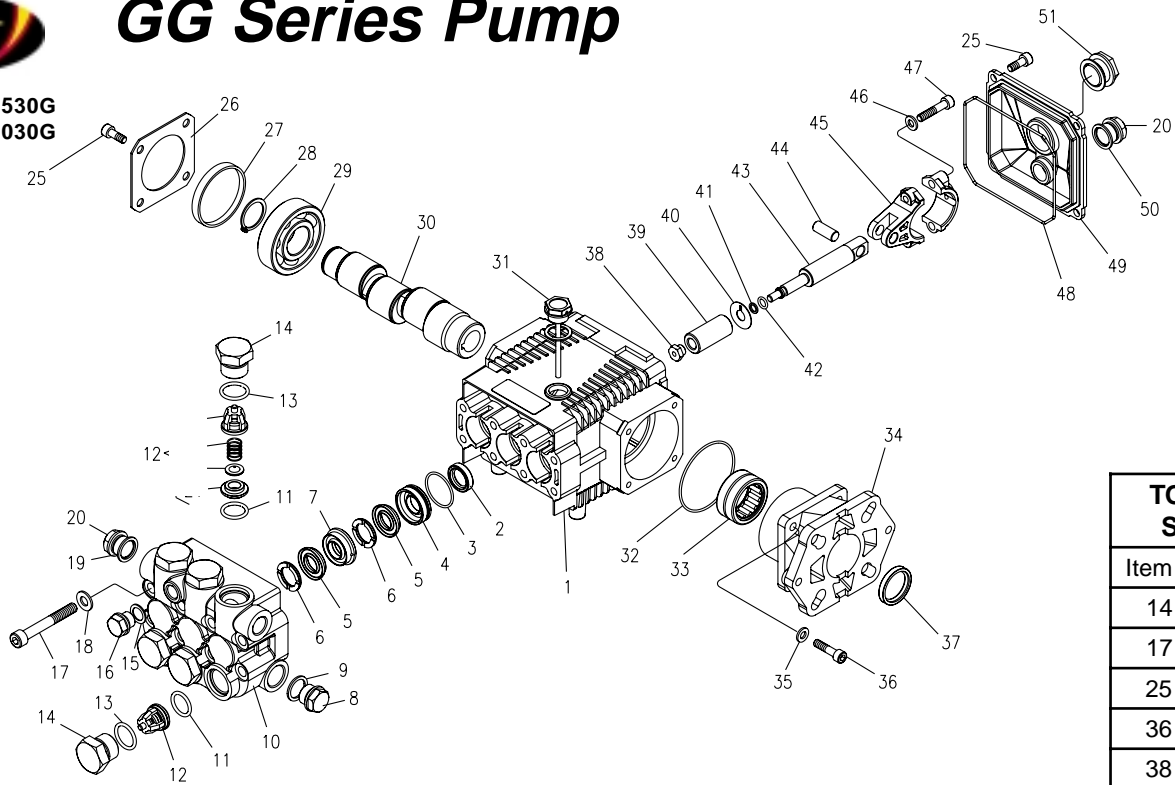
## SPECIFICATIONS

PUMP MODEL	GG2530G	GG3030G
Maximum Volume (GPM)	2.5	3.0
Max. Discharge Pressure (PSI)	3000	3000
Maximum Pump Speed	3400	3400
Maximum Inlet Pressure	125 psi	
Maximum Inlet Vacuum	Flooded	
Bore	15 mm	15 mm
Stroke	3.2 mm	3.8 mm
Crankcase Oil Capacity	14 oz.	
Maximum Fluid Temperature	165°F	
Inlet Port Thread	1/2-14 BSPP-F	
Discharge Port Thread	3/8-19 BSPP-F	
Shaft Diameter	3/4" Hollow	
Weight	16.5 lbs.	
Dimensions (LxWxH)	8.5 x 8.0 x 5.0 in.	



# GG Series Pump

5-1950 GG2530G  
5-1954 GG3030G



TORQUE SPECS	
Item #	Ft.-lbs
14	65
17	22
25	8
36	8
38	9
47	13

## PARTS LIST

ITEM	PART NO.	DESCRIPTION	QTY	ITEM	PART NO.	DESCRIPTION	QTY	ITEM	PART NO.	DESCRIPTION	QTY
1	70-020292	Crankcase	1	18	70-140001	Washer	8	37	70-000105	Crankshaft Seal	1
2*	See Kit Below	Plunger Oil Seal	3	19	70-060306	Copper Washer 3/8"	1	38*	70-030211	Plunger Nut	3
3*	70-060181	O-Ring Ø1.78 x 28.30	3	20	70-160117	Brass Plug 3/8"	2	39*	See Kit Below	Plunger, 15mm	3
4*	70-120120	Pressure Ring, 15mm	3	25	70-180112	Hexagonal Screw	9	40*	70-140027	Copper Spacer	3
5*	See Kit Below	"V" Seal, 15mm	6	26	70-020318	Bearing Cover	1	41*	70-060130	O-Ring Ø1.78x5.28	3
6*	70-030048	Support Ring 15mm	6	27	70-020502	Seal Bearing	1	42*	70-000913	Teflon Ring	3
7*	70-030049	Intermediate Ring 15mm	3	28	70-150003	Snap Ring	1	43	70-000320	Plunger Rod	3
8	70-160120	Brass Plug, 1/2"	1	29	70-021300	Ball Bearing	1	44	70-150204	Connecting Rod Pin	3
9	70-060307	Copper Washer 1/2"	1	30	70-000498	Crankshaft (2530G)	1	45	70-010008	Connecting Rod	3
10	70-160228	Manifold Housing	1		70-000499	Crankshaft (3030G)	1	46	70-140102	Spring Washer	6
11*	70-060155	O-Ring Ø1.78 x 15.54	6	31	70-160012	Oil Dip Stick	1	47	70-180132	Connecting Rod Screw	6
12*	See Kit Below	Valve Assembly	6	32	70-060183	O-Ring 3.53 x 55.56	1	48	70-060104	O-Ring 2.62 x 107.62	1
13*	70-060122	O-Ring Ø2.62 x 18.77	6	33	70-020011	Needle Roller Bearing	1	49	70-020352	Crankcase Cover	1
14	70-160147	Valve Plug	6	34	70-050096	Engine Flange	1	50	70-060302	Gasket, G3/8	1
15	70-060308	Washer, Copper	1	35	70-140002	Spring Washer	4	51	70-070005	Sightglass G3/8	1
16	70-160121	Brass Plug G1/4	1	36	70-180126	Flange Screw	4				
17	70-180118	Manifold Stud Bolt	8								

\* Part available in kit (See below)

## REPAIR KITS

REPAIR KIT NUMBER	70-261408	70-261409	70-261404	70-260028	70-260826
KIT DESCRIPTION	Plunger Seal 15mm	Complete Seal Packing 15mm	Plunger 15mm	Complete Valve	Plunger Oil Seals
ITEM NUMBERS INCLUDED	3, 5, 6	2, 3, 4, 5, 6, 7	38, 39, 40, 41, 42	11, 12, 13	2
NUMBER OF CYLINDERS KIT WILL SERVICE	3	1	1	6	3