



# GT Series

## FEATURES

- Designed and engineered for pressure washers.
- Five year limited warranty.
- Forged brass manifold with an exclusive lifetime warranty.
- Large capacity, die-cast, anodized aluminum oil-bath crankcase.
- Over-sized connecting rods and crankshaft for maximum life.
- Heavy-duty tapered roller bearing.
- Solid ceramic plungers with mirror finish and corrosion resistance.
- Parker "V" seals for premium performance.
- Stainless steel inlet and discharge valve assemblies.
- Forged valve caps with recessed O-rings to withstand high pressures.
- Dacromet® coated manifold bolts for superior corrosion resistance.



## SPECIFICATIONS

PUMP MODEL	GT-4035	GT-4040	GT-5030	GT-6035
Maximum Volume (GPM)	4.2	4	5	6
Max. Discharge Pressure (PSI)	4000	4000	3000	3500
Maximum Pump Speed	1325	1030	1060	1540
Maximum Inlet Pressure	125 psi			
Maximum Inlet Vacuum	9 ft. water (7.9 in. Hg)			
Bore	20	20	22	20
Stroke	14	17	17	17
Crankcase Oil Capacity	40.6 oz.			
Maximum Fluid Temperature	165° F			
Inlet Port Thread	1/2-14 BSPP-F			
Discharge Port Thread	3/8-19 BSPP-F			
Shaft Diameter	25 mm			
Weight	33 lbs.			
Dimensions	12.5 x 9.3 x 6.9 in.			

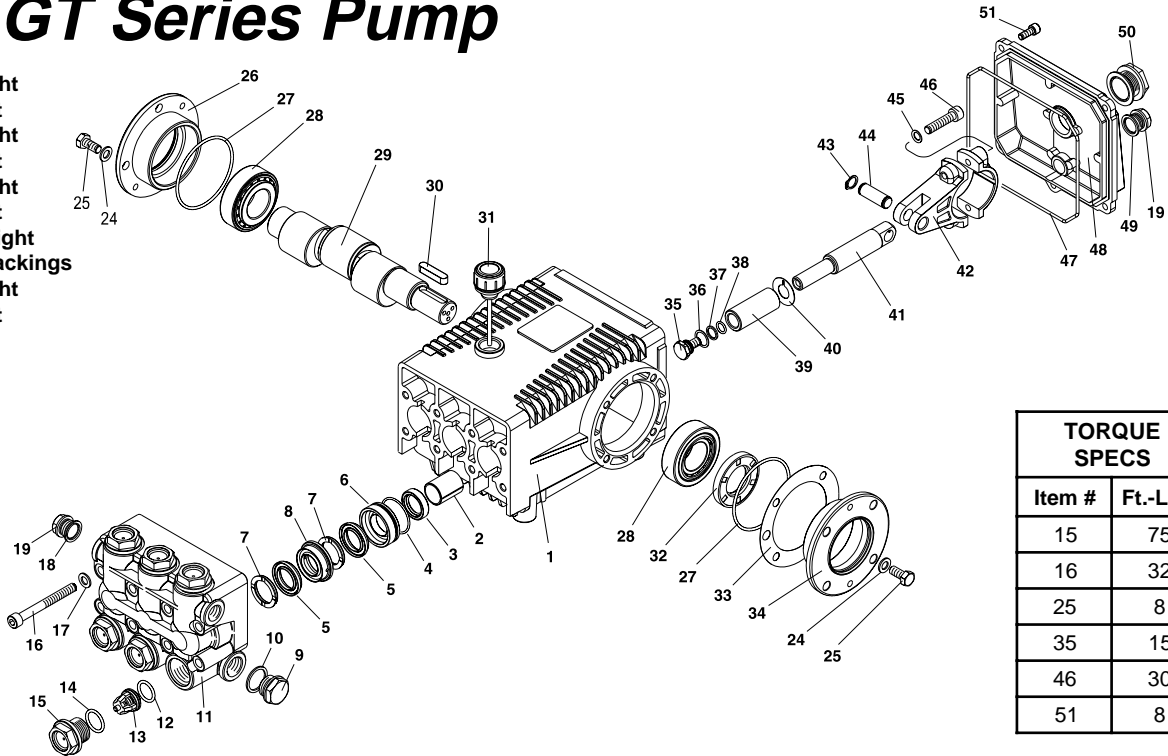
**LEGACY PUMPS • USA**

Phone: 1-360-833-1600 • Fax 1-360-833-9200



# GT Series Pump

- 5-1926 GT 4035 Right
- 5-1927 GT 4035 Left
- 5-1924 GT 4040 Right
- 5-1925 GT 4040 Left
- 5-1928 GT 5030 Right
- 5-1929 GT 5030 Left
- 5-1930 GT 5030H Right
- High Heat Packings
- 5-1932 GT 6035 Right
- 5-1933 GT 6035 Left



TORQUE SPECS	
Item #	Ft.-Lbs.
15	75
16	32
25	8
35	15
46	30
51	8

## PARTS LIST

ITEM	PART NO.	DESCRIPTION	QTY	ITEM	PART NO.	DESCRIPTION	QTY	ITEM	PART NO.	DESCRIPTION	QTY
1	70-020210	Crankcase	1	13*	See Kit Below	Valve Assembly	6	35*	70-180000	Plunger Bolt	3
2	70-060200	Plunger Guide	3	14*	70-060165	O-Ring Ø2.62 x 20.29	6	36*	70-140013	Copper Spacer	3
3*	See Kit Below	Plunger Oil Seal	3	15	70-160130	Valve Plug	6	37*	70-060102	O-Ring Ø1.78 x10.82	3
4*	70-060108	O-Ring Ø1.78 x 31, 47	3	16	70-180136	Manifold Stud Bolt	8	38*	70-000902	Teflon Ring	3
5*	See Kit Below	"V" Seal, Plunger	6	17	70-140301	Washer	8	39*	See Kit Below	Plunger (GT 4035, 4040, 6035)	3
	See Kit Below	"V" Seal Plunger	6	18	70-060306	Copper Washer 3/8"	1		See Kit Below	Plunger (GT 5030)	3
6*	70-120107	Pressure Ring (GT 4035, 4040, 6035)	3	19	70-160117	Brass Plug 3/8"	1	40*	70-140014	Copper Spacer	3
	70-120108	Pressure Ring (GT 5030)	3	24	70-140001	Washer	8	41	70-000300	Plunger Rod	3
7*	70-030000	Support Ring (GT 4035, 4040, 6035)	6	25	70-180203	Hexagonal Screw	8	42	70-010000	Connecting Rod	3
	70-030001	Support Ring (GT 5030)	6	26	70-050054	Closed Bearing Housing	1	43	70-150000	Snap Ring	6
8*	70-030012	Intermed. Ring (GT 4035, 4040, 6035)	3	27	70-060100	O-Ring Ø2.62 x 71.12	2	44	70-150200	Connecting Rod Pin	3
	70-030013	Intermed. Ring (GT 5030)	3	28	70-020004	Roller Bearing, Tapered	2	45	70-140103	Spring Washer	6
9	70-160120	Brass Plug, 1/2"	1	29	70-000487	Crankshaft (GT 4040, 5030, 6035)	1	46	70-180101	Connecting Rod Screw	6
10	70-060307	Copper Washer 1/2"	1		70-000488	Crankshaft (GT 4035)	1	47	70-060185	O-Ring Ø2.62 x 152.07	1
11	70-160217	Manifold Head	1	30	70-020604	Crankshaft Key	1	48	70-020351	Crankcase Cover	1
12*	70-060119	O-Ring Ø2.62 x 17.13	6	31	70-160007	Oil Dip Stick	1	49	70-060302	Gasket, G3/8	1
				32	70-000100	Crankshaft Seal	1	50	70-070005	Sight Glass G3/4	1
				33	70-030100	Shim	2	51	70-180112	Cover Screw	5
				34	70-050053	Bearing Housing	1				

\* Part available in kit (See below)

## REPAIR KITS

REPAIR KIT NUMBER	70-260020	70-260110*	70-261211	70-260811**	70-260024	70-260112	70-260007	70-260023
KIT DESCRIPTION	Plunger Seal GT-4040, GT-6035 GT-4035	Plunger Seal GT-5030	Complete Seal Packing GT-4040 GT-6035 GT-4035	Complete Seal Packing GT-5030	Plunger GT-4040 GT-6035 GT-4035	Plunger GT-5030	Complete Valve (all pumps)	Plunger Oil Seals (all pumps)
ITEM NUMBERS INCLUDED	4, 5, 7	4, 5, 7	3, 4, 5, 6, 7, 8	3, 4, 5, 6, 7, 8	35, 36, 37, 38, 39, 40	35, 36, 37, 38, 39, 40	12, 13, 14	3
NUMBER OF CYLINDERS KIT WILL SERVICE	3	3	1	1	1	1	6	3

\* High Heat, Use 70-262922 GT-5030H/R

\*\* High Heat, Use 70-262921 GT-5030H/R