



GX 8030/1025

FEATURES

- Designed and engineered exclusively for pressure washers.
- Five year limited warranty.
- Forged brass manifold with an exclusive lifetime warranty.
- Large capacity, die-cast, anodized aluminum oil-bath crankcase.
- Over-sized connecting rods for maximum life.
- Heavy-duty tapered roller bearing.
- Solid ceramic plungers with mirror finish and corrosion resistance.
- Stainless steel inlet and discharge valve assemblies.
- Forged valve caps with recessed O-rings.
- Dacromet® coated manifold bolts for extra corrosion resistance.



SPECIFICATIONS

PUMP MODEL	GX 8030	GX 1025
Maximum Volume (GPM)	8	10.6
Max. Discharge Pressure (PSI)	3000	2500
Maximum Pump Speed	1460	1725
Maximum Inlet Pressure	125 psi	
Maximum Inlet Vacuum	9 ft. water (7.9 in. Hg)	
Bore	25mm	25mm
Stroke	15mm	17mm
Crankcase Oil Capacity	40 oz.	
Maximum Fluid Temperature	165° F	
Inlet Port Thread	3/4" BSP	
Discharge Port Thread	1/2" BSP	
Shaft Diameter x Shaft Length	25mm x 55mm	
Weight	39 lbs	
Dimensions (L x W x H)	12.85 x 10.23 x 6.45	

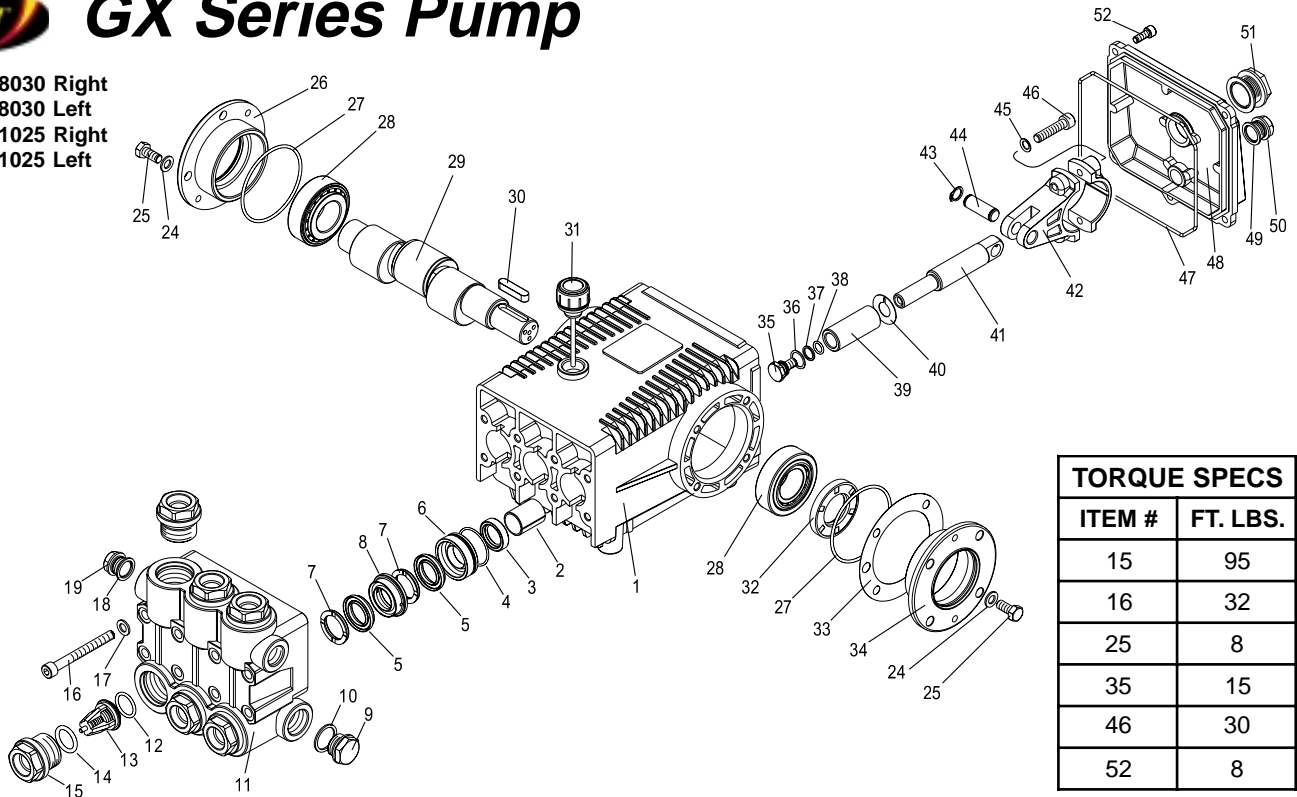
LEGACY PUMPS • USA

Phone: 1-360-833-1600 • Fax 1-360-833-9200



GX Series Pump

5-1942 GX 8030 Right
 5-1943 GX 8030 Left
 5-1949 GX 1025 Right
 5-1948 GX 1025 Left



TORQUE SPECS	
ITEM #	FT. LBS.
15	95
16	32
25	8
35	15
46	30
52	8

PARTS LIST

ITEM	PART NO.	DESCRIPTION	QTY	ITEM	PART NO.	DESCRIPTION	QTY	ITEM	PART NO.	DESCRIPTION	QTY
1	70-020210	Crankcase	1	18	70-060307	Copper Washer 1/2	1	37*	70-060102	O-Ring Ø1.78x10.82	3
2	70-060200	Plunger Guide	3	19	70-160120	Brass Plug 1/2	1	38*	70-000902	Teflon Ring	3
3*	See Kit Below	Plunger Oil Seal	3	24	70-140001	Washer	8	39*	See Kit Below	Plunger 25mm	3
4*	70-060108	O-Ring Ø1.78 x 37.82	3	25	70-180203	Flange Screw	8	40*	70-140014	Copper Spacer	3
5*	See Kit Below	V Seal, Dia. 25mm	6	26	70-050054	Closed Bearing Housing	1	41	70-000300	Plunger Rod	3
6*	70-120110	Pressure Ring 25mm	3	27	70-060100	O-Ring Ø2.62 x 71.12	2	42	70-010000	Connecting Rod	3
7*	70-030002	Support Ring 25mm	6	28	70-020004	Roller Bearing	2	43	70-150000	Snap Ring	6
8*	70-030015	Intermediate Ring	3	29	70-000447	Crankshaft (GX 8030)	1	44	70-150200	Connecting Rod Pin	3
9	70-160133	Brass Plug, 3/4	1		70-000474	Crankshaft (GX 1025)	1	45	70-140103	Spring Washer	6
10	70-060311	Copper Washer 3/4	1	30	70-020604	Crankshaft Key	1	46	70-180101	Connecting Rod Screw	6
11	70-160223	Manifold Housing	1	31	70-160007	Oil Dip Stick	1	47	70-060185	O-Ring Ø2.62 x 152.07	1
12*	70-060105	O-Ring Ø2.62 x 23.47	6	32	70-000100	Crankshaft Seal	1	48	70-020351	Crankcase Cover	1
13*	See Kit Below	Valve Assembly	6	33	70-030100	Shim	2	49	70-060302	Gasket, G3/8	1
14*	70-060187	O-Ring Ø3.53 x 25.80	6	34	70-050053	Bearing Housing	1	50	70-160117	Brass Plug 3/8	1
15	70-160145	Valve Plug	6	35*	70-180000	Plunger Bolt	3	51	70-070005	Sight Glass G3/4	1
16	70-180133	Manifold Stud Bolt	8	36*	70-140013	Copper Spacer	3	52	70-180112	Cover Screw	5
17	70-140301	Lock Washer	8								

* Available in kit (See below)

REPAIR KITS

KIT NUMBERS	70-260207	70-260208	70-260209	70-260025	70-260023
KIT DESCRIPTION	Plunger Seal 25 mm	Seal Packing 25mm	Plunger 25mm	Complete Valve	Plunger Oil Seals
ITEMS NUMBERS INCLUDED	4, 5, 7	4, 5, 6, 7, 8	35, 36, 37, 38, 39, 40	12, 13, 14	3
NUMBER OF CYLINDERS KIT WILL SERVICE	3	1	1	6	3