

JENNY PRODUCTS INC.
 HPW2560, GES, 208-575/60/3, N/C, LWC, ELECT-IGN

HPW2560, GES, LWC, ELECT-IGN

208-230-460-575/60/3, NIC, LWC

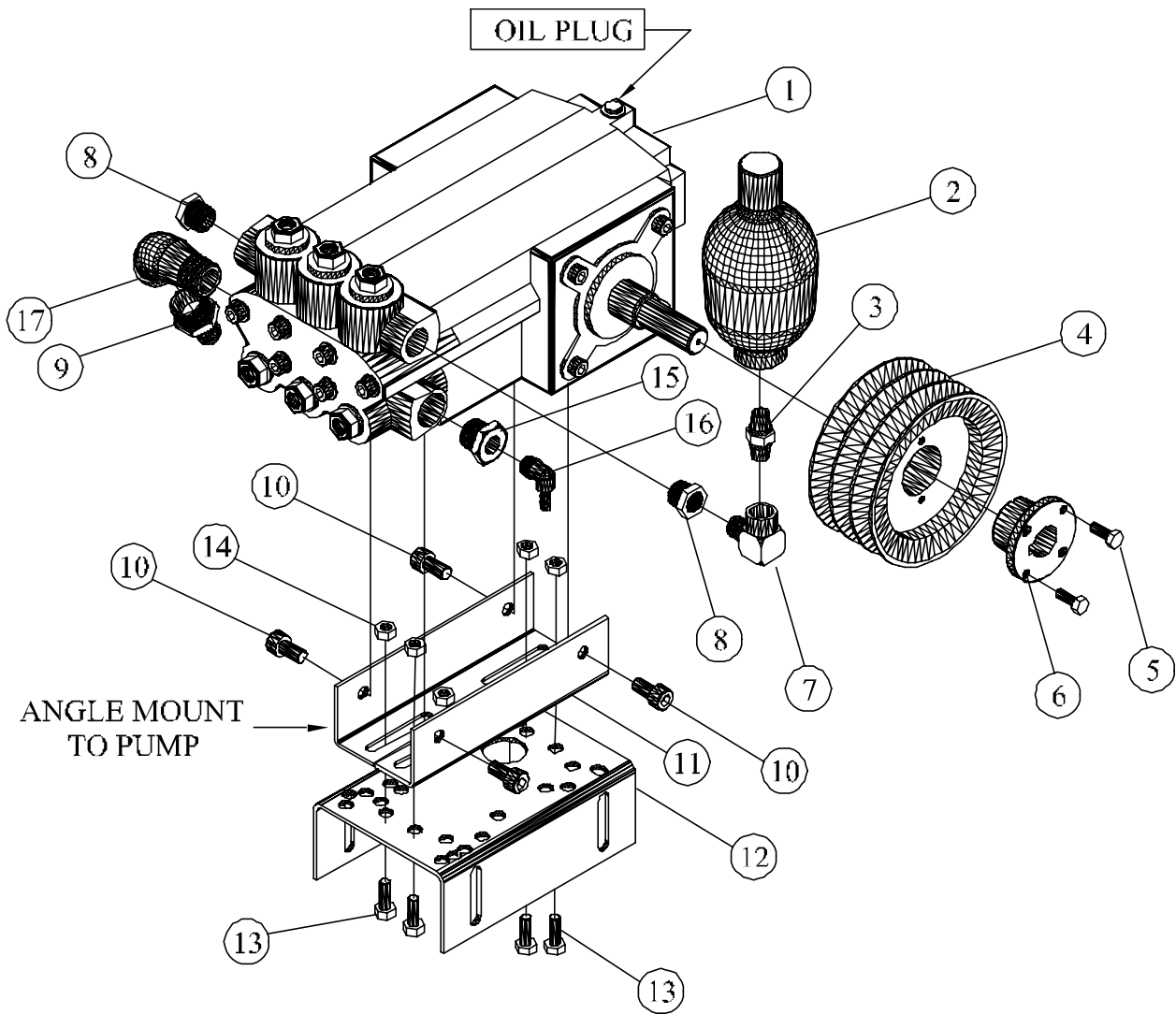
PARTS LIST

Note: Figure 20- (Common Parts)

Electrical Dia. File: Jw 306

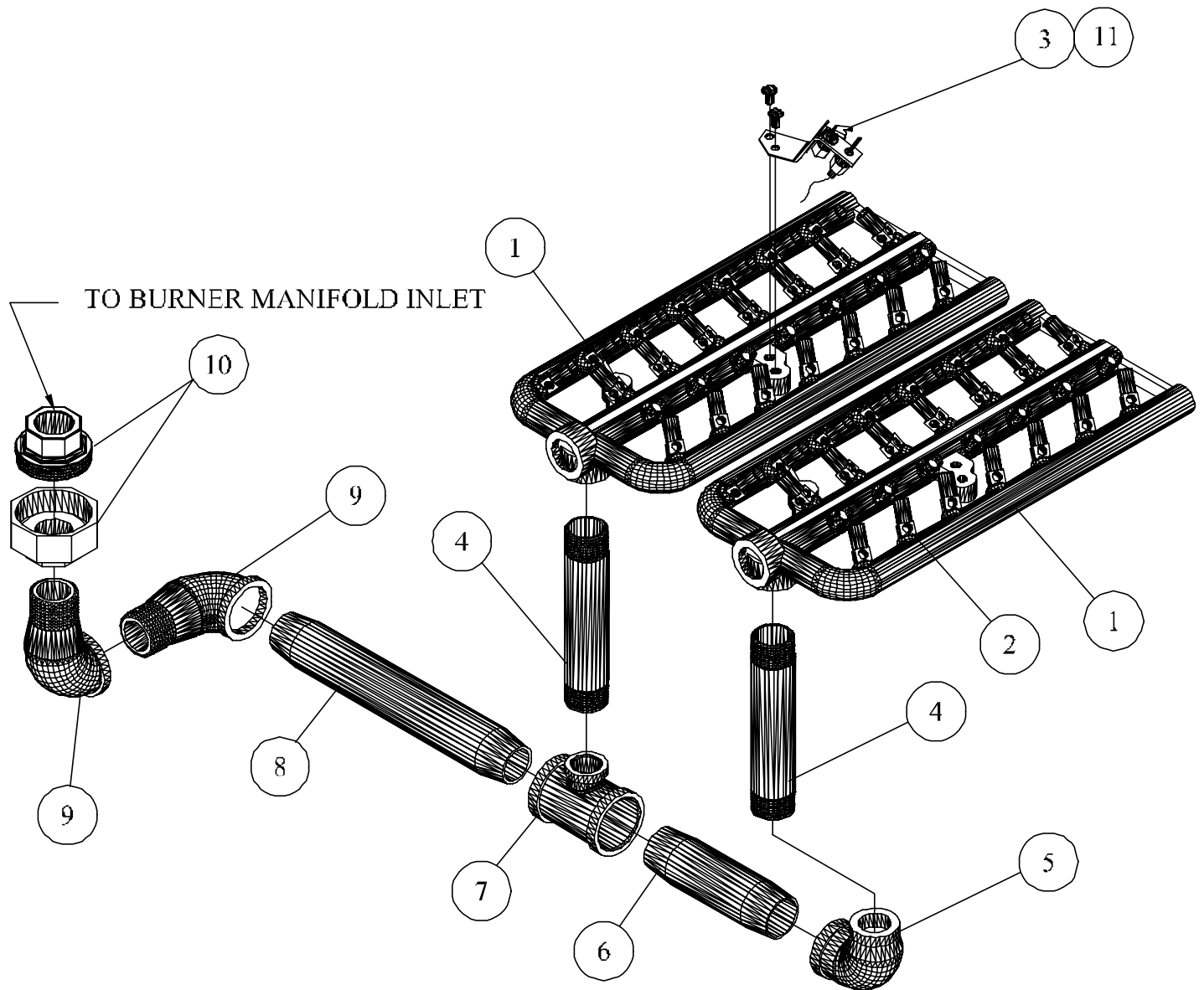
ITEM NO.	DESCRIPTION	QTY.	PART NO.
1	CHASSIS,MODULE,MOTOR-PUMP,GES,LES	1	JD8500
2	CHASSIS,MODULE,COIL,STL,PNTD,SIZE-C	1	JD8506
3	CASING,COIL,ASSY,STEEL,2100,SIZE-C	1	JP5507-A
4	COVER,ACCESS,CASING,COIL,GES,1600-4800	1	JP5314-01
5	LEGS,STATIONARY,STEEL,PAINTED,GES	4	JD8507
6	LEG,ADJUSTABLE,FRONT,STEEL,PAINTED,GES	1	JD8508
7	LEG,ADJUSTABLE,REAR,STEEL,PAINTED,GES	1	JD8509
8	PANEL,SUPPORT,COVER,REAR,STL,PAINTED,GES	1	JD8510
9	PANEL,SIDE,MODULE,CHASSIS,MTR,PMP,ST,GES	1	JD8515
10	BRACKET,SUPPORT,BURNER,ST,SIZE-C	2	JD8526
11	SHIELD,HEAT,BURNER,ST,PAINTED,SIZE-C	1	JD8520
12	COVER,SS,ASSY,NEW,GES	1	JD8523
13	INSULATION,CERAMIC,1-1/2 X 42 X 69 ,#6	1	JD3085
14 ASSY SEE FIG 1-5	TANK,FLOAT,SS,LARGE,BOLT-ON,GES	1	JD8245
15 ASSY SEE FIG 1-8	VALVE,FLOAT,FITTING,ASSY	1	
16	NIPPLE,BRASS,1/2 NPT X 3" LONG	1	JD3094-02
17	ELBOW,STREET,BRASS,FORGED,1/2NPT	1	JD 800-01
18	CONNECTOR,BRZ,3/4 GARDEN HOSE,X 1/2 NPTM,SWIV	1	JD7142
19	WASHER,STRAINER,MESH,WIRE,BRASS,#30	2	JD 809
20-A	MOTOR,10HP,230-480/60/3,1725RPM,TEFC,F2,CF	1	JB3019
20-B	MOTOR,10HP,575/60/3,1725RPM,TEFC,F2,CF	1	JB3020
21	PULLEY,CI,TG,TH,3BK55H,4.5PDA,4.9PDB	1	JD3904-76
22	BUSHING,PULLEY,TAPERED,1-1/8"BORE	1	JD3915-04
23	CONNECTOR,RELIEF,STRAINER,.700-.950,1NPTM	3	JD1687-19
24	WIRE,SO,CPE,BLACK,8/4	1.5	JE 479
25 ASSY SEE FIG. 20-2	SWITCH,PRESSURE,W/BRACKET,WELDED,ASSY	1	JP7731
26 ASST SEE FIG 1-3	MANIFOLD,FITTING,VALVE,HPW2560,ASSY,GES	1	JD8215
27	BELT,VEE,COG,BX43	3	JD3959-07
28 ASSY SEE FIG. 20-1	VALVE,SOLENOID,SOLUTION,24V,1/4NPT	1	JD2162-F
29 ASSY SEE FIG 1-1	PUMP,MOUNTING & FITTING,ASSY HPW2560,GES	1	JD8317
30-A ASSY SEE FIG 1-4A	CONTROL,INLET,NAT,BURNER,ASSY,HPW2560,GES	1	JD7881
30-B ASSY SEE FIG 1-4B	CONTROL,INLET,LP,BURNER,ASSY,HPW2560,	1	JD7886
31-A ASSY SEE FIG 1-2	MANIFOLD,BURNER,ASSY,HPW2560,GES	1	JD7895
31-B ASSY SEE FIG 1-2	MANIFOLD,BURNER,ASSY,HPW2560,LES	1	JD7884
32 ASSY SEE FIG 1-6	BOX,JUNCTION,PANEL,FRONT,230/460/3,12-37A,GES	1	JE2013
33 ASSY SEE FIG 1-7	PLATE,COVER,PANEL,CONT,BOX,JCT,HPW,GES	1	JD8513
34	HOSE,HYD,3K PSI,56" L,3/8NPTM,3/8NPTM	1	JD7994
35	COIL,GAS,FIRED,1/2" PIPE,SCH80,HPW2560	1	JP5508-A
36	TEE,FEMALE,STEEL,PLATED,1/2NPT	1	JD3734-01
37	BUSHING,REDUCER,HEX,STEEL,PLATED,1/2 X 3/8	2	JD2599
38	PLUG,QUICK COUPLING,BRASS,3/8 NPTM	1	JD3103-11
39	ELBOW,REDUCER,ST,PLTD,90DEG,FEM,1/2 X 3/8	1	JD7847
40	THERMOSTAT,IMMERSION,SP,ST,NC,240 DEG F	1	JD7137
41	RING,CASING,COIL,SS,22-1/4OD X 9-15/16 ID	1	JD3017
42	MOLDING,RUBBER,FOAM,ADHESIVE,1/2W X 1/8T	4.166	JD3782-B
43	CLAMP,WIRE,IGNITION,STAND OFF	1	JD7001
44	GROMMET,RUBBER,BLACK,5/8" I.D.	5	JD3385
45	GROMMET,RUBBER,BLACK,7/16" I.D.	5	JD3385-01
46	CLAMP,CABLE,NYLON,3/8"	3	JD6055

47	GROMMET,RUBBER,BLACK,1-1/2 I.D.	3	JP 675
48	STRAINER,CHEMICAL,BRASS,1/4" HOSE BARB	1	JD7140-A
49	TUBING,PVC,CLEAR,3/8 OD X 1/4ID	7.1	JD3087
50	CLAMP,SLEEVE,PLASTIC,3/8 I.D.	6	JD2759
51	WASHER,LOCK,SPLIT,STEEL,PLATED,1/2"	4	JD 615
52	WASHER,FLAT,SERIES,"N",STEEL,PLATED,1/2	4	JD7028
53	SCREW,CAP,HEX,HD,STEEL,PLATED,1/2-13 X 1"	4	JD1165
54	SCREW,THUMB,STEEL,PLATED,W/ SHOULDER,1/4-20X1/2	2	JD1433
55	NUT,SPEED,TINNERMAN,1/4-20	2	JD7042
56	SCREW,MACHINE,PHILLIP,ST,PL,10-24 X 3/8	2	JD3846
57	HOSE,HYD,3K PSI,23"L,3/8NPTM,90D-3/8NPTM	1	JD7542
58	SCREW,FLANGE,HEX,SERR,STL,PLATED,1/4-20 X 1/2"	22	JD7904-A
59	BOLT,ELEVATOR,STEEL,PLATED,3/8 X 2-1/2,1"HD	2	JD7906-G
60	SCREW,FLANGE,HEX,SERR,ST,PL,5/16-18 X 1/2	2	JD7905
61	SCREW,FLANGE,HEX,SERR,ST,PLATED,3/8-16 X 3/4	39	JD7906-A
62	NUT,LOCK,FLANGE,HEX,SERR,STEEL,PLATED,3/8-16	17	JD7774-F
63	SCREW,CAP,HEX,STEEL,PLATED,FLT,3/8-16 X 2-1/4"	2	JD7035
64	NUT,LOCK,FLANGE,HEX,SERR,STEEL,PLATED,1/4-20	4	JD7774-D
65	SCREW,SLF,DRL,PHILLIP,STEEL,PLATED,#8 X 1/2	4	JD6050
66	SCREW,SLF,DRL,HEX,WASHER,PLATED,#10 X 5/8	6	JD7074-A
67	SCREW,CARRIAGE,GRS,STEEL,PLATED,3/8 X 6	2	JD7798
68	J-BOLT 3/8-16 X 4" LONG	2	JP7182
69	CLAMP,HOSE,GEAR,WORM,SS,9/16 TO 1-1/16 DIA	4	JD1229-A
70	RECEPTICAL,CLIP-ON,STEEL,DACROTIZED	10	JP7733-01
71	HOSE,RUBBER,GARDEN,5/8	3.4	JL 146
72	SCREW,SLF,TAPED,PHILLIP,STL,PL,8-32 X 3/8	12	JD3043
73	LUG,TERMINAL,COPPER,3/16 BOLT,6/14 GAUGE	1	JD6152
74	PLATE,NAME,ALUM,PRINT,BLACK,4X4	1	JD3456
75	TAG,WARNING,WATER,TRAP,GAS FIRED UNIT	1	JD7207
76	TAG,WARNING,GAS,PRESSURE	1	JD3097
77	HOSE,WASH,PRESSURE,3000PSI,250F,3/8 X 50FT	1	JD7790-A
78	GUN,TRIGGER,3000PSI,8GPM,320F	1	JD6068-B
79	LANCE,INSULATED,STEEL,ZINC,-PLATED,1/4 X 36	1	JP7080-O
80	SOCKET,QUICK COUPLING,BRASS,3/8" NPTF	1	JD3102-05
81	SOCKET,QUICK COUPLING,BRASS,1/4" NPTF	1	JD3102-02
82	NOZZLE,SPRAY,PSI,SS,QCK CON,0 DEG,O#7.5	1	JD7755-07
83	NOZZLE,SPRAY,PSI,SS,QCK CON,15 DEG,O#7.5	1	JD7756-07
84	NOZZLE,SPRAY,PSI,SS,QCK CON,25DEG,O#7.5	1	JD7757-07
85	NOZZLE,SPRAY,PSI,SS,QCK CON,40DEG,O#7.5	1	JD7758-07
86	SCREW,PHILLIPS,HEAD,"N",COVER	10	JP7733-01
87	RETAINER,SCREW,PHILLIPS,HEAD,"N"	10	JP7733-02
88	SCREEN,COVER,MACHINE,STEEL,PAINTED	1	JP7733-01
89	RIVET,AL.,.160-.164 HOLES,.063-.125,GRP,5/32	16	JP7733-02
90	WASHER,FLAT,S.S.,7/8 O.D. X 5/32 I.D. X 20 GA.	16	JP7733-03
91	DECAL,NUMBER,MODEL,HPW2560,BLUE,LARGE	1	JD8461
NOT SHOWN	DECAL,DANGER,WARNING,CAUTION,LARGE	1	JD7239
NOT SHOWN	DECAL,WARNING,VALVE,TURN-OFF	1	JD6155-A
NOT SHOWN	DECAL,NOTICE,GROUND,4MILTHK,SYR WHITE	1	JD2344-01
NOT SHOWN	DECAL,MADE-IN-THE-USA,JENNY	1	JD6211
NOT SHOWN	DECAL,PACKED,GROOMED,TESTED	1	JD6013
NOT SHOWN	DIVERTER,DRAFT,VERTICAL,10"	1	JD3018



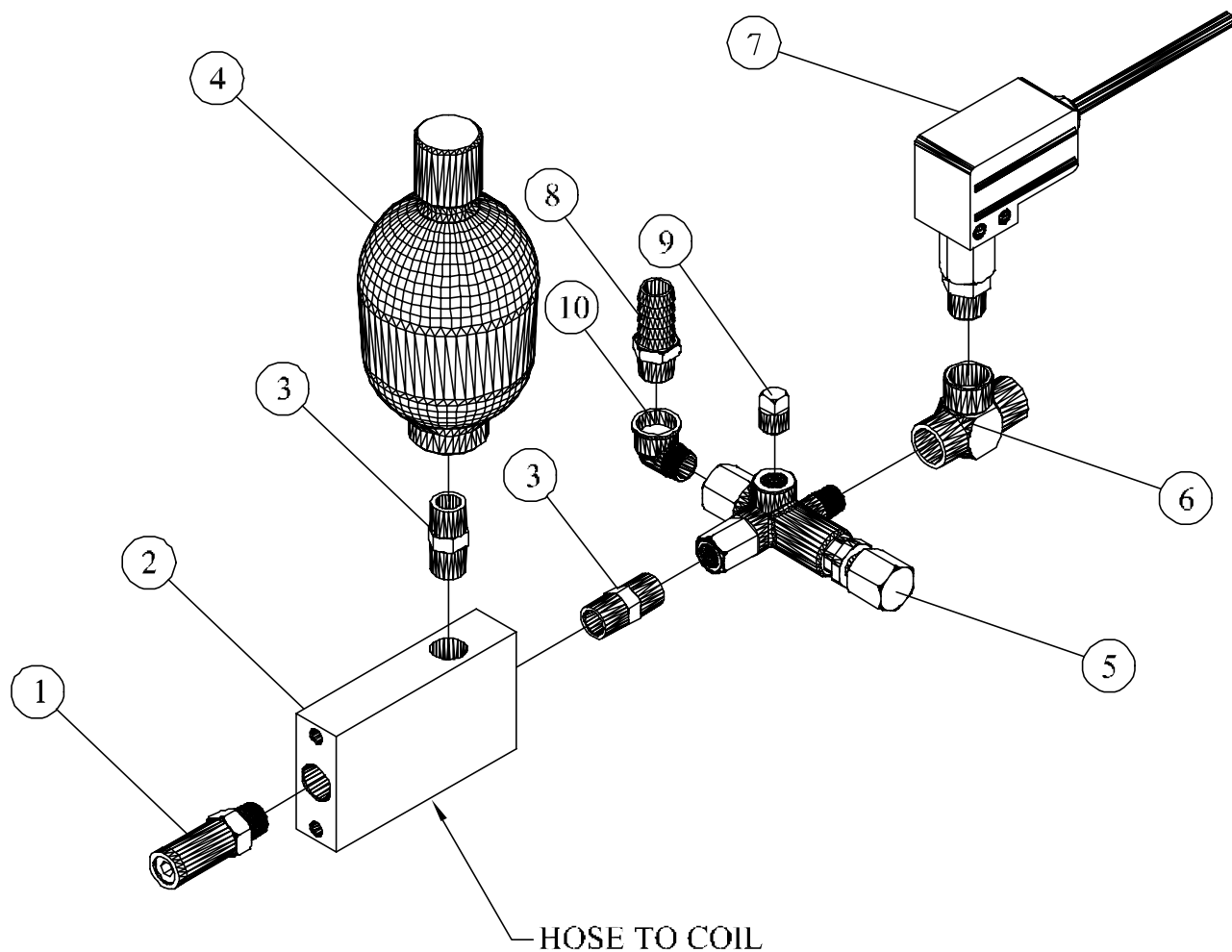
ITEM NO.	QTY.	DESCRIPTION	PART NO.
1	1	PUMP, PLUNGER, TRIPLEX, 2500PSI, 5.9GPM, HYPRO	JD7479
2	1	ACCUMULATOR, BLADDER, 3000# WP, 1050# CHARGE	JD7646-I
3	1	NIPPLE, HEX, STEEL, PLATED, 3/8NPT X 3/8NPT	JD3716-01
4	1	PULLEY,C1,TG,TH,3BK55H,4.5PDA,4.9PDB	JD3904-76
5	2	H.H.B.1/4-20 UNC-3/4 CLS 5 RECEIVED W/ BUSHING	
6	1	BUSHING, PULLEY, TAPERED, 1" BORE	JD3915-09
7	1	ELBOW,STREET,STEEL,PLATED,3/8NPT	JD3717-03
8	2	BUSHING, REDUCER, HEX, STEEL, PLATED, 1/2 X 3/8	JD2599
9	1	SPUD,HOSE,BRASS,5/8HOSEX3/4NPT	JP6595
10	4	BOLTS RECEIVED W/ PUMP	
11	2	ANGLE, PLATES, RECEIVED, W/ THE, PUMP	
12	1	PLATE, MOUNTING, STEEL, PAINTED, JB	JD8016
13	4	SCREW, FLANGE, HEX, SERR, STEEL PLATED, 3/8-16 X 3/4	JD7906-A
14	4	NUT, LOCK, FLANGE, HEX, SERR, STEEL, PLATED, 3/8-16	JD7774-F
15	1	BUSHING, REDUCER, HEX, BRASS, 3/4 X 3/8	JD3114
16	1	BARB, HOSE, ELBOW, MALE, BRASS, 1/4 HS X 3/8 NPT	JD7871
17	1	ELBOW,STREET,BRASS,3/4"NPT	JD7988

FIGURE 1-1 (Pump Mounting & Fitting, JD8317, HPW2560, Ass'y)



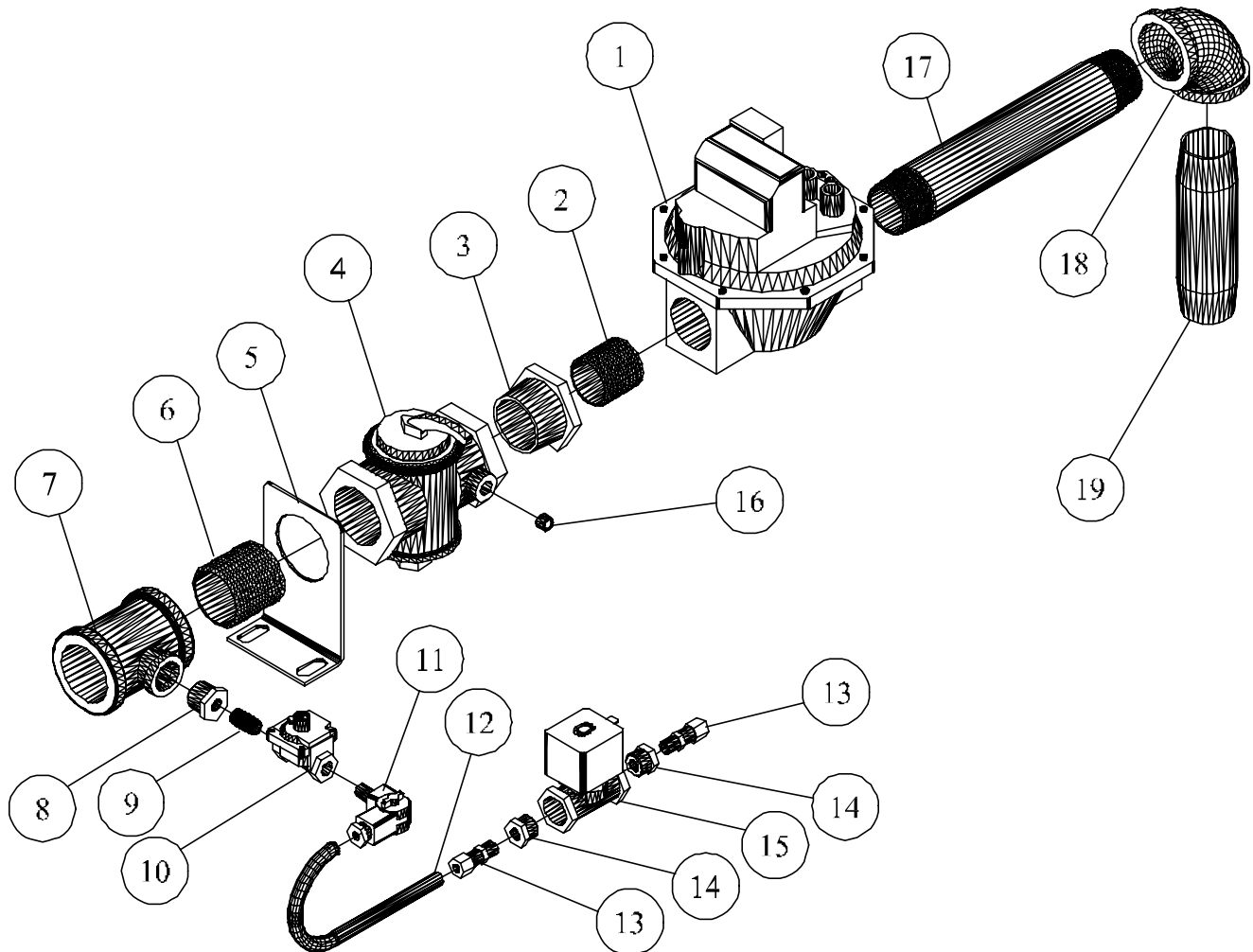
ITEM NO.	QTY.	DESCRIPTION	PART NO.
1A	2	BURNER, NAT, #640 JETS, 0#52, U-29	JD3128-C
1B	2	BURNER, LP, #640 JETS, 0#56, U-29	JD3229
2A	56	JET, BURNER, GAS. NATURAL, BRASS, #52, .064	JD3082
2B	56	JET, BURNER, GAS, LP, BRASS, #56, .047	JD2360
3A	1	PILOT, BURNER, NAT, Q314B1019	JD2359-01
3B	1	PILOT, BURNER, LP, Q314B1019-LP	JD2359-02
4	2	NIPPLE, STEEL, SCH 40, 3/4NPT X 5 LONG	JD1219
5	1	ELBOW, FEMALE, MI, 1-1/4 NPT X 3/4 NPT	JD 993
6	1	NIPPLE, STEEL , SCH 40, 1-1/4 NPT X 5-1/2 LONG	JD3074
7	1	TEE, FEMALE, MI, 150#, 1-1/4 X 1-1/4 X 3/4	JD1274
8	1	NIPPLE, STEEL, SCH 40, 1-1/4 NPT X 10-1/2 LONG	JD7887
9	2	ELBOW, STREET, MI, 150#, 1-1/4 NPT	JD1013
10	1	UNION, FEMALE, MI, 150#, BRZ-IR SEAT, 1-1/4	JD1294
11	1	SENSOR, IGNITOR, W/MT-BRKT&HDWARE, 60"LEAD	JP7694-D

FIGURE 1-2 (Burner, Gas, Natural JD7895, & LP JD7884, Hpw2560, Assy)



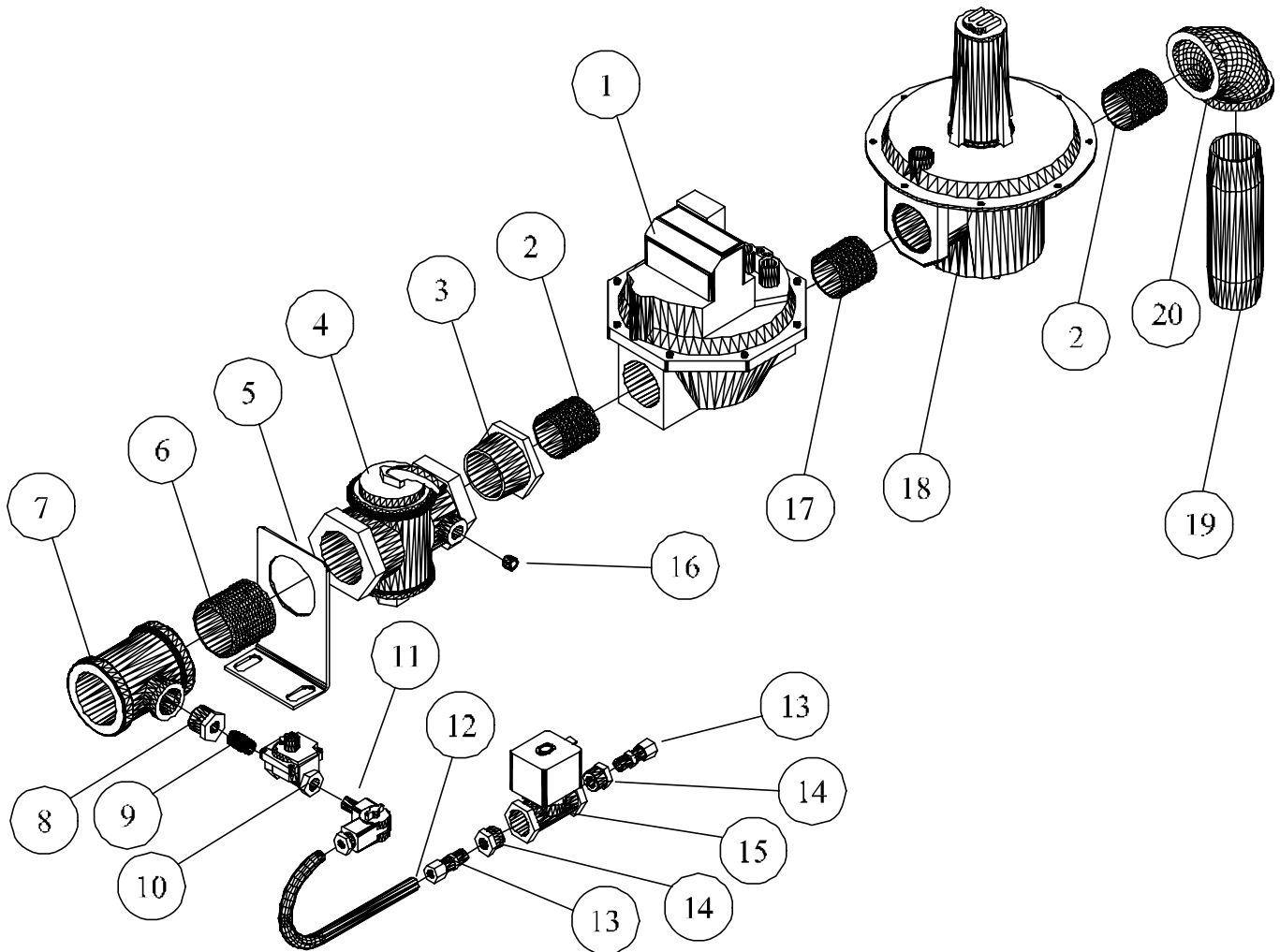
ITEM NO.	QTY.	DESCRIPTION	PART NO.
1	1	VALVE, RELIEF, 2400-3000PSI, 160F, 3/8 NPTM	JD7048-A
2	1	MANIFOLD, FITTINGS, STEEL, PLATED, ALL UNITS	JP7716
3	2	NIPPLE, HEX, STEEL, PLATED, 3/8NPT X 3/8NPT	JD3716-01
4	1	ACCUMULATOR, BLADDER, 3000#WP, 1500#CHARGER	JD7646-J
5	1	VALVE, UNLOAD, PSI, ACT, 3200 PSI, 8.0 GPM, GEN	JD3324-O
6	1	TEE, FEMALE, STEEL, PLATED, 3/8NPT	JD3971
7	1	SWITCH, PSI, SP, ST, NO, 15A, 230V, 3/8 NPT	JD3977
8	1	BARB, HOSE, MALE, BRASS, 5/8HSX3/8NPT	JD 975-01
9	1	PLUG, HEAD, SQUARE, BRASS, 1/4 NPT	JD 679-02
10	1	ELBOW, STREET, BRASS, 3/8NPTX3/8NPT	JD3117

FIGURE 1-3 (Manifold, Valve, Fitting, JD8215, Hpw2560 GES, Assy)



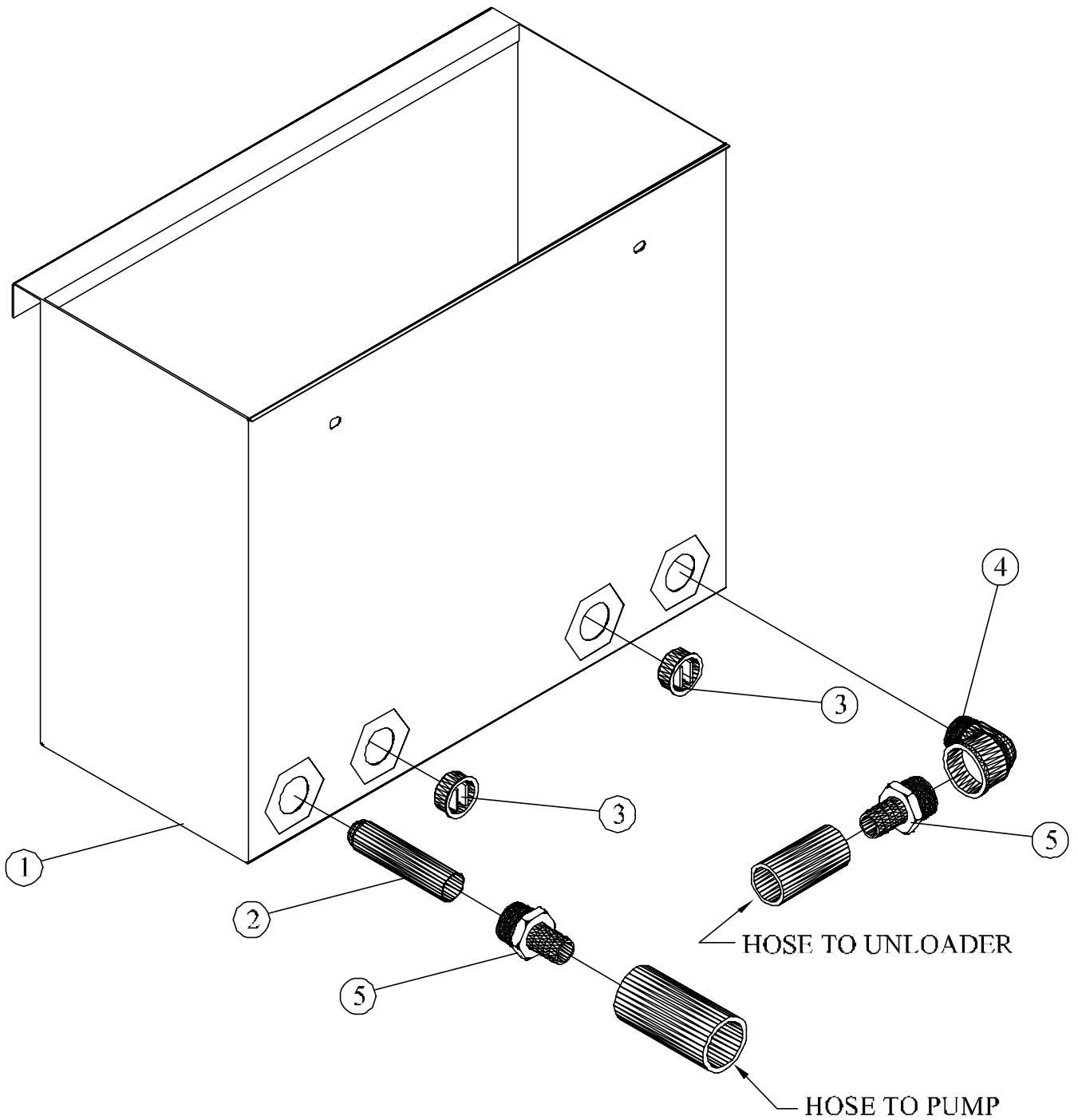
ITEM NO.	QTY.	DESCRIPTION	PART NO.
1	1	VALVE, SOLENOID, NAT, 24VAC, 1-1/4"	JD3845-K
2	1	NIPPLE, CLOSE, STEEL, SCH40, 1-1/4" NPT	JE 886
3	1	BUSHING, REDUCER, HEX, MI, 1-1/2" X 1-1/4"	JD3075
4	1	COCK, VALVE, GAS, WITH HANDLE, 1-1/2" NPT	JP1496-A
5	1	BRACKET, MANIFOLD, GES, 4800	JD8525
6	1	NIPPLE, CLOSE, STEEL, SCH 40, 1-1/2"NPT	JD1243
7	1	TEE, FEMALE, MI, 150 π , 1-1/2" X 1-1/2" X 1/2	JD3076
8	1	BUSHING, REDUCER, HEX, BRASS, 1/2 X 1/8	JD6243
9	1	NIPPLE, CLOSE, STEEL, SCH 80, 1/8" NPT	JD2167
10	1	REGULATOR, GAS, PILOT, NAT, 3-6", RV10, 1/8"	JD6008
11	1	VALVE, PILOT, SHUTOFF, BRASS, 1/8 NPT M X 1/4 TUBE	JP2510-05
12	1	TUBING, ALUMINUM, 1/4 O.D. X .032 WALL	JD1820
13	2	CONNECTOR, MALE, COMPRESSION, BRASS, 1/4TBX1/8	JD3780-A
14	2	BUSHING, REDUCER, HEX, BRASS, 3/8 X 1/8	JD3092
15	1	VALVE, SOLENOID, GAS, 24V, 3/8 NPT	JP3731-B
16	1	PLUG, SOCKET, HEX, BRASS, 1/8 NPT	JD7243
17	1	NIPPLE, STEEL, SCH 40, 1/1/4 NPT X 9 LONG	JD3466
18	1	ELBOW, FEMALE, MI, 150#, 1-1/4 X 1-1/4	JE 888
19	1	NIPPLE, STEEL, SCH 40, 1-1/4 NPT X 5-1/2 LONG	JD3074

FIGURE 1-4A (Burner, Control, Nat. Gas Inlet, JD7881, HPW2560, Assy)



ITEM NO.	QTY.	DESCRIPTION	PART NO.
1	1	VALVE, SOLENOID, LP, 24VAC, 1-1/4"	JE 919-A
2	2	NIPPLE, CLOSE, STEEL, SCH40, 1-1/4" NPT	JE 886
3	1	BUSHING, REDUCER, HEX, MI, 1-1/2" X 1-1/4"	JD3075
4	1	COCK, VALVE, GAS, WITH HANDLE, 1-1/2" NPT	JP1496-A
5	1	BRACKET, MANIFOLD, HPW 1510	JD8525
6	1	NIPPLE, CLOSE, STEEL, SCH 40, 1-1/2"NPT	JD1243
7	1	TEE, FEMALE, MI, 150#, 1-1/2" X 1-1/2" X 1/2	JD3076
8	1	BUSHING, REDUCER, HEX, BRASS, 1/2 X 1/8	JD6243
9	1	NIPPLE, CLOSE, STEEL, SCH 80, 1/8" NPT	JD2167
10	1	REGULATOR, GAS, PILOT,LP,5.5-12",RV10,1/8"	JD6008-A
11	1	VALVE, PILOT, SHUTOFF, BRASS, 1/8 NPT M X1/4 TUBE	JP2510-05
12	1	TUBING, ALUMINUM, 1/4 O.D. X .032 WALL	JD1820
13	2	CONNECTOR, MALE, COMPRESSION, BRASS, 1/4TBX1/8	JD3780-A
14	2	BUSHING, REDUCER, HEX, BRASS. 3/8 X 1/8	JD3092
15	1	VALVE, SOLENOID, GAS, 24V, 3/8 NPT	JP3731-B
16	1	PLUG, SOCKET, HEX, BRASS, 1/8 NPT	JD7243
17	1	NIPPLE, STEEL, SCH 40, 1/1/4 NPT X 2" LONG	JD1414
18	1	REGULATOR,GAS,PSI,LP,5"-12"WC,1-1/4 NPTF	JD3077-A
19	1	NIPPLE, STEEL, SCH 40, 1-1/4 NPT X 5-1/2 LONG	JD3074
20	1	ELBOW,FEMALE,MI,150#,1-1/4 X 1-1/4	JE 888

FIGURE 1-4B (Burner, Control, LP, Inlet, Fitting, JD7886, Hpw2560, Assy)



ITEM NO.	QTY.	DESCRIPTION	PART NO.
1	1	TANK, FLOAT, SS,LARGE,BOLT-ON, GES	JD8524
2	1	STRAINER,WATER,SS,30 MESH,25/32 O.D.X3-1/8 LG	JD3843
3	2	PLUG,TRISURE,STAINLESS,STL,3/4	JD1339-01
4	1	ELBOW, STREET, BRASS, 3/4" NPT	JD7988
5	2	SPUD, HOSE, BRASS, 5/8 X 3/4 NPT	JP6595

FIGURE 1-5 (Float, Tank, Fitting, JD8524, HPW2560 Ass'y)

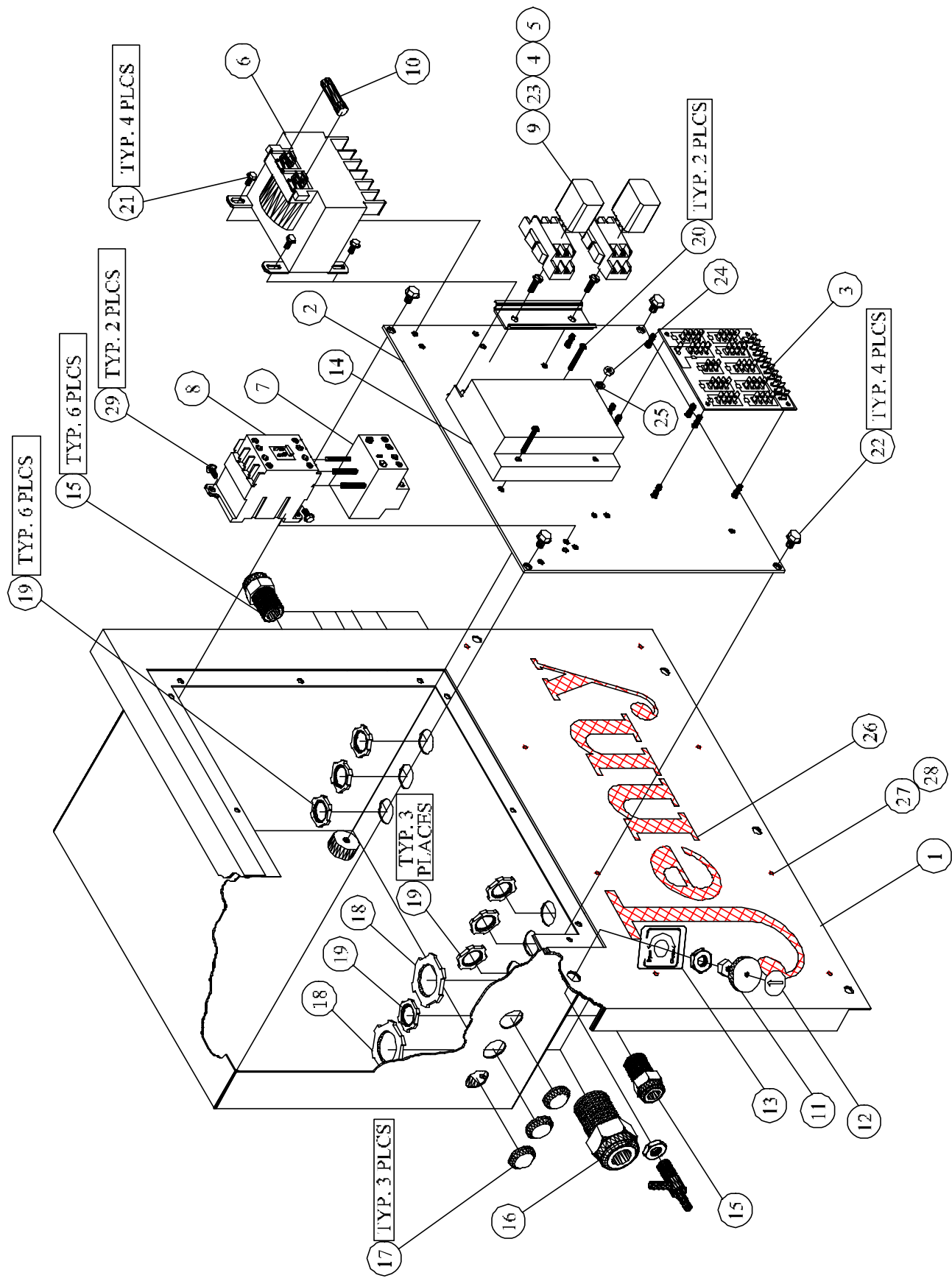
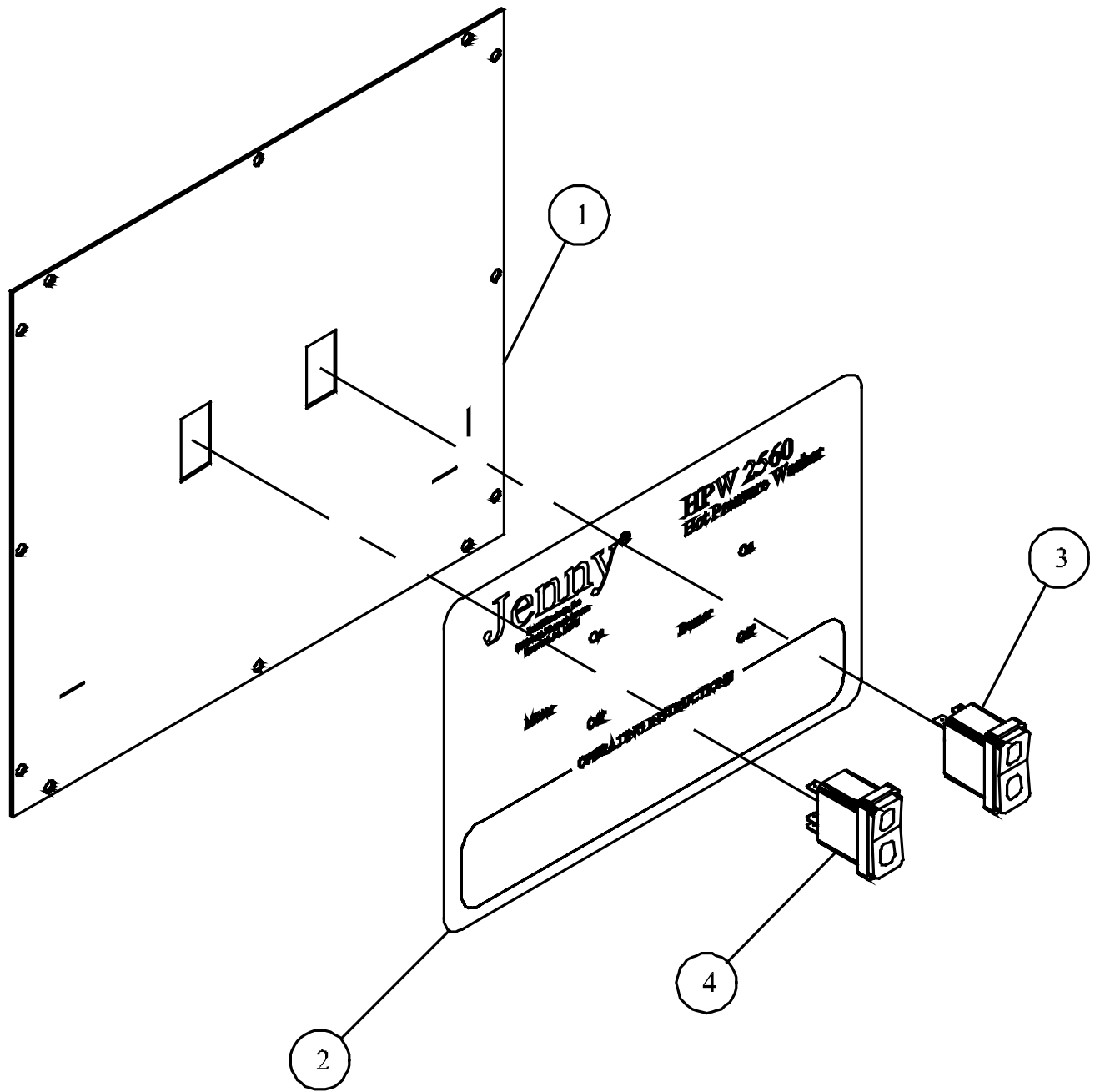


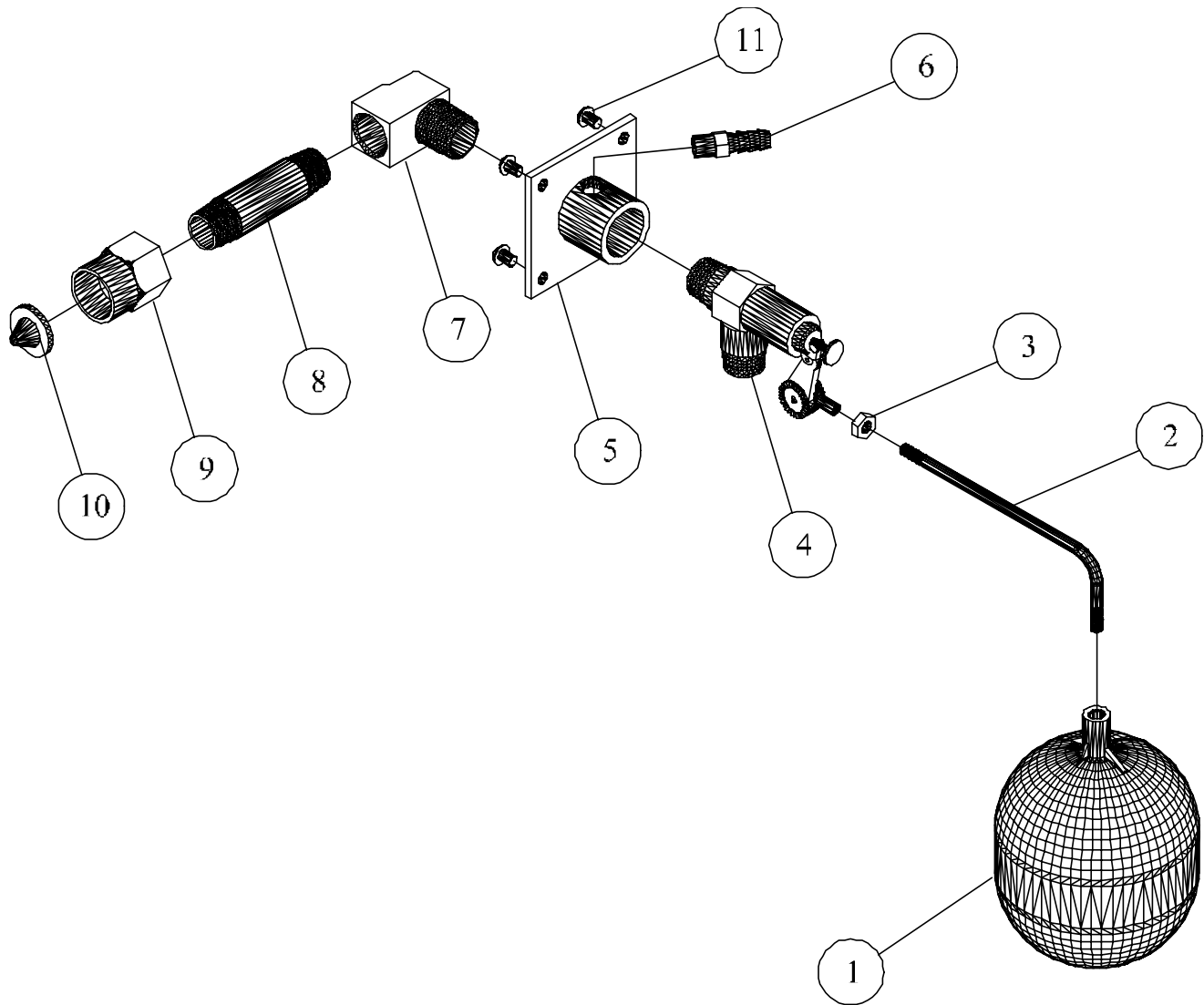
FIGURE 1-6 (BOX, JUNCTION, PANEL, FRONT, 208-230-460-575/60/3PH, 12-37A, GES, HPW2560, ASSY, JE2013)

ITEM NO.	DESCRIPTION	QTY.	PART NO.
1	PANEL,CONTROL,BOX,JUNCTION,STL,PNTD,GES	1	JD8511
2	PLATE,MOUNTING,PANEL,CONT,BOX,JCT,ST,GES	1	JD8512
3	BOARD,CIRCUIT,PRINTED,ALL MACHINES	1	JB5000
4	BASE,RELAY,DP	2	JD7819-A
5	RELAY,DP,DT,24VAC	2	JD7819
6-A	TRNSFRMR,CTRL,OPN,100VA,120-460VP,24VS	1	JD2868
6-B	TRNSFRMR,CTRL,OPN,100VA,600VP,24VS	1	JD3987-13
7-A	RELAY,OVERLOAD,SOLID STATE, PLUG-IN,12-37 AMPS (BEFORE 5-1-01)	1	JD7651-20
7-B	RELAY,OVERLOAD,THERMAL,PLUG-IN,10-14 AMPS (BEFORE 5-1-01)	1	JD7651-12
7-C	RELAY,OVERLOAD,THERMAL,PLUG-IN,18-30A (AFTER 5-1-01)	1	JD7651-36
7-D	RELAY,OVERLOAD,THERMAL,PLUG-IN,10-16A (AFTER 5-1-01)	1	JD7651-34
8-A	STARTER,DP,OP,3P,50A,24V,CA7- SERIES,SS (BEFORE 5-1-01)	1	JD7651-R
8-B	CONTACTOR,DP,OP,3P,30A,24V,W/AUX,CONTACT (BEFORE 5-1-01)	1	JD7651-B
8-C	STARTER,DP,OP,3P,50A,24V,CA7-SERIES (AFTER 5-1-01)	1	JD7651-V
9	RAIL,DIN,STL,PLTD, TAIL,DOVE,1 3/8X5/16	0.16	JD7768-A
10	FUSE,ELEMENT,DUAL,DELAY,TIME,250V,6AMP	1	
11	VALVE,NEEDLE,SOLUTION,BRASS,1/4IDHS-BARB	1	JD6248-A
12	DECAL,INDICATOR,HANDLE,VALVE,SOLUTION	1	JD7143
13	DECAL,SOLUTION,METERING,VALVE	1	JD7821
14	CONTROL,IGNITION,UNIT,LOCKOUT,SP745	1	JP7694-A
15	CONNECTOR,RELIEF,STRAIN,1/4-3/8,1/2 NPTM	6	JD1687-06
16	CONNECTOR,RELIEF,STRAIN,.750-.900,1NPTM	2	JD1687-19
17	PLUG,HOLE,PLASTIC,BLACK,7/8"	3	JD3856
18	NUT,LOCK,CONDUIT,STEEL,PLATED,1"	2	JD3739
19	NUT,LOCK,CONDUIT,STEEL,PLATED,1/2"	6	JP 809
20	SCREW,MACHINE,PHILLIP	2	JD838
21	SCREW,FLANGE,HEX,SERR,ST,PL,8-32x3/8	6	JD7901-B
22	SCREW,FLANGE,HEX,SERR,ST,PL,1/4-20X3/8	4	JD7904
23	SCREW,SLF DRL,HEX WASHER,PLTD,#10x5/8	2	JD7074-A
24	NUT,HEX,STEEL,PLATED,10-32	1	JD 781
25	WASHER,LOCK,SPLIT,STEEL,PLATED,#10	1	JD 624
26	SCREEN,COVER,MACHINE,ST,PAINTED	1	JP7720-01
27	RIVET,AL,.160-.164 HOLE,.063-.125 GRP,5/32	8	JP7720-02
28	WASHER,FLAT,SS,3/4 O.D.X 5/32 I.D. X 20 GAUGE	8	JP7720-03
29	SCREW,FLANGE,HEX,SERR,ST,8-32 X 5/8	2	JD7901-D



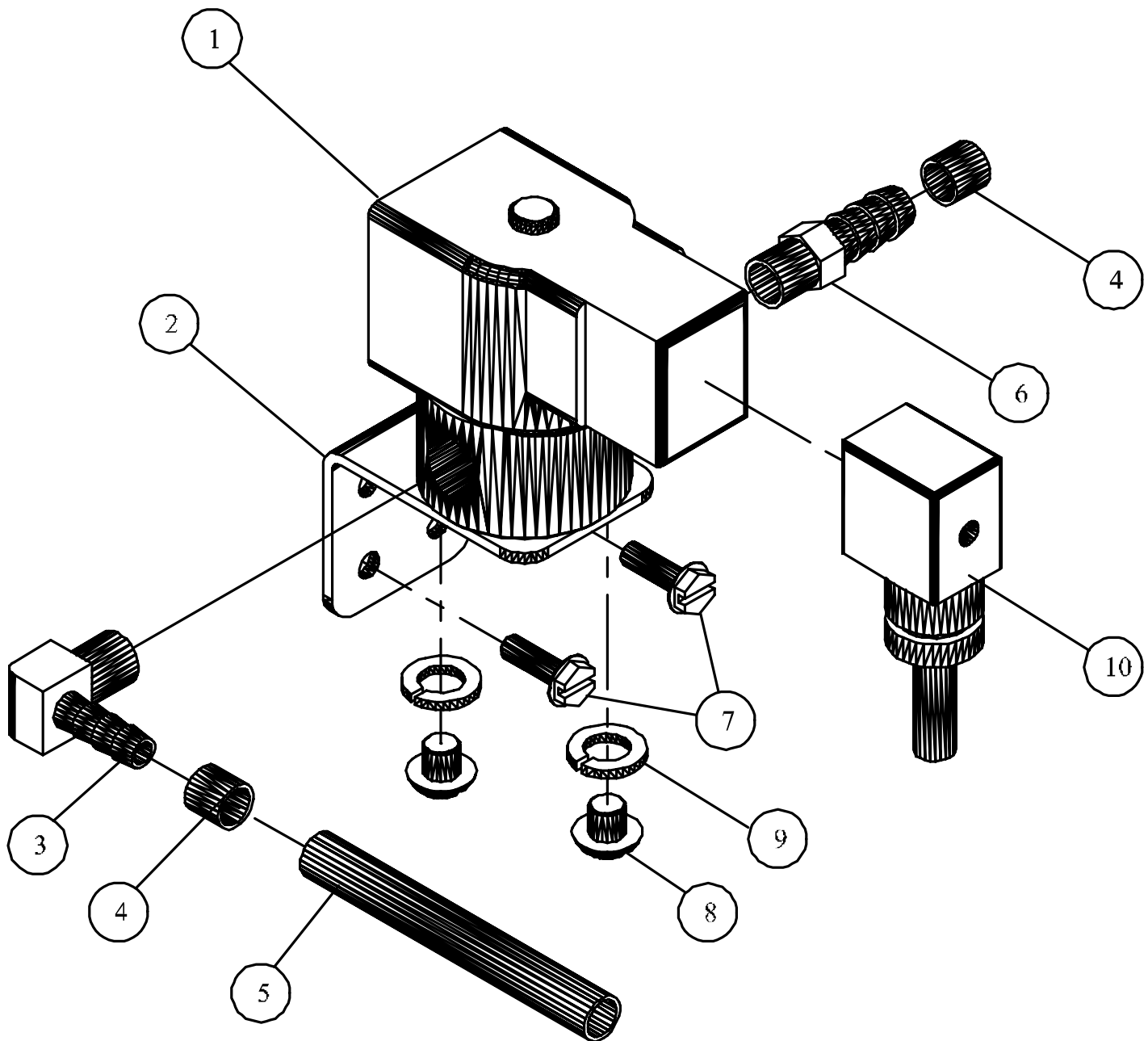
ITEM NO.	QTY.	DESCRIPTION	PART NO.
1	1	PLATE, COVER, PANEL, CONT, BOX, JUNC., HPW, GES	JD8513
2	1	DECAL, PANEL, INSTRUCTION, HPW2560, GES	JD8412
3	1	SWITCH, ROCKER, SP, ST, 10A, 24V, LED, LIGHT	JE1004
4	1	SWITCH, ROCKER, DP, DT, OFF-ON-MOM-10A, 24V	JE1006

FIGURE 1-7 (Panel, Instruction, Fitting, JD8513, Hpw2560, Assy)



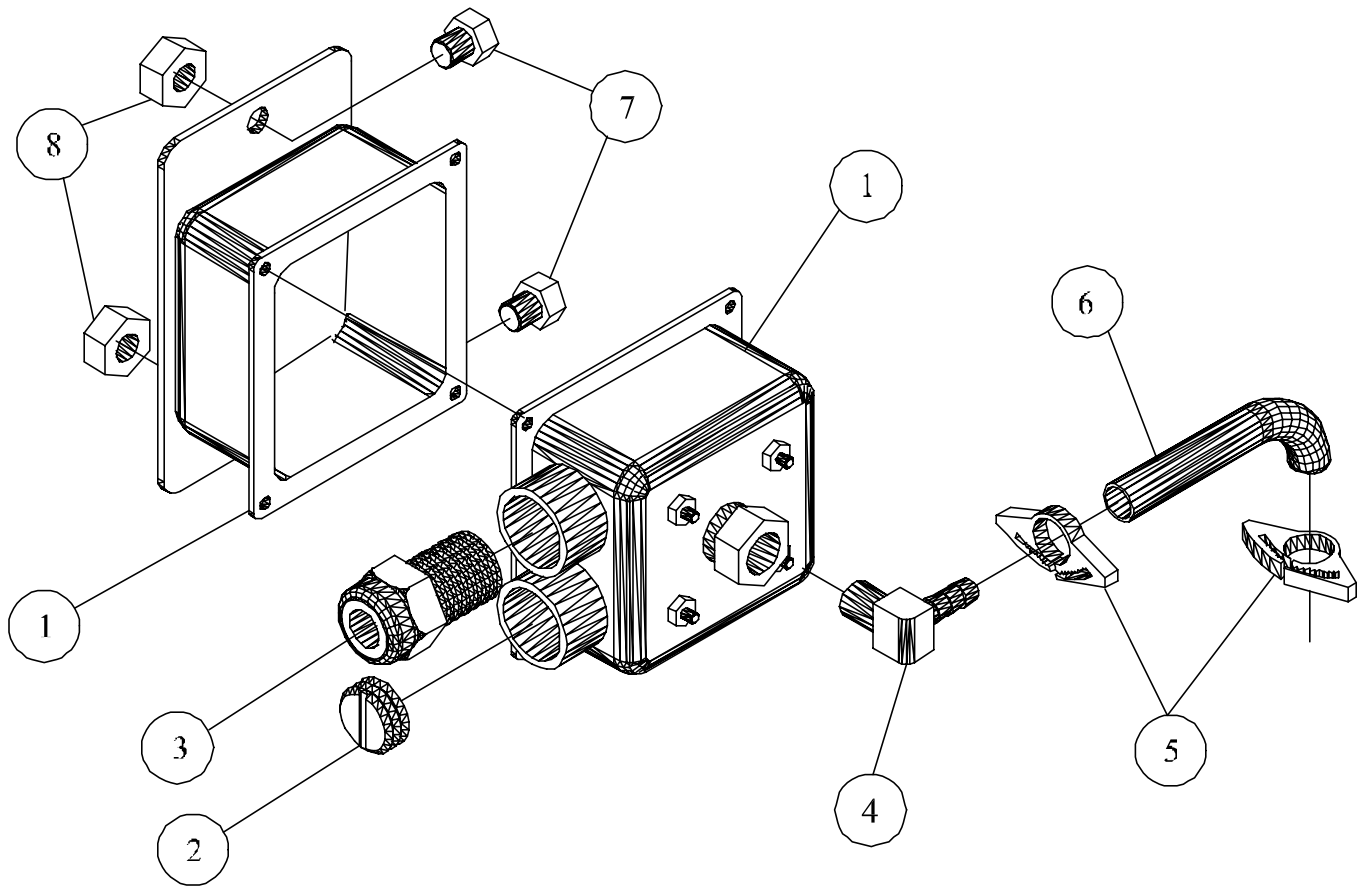
ITEM NO.	QTY.	DESCRIPTION	PART NO.
1	1	PLASTIC, FLOAT, PLASTIC, BLACK	JD1416-01
2	1	ROD, FLOAT, BENT, BRASS, 1/4 X 5-5/8LONG	JD1416-02
3	1	NUT, HEX, STEEL, PLATED, 1/4-20	JD 791
4	1	VALVE, FLOAT, BRASS, 60PSI, 1/2" NPTM	JD2988-B
5	1	ADAPTER, INLET, WATER, SS, 1/2, GES	JD8517
6	1	BARB, HOSE, MALE, BRASS, 1/4HS X 1/8NPT	JD6132
7	1	ELBOW, STREET, BRASS, FORGED, 1/2NPT	JD 800-01
8	1	NIPPLE, BRASS, 1/2NPTX3LONG	JD3094-02
9	1	CONNECTOR, BRASS, 3/4 GARDEN, HOSE, 1/2 NPTF	JD7142-C
10	1	WASHER, STRAINER, MESH, WIRE, BRASS, #30	JD 809
11	4	SCREW, SELF, DRL, HEX, WASHER, PLTD, 10-32 X 1/2	JD6219

FIGURE 1-8 (Valve, Float, Fitting, JD8524, Hpw2560, Ass'y)



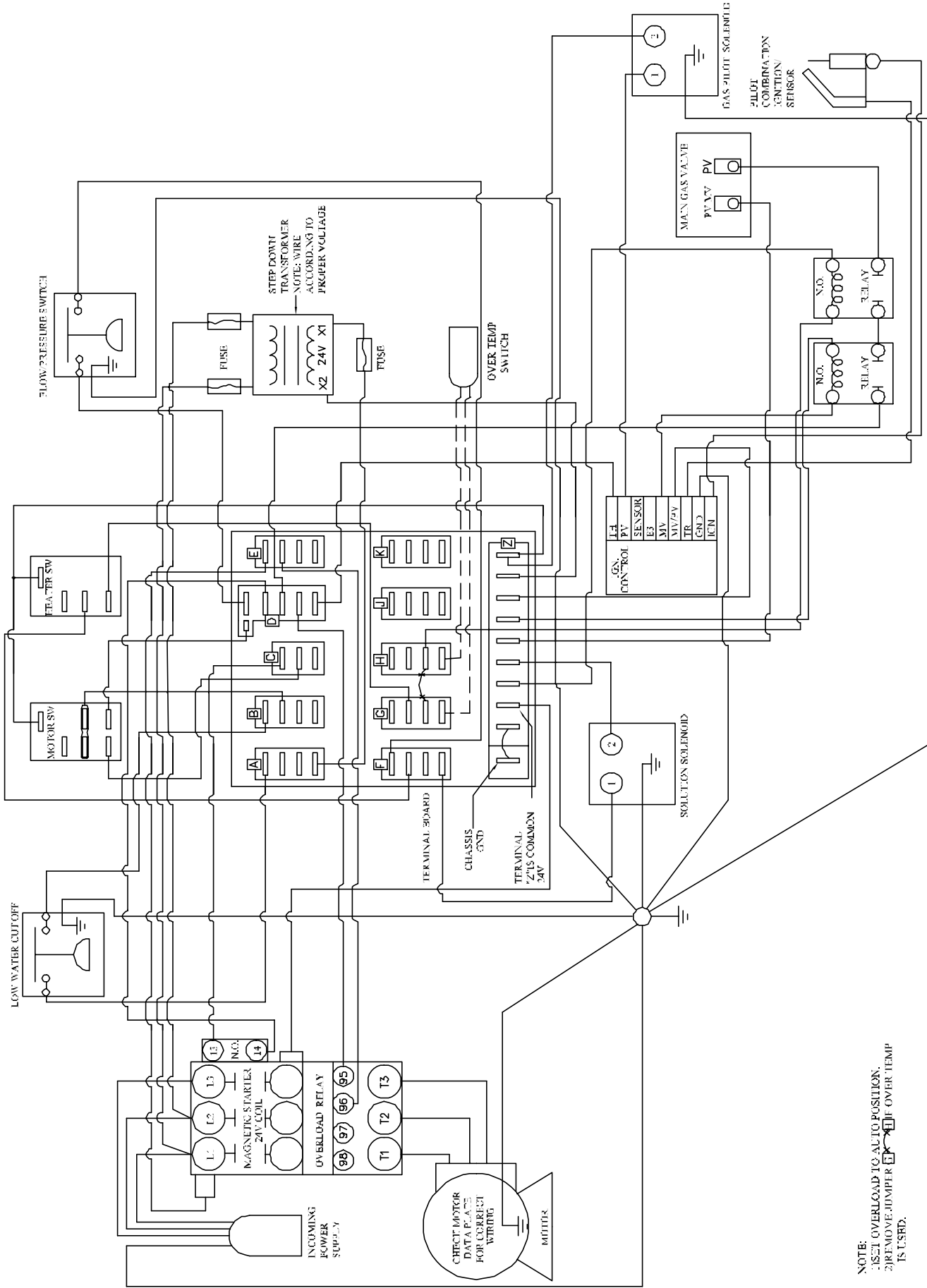
ITEM NO.	QTY.	DESCRIPTION	PART NO.
1	1	VALVE, SOLENOID, SOLUTION, 24V, 1/4NPT	JD2162-F
2	1	BRACKET, MOUNTING, SOLUTION, SOLENOID	JD7760
3	1	BARB, HOSE, ELBOW, MALE, BRASS, 1/4HS X 1/4 NPT	JD7078
4	2	CLAMP, SLEEVE, PLASTIC, 3/8 I.D.	JD2759
5	1	TUBING, PVC, CLEAR, 3/8 O.D. X 1/4 I.D.	JD3087
6	1	BARB HOSE 1/4 HS X 1/4 NPT	JD2765
7	2	SCREW, SLF, DRL, HEX WASHER, PLTD, #10 X 5/8	JD7074-A
8	2	SCREW, MACHINE, PHILLIPS, ST, PL, 10-32 X 3/8	JD3234
9	2	WASHER, LOCK, SPLIT, STEEL, PLATED, #10	JD624
10	1	CONNECTOR, SOLENOID, RELIEF, STRAIN, DIN	JD7703

FIGURE 20-1 (VALVE, SOLUTION, SOLENOID, JD2162-F, ASSY)



ITEM NO.	QTY.	DESCRIPTION	PART NO.
1	1	SWITCH, PRESSURE, W/BRACKET, WELDED ASSY	JP7731
2	1	PLUG, HOLE, BOX, JUNCTION, 1/2 NPS	JD7719
3	1	CONNECTOR, RELIEF, STRAIN, 1/4-3/8, 1/2NPM	JD1687-06
4	1	BARB, HOSE, ELBOW, MALE, BRASS, 1/4HS X 1/4NPT	JD7078
5	2	CLAMP, HOSE, NYLON, BLACK, .406/.468 DIA	JD-7859-A
6	1	TUBING, PVC, REINFORCED, 1/4ID	JD7850
7	2	SCREW, FLANGE, HEX, SERR,ST, PL, 1/4-20 X 1/2	JD7904-A
8	2	NUT, LOCK, FLANGE, HEX, SERR, ST, PL, 1/4-20	JD7774-D

FIGURE 20-2 (SWITCH, PRESSURE, W/BRACKET, WELDED, JD7731, ASS'Y)



NOTE:
 1) SET OVERLOAD TO AL TO POSITION.
 2) REMOVE JUMPER IF OVER TEMP IS USED.

File Name: Jw 306 Gas, Fired, SJ, Hot Pressure Washer, W/Mom & Dual-Relay, 3 Ph.
 (Electrical Schematic Diagram)