

ACCESSORIES

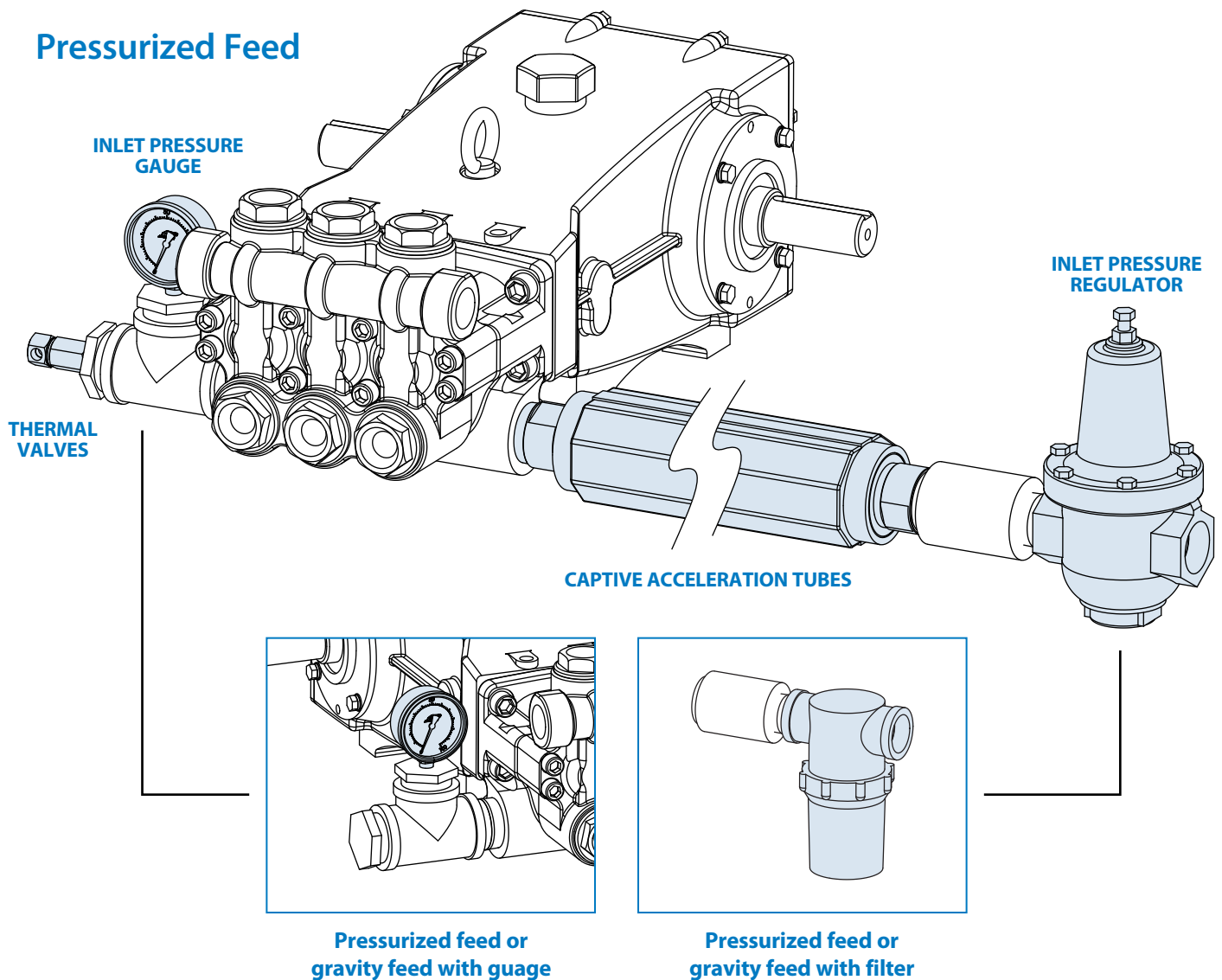
Pump Inlet Controls



Cat Pumps offers a wide range of quality accessories. Adhering to the same exacting standards as our pumps, all accessories are performance-tested and designed to match each pump's unique specifications. By demanding Cat Pumps products, you receive the best value and lowest life-cost over the life of the system.

To ensure the very best system life-cycle, Cat Pumps offers filters, inlet regulators, thermal valves, Captive Acceleration Tubes (C.A.T.) and pressure gauges to meet either your pressurized feed or gravity feed system. Cat Pumps recommends the pressurized feed system using the products as shown below. With a gravity feed system, use gauge and filter only with filter installed prior to tank.

Pressurized Feed



Be the best-in class and realize low life cycle costs —
Choose pumps and accessories from Cat Pumps!

Filters

Used to filter standard water particles and debris.

- Flow from inside to outside allowing sediment to collect inside the removable filter screen.
- Removable bowl permits easy cleaning without removing filter or plumbing.

Model	SUCTION/ PRESSURIZED FLOW		MESH		PORTS	
	gpm	lpm	Micron	Material	Inlet	Discharge

WHITE NYLON BODY

7104	6/10	23/38	80	S	1/2"NPTF	1/2"NPTF
7105	15/20	57/76	80	S	3/4"NPTF	3/4"NPTF
7106	20/25	76/95	80	S	1"NPTF	1"NPTF
7107	35/50	133/189	80	S	1-1/4"NPTF	1-1/4"NPTF
7108	60/75	227/284	80	S	1-1/2"NPTF	1-1/2"NPTF

CLEAR NYLON BODY

7104.4	6/10	23/38	80	S	1/2"NPTF	1/2"NPTF
7105.5	15/20	57/76	80	S	3/4"NPTF	3/4"NPTF
7106.6	20/25	76/95	80	S	1"NPTF	1"NPTF
7107.7	35/50	133/189	80	S	1-1/4"NPTF	1-1/4"NPTF
7108.8	60/75	227/284	80	S	1-1/2"NPTF	1-1/2"NPTF

POLYPROPYLENE BODY (Y-INLINE)

7109	100/150	378/567	80	SS	2"NPTF	2"NPTF
------	---------	---------	----	----	--------	--------

WHITE NYLON BODY (MICRO)

7203	10 gpm max	38	80	S	1/2"NPTM	1/2"NPTM
7204	10 gpm max	38	80	S	1/2"NPTF	1/2"NPTF

CLEAR NYLON BODY (MICRO)

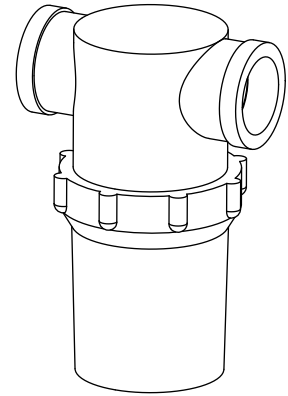
7203.3	10 gpm max	38	80	S	1/2"NPTM	1/2"NPTM
7204.4	10 gpm max	38	80	S	1/2"NPTF	1/2"NPTF

REINFORCED COMPOSITE BODY W/BRASS THREADED PORTS, 1/4" BSPF AUXILIARY PORT

32738	8 gpm max	30	50	SS	1/2"BSPF	1/2"BSPM
32748	8 gpm max	30	50	SS	1/2"BSPF	1/2"BSPF

S = 304 Stainless steel, SS = 316 Stainless steel

Optional Mesh sizes available



Model 7107 Shown

Inlet Pressure Regulators

Prevents over pressure or pressure spikes at the pump inlet.

- Convenient, compact inline installation.
- Adjustable and non-adjustable models available.
- Handles inlet pressure up to 75 psi.

Model	MAXIMUM FLOW		PRESSURE RANGE		PORTS	
	gpm	lpm	psi	bar	Inlet/Discharge	With Adapter

BRASS - NONADJUSTABLE

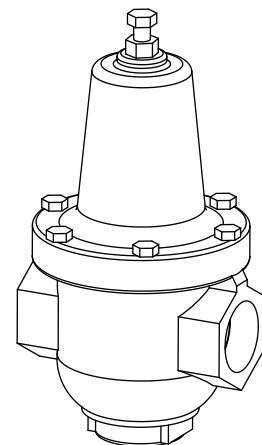
7069	10.0	38	30-45	2.1-3.1	3/4"FGH/3/4"MGH	NA
7071	10.0	38	30-45	2.1-3.1	3/4"FGH/3/4"MGH	1/2"NPTF

FGH = Female Garden Hose, MGH = Male Garden Hose

Model	FLOW RANGE		PRESSURE RANGE		PORTS Inlet/Discharge
	gpm	lpm	psi	bar	

NICKEL ALUMINUM BRONZE - ADJUSTABLE

7075	15-70	57-265	40-300	2.8-21.0	1-1/4"NPTF/1-1/4"NPTF
------	-------	--------	--------	----------	-----------------------



Model 7075 Shown

Inlet Pressure Gauges

Accurately monitors pump inlet pressure

- Glycerine filled for consistent and accurate pressure readings.
- Sealed stainless steel case eliminates corrosion risk.

Model	PRESSURE RANGE		PORTS Inlet
	psi	bar	

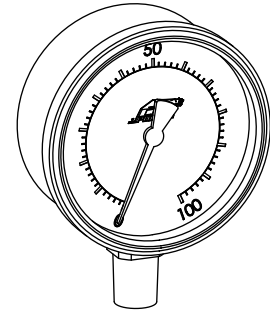
BRASS MODELS (BRASS FITTING AND BOURDON TUBE, 304 SS CASE)

6082	100	7	1/4" NPTM Bottom
997901	400	28	1/4" NPTM Bottom

STAINLESS STEEL MODELS (316 SS FITTING AND BOURDON TUBE, 304 SS CASE)

997068	160	11	1/4" NPTM Bottom
997336	160	11	1/4" NPTM Panel Mount

Note: Maximum inlet pressure is 70 psi on most pumps. Review pump data sheet



Model 6082 Shown

Thermal Valves

Eliminates heat build-up in a closed loop by-pass system.

- Ultra lightweight with three port sizes options for easy installation.
- Protects pump seals, packings and cups from premature failure.

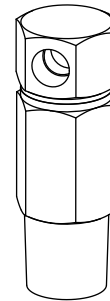
Model	MAXIMUM FLOW		MAXIMUM PRESSURE		TEMPERATURE MAX (°F)	PORTS	
	gpm	lpm	psi	bar		Inlet	Bleed

BRASS MODELS

7140	25	95	125	8.6	145	1/4"NPTM	1/8"NPTF
7141	25	95	125	8.6	145	3/8"NPTM	1/8"NPTF
7142	25	95	125	8.6	145	1/2"NPTM	1/8"NPTF
7143	25	95	125	8.6	165	1/4"NPTM	1/8"NPTF
7144	25	95	125	8.6	165	3/8"NPTM	1/8"NPTF
7145	25	95	125	8.6	165	1/2"NPTM	1/8"NPTF
7146	25	95	125	8.6	130	1/4"NPTM	1/8"NPTF
7170	25	95	125	8.6	180	1/4"NPTM	1/8"NPTF
7171	25	95	125	8.6	180	3/8"NPTM	1/8"NPTF
7172	25	95	125	8.6	180	1/2"NPTM	1/8"NPTF
7175	25	95	125	8.6	190	1/4"NPTM	1/8"NPTF
7176	25	95	125	8.6	190	3/8"NPTM	1/8"NPTF
7177	25	95	125	8.6	190	1/2"NPTM	1/8"NPTF

REINFORCED COMPOSITE MODELS

7128	25	95	125	8.6	165	1/4"NPTM	1/8"NPTF
7129	25	95	125	8.6	165	3/8"NPTM	1/8"NPTF
7130	25	95	125	8.6	165	1/2"NPTM	1/8"NPTF
7135	25	95	125	8.6	145	1/4"NPTM	1/8"NPTF
7136	25	95	125	8.6	145	3/8"NPTM	1/8"NPTF
7137	25	95	125	8.6	145	1/2"NPTM	1/8"NPTF
7138	25	95	125	8.6	130	1/4"NPTM	1/8"NPTF

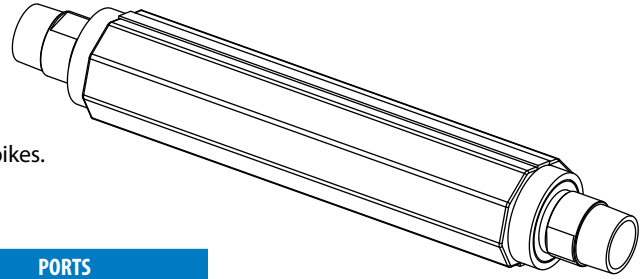


Model 7142 Shown

Captive Acceleration Tubes

Used to maintain consistent inlet pressure when there is high temperatures, booster pump feed and long inlet lines.

- Eliminates cavitation and potentially damaging surges and hydraulic spikes.
- Compact, easy installation with matching adapter assemblies.
- Does not protect against starvation.



Model	MAXIMUM FLOW		INLET PRESSURE RANGE		PORTS
	gpm	lpm	psi	bar	Adapter sizes available

STAINLESS STEEL

711500	15	57	2.0-50	0.1-3.5	1/2", 3/4", 1", 1-1/4", 1-1/2"
714500	45	170	2.0-50	0.1-3.5	1", 1-1/4", 1-1/2", 2", 2-1/2"
717500	75	284	2.0-50	0.1-3.5	2", 2-1/2", 3"
719500	320	1211	2.0-60	0.1-4.1	6" X ANSI 150, 6" elbow

Model 714500 Shown
w/ 714506 Straight Adapters

Fitting Size	CAPTIVE ACCELERATION TUBES		
	711500	714500	717500

STRAIGHT ADAPTER FITTINGS

1/2"NPTM	711502		
3/4"NPTM	711503		
1"NPTM	711504	714504	
1 1/4"NPTM	711505	714505	
1 1/2"NPTM	711506	714506	
2"NPTM		714508	717508
2 1/2"NPTM			717510

ELBOW ADAPTER FITTINGS

1 1/2"	701818		
2 1/2"		701828	
3"			701833

Total Life Cycle Cost:

More and more users of pumping systems are making purchase decisions based on a systems Total Life Cycle Cost and not based on the systems initial cost. Pump, installation, energy use, downtime, operating expense and maintenance are all factors considered to determine a systems overall life cycle cost. The objective of life cycle costing is to evaluate and optimize product life costs yet satisfying the performance, safety, reliability, and maintainability of the system.

Cat Pumps is keenly aware of minimizing life cycle costs in both its pump and accessory component designs. A pumping systems ongoing performance is as good as its weakest component, that's why we rigorously test and evaluate our accessory components. Our mission is to provide the best system value by providing pumps and accessories that exceed your performance and reliability expectations so you can realize the lowest possible life cycle cost.



CAT PUMPS

1681 - 94TH LANE N.E. MINNEAPOLIS, MN 55449-4324
PHONE (763) 780-5440 — FAX (763) 780-2958
e-mail: techsupport@catpumps.com
www.catpumps.com