

LEOPARD SERIES

MODEL

620

and Model 621

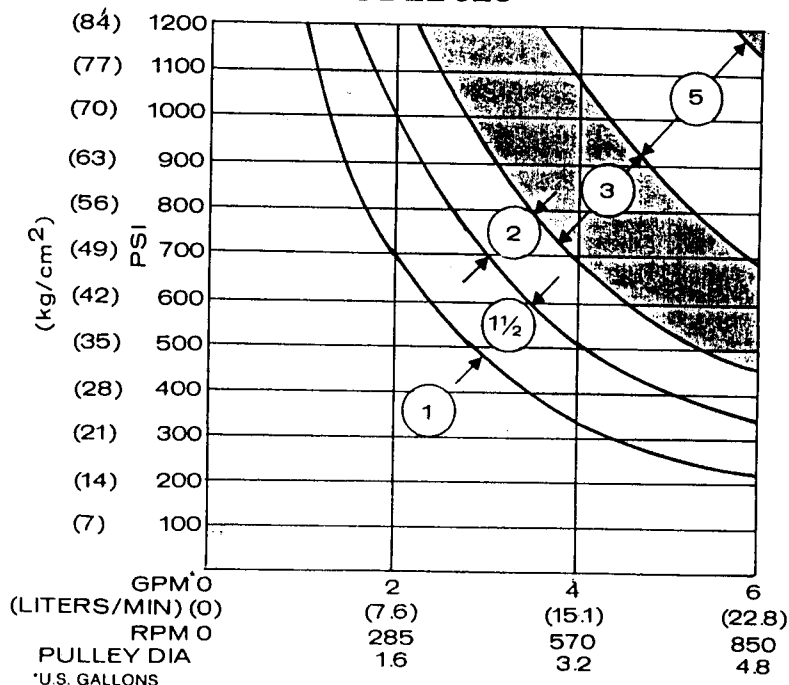
IMPORTANT DRIVE INFORMATION

Pump speed and pump output in gallons per minute as tabulated is based upon a 1725 RPM drive motor. Select motor pulley size to provide GPM of the approximate pump output desired.

Pump RPM and GPM output are approximate values due to variations in pulleys, belts and motors between manufacturers and a $\pm 5\%$ pump output tolerance.

Horsepower figures shown are for electric motor only. For gas engine requirements, follow engine manufacturer's recommendations. In general, use a gas engine with approximately double the electric motor horsepower.

TABLE I
HORSEPOWER CHART
MODEL 620



Servicing discharge valves and valve seats

Remove the discharge manifold as described and pictured on page 6. Remove the discharge valve seats and invert the manifold. The discharge valve seat will have to be pried out.

Inspect the discharge valves for wear or ridges. If damaged, replace them. Check valve seats. If nicked or rough, lap on a fine oilstone until smooth. Check seal by placing the discharge valve tightly over face of the valve seat and blow through the valve. No air will pass through if properly seated.

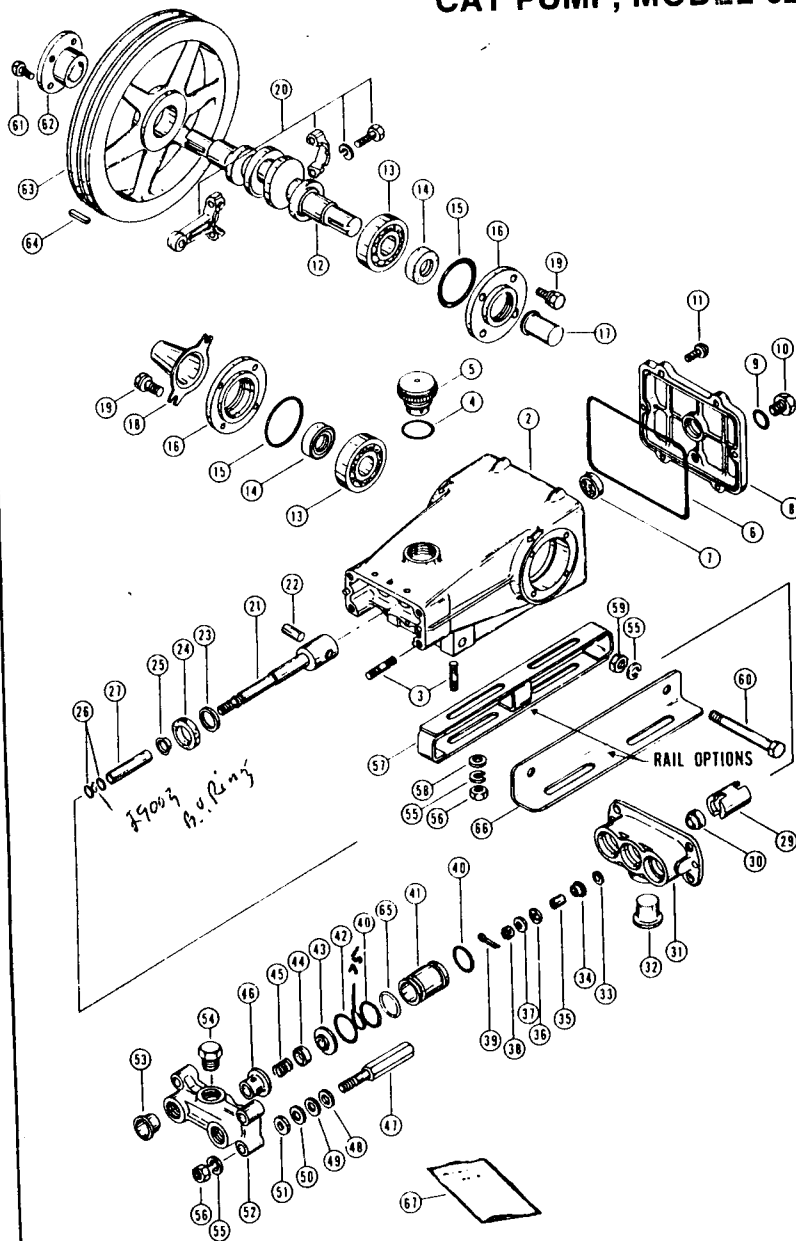
Reassemble valves and valve seats in the manifold — spring retainer first, then the spring and then the valve. The flat side of the discharge valve faces out.

The recessed side of the discharge valve fits over the spring. Insert the discharge valve seats.

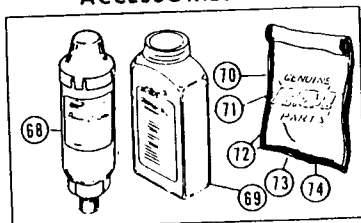
Insert one end of cylinders into the discharge manifold, being careful not to damage cylinder O-rings. Position assembly back on the pump, again being careful not to damage cylinder O-rings when inserting cylinders into the inlet manifold. Replace lockwashers and nuts, torque to 125 inch-pounds.

CAUTION: When restarting the pump, *check carefully to see that there is no cylinder motion* as it will cause premature failure of the O-ring cylinder seals. Cylinder motion, if any, must be eliminated by procedure as detailed on page 6.

PARTS LIST **CAT PUMP, MODEL 620 AND MODEL 621**



ACCESSORIES



ACCESSORIES

68	06001	Prrrrr-O-Lator II	1
69	06101	Cat Pumps Crankcase Oil (Bottle)**	2
69	06100	Cat Pumps Crankcase Oil (Case)	12
70	30219	Piston Assembly Kit	1
71	30220	Short Cup Kit	1
71A*	30294	(Viton) Short Cup Kit	1
72	30225	Discharge Valve Kit	1
73	30305	Seal Replacement Kit	1
74	30397	Sleeve and Seal Replacement Kit	1

** (Min. Order 12 Bottles)

* Optional Parts

ITEM	PART NO.	DESCRIPTION	QTY./ASSY.
2	27325	Crankcase Assembly	1
3	14050	Stud	8
4	14177	O-ring — Cap	1
5	27765	Cap Assembly — Oil Filler	1
6	27418	O-ring — Crankcase Cover	1
7	22289	Oil Gauge	1
8	27328	Rear Cover — Crankcase	1
9	23170	O-ring — Drain	1
10	25625	Drain Plug	1
11	19200	Screw (Sems)	6
12	27329	Crankshaft	1
13	47080	Bearing	2
14	27330	Oil Seal	2
15	26965	O-ring — Oil Seal Case	2
16	27331	Oil Seal Case	2
17	27332	Cap — Crankshaft	2
18	25131*	Protector	1
19	25811	Bolt (Sems)	8
20	27334	Connecting Rod Assembly	3
21	27337	Piston Rod Assembly	3
22	20251	Piston Pin	3
23	26952	Washer	3
24	27339	Oil Seal	3
25	25327	Barrier Slinger	3
26	25392	O-ring — Piston Sleeve	6
26A*	28771	(Viton) O-ring — Piston Sleeve	6
27	27340	Piston Sleeve	3
27A*	28782	Unchrome Sleeve	3
29	27341	Seal Retainer	3
30	30315	Seal (Prrrrr-A-Lube)	3
30B*	30325	(Viton) Seal (Prrrrr-A-Lube) SS	3
31	27344	Inlet Manifold	1
31SS	30247	Inlet Manifold SS	1
32	26558	Cap — Plastic	1
33	27347	Valve, Inlet	3
34	30340+	Hot Cup. Assembly (Machined)	3
35	27348	Spacer — Piston	3
36	27002	Retainer — Piston	3
37	27006	Helical Washer	3
38	27000	Castellated Nut	3
39	14158	Cotter Pin	3
40	26969	O-Ring — Cylinder	6
40A*	28459	(Viton) O-Ring Cylinder	6
41	28342	Cylinder	3
41A*	28776	Unchrome Cylinder	3
42	26966	O-Ring — Discharge Valve Seat	3
42A*	28458	(Viton) O-Ring Discharge Valve Seat	3
43	27350	Discharge Valve Seat 43063	3
44	20262	Discharge Valve	3
45	20265	Valve Spring	3
46	20264	Retainer — Valve Spring	3
47	28343	Cylinder Bolt	4
48	26949	Washer	4/8
49	26950	Washer	4/8
50	26951	Washer	4/8
51	27357	Toothed Lock Washer 43046	4
52	27352	Discharge Manifold	1
52SS	30248	Discharge Manifold SS	1
53	27353	Cap — Plastic	2
54	20326	Plug	1
55	12503	Spring Washer	8
56	81118	Nut	8
57*	20317	Box Rail	2
58*	12490	Washer	4
59*	81048	Nut	2
60*	80416	Bolt	2
61*	—	Screw (Included with 30208)	2
62*	30234	Hub — Pulley	1
63*	30206	Pulley	1
64*	50146	Key — Pulley	1
65	28204	Back Up Ring	3
66*	28498	Angle Rail	2
67	30231	Operating Instructions	1