

# Axial Radial Drive Pumps

## FEATURING

**MANIFOLD: Forged Brass:** Strength and no porosity - long life. Higher hydrostatic pressures - safety.

**BOLTS:** Three 6mm cadmium plated steel

**UNLOADER:** Integral trap pressure, fixed chemical injector. Simple repair using a cartridge replacement kit.

**CRANKCASE:** Precision die-cast, with cooling fins for maximum heat dissipation. The housing retains the crankshaft bearing, oil seal and rear wobble plate bearing support washer. **Crankshaft/Wobble Plate:** Precision die-cat to assure proper stroke, duration and alignment.

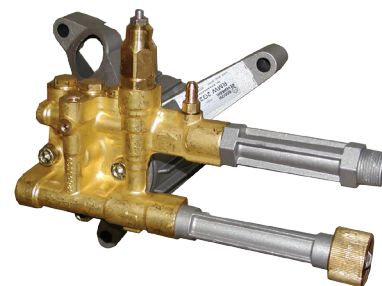
**BEARINGS:** Oversized ball bearing stabilizes the crankshaft and one needle style thrust bearing absorbs the plunger load and assures long radial plate life.

**VALVES, SEATS, AND SPRINGS: Ultra Form Cages:** Durable, strong, and long life. **Poppets and Spring:** 303 series stainless steel. **Valve Seat:** Brass with an external sealing o-ring on both inlet and discharge valves. **Valve Caps:** Machined brass for greater strength.

**PACKING AND PLUNGERS:** Dual seal system. **High Pressure Packing and Low-Pressure Seals:** "U" cup double lip Buna-N for a good positive seat. **Support and Guides:** Special anti-wear plastic, 1-piece construction to assure proper plunger alignment, maximize packing and seal life and prevent plunger wear and damage. **Plungers:** Solid hardened stainless steel, strong and durable.

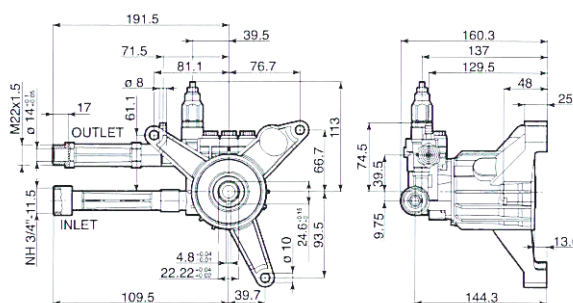
**OIL SEALS AND O-RINGS:** All are constructed of Buna-N rubber. The oil seals have stainless steel garder springs to assure constant tension on the sealing surface.

## DIMENSIONS



RMW

D version  
Hollow shaft pump ø 7/8"



### INCLUDES:

OUTLET: 22mm-M / 14mm

INLET: Garden Hose Thread with Filter

Fixed chemical injector with 1/8" barb fitting for installation of (DETHOSE-FIL4)  
1/4" Female inlet port open (red plastic plugged) for Thermal Relief Valve (TPP140-1/4) installation

PALLET QUANTITIES: 160

## SPECIFICATIONS

MODEL	MAX GPM	MAX LMP	MAX PSI	MAX BAR	POWER EBHP	BORE DIA MM	STROKE MM	CRANKSHAFT ID STAMP	WEIGHT LBS.
RMW2G20D	2	7.6	2000	138	2.7	12	7.9	6	5.1
RMW2G23B	2	7.6	2300	159	3.2	12	8.3	5	5.1
RMW2G25D	2	7.6	2500	172	3.4	12	8.3	5	7.5
RMW2.5G20D	2.5	9.5	2000	138	3.4	12	9.7	1	5.1
RMW2.5G23B	2.5	9.5	2300	159	3.9	12	9.7	1	5.1
RMW2.5G25D	2.5	9.5	2500	172	4.3	12	9.7	1	7.5

Oil Capacity = 3.5oz

Maximum Fluid Temperature = 140° F

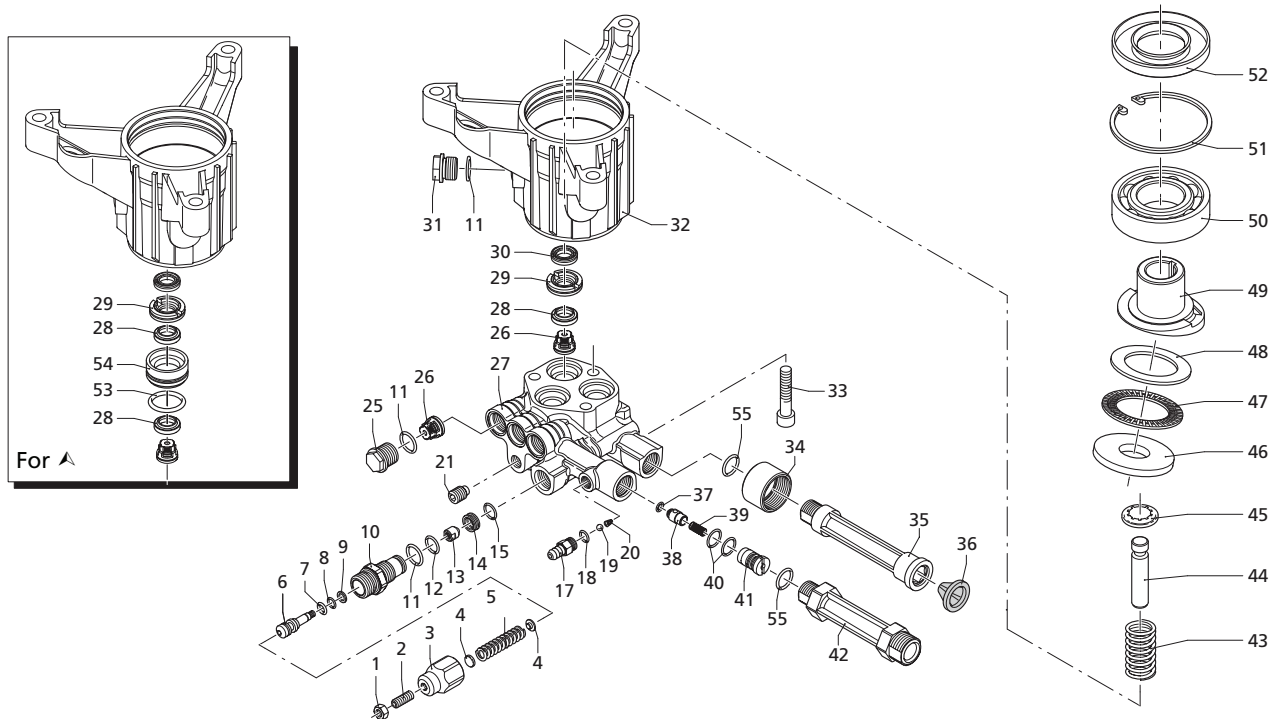
Inlet Thread = 3/4" GH

Discharge Thread = 22mm

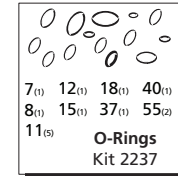
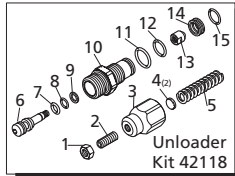
### Torque Specifications Inch pounds (ft. lbs)

HEAD	PISTON NUT	REAR COVER	SIDE COVER	VALVE CAP	CON RODS
221 (19)	N/A	228 (19)	N/A	221 (19)	N/A

**SPECIAL NOTE:** Use only AR64545 for the RM/XJ/SJ/BK Series pumps only: Do NOT change oil. Use oil only to add if low. This oil is a specially formulated synthetic with special additives for the demands of the RM, XJ, SJ and BK pump series. No other oil is factory approved for these pumps, and could result in pump failure.



## Repair Kits



Pos	Code	Description	Qty.	Pos	Code	Description	Qty.	Legend			
1	1980300	Nut M6	1	33	800220	Head bolt M8x45 (221 in/lbs) ○●▲ 3	3	For ○	For ●	For □	For ■
2	392840	Grub screw M6x16	1	34	380410	Head bolt M8x45 (221 in/lbs) □■ 3	3	RMW2G20	RMW2.5G20	RMW2G23B	RMW2.5G23B
3	2760480	Handle insert	1	35	2840270	Suction fitting 3/4" NH	1	For ▲ RMW2.5G25			
4	1980220	Plate spring	2	36	2840250	Suction extension	1				
5	2760410	Spring	1	37	7369	Inlet filter	1				
6	2760400	Valve piston	1	38	1460430	O-Ring ø4x2.5	1				
7	2260100	O-Ring ø6.02x2.62	1	39	2840350	Jet	1				
8	660190	O-Ring ø6.07x1.78	1	40	1343580	Spring	1				
9	2760210	Ring	1	41	800560	O-Ring ø8.73x1.78	2				
10	2840750	Piston guide	1	42	2840340	Detergent injector	1				
11	740290	O-Ring ø14x1.78	7	43	2840260	Outlet extension	1				
12	820510	O-Ring ø10.82x1.78	1	44	2840060	Spring	3				
13	2840760	By-pass jet	1	45	2840530	Piston ○●▲ 3	3				
14	2840770	Seat	1	46	2840040	Piston □■ 3	3				
15	1470210	O-Ring ø9x1	1	47	2840050	Ring	3				
16	851100	Grub screw M5x5	1	48	1980130	Thrust washer	1				
17	1982520	Hose nipple	1	49	1980250	Bearing	1				
18	480480	O-Ring ø4.48x1.78	1	50	1980240	Thrust washer	1				
19	1250280	Ball	1	51	2840430	Hollow shaft ○▲ 1	1				
20	1560520	Spring	1	52	2840800	Hollow shaft ● 1	1				
21	2840470	Grub screw M10x14	1	53	2840690	Hollow shaft □■ 1	1				
22	1060100	Ball	1	54	161060	Rear bearing	1				
23	2840450	Spring	1	55	161050	Circlip øi72	1				
24	2840440	East start seat	1	56	2840310	Seal	1				
25	2840130	Plug (221 in/lbs)	3	57	770590	O-Ring ø23.52x1.78	▲ 3				
26	2849050	Complete valve	6	58	2840550	Bushing	▲ 3				
27	2840020	Pump head - Aluminum ○● 1	1	59	2840890	O-Ring ø14x2	2				
28	2840860	Pump head - Brass ▲ 1	1								
29	2840870	Pump head - Brass □■ 1	1								
30	2200141	Gasket	3								
31	2840561	Bushing ○□ 3	3								
32	2840540	Bushing ▲ 3	3								
33	2840090	Bushing ●■ 3	3								
34	1683500	Seal	3								
35	1980740	Plug 3/8" G - Brass	1								
36	2840010	Pump housing	1								

AR64545 Oil  
OIL CAPACITY - 3.5 OZ