

Plunger Pumps

FEATURING

MANIFOLD: High strength forged brass or nickel plated for long term use.

BOLTS: Eight 10mm grade 8.8.

PLUNGERS: A special thick solid ceramic for long life, strong durability and more resilience.

CRANKCASE: Precision die-cast, large cooling fins and anodized for maximum heat dissipation. Bayonet style sight glass located in the rear and side cover, fill and side and bottom drain plugs.

BEARINGS: Oversized premium tapered roller bearing for maximum life and load distribution.

BEARINGS SUPPORTS: Precision die-cast and machined to assure concentricity and alignment.

VALVES, SEATS, AND SPRINGS: Stainless steel with specially designed Ultra Form cages to provide long life and positive seating.

SEALS AND U-PACKINGS: Continuously lubricating for extended life. Triple lip oil seal for assured crankcase seal.

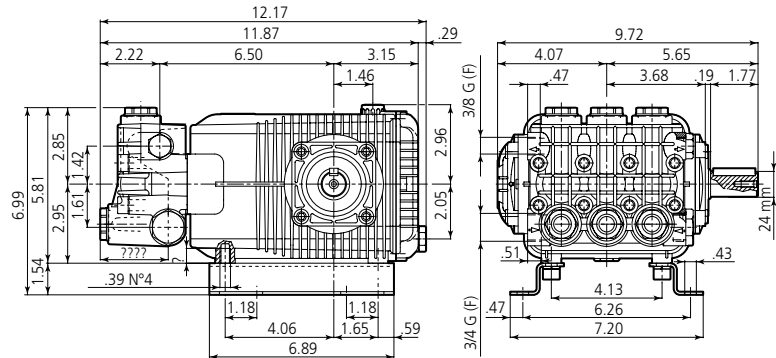
PLUNGER RODS: High strength stainless steel, for heavy duty use.

CONNECTING RODS: Two-piece special alloy aluminum based material, oversized for maximum strength, load disbursement, and long life. Heavy pin area construction, for added load strength.

DIMENSIONS



XWF N version Solid shaft pump ø 24 mm



SPECIFICATIONS

| MODEL | MAX GPM | MAX LMP | MAX PSI | MAX BAR | POWER EBHP | BORE DIA MM | STROKE MM | CRANKSHAFT ID STAMP | WEIGHT LBS. |
|-----------|---------|---------|---------|---------|------------|-------------|-----------|---------------------|-------------|
| XWF26.06N | 6.87 | 26 | 900 | 60 | 4.0 | 28 | 15.0 | 8 | 34 |
| XWF25.09N | 6.87 | 26 | 1300 | 90 | 5.5 | 28 | 15.0 | 8 | 34 |
| XWF26.12N | 6.87 | 26 | 1740 | 120 | 7.5 | 28 | 15.0 | 8 | 34 |
| XWF26.15N | 6.87 | 26 | 2200 | 150 | 10.0 | 28 | 15.0 | 8 | 34 |
| XWF30.10N | 7.92 | 30 | 1450 | 100 | 7.5 | 28 | 17.2 | 2 | 34 |
| XWF30.20N | 7.92 | 30 | 2900 | 200 | 15.0 | 28 | 17.2 | 2 | 34 |
| XWF36.17N | 9.51 | 36 | 2500 | 170 | 15.0 | 28 | 19.6 | 1 | 34 |

Oil Capacity = 32oz

Maximum Fluid Temperature = 140° F

Inlet Thread = 3/4" F

Discharge Thread = 3/8" F

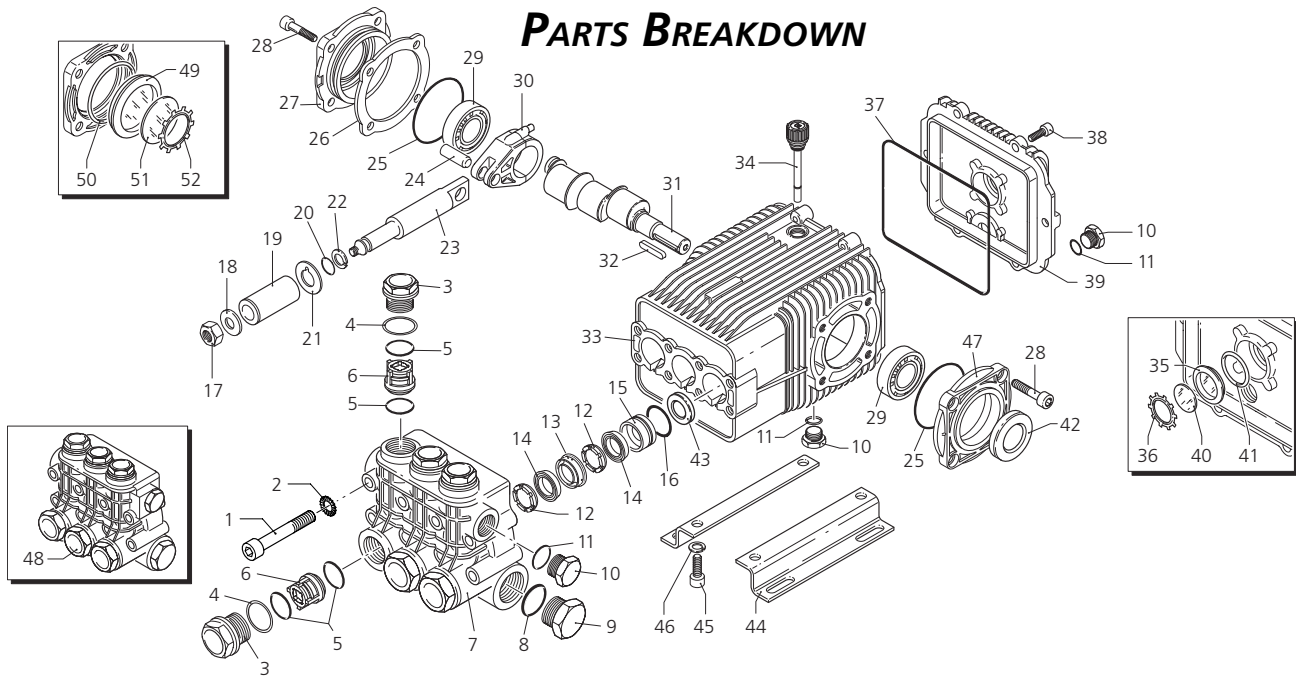
Torque Specifications Inch pounds (ft. lbs)

| HEAD | PISTON NUT | REAR COVER | SIDE COVER | VALVE CAP | CON RODS |
|----------|------------|------------|------------|-----------|----------|
| 442 (37) | 106 (8.8) | 92 (7.7) | 217 (18) | 602 (50) | 89 (7.5) |

SPECIAL NOTE: Use AR64516 Oil. First change oil after 50 hours of use. Then every 500 hours. This oil is specially formulated to provide correct lubrication properties for our pumps. **No** other oil is factory approved for these pumps. **ANNOVI REVERBERI High Performance Pumps**



PARTS BREAKDOWN



| Pos. | Code | Description | Qty. | Pos. | Code | Description | Qty. | Legend | | |
|------|---------|------------------------|------|------|---------|----------------------|------|----------|----------|----------|
| 1 | 1940260 | Screw | 8 | 38 | 1200430 | Screw | 6 | Ø 28 | Ø 28 | Ø 28 |
| 2 | 650530 | Washer | 8 | 39 | 1949010 | Complete cover | 1 | For ○ | For □ | For ▼ |
| 3 | 1940140 | Plug | 6 | 40 | 1780690 | Disc | 1 | XWF26.06 | XWF30.10 | XWF36.17 |
| 4 | 1940150 | Ring | 6 | 41 | 1140450 | O-Ring | 1 | XWF26.09 | XWF30.18 | |
| 5 | 1140450 | O-Ring | 12 | 42 | 820680 | Seal | 1 | XWF26.12 | XWF30.20 | |
| 6 | 1949050 | Complete valve | 6 | 43 | 1940560 | Seal | 3 | XWF26.15 | | |
| 7 | 1941550 | Pump head | 1 | 44 | 1940370 | Base | 2 | XWF26.20 | | |
| 8 | 550350 | O-Ring | 1 | 45 | 1940380 | Screw | 4 | | | |
| 9 | 1140300 | Plug 3/4" G | 1 | 46 | 200231 | Washer | 4 | | | |
| 10 | 1980740 | Plug 3/8" G | 3 | 47 | 1941240 | Open bearing support | 1 | | | |
| 11 | 740290 | O-Ring | 3 | 48 | 1949205 | Pump head assem Ø28 | 1 | | | |
| 12 | 1941570 | Support ring Ø28 | 6 | 49 | 1941270 | Oil indicator | 1 | | | |
| 13 | 1140280 | Front piston guide Ø28 | 3 | 50 | 100410 | O-Ring | 1 | | | |
| 14 | 820630 | Gasket Ø28 | 6 | 51 | 1941260 | Disc | 1 | | | |
| 15 | 1941560 | Rear piston guide Ø28 | 3 | 52 | 1941290 | Snap ring | 1 | | | |
| 16 | 1140490 | O-Ring | 3 | | | | | | | |
| 17 | 1940570 | Nut | 3 | | | | | | | |
| 18 | 1940580 | Washer | 3 | | | | | | | |
| 19 | 1140190 | Piston Ø28 | 3 | | | | | | | |
| 20 | 880840 | O-Ring | 3 | | | | | | | |
| 21 | 1140160 | Spacer Ø28 | 3 | | | | | | | |
| 22 | 1940120 | Ring | 3 | | | | | | | |
| 23 | 1940070 | Guiding piston | 3 | | | | | | | |
| 24 | 1940060 | Piston pin | 3 | | | | | | | |
| 25 | 1941380 | O-Ring | 3 | | | | | | | |
| 26 | 1941390 | 0,05 mm shim | 1-3 | | | | | | | |
| 27 | 1941400 | 0,10 mm shim | 1-3 | | | | | | | |
| 28 | 1941410 | 0,19 mm shim | 1-3 | | | | | | | |
| 29 | 1941420 | 0,25 mm shim | 1-3 | | | | | | | |
| 30 | 1949011 | Complete side cover | 1 | | | | | | | |
| 31 | 850370 | Screw | 8 | | | | | | | |
| 32 | 1140410 | Bearing | 2 | | | | | | | |
| 33 | 1940050 | Con rod | 3 | | | | | | | |
| 34 | 1940980 | Crankshaft | ○ 1 | | | | | | | |
| 35 | 1940170 | Crankshaft | □ 1 | | | | | | | |
| 36 | 1940160 | Crankshaft | ▼ 1 | | | | | | | |
| 37 | 620250 | Key | 1 | | | | | | | |
| | 1941330 | Pump housing | 1 | | | | | | | |
| | 1140370 | Oil cap | 1 | | | | | | | |
| | 1260250 | Oil indicator | 1 | | | | | | | |
| | 1260430 | Snap ring | 1 | | | | | | | |
| | 1940410 | O-Ring | 1 | | | | | | | |

| Repair Kits | | | |
|---------------------|----------------|------------------|--------------------|
| Water Seal Kit 1853 | Valve Kit 2780 | Pistons Kit 1849 | Oil Seals Kit 1853 |
| Pos. Qty. | Pos. Qty. | Pos. Qty. | Pos. Qty. |
| 12 3 | 5 6 | 19 3 | 25 2 |
| 14 3 | 6 6 | | 37 1 |
| 16 3 | | | 42 1 |
| | | | 43 1 |

| Piston Guide Kit 2507 | |
|-----------------------|--|
| Pos. Qty. | |
| 13 3 | |
| 15 3 | |

| Special Parts | | |
|---------------|-----------------------|------|
| Code | Description | Qty. |
| 2036 | Viton water seals Ø28 | 1 |

