

# Plunger Pumps

## FEATURING

**MANIFOLD:** High strength 316L Stainless Steel to insure long term use.

**BOLTS:** 304L stainless steel.

**PLUNGERS:** A special ultra thick solid ceramic for long life, strong durability and more resilience.

**CRANKCASE:** Precision die-cast, large cooling fins and special anticorrosion finish. Both side and rear cover sight glass.

**BEARINGS:** Premium SKF tapered roller bearings that provide extra load support, smoother and lower crankcase running temperatures and over all extended pump life.

**VALVES, SEATS, AND SPRINGS:** Stainless steel with specially designed cages to provide seating and extended valve life.

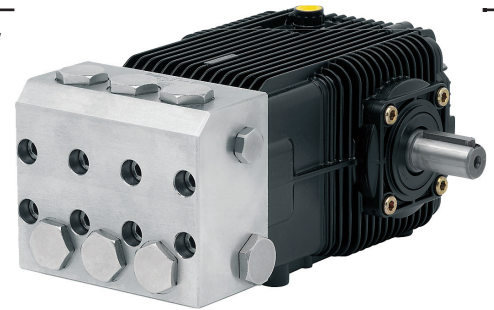
**SEALS AND V-PACKINGS:** Viton are continuously lubricating for extended life. SPL plunger retainers.

**OIL SEALS:** Triple lipped and spring loaded for greater durability and extended life..

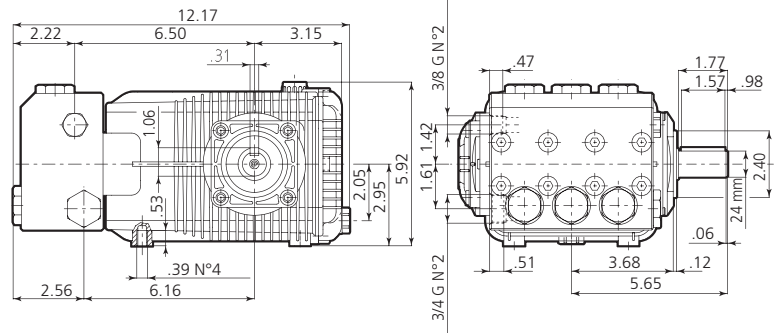
**PLUNGER RODS:** High strength stainless steel.

**CONNECTING RODS:** One piece special alloy bronze for higher pressures, oversized for maximum strength, load disbursement, and long life. Heavy pin area construction.

## DIMENSIONS



XWL-SS N version Solid shaft pump ø 24 mm



## SPECIFICATIONS

MODEL	MAX GPM	MAX LMP	MAX PSI	MAX BAR	POWER EBHP	BORE DIA MM	STROKE MM	CRANKSHAFT ID STAMP	WEIGHT LBS.
XWF-SS30.17N	8	30	2500	172	12.5	28	17.2	2	36

Oil Capacity = 32oz

Maximum Fluid Temperature = 140° F

Inlet Thread = 3/4" F

Discharge Thread = 3/8" F

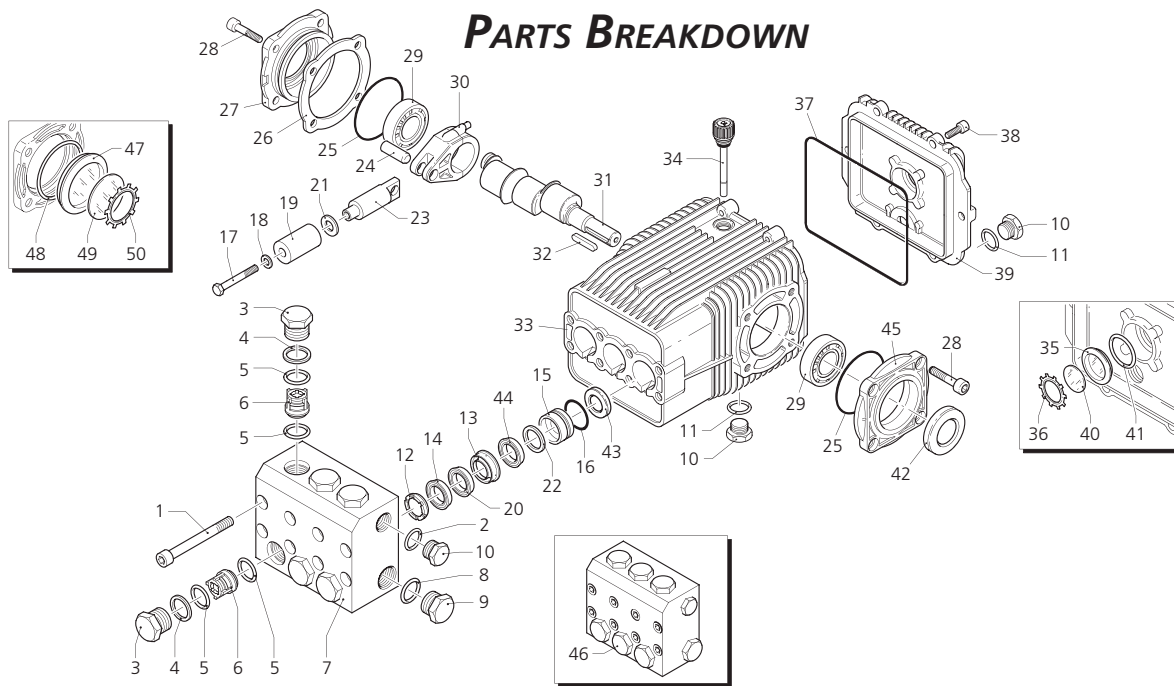
### Torque Specifications Inch pounds (ft. lbs)

HEAD	PISTON NUT	REAR COVER	SIDE COVER	VALVE CAP	CON RODS
442 (37)	106 (8.8)	92 (7.7)	217 (18)	602 (50)	89 (7.5)

**SPECIAL NOTE:** Use AR64516 Oil. First change oil after 50 hours of use. Then every 500 hours. This oil is specially formulated to provide correct lubrication properties for our pumps. **No** other oil is factory approved for these pumps. **ANNOVI REVERBERI** High Performance Pumps



**PARTS BREAKDOWN**



Pos.	Code	Description	Qty.	Pos.	Code	Description	Qty.
1	1941360	Screw	8	40	1780690	Disc	1
2	740291	O-Ring	1	41	1140450	O-Ring	1
3	2520030	Plug	6	42	820680	Seal	1
4	1940150	Ring	6	43	1940560	Seal	3
5	1140451	O-Ring	12	44	2520361	Gasket	3
6	2529050	Complete valve	6	45	2520320	Open bearing support	1
7	2520150	Pump head	1	46	2529200	Pump head assembly	1
8	550351	O-Ring	1	47	1941270	Oil indicator	1
9	2520040	Plug 3/4" G	1	48	100410	O-Ring	1
10	2340350	Plug 3/8" G	3	49	1941260	Disc	1
11	740290	O-Ring	2	50	1941290	Snap ring	1
12	1941570	Support ring	3				
13	2520200	Front piston guide	3				
14	820631	Gasket	3				
15	2520210	Rear piston guide	3				
16	820491	O-Ring	3				
17	2520260	Screw	3				
18	2520250	Washer	3				
19	2520240	Piston	3				
20	2520220	Ring	3				
21	2520270	Spacer	3				
22	2520230	Ring	3				
23	2520280	Guiding piston	3				
24	1940060	Piston pin	3				
25	1941380	O-Ring	2				
26	1941390	0,05 mm shim	1-3				
27	1941400	0,10 mm shim	1-3				
28	1941410	0,19 mm shim	1-3				
29	1941420	0,25 mm shim	1-3				
27	2529011	Complete side cover	1				
28	2340240	Screw	8				
29	1140410	Bearing	2				
30	1940050	Con rod	3				
31	1940170	Crankshaft	1				
32	650250	Key	1				
33	3520330	Pump housing	1				
34	1140370	Oil cap	1				
35	1260250	Oil indicator	1				
36	1260430	Snap ring	1				
37	1940410	O-Ring	1				
38	680560	Screw	6				
39	2529010	Complete cover	1				

**Legend**

Ø 28  
For   
XWF-SS30.17

**Repair Kits**

Water Seal Kit 2164		Valve Kit 2162		Pistons Kit 2163		Oil Seals Kit 2781	
Pos.	Qty.	Pos.	Qty.	Pos.	Qty.	Pos.	Qty.
12	3	5	6	19	3	25	2
14	3	6	6			37	1
16	3					42	1
20	3					43	1
22	3						
35	3						

Piston Guide Kit 2165	
Pos.	Qty.
13	3
15	3