

# Plunger Pumps

## FEATURING

**MANIFOLD:** High strength forged brass for long term use.

**BOLTS:** Eight 6mm grade 12.9.

**PLUNGERS:** A special thick solid ceramic for long life, strong durability and more resilience.

**CRANKCASE:** Precision die-cast, large cooling fins and anodized for maximum heat dissipation. Sight glass, fill and side and bottom drain plugs.

**BEARINGS:** Oversized for maximum life and load disbursement, needle bearing on the drive side and ball on the non-drive side. Each bearing is held in position on the crankshaft and crankcase by snap rings. This assures positive alignment and centering of the connecting rods and crankshaft in relation to the crankcase, it also eliminates the crankshaft from floating.

**VALVES, SEATS, AND SPRINGS:** Stainless steel with specially designed Ultra Form cages to provide extra long life and positive seating.

**SEALS AND V-PACKINGS:** Continuously lubricating for extended life.

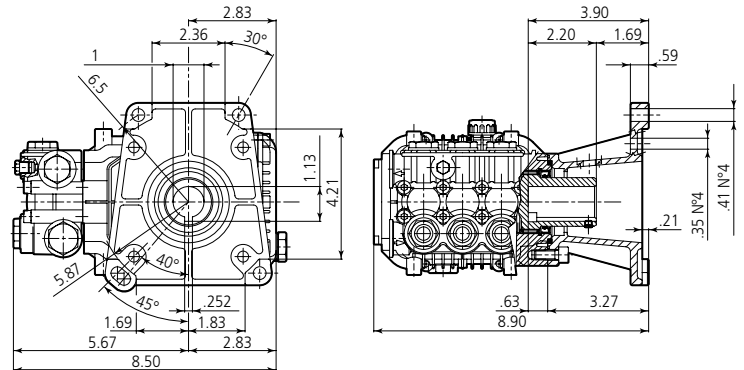
**PLUNGER RODS:** High strength stainless steel.

**CONNECTING RODS:** One piece special alloy aluminum based, oversized for maximum strength, load disbursement, and long life. Heavy pin area construction, for added load strength.

## DIMENSIONS



**XMV** D version + F24  
Hollow shaft pump ø 1"



## SPECIFICATIONS

MODEL	MAX GPM	MAX LMP	MAX PSI	MAX BAR	POWER EBHP	BORE DIA MM	STROKE MM	CRANKSHAFT ID STAMP	WEIGHT LBS.
XMV3G30D-F24	3.0	11.4	3000	205	5.5	15	7.6	9	16
XMV3.5G25D-F24	3.5	13.2	2500	170	5.5	15	8.2	8	16
XMV3.5G30D-F24	3.5	13.2	3000	205	7.0	15	8.2	8	16
XMV4G30D-F24	4.0	15.1	3000	205	7.5	15	9.4	7	16
XMV4G32D-F24	4.0	15.1	3200	221	10.0	15	9.4	7	16

Oil Capacity = 14.6 oz

Maximum Fluid Temperature = 140° F

Inlet Thread = 1/2" F

Discharge Thread = 3/8" F

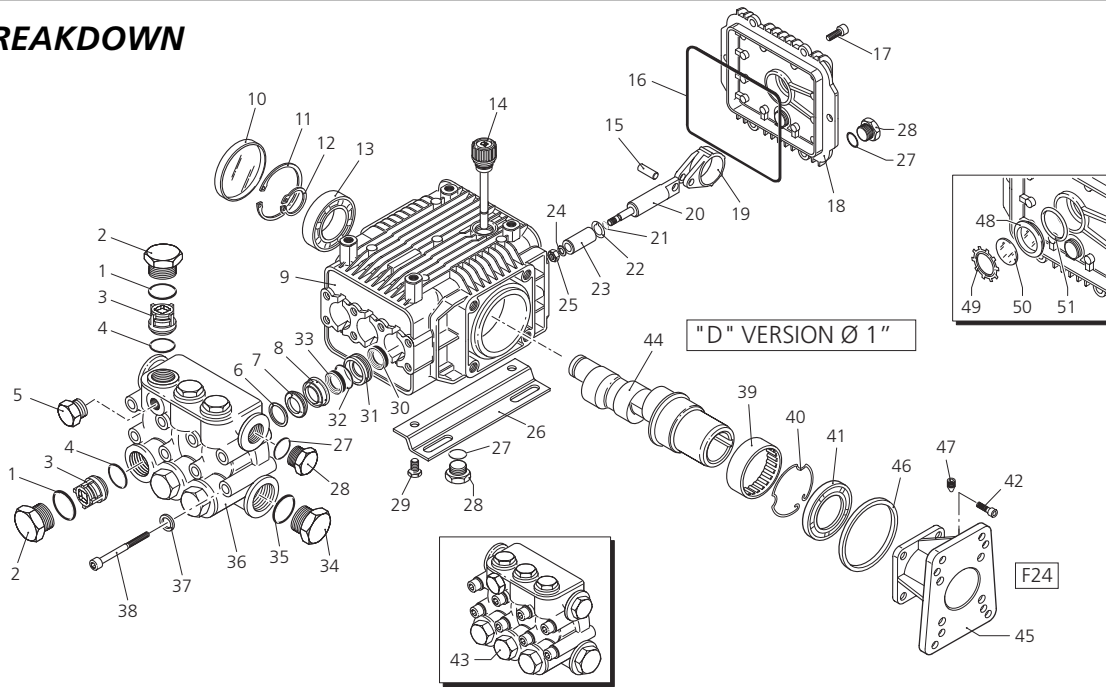
### Torque Specifications Inch pounds (ft. lbs)

HEAD	PISTON NUT	REAR COVER	SIDE COVER	VALVE CAP	CON RODS
133 (11)	106 (8.8)	89 (7.5)	N/A	442 (37)	N/A

**SPECIAL NOTE:** Use AR64516 Oil. First change oil after 50 hours of use. Then every 500 hours. This oil is specially formulated to provide correct lubrication properties for our pumps. **No** other oil is factory approved for these pumps.



**PARTS BREAKDOWN**



Pos.	Code	Description	Qty.	Pos.	Code	Description	Qty.	Legend			
1	960160	O-Ring	6	41	480671	Seal	1	Ø 15	Ø 15	Ø 15	
2	1260162	Plug	6	42	180030	Screw	4	For ○	For □	For ▼	
3	1269050	Complete valve	6	43	1789200	Pump head assembly	1	XMV3G25	XMV3.5G22	XMV4G20	
4	880830	O-Ring	6	44	1780340	Hollow shaft	○ 1	XMV3G30	XMV3.5G25	XMV4G22	
5	620301	Plug	1	45	1780920	Hollow shaft	□ 1		XMV3.5G30	XMV4G25	
6	1780130	Support ring	3	46	1780330	Hollow shaft	▼ 1			XMV4G30	
7	1260130	Gasket	3	45	1380550	Gas engine flange	1			XMV4G32	
8	1780090	Piston guide	3	46	1780430	Bushin	1				
9	1780010	Pump body	1	47	820440	Grub screw	1				
10	1266740	Cap	1	48	1260250	Oil indicator	1				
11	1260790	Circlip	1	49	1260430	Snap ring	1				
12	1780550	Snap ring	1	50	1780690	Disc	1				
13	1780490	Bearing	1	51	1140450	O-Ring	1				
14	880130	Oil cap	1								
15	1780050	Piston pin	3								
16	1780510	O-Ring	1								
17	1200430	Screw	6								
18	1789010	Complete cover	1								
19	1780040	Con rod	3								
20	1780060	Guiding piston	3								
21	480480	O-Ring	3								
22	1260091	Spacer disc	3								
23	1780070	Piston	3								
24	1260100	Piston washer	3								
25	1260110	Nut	3								
26	1380141	Base	2								
26b	2729	5/8" Rail Kit	1								
26c	2633H	2-5/8" Rail Kit	1								
27	740290	O-Ring	3								
28	1980740	Plug 3/8" G	3								
29	1260470	Screw	4								
30	1260460	Seal	3								
31	1780100	Rear piston guide	3								
32	770260	O-Ring	3								
33	1260440	Gasket	3								
34	820361	Plug 1/2" G Brass	1								
35	180101	O-Ring	1								
36	1780380	Head	1								
37	1381550	Washer	8								
38	1322730	Screw	8								
39	1321190	Bearing	1								
40	1321080	Snap ring	1								

Legend			
Ø 15	Ø 15	Ø 15	
For ○	For □	For ▼	
XMV3G25	XMV3.5G22	XMV4G20	
XMV3G30	XMV3.5G25	XMV4G22	
	XMV3.5G30	XMV4G25	
		XMV4G30	
		XMV4G32	

Repair Kits			
Water Seal Kit 2741	Pistons Kit 2544	Valve Kit 1864	Oil Seals Kit 2787
Pos. Qty.	Pos. Qty.	Pos. Qty.	Pos. Qty.
7 3	21 3	3 6	10 1
32 3	22 3	4 6	16 1
33 3	23 3		30 3
	24 3		41 1
	25 3		

Support Rings Kit 2740	
Pos.	Qty.
6	3

Special Parts		
Code	Description	Qty.
2776	Viton water seals Ø15	1



# Plunger Pumps

## FEATURING

**MANIFOLD:** High strength forged brass for long term use.

**BOLTS:** Eight 6mm grade 12.9.

**PLUNGERS:** A special thick solid ceramic for long life, strong durability and more resilience.

**CRANKCASE:** Precision die-cast, large cooling fins and anodized for maximum heat dissipation. Sight glass, fill and side and bottom drain plugs.

**BEARINGS:** Oversized for maximum life and load disbursement, needle bearing on the drive side and ball on the non-drive side. Each bearing is held in position on the crankshaft and crankcase by snap rings. This assures positive alignment and centering of the connecting rods and crankshaft in relation to the crankcase, it also eliminates the crankshaft from floating.

**VALVES, SEATS, AND SPRINGS:** Stainless steel with specially designed Ultra Form cages to provide extra long life and positive seating.

**SEALS AND V-PACKINGS:** Continuously lubricating for extended life.

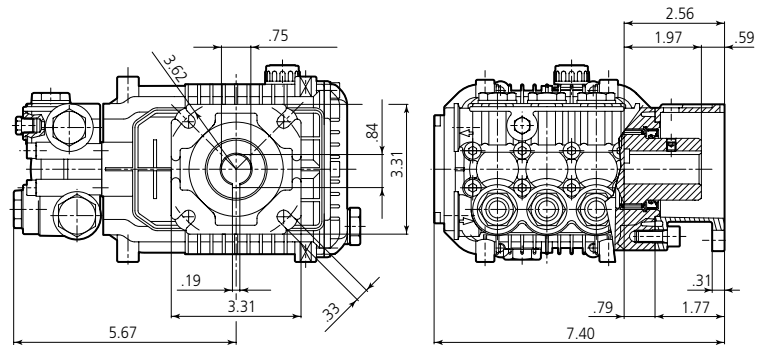
**PLUNGER RODS:** High strength stainless steel.

**CONNECTING RODS:** One piece special alloy aluminum based, oversized for maximum strength, load disbursement, and long life. Heavy pin area construction, for added load strength.

## DIMENSIONS



**XMV** D version + F25  
Hollow shaft pump ø 3/4"



## SPECIFICATIONS

MODEL	MAX GPM	MAX LMP	MAX PSI	MAX BAR	POWER EBHP	BORE DIA MM	STROKE MM	CRANKSHAFT ID STAMP	WEIGHT LBS.
XMV2.5G26D-F25	2.5	9.5	2600	179	5.0	15	6.2	10	15
XMV3G27D-F25	3.0	11.4	2500	170	5.0	15	7.6	9	15
XMV3.5G25D-F25	3.5	13.2	2500	170	5.5	15	8.2	8	15

Oil Capacity = 14.6 oz

Maximum Fluid Temperature = 140° F

Inlet Thread = 1/2" F

Discharge Thread = 3/8" F

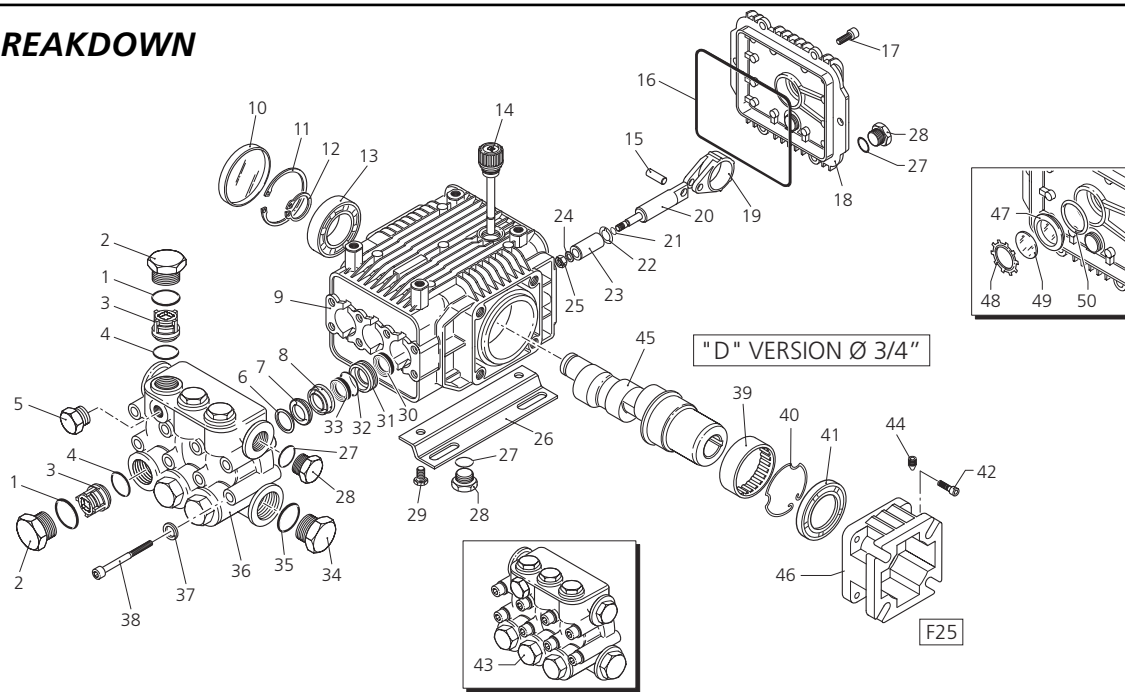
### Torque Specifications Inch pounds (ft. lbs)

HEAD	PISTON NUT	REAR COVER	SIDE COVER	VALVE CAP	CON RODS
133 (11)	106 (8.8)	89 (7.5)	N/A	442 (37)	N/A

**SPECIAL NOTE:** Use AR64516 Oil. First change oil after 50 hours of use. Then every 500 hours. This oil is specially formulated to provide correct lubrication properties for our pumps. **No** other oil is factory approved for these pumps.



**PARTS BREAKDOWN**



Pos.	Code	Description	Qty.	Pos.	Code	Description	Qty.	Legend			
1	960160	O-Ring	6	41	480671	Seal	1	Ø 15	Ø 18		
2	1260162	Plug	6	42	180030	Screw	4	For ○	For □		
3	1269050	Complete valve	6	43	1789200	Pump head assembly	1	XMV2.5G26	XMV3.5G22		
4	880830	O-Ring	6	44	820440	Grub screw	1	XMV3G27	XMV3.5G25		
5	620301	Plug	1	45	1780590	Hollow shaft	○ 1	XMV3G30			
6	1780130	Support ring	3	45	1780930	Hollow shaft	□ 1				
7	1260130	Gasket	3	46	1780580	Motor flange	1				
8	1780090	Piston guide	3	47	1260250	Oil indicator	1				
9	1780010	Pump body	1	48	1260430	Snap ring	1				
10	1266740	Cap	1	49	1780690	Disc	1				
11	1260790	Circlip	1	50	1140450	O-Ring	1				
12	1780550	Snap ring	1								
13	1780490	Bearing	1								
14	880130	Oil cap	1								
15	1780050	Piston pin	3								
16	1780510	O-Ring	1								
17	1200430	Screw	6								
18	1789010	Complete cover	1								
19	1780040	Con rod	3								
20	1780060	Guiding piston	3								
21	480480	O-Ring	3								
22	1260091	Spacer disc	3								
23	1780070	Piston	3								
24	1260100	Piston washer	3								
25	1260110	Nut	3								
26	1380141	Base	2								
26b	2729	5/8" Rail Kit	1								
26c	2633H	2-5/8" Rail Kit	1								
27	740290	O-Ring	3								
28	1980740	Plug 3/8" G	3								
29	1260470	Screw	4								
30	1260460	Seal	3								
31	1780100	Rear piston guide	3								
32	770260	O-Ring	3								
33	1260440	Gasket	3								
34	820361	Plug 1/2" G Brass	1								
35	180101	O-Ring	1								
36	1780380	Head	1								
37	1381550	Washer	8								
38	1322730	Screw	8								
39	1321190	Bearing	1								
40	1321080	Snap ring	1								

Legend			
Ø 15	Ø 18		
For ○	For □		
XMV2.5G26	XMV3.5G22		
XMV3G27	XMV3.5G25		
XMV3G30			

Repair Kits							
Water Seal Kit 2741		Pistons Kit 2544		Valve Kit 1864		Oil Seals Kit 2787	
Pos.	Qty.	Pos.	Qty.	Pos.	Qty.	Pos.	Qty.
7	3	21	3	3	6	10	1
32	3	22	3	4	6	16	1
33	3	23	3			30	3
		24	3			41	1
		25	3				

Support Rings Kit 2740	
Pos.	Qty.
6	3

Special Parts		
Code	Description	Qty.
2776	Viton water seals Ø15	1



# Plunger Pumps

## FEATURING

**MANIFOLD:** High strength forged brass for long term use.

**BOLTS:** Eight 6mm grade 12.9.

**PLUNGERS:** A special thick solid ceramic for long life, strong durability and more resilience.

**CRANKCASE:** Precision die-cast, large cooling fins and anodized for maximum heat dissipation. Sight glass, fill and side and bottom drain plugs.

**BEARINGS:** Oversized for maximum life and load disbursement, needle bearing on the drive side and ball on the non-drive side. Each bearing is held in position on the crankshaft and crankcase by snap rings. This assures positive alignment and centering of the connecting rods and crankshaft in relation to the crankcase, it also eliminates the crankshaft from floating.

**VALVES, SEATS, AND SPRINGS:** Stainless steel with specially designed Ultra Form cages to provide extra long life and positive seating.

**SEALS AND V-PACKINGS:** Continuously lubricating for extended life.

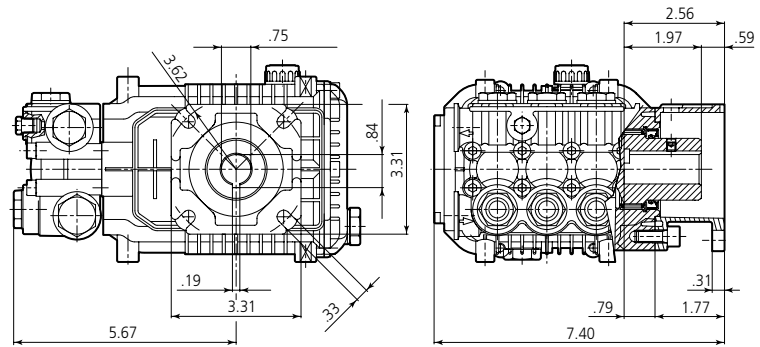
**PLUNGER RODS:** High strength stainless steel.

**CONNECTING RODS:** One piece special alloy aluminum based, oversized for maximum strength, load disbursement, and long life. Heavy pin area construction, for added load strength.

## DIMENSIONS



**XMV** D version + F25  
Hollow shaft pump ø 3/4"



## SPECIFICATIONS

MODEL	MAX GPM	MAX LMP	MAX PSI	MAX BAR	POWER EBHP	BORE DIA MM	STROKE MM	CRANKSHAFT ID STAMP	WEIGHT LBS.
XMV2.5G26D-F25	2.5	9.5	2600	179	5.0	15	6.2	10	15
XMV3G25D-F25	3.0	11.4	2500	170	5.0	15	7.6	9	15
XMV3.5G25D-F25	3.5	13.2	2500	170	5.5	15	8.2	8	15

Oil Capacity = 14.6 oz

Maximum Fluid Temperature = 140° F

Inlet Thread = 1/2" F

Discharge Thread = 3/8" F

### Torque Specifications Inch pounds (ft. lbs)

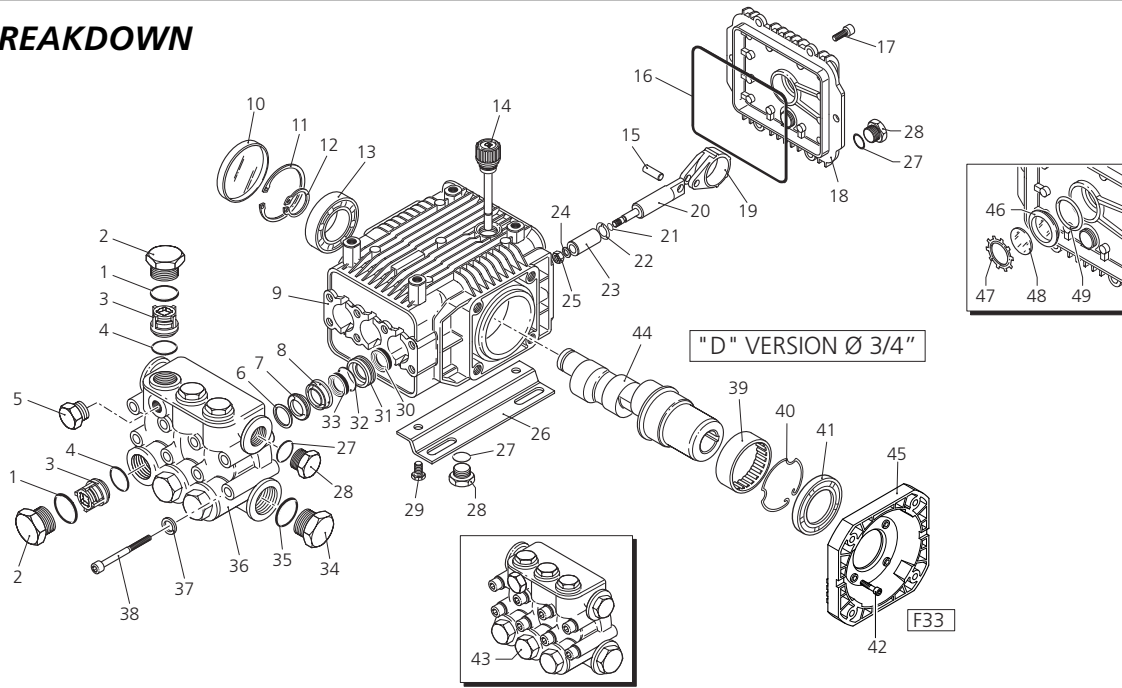
HEAD	PISTON NUT	REAR COVER	SIDE COVER	VALVE CAP	CON RODS
133 (11)	106 (8.8)	89 (7.5)	N/A	442 (37)	N/A

**SPECIAL NOTE:** Use AR64516 Oil. First change oil after 50 hours of use. Then every 500 hours. This oil is specially formulated to provide correct lubrication properties for our pumps. **No** other oil is factory approved for these pumps.





**PARTS BREAKDOWN**



Pos.	Code	Description	Qty.	Pos.	Code	Description	Qty.	Legend																																																											
1	960160	O-Ring	6	41	480671	Seal	1	Ø 15																																																											
2	1260162	Plug	6	42	620610	Screw	4	For □																																																											
3	1269050	Complete valve	6	43	1789200	Pump head assembly	1	XMV3.5G25																																																											
4	880830	O-Ring	6	44	1780930	Hollow shaft	1	<b>Repair Kits</b> <table border="1"> <thead> <tr> <th colspan="2">Water Seal Kit 2741</th> <th colspan="2">Pistons Kit 2544</th> <th colspan="2">Valve Kit 1864</th> <th colspan="2">Oil Seals Kit 2787</th> </tr> <tr> <th>Pos.</th> <th>Qty.</th> <th>Pos.</th> <th>Qty.</th> <th>Pos.</th> <th>Qty.</th> <th>Pos.</th> <th>Qty.</th> </tr> </thead> <tbody> <tr> <td>7</td> <td>3</td> <td>21</td> <td>3</td> <td>3</td> <td>6</td> <td>10</td> <td>1</td> </tr> <tr> <td>32</td> <td>3</td> <td>22</td> <td>3</td> <td>4</td> <td>6</td> <td>16</td> <td>1</td> </tr> <tr> <td>33</td> <td>3</td> <td>23</td> <td>3</td> <td></td> <td></td> <td>30</td> <td>3</td> </tr> <tr> <td></td> <td></td> <td>24</td> <td>3</td> <td></td> <td></td> <td>41</td> <td>1</td> </tr> <tr> <td></td> <td></td> <td>25</td> <td>3</td> <td></td> <td></td> <td></td> <td></td> </tr> </tbody> </table>				Water Seal Kit 2741		Pistons Kit 2544		Valve Kit 1864		Oil Seals Kit 2787		Pos.	Qty.	Pos.	Qty.	Pos.	Qty.	Pos.	Qty.	7	3	21	3	3	6	10	1	32	3	22	3	4	6	16	1	33	3	23	3			30	3			24	3			41	1			25	3				
Water Seal Kit 2741		Pistons Kit 2544		Valve Kit 1864		Oil Seals Kit 2787																																																													
Pos.	Qty.	Pos.	Qty.	Pos.	Qty.	Pos.	Qty.																																																												
7	3	21	3	3	6	10	1																																																												
32	3	22	3	4	6	16	1																																																												
33	3	23	3			30	3																																																												
		24	3			41	1																																																												
		25	3																																																																
5	620301	Plug	1	45	1780910	Motor flange	1	<table border="1"> <thead> <tr> <th colspan="2">Support Rings Kit 2740</th> </tr> <tr> <th>Pos.</th> <th>Qty.</th> </tr> </thead> <tbody> <tr> <td>6</td> <td>3</td> </tr> </tbody> </table>				Support Rings Kit 2740		Pos.	Qty.	6	3																																																		
Support Rings Kit 2740																																																																			
Pos.	Qty.																																																																		
6	3																																																																		
6	1780130	Support ring	3	46	1260250	Oil indicator	1																																																												
7	1260130	Gasket	3	47	1260430	Snap ring	1																																																												
8	1780090	Piston guide	3	48	1780690	Disc	1																																																												
9	1780010	Pump body	1	49	1140450	O-Ring	1																																																												
10	1266740	Cap	1																																																																
11	1260790	Circlip	1																																																																
12	1780550	Snap ring	1																																																																
13	1780490	Bearing	1																																																																
14	880130	Oil cap	1																																																																
15	1780050	Piston pin	3																																																																
16	1780510	O-Ring	1																																																																
17	1200430	Screw	6																																																																
18	1789010	Complete cover	1																																																																
19	1780040	Con rod	3																																																																
20	1780060	Guiding piston	3																																																																
21	480480	O-Ring	3																																																																
22	1260091	Spacer disc	3																																																																
23	1780070	Piston	3																																																																
24	1260100	Piston washer	3																																																																
25	1260110	Nut	3																																																																
26	1380141	Base	2																																																																
26b	2729	5/8" Rail Kit	1																																																																
26c	2633H	2-5/8" Rail Kit	1																																																																
27	740290	O-Ring	3																																																																
28	1980740	Plug 3/8" G	3																																																																
29	1260470	Screw	4																																																																
30	1260460	Seal	3																																																																
31	1780100	Rear piston guide	3																																																																
32	770260	O-Ring	3																																																																
33	1260440	Gasket	3																																																																
34	820361	Plug 1/2" G Brass	1																																																																
35	180101	O-Ring	1																																																																
36	1780380	Head	1																																																																
37	1381550	Washer	8																																																																
38	1322730	Screw	8																																																																
39	1321190	Bearing	1																																																																
40	1321080	Snap ring	1																																																																
								<b>Special Parts</b> <table border="1"> <thead> <tr> <th>Code</th> <th>Description</th> <th>Qty.</th> </tr> </thead> <tbody> <tr> <td>2776</td> <td>Viton water seals Ø15</td> <td>1</td> </tr> </tbody> </table>				Code	Description	Qty.	2776	Viton water seals Ø15	1																																																		
Code	Description	Qty.																																																																	
2776	Viton water seals Ø15	1																																																																	



# Plunger Pumps

## FEATURING

**MANIFOLD:** High strength forged brass for long term use.

**BOLTS:** Eight 6mm grade 12.9.

**PLUNGERS:** A special thick solid ceramic for long life, strong durability and more resilience.

**CRANKCASE:** Precision die-cast, large cooling fins and anodized for maximum heat dissipation. Sight glass, fill and side and bottom drain plugs.

**BEARINGS:** Oversized for maximum life and load disbursement, needle bearing on the drive side and ball on the non-drive side. Each bearing is held in position on the crankshaft and crankcase by snap rings. This assures positive alignment and centering of the connecting rods and crankshaft in relation to the crankcase, it also eliminates the crankshaft from floating.

**VALVES, SEATS, AND SPRINGS:** Stainless steel with specially designed Ultra Form cages to provide extra long life and positive seating.

**SEALS AND V-PACKINGS:** Continuously lubricating for extended life.

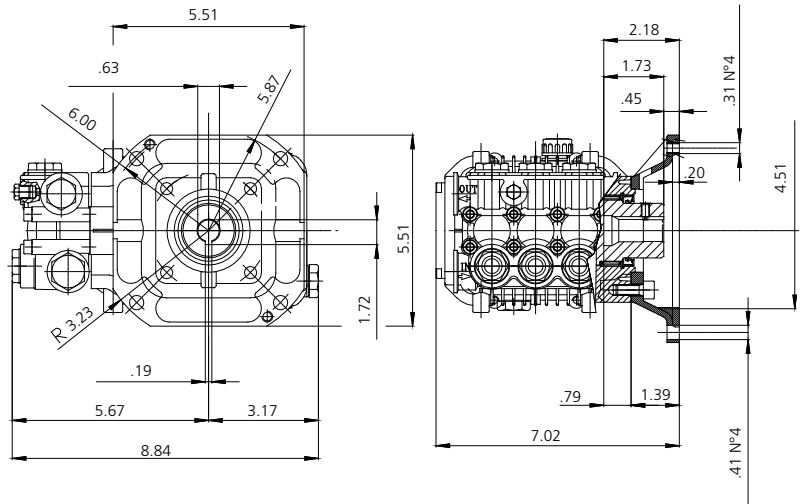
**PLUNGER RODS:** High strength stainless steel.

**CONNECTING RODS:** One piece special alloy aluminum based, oversized for maximum strength, load disbursement, and long life. Heavy pin area construction, for added load strength.

## DIMENSIONS



**XMV** E version 5/8 + F33  
Hollow shaft pump ø 5/8



## SPECIFICATIONS

MODEL	MAX GPM	MAX LMP	MAX PSI	MAX BAR	POWER EBHP	BORE DIA MM	STROKE MM	CRANKSHAFT ID STAMP	WEIGHT LBS.
XMV2G25E-F33	2.11	8.0	2500	172	5.0	15	4.8	12	15

Oil Capacity = 14.6 oz

Maximum Fluid Temperature = 140° F

Inlet Thread = 1/2" F

Discharge Thread = 3/8" F

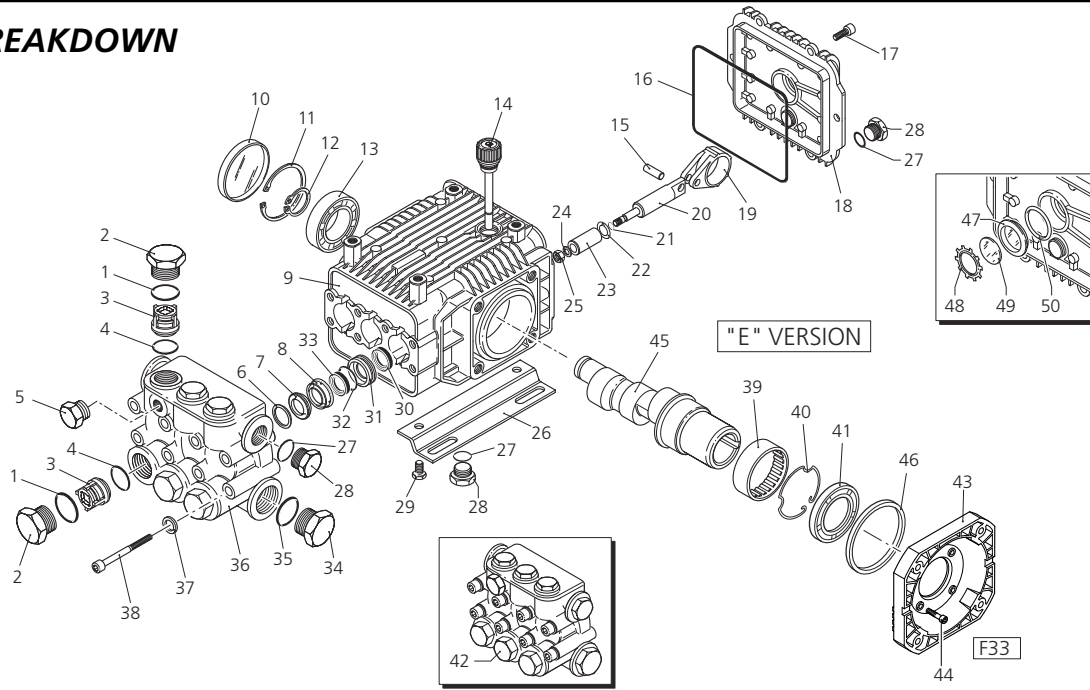
### Torque Specifications Inch pounds (ft. lbs)

HEAD	PISTON NUT	REAR COVER	SIDE COVER	VALVE CAP	CON RODS
133 (11)	106 (8.8)	89 (7.5)	N/A	442 (37)	N/A

**SPECIAL NOTE:** Use AR64516 Oil. First change oil after 50 hours of use. Then every 500 hours. This oil is specially formulated to provide correct lubrication properties for our pumps. **No** other oil is factory approved for these pumps.



**PARTS BREAKDOWN**



Pos.	Code	Description	Qty.	Pos.	Code	Description	Qty.	Legend			
1	960160	O-Ring	6	43	1780910	Motor flange	1	Ø 15			
2	1260162	Plug	6	44	620610	Screw	4	XMV2G10			
3	1269050	Complete valve	6	45	1780860	Hollow shaft	1	XMV2G15			
4	880830	O-Ring	6	46	1780430	Bushing	1	XMV2G22			
5	620301	Plug	1	47	1260250	Oil indicator	1	XMV2G25			
6	1780130	Support ring	3	48	1260430	Snap ring	1	<b>Repair Kits</b>			
7	1260130	Gasket	3	49	1780690	Disc	1	Water Seal	Pistons	Valve	Oil Seals
8	1780090	Piston guide	3	50	1140450	O-Ring	1	Kit 2741	Kit 2544	Kit 1864	Kit 2786
9	1780010	Pump body	1					Pos. Qty.	Pos. Qty.	Pos. Qty.	Pos. Qty.
10	1266740	Cap	1					7 3	21 3	3 6	10 1
11	1260790	Circlip	1					32 3	22 3	4 6	16 1
12	1780550	Snap ring	1					33 3	23 3		30 3
13	1780490	Bearing	1						24 3		41 1
14	880130	Oil cap	1						25 3		
15	1780050	Piston pin	3								
16	1780510	O-Ring	1								
17	1200430	Screw	6								
18	1789010	Complete cover	1								
19	1780040	Con rod	3								
20	1780060	Guiding piston	3								
21	480480	O-Ring	3								
22	1260091	Spacer disc	3								
23	1780070	Piston	3								
24	1260100	Piston washer	3								
25	1260110	Nut	3								
26	1380141	Base	2								
27	740290	O-Ring	3								
28	1980740	Plug 3/8" G	3								
29	1260470	Screw	4								
30	1260460	Seal	3								
31	1780100	Rear piston guide	3								
32	770260	O-Ring	3								
33	1260440	Gasket	3								
34	820361	Plug 1/2" G Brass	1								
35	180101	O-Ring	1								
36	1780020	Head	1								
37	1381550	Washer	8								
38	1322730	Screw	8								
39	1321190	Bearing	1								
40	1321080	Snap ring	1								
41	480671	Seal	1								
42	1789200	Pump head assembly	1								

Code	Description	Qty.
2776	Viton water seals Ø15	1

