

Plunger Pumps

FEATURING

MANIFOLD: High strength forged brass for long term use.

BOLTS: Eight 6mm grade 12.9.

PLUNGERS: A special thick solid ceramic for long life, strong durability and more resilience.

CRANKCASE: Precision die-cast, large cooling fins and anodized for maximum heat dissipation. Sight glass, fill and side and bottom drain plugs.

BEARINGS: Oversized for maximum life and load disbursement, needle bearing on the drive side and ball on the non-drive side. Each bearing is held in position on the crankshaft and crankcase by snap rings. This assures positive alignment and centering of the connecting rods and crankshaft in relation to the crankcase, it also eliminates the crankshaft from floating.

VALVES, SEATS, AND SPRINGS: Stainless steel with specially designed Ultra Form cages to provide extra long life and positive seating.

SEALS AND V-PACKINGS: Continuously lubricating for extended life.

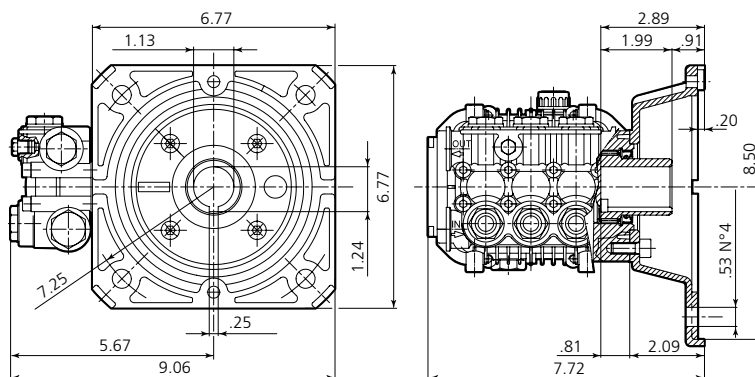
PLUNGER RODS: High strength stainless steel.

CONNECTING RODS: One piece special alloy aluminum based, oversized for maximum strength, load disbursement, and long life. Heavy pin area construction, for added load strength.

DIMENSIONS



XMA E version 1" 1/8 + F17
Hollow shaft pump ø 1" 1/8



SPECIFICATIONS

| MODEL | MAX GPM | MAX LMP | MAX PSI | MAX BAR | POWER EBHP | BORE DIA MM | STROKE MM | CRANKSHAFT ID STAMP | WEIGHT LBS. |
|----------------|---------|---------|---------|---------|------------|-------------|-----------|---------------------|-------------|
| XMA3G25E-F17 | 3.0 | 11.4 | 2500 | 170 | 5.0 | 15 | 13.2 | 3 | 15 |
| XMA3G30E-F17 | 3.0 | 11.4 | 3000 | 206 | 6.2 | 15 | 13.2 | 3 | 15 |
| XMA3.5G25E-F17 | 3.5 | 13.2 | 2500 | 170 | 5.5 | 15 | 15.4 | 1 | 15 |

Oil Capacity = 14.6 oz

Maximum Fluid Temperature = 140° F

Inlet Thread = 1/2" F

Discharge Thread = 3/8" F

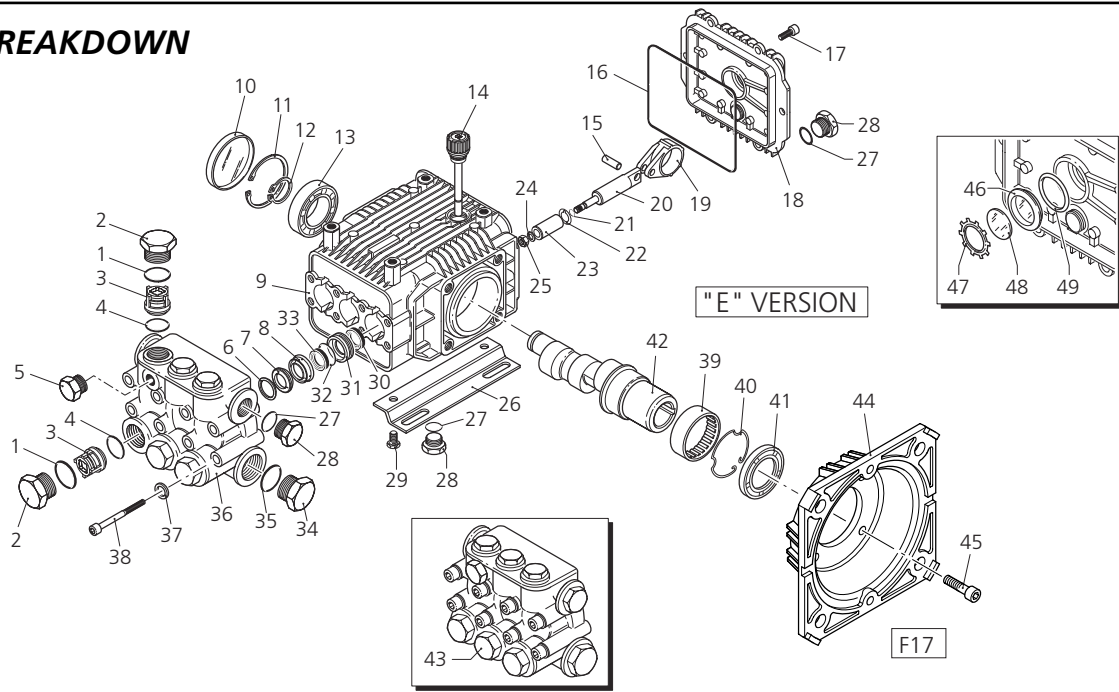
Torque Specifications Inch pounds (ft. lbs)

| HEAD | PISTON NUT | REAR COVER | SIDE COVER | VALVE CAP | CON RODS |
|----------|------------|------------|------------|-----------|----------|
| 133 (11) | 106 (8.8) | 89 (7.5) | N/A | 442 (37) | N/A |

SPECIAL NOTE: Use AR64516 Oil. First change oil after 50 hours of use. Then every 500 hours. This oil is specially formulated to provide correct lubrication properties for our pumps. **No** other oil is factory approved for these pumps.



PARTS BREAKDOWN



| Pos. | Code | Description | Qty. | Pos. | Code | Description | Qty. | Legend | | |
|------|---------|-----------------------|------|------|---------|--------------------|------|---------|-----------|---------|
| 1 | 960160 | O-Ring | 6 | 35 | 180101 | O-Ring | 1 | ∅ 15 | ∅ 15 | ∅ 18 |
| 2 | 1260162 | Plug | 6 | 36 | 1780020 | Head | 1 | For ○ | For □ | For ▼ |
| 3 | 1269050 | Complete valve | 6 | 37 | 1381550 | Washer | 8 | XMA3G25 | XMA3.5G22 | XMA4G20 |
| 4 | 880830 | O-Ring | 6 | 38 | 1322730 | Screw | 8 | XMA3G30 | XMA3.5G25 | |
| 5 | 620301 | Plug | 1 | 39 | 1321190 | Bearing | 1 | | | |
| 6 | 1780130 | Support ring ∅15 | ○□ 3 | 40 | 1321080 | Snap ring | 1 | | | |
| 7 | 1780140 | Support ring ∅18 | ▼ 3 | 41 | 480671 | Seal | 1 | | | |
| 8 | 1260130 | Gasket ∅15 | ○□ 3 | 42 | 1780300 | Hollow shaft | ○ 1 | | | |
| 9 | 1260220 | Gasket ∅18 | ▼ 3 | 43 | 1780290 | Hollow shaft | ▼ 1 | | | |
| 10 | 1780090 | Piston guide ∅15 | ○□ 3 | 44 | 1780950 | Hollow shaft | ▼ 1 | | | |
| 11 | 1780110 | Piston guide ∅18 | ▼ 3 | 45 | 1789201 | Pump head assembly | ○□ 1 | | | |
| 12 | 1780010 | Pump body | 1 | 46 | 1789202 | Pump head assembly | ▼ 1 | | | |
| 13 | 1266740 | Cap | 1 | 47 | 1380360 | Motor flange | 1 | | | |
| 14 | 1260790 | Circlip | 1 | 48 | 180030 | Screw | 4 | | | |
| 15 | 1780550 | Snap ring | 1 | 49 | 1260250 | Oil indicator | 1 | | | |
| 16 | 1780490 | Bearing | 1 | | 1260430 | Snap ring | 1 | | | |
| 17 | 880130 | Oil cap | 1 | | 1780690 | Disc | 1 | | | |
| 18 | 1780050 | Piston pin | 3 | | 1140450 | O-Ring | 1 | | | |
| 19 | 1780510 | O-Ring | 1 | | | | | | | |
| 20 | 1200430 | Screw | 6 | | | | | | | |
| 21 | 1789010 | Complete cover | 1 | | | | | | | |
| 22 | 1780710 | Con rod | 3 | | | | | | | |
| 23 | 1780060 | Guiding piston | 3 | | | | | | | |
| 24 | 480480 | O-Ring | 3 | | | | | | | |
| 25 | 1260091 | Spacer disc | 3 | | | | | | | |
| 26 | 1780070 | Piston ∅15 | 3 | | | | | | | |
| 26b | 1780080 | Piston ∅18 | 3 | | | | | | | |
| 26c | 1260100 | Piston washer | 3 | | | | | | | |
| 27 | 1260110 | Nut | 3 | | | | | | | |
| 28 | 1380141 | Base | 2 | | | | | | | |
| 29 | 2729 | 5/8" Rail Kit | 1 | | | | | | | |
| 30 | 2633H | 2-5/8" Rail Kit | 1 | | | | | | | |
| 31 | 740290 | O-Ring | 3 | | | | | | | |
| 32 | 1980740 | Plug 3/8" G | 3 | | | | | | | |
| 33 | 1260470 | Screw | 4 | | | | | | | |
| 34 | 1260460 | Seal | 3 | | | | | | | |
| | 1780100 | Rear piston guide ∅15 | ○□ 3 | | | | | | | |
| | 1780120 | Rear piston guide ∅18 | ▼ 3 | | | | | | | |
| | 770260 | O-Ring | 3 | | | | | | | |
| | 1260440 | Gasket ∅15 | ○□ 3 | | | | | | | |
| | 1260450 | Gasket ∅18 | ▼ 3 | | | | | | | |
| | 820361 | Plug 1/2" G Brass | 1 | | | | | | | |

| Legend | | |
|---------|-----------|---------|
| ∅ 15 | ∅ 15 | ∅ 18 |
| For ○ | For □ | For ▼ |
| XMA3G25 | XMA3.5G22 | XMA4G20 |
| XMA3G30 | XMA3.5G25 | |

| Repair Kits | | | |
|-------------------------|----------------------|----------------|--------------------|
| Water Seal Kit 2741 ∅15 | Pistons Kit 2544 ∅15 | Valve Kit 1864 | Oil Seals Kit 2787 |
| Kit 2747 ∅18 | Kit 2545 ∅18 | | |
| Pos. Qty. | Pos. Qty. | Pos. Qty. | Pos. Qty. |
| 7 3 | 21 3 | 3 6 | 10 1 |
| 32 3 | 22 3 | 4 6 | 16 1 |
| 33 3 | 23 3 | | 30 3 |
| | 24 3 | | 42 1 |
| | 25 3 | | |

| Support Rings | |
|---------------|--|
| Kit 2740 ∅15 | |
| Kit 2745 ∅18 | |
| Pos. Qty. | |
| 6 3 | |

| Special Parts | | |
|---------------|-----------------------|------|
| Code | Description | Qty. |
| 2776 | Viton water seals ∅15 | 1 |
| 2777 | Viton water seals ∅18 | 1 |



Plunger Pumps

FEATURING

MANIFOLD: High strength forged brass for long term use.

BOLTS: Eight 6mm grade 12.9.

PLUNGERS: A special thick solid ceramic for long life, strong durability and more resilience.

CRANKCASE: Precision die-cast, large cooling fins and anodized for maximum heat dissipation. Sight glass, fill and side and bottom drain plugs.

BEARINGS: Oversized for maximum life and load disbursement, needle bearing on the drive side and ball on the non-drive side. Each bearing is held in position on the crankshaft and crankcase by snap rings. This assures positive alignment and centering of the connecting rods and crankshaft in relation to the crankcase, it also eliminates the crankshaft from floating.

VALVES, SEATS, AND SPRINGS: Stainless steel with specially designed Ultra Form cages to provide extra long life and positive seating.

SEALS AND V-PACKINGS: Continuously lubricating for extended life.

PLUNGER RODS: High strength stainless steel.

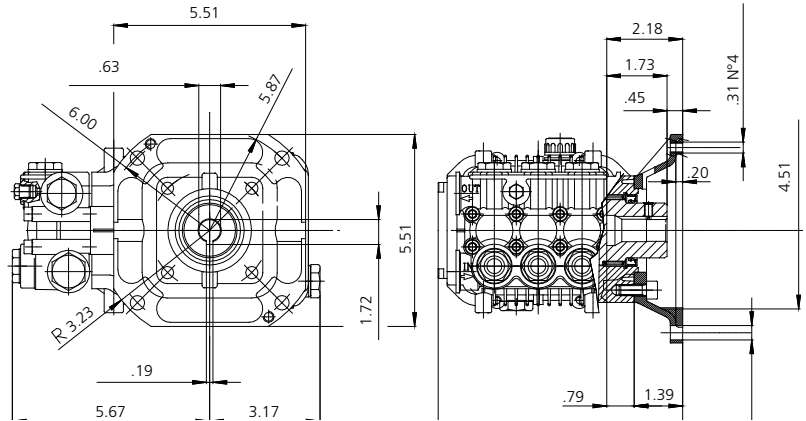
CONNECTING RODS: One piece special alloy aluminum based, oversized for maximum strength, load disbursement, and long life. Heavy pin area construction, for added load strength.

DIMENSIONS



XMA

E version 5/8 + F33
Hollow shaft pump ø 5/8



SPECIFICATIONS

| MODEL | MAX GPM | MAX LMP | MAX PSI | MAX BAR | POWER EBHP | BORE DIA MM | STROKE MM | CRANKSHAFT ID STAMP | WEIGHT LBS. |
|----------------|---------|---------|---------|---------|------------|-------------|-----------|---------------------|-------------|
| XMA2G15E-F33 | 2.11 | 8.0 | 1500 | 105 | 2.0 | 15 | 9.4 | 7 | 15 |
| XMA2G22E-F33 | 2.11 | 8.0 | 2200 | 150 | 3.0 | 15 | 9.4 | 7 | 15 |
| XMA2.5G18E-F33 | 2.5 | 9.5 | 1800 | 120 | 3.0 | 15 | 10.6 | 5 | 15 |
| XMA3G18E-F33 | 3.0 | 11.4 | 1800 | 120 | 4.0 | 15 | 13.2 | 3 | 15 |

Oil Capacity = 14.6 oz

Maximum Fluid Temperature = 140° F

Inlet Thread = 1/2" F

Discharge Thread = 3/8" F

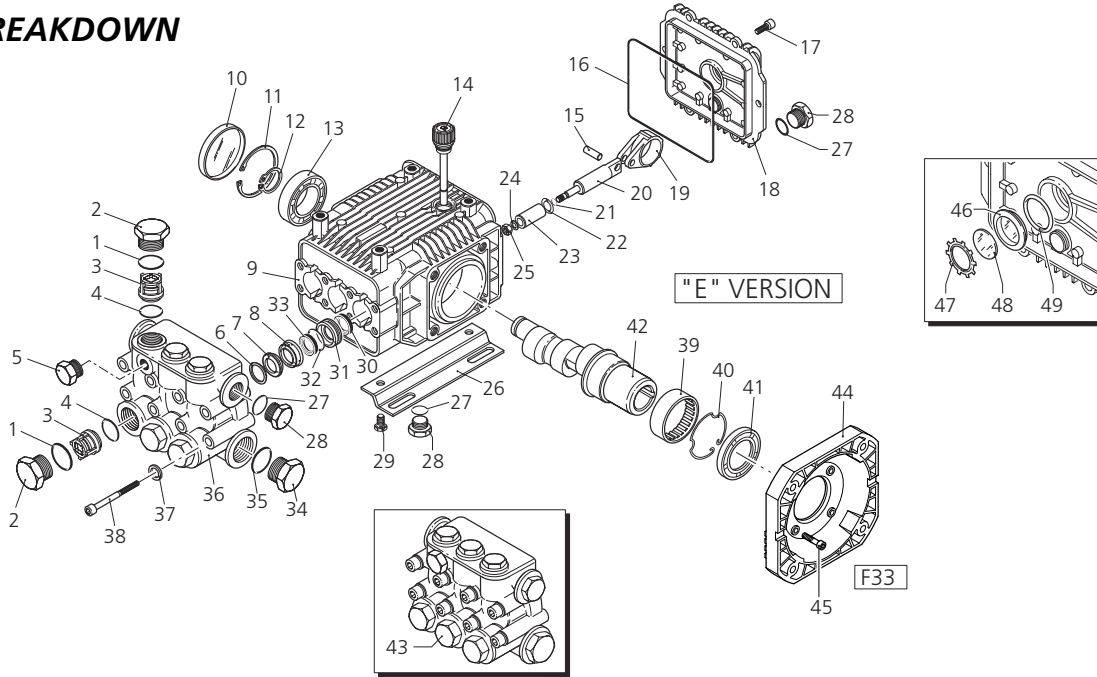
Torque Specifications Inch pounds (ft. lbs)

| HEAD | PISTON NUT | REAR COVER | SIDE COVER | VALVE CAP | CON RODS |
|----------|------------|------------|------------|-----------|----------|
| 133 (11) | 106 (8.8) | 89 (7.5) | N/A | 442 (37) | N/A |

SPECIAL NOTE: Use AR64516 Oil. First change oil after 50 hours of use. Then every 500 hours. This oil is specially formulated to provide correct lubrication properties for our pumps. **No** other oil is factory approved for these pumps.



PARTS BREAKDOWN



| Pos. | Code | Description | Qty. | Pos. | Code | Description | Qty. | Legend | | |
|------|---------|-------------------|------|------|---------|--------------------|------|---------|-----------|---------|
| 1 | 960160 | O-Ring | 6 | 43 | 1789201 | Pump head assembly | 1 | Ø 15 | Ø 15 | Ø 15 |
| 2 | 1260162 | Plug | 6 | 44 | 1780910 | Motor flange | 1 | XMA2G10 | XMA2.5G18 | XMA3G18 |
| 3 | 1269050 | Complete valve | 6 | 45 | 620610 | Screw | 4 | XMA2G15 | | |
| 4 | 880830 | O-Ring | 6 | 46 | 1260250 | Oil indicator | 1 | XMA2G22 | | |
| 5 | 620301 | Plug | 1 | 47 | 1260430 | Snap ring | 1 | | | |
| 6 | 1780130 | Support ring | 3 | 48 | 1780690 | Disc | 1 | | | |
| 7 | 1260130 | Gasket | 3 | 49 | 1140450 | O-Ring | 1 | | | |
| 8 | 1780090 | Piston guide | 3 | | | | | | | |
| 9 | 1780010 | Pump body | 1 | | | | | | | |
| 10 | 1266740 | Cap | 1 | | | | | | | |
| 11 | 1260790 | Circlip | 1 | | | | | | | |
| 12 | 1780550 | Snap ring | 1 | | | | | | | |
| 13 | 1780490 | Bearing | 1 | | | | | | | |
| 14 | 880130 | Oil cap | 1 | | | | | | | |
| 15 | 1780050 | Piston pin | 3 | | | | | | | |
| 16 | 1780510 | O-Ring | 1 | | | | | | | |
| 17 | 1200430 | Screw | 6 | | | | | | | |
| 18 | 1789010 | Complete cover | 1 | | | | | | | |
| 19 | 1780040 | Con rod | 3 | | | | | | | |
| 20 | 1780060 | Guiding piston | 3 | | | | | | | |
| 21 | 480480 | O-Ring | 3 | | | | | | | |
| 22 | 1260091 | Spacer disc | 3 | | | | | | | |
| 23 | 1780070 | Piston | 3 | | | | | | | |
| 24 | 1260100 | Piston washer | 3 | | | | | | | |
| 25 | 1260110 | Nut | 3 | | | | | | | |
| 26 | 1380141 | Base | 2 | | | | | | | |
| 27 | 740290 | O-Ring | 3 | | | | | | | |
| 28 | 1980740 | Plug 3/8" G | 3 | | | | | | | |
| 29 | 1260470 | Screw | 4 | | | | | | | |
| 30 | 1260460 | Seal | 3 | | | | | | | |
| 31 | 1780100 | Rear piston guide | 3 | | | | | | | |
| 32 | 770260 | O-Ring | 3 | | | | | | | |
| 33 | 1260440 | Gasket | 3 | | | | | | | |
| 34 | 820361 | Plug 1/2" G Brass | 1 | | | | | | | |
| 35 | 180101 | O-Ring | 1 | | | | | | | |
| 36 | 1780020 | Head | 1 | | | | | | | |
| 37 | 1381550 | Washer | 8 | | | | | | | |
| 38 | 1322730 | Screw | 8 | | | | | | | |
| 39 | 1321190 | Bearing | 1 | | | | | | | |
| 40 | 1321080 | Snap ring | 1 | | | | | | | |
| 41 | 480671 | Seal | 1 | | | | | | | |
| 42 | 1781050 | Hollow shaft | 1 | | | | | | | |

| Repair Kits | | | | | | | |
|---------------------|------|------------------|------|----------------|------|--------------------|------|
| Water Seal Kit 2741 | | Pistons Kit 2544 | | Valve Kit 1864 | | Oil Seals Kit 2787 | |
| Pos. | Qty. | Pos. | Qty. | Pos. | Qty. | Pos. | Qty. |
| 7 | 3 | 21 | 3 | 3 | 6 | 10 | 1 |
| 32 | 3 | 22 | 3 | 4 | 6 | 16 | 1 |
| 33 | 3 | 23 | 3 | | | 30 | 3 |
| | | 24 | 3 | | | 41 | 1 |
| | | 25 | 3 | | | | |

| Support Rings Kit 2740 | |
|------------------------|------|
| Pos. | Qty. |
| 6 | 3 |

| Special Parts | | |
|---------------|-----------------------|------|
| Code | Description | Qty. |
| 2776 | Viton water seals Ø15 | 1 |



Plunger Pumps

FEATURING

MANIFOLD: High strength forged brass for long term use.

BOLTS: Eight 6mm grade 12.9.

PLUNGERS: A special thick solid ceramic for long life, strong durability and more resilience.

CRANKCASE: Precision die-cast, large cooling fins and anodized for maximum heat dissipation. Sight glass, fill and side and bottom drain plugs.

BEARINGS: Oversized for maximum life and load disbursement, needle bearing on the drive side and ball on the non-drive side. Each bearing is held in position on the crankshaft and crankcase by snap rings. This assures positive alignment and centering of the connecting rods and crankshaft in relation to the crankcase, it also eliminates the crankshaft from floating.

VALVES, SEATS, AND SPRINGS: Stainless steel with specially designed Ultra Form cages to provide extra long life and positive seating.

SEALS AND V-PACKINGS: Continuously lubricating for extended life.

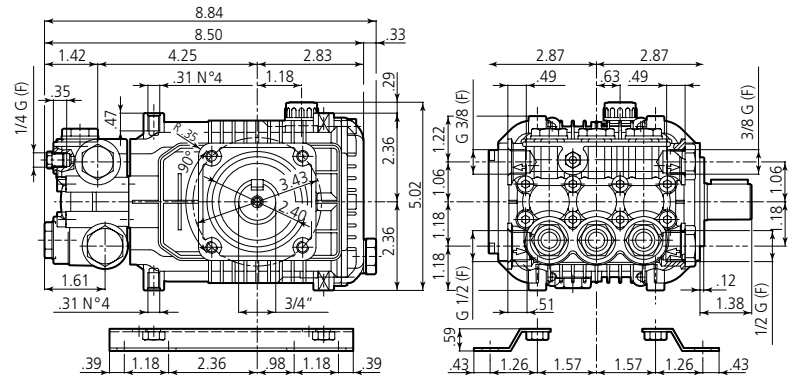
PLUNGER RODS: High strength stainless steel.

CONNECTING RODS: One piece special alloy aluminum based, oversized for maximum strength, load disbursement, and long life. Heavy pin area construction, for added load strength.

DIMENSIONS



XMA N version Solid shaft pump ø 3/4"



SPECIFICATIONS

| MODEL | MAX GPM | MAX LMP | MAX PSI | MAX BAR | POWER EBHP | BORE DIA MM | STROKE MM | CRANKSHAFT ID STAMP | WEIGHT LBS. |
|------------|---------|---------|---------|---------|------------|-------------|-----------|---------------------|-------------|
| XMA3.5G22N | 3.5 | 13.2 | 2200 | 150 | 5.0 | 15 | 15.4 | 1 | 14 |

Oil Capacity = 14.6 oz

Maximum Fluid Temperature = 140° F

Inlet Thread = 1/2" F

Discharge Thread = 3/8" F

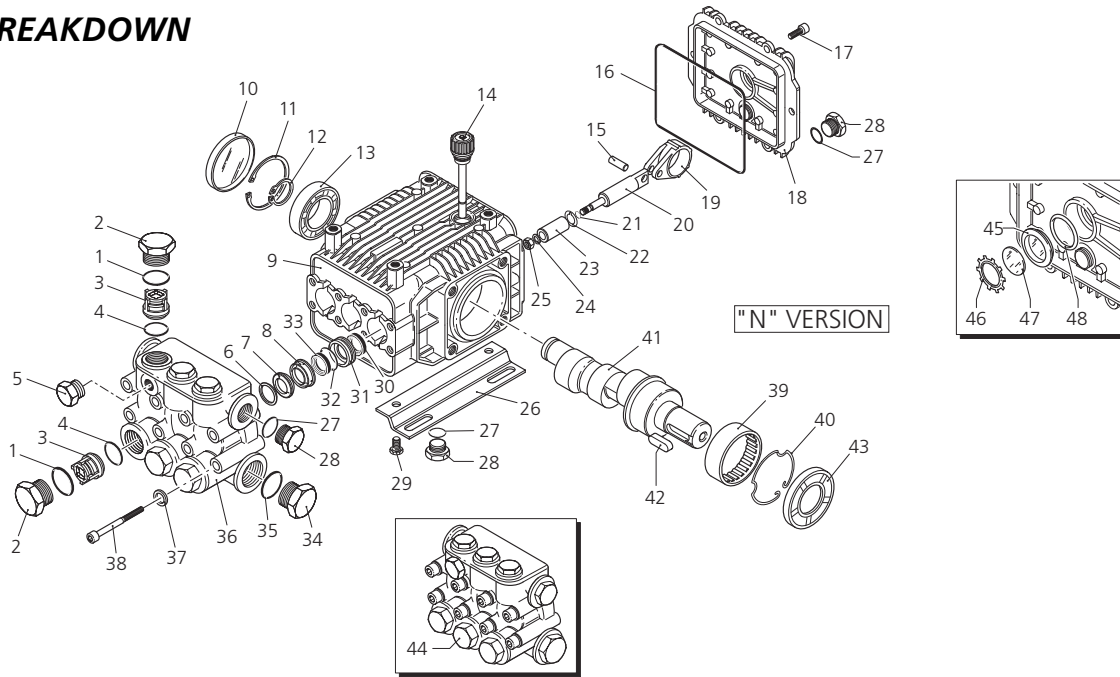
Torque Specifications Inch pounds (ft. lbs)

| HEAD | PISTON NUT | REAR COVER | SIDE COVER | VALVE CAP | CON RODS |
|----------|------------|------------|------------|-----------|----------|
| 133 (11) | 106 (8.8) | 89 (7.5) | N/A | 442 (37) | N/A |

SPECIAL NOTE: Use AR64516 Oil. First change oil after 50 hours of use. Then every 500 hours. This oil is specially formulated to provide correct lubrication properties for our pumps. **No** other oil is factory approved for these pumps.



PARTS BREAKDOWN



| Pos. | Code | Description | Qty. |
|------|---------|-------------------|------|
| 1 | 960160 | O-Ring | 6 |
| 2 | 1260162 | Plug | 6 |
| 3 | 1269050 | Complete valve | 6 |
| 4 | 880830 | O-Ring | 6 |
| 5 | 620301 | Plug | 1 |
| 6 | 1780130 | Support ring | 3 |
| 7 | 1260130 | Gasket | 3 |
| 8 | 1780090 | Piston guide | 3 |
| 9 | 1780010 | Pump body | 1 |
| 10 | 1266740 | Cap | 1 |
| 11 | 1260790 | Circlip | 1 |
| 12 | 1780550 | Snap ring | 1 |
| 13 | 1780490 | Bearing | 1 |
| 14 | 880130 | Oil cap | 1 |
| 15 | 1780050 | Piston pin | 3 |
| 16 | 1780510 | O-Ring | 1 |
| 17 | 1200430 | Screw | 6 |
| 18 | 1789010 | Complete cover | 1 |
| 19 | 1780040 | Con rod | 3 |
| 20 | 1780060 | Guiding piston | 3 |
| 21 | 480480 | O-Ring | 3 |
| 22 | 1260091 | Spacer disc | 3 |
| 23 | 1780070 | Piston | 3 |
| 24 | 1260100 | Piston washer | 3 |
| 25 | 1260110 | Nut | 3 |
| 26 | 1380141 | Base | 2 |
| 26b | 2729 | 5/8" Rail Kit | 1 |
| 26c | 2633H | 2-5/8" Rail Kit | 1 |
| 27 | 740290 | O-Ring | 3 |
| 28 | 1980740 | Plug 3/8" G | 3 |
| 29 | 1260470 | Screw | 4 |
| 30 | 1260460 | Seal | 3 |
| 31 | 1780100 | Rear piston guide | 3 |
| 32 | 770260 | O-Ring | 3 |
| 33 | 1260440 | Gasket | 3 |
| 34 | 820361 | Plug 1/2" G Brass | 1 |
| 35 | 180101 | O-Ring | 1 |
| 36 | 1780020 | Head | 1 |
| 37 | 1381550 | Washer | 8 |
| 38 | 1322730 | Screw | 8 |
| 39 | 1321190 | Bearing | 1 |
| 40 | 1321080 | Snap ring | 1 |

| Pos. | Code | Description | Qty. |
|------|---------|--------------------|------|
| 41 | 1780820 | Crankshaft | 1 |
| 42 | 1380520 | Key | 1 |
| 43 | 1260750 | Seal | 1 |
| 44 | 1789201 | Pump head assembly | 1 |
| 45 | 1260250 | Oil indicator | 1 |
| 46 | 1260430 | Snap ring | 1 |
| 47 | 1780690 | Disc | 1 |
| 48 | 1140450 | O-Ring | 1 |

Legend

Ø 15
XMA3.5G22

Repair Kits

| Water Seal Kit 2741 | | Pistons Kit 2544 | | Valve Kit 1864 | | Oil Seals Kit 2786 | |
|---------------------|------|------------------|------|----------------|------|--------------------|------|
| Pos. | Qty. | Pos. | Qty. | Pos. | Qty. | Pos. | Qty. |
| 7 | 3 | 21 | 3 | 3 | 6 | 10 | 1 |
| 32 | 3 | 22 | 3 | 4 | 6 | 16 | 1 |
| 33 | 3 | 23 | 3 | | | 30 | 3 |
| | | 24 | 3 | | | 43 | 1 |
| | | 25 | 3 | | | | |

Support Rings
Kit 2740

| Pos. | Qty. |
|------|------|
| 6 | 3 |

Special Parts

| Code | Description | Qty. |
|------|-----------------------|------|
| 2776 | Viton water seals Ø15 | 1 |



Plunger Pumps

FEATURING

MANIFOLD: High strength forged brass for long term use.

BOLTS: Eight 6mm grade 12.9.

PLUNGERS: A special thick solid ceramic for long life, strong durability and more resilience.

CRANKCASE: Precision die-cast, large cooling fins and anodized for maximum heat dissipation. Sight glass, fill and side and bottom drain plugs.

BEARINGS: Oversized for maximum life and load disbursement, needle bearing on the drive side and ball on the non-drive side. Each bearing is held in position on the crankshaft and crankcase by snap rings. This assures positive alignment and centering of the connecting rods and crankshaft in relation to the crankcase, it also eliminates the crankshaft from floating.

VALVES, SEATS, AND SPRINGS: Stainless steel with specially designed Ultra Form cages to provide extra long life and positive seating.

SEALS AND V-PACKINGS: Continuously lubricating for extended life.

PLUNGER RODS: High strength stainless steel.

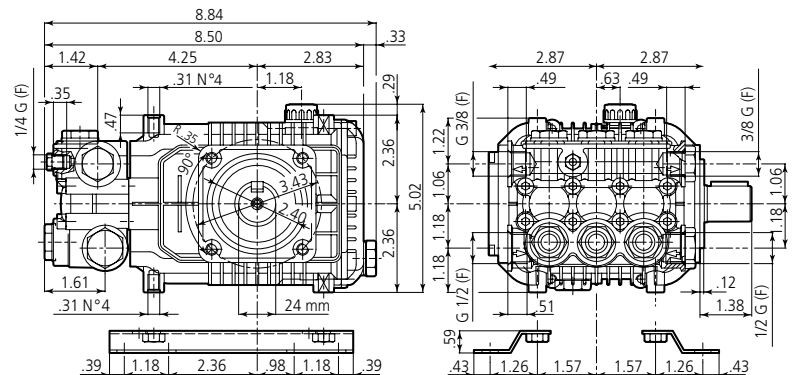
CONNECTING RODS: One piece special alloy aluminum based, oversized for maximum strength, load disbursement, and long life. Heavy pin area construction, for added load strength.

DIMENSIONS



XMA

N version
Solid shaft pump ø 24 mm



SPECIFICATIONS

| MODEL | MAX GPM | MAX LMP | MAX PSI | MAX BAR | POWER EBHP | BORE DIA MM | STROKE MM | CRANKSHAFT ID STAMP | WEIGHT LBS. |
|------------|---------|---------|---------|---------|------------|-------------|-----------|---------------------|-------------|
| XMA3G25N | 3.0 | 11.4 | 2500 | 170 | 5.0 | 15 | 13.2 | 3 | 14 |
| XMA3.5G22N | 3.5 | 13.2 | 2200 | 150 | 5.0 | 15 | 15.4 | 1 | 14 |
| XMA3.5G25N | 3.5 | 13.2 | 2500 | 170 | 5.5 | 15 | 15.4 | 1 | 14 |
| XMA4G20N | 4.0 | 15.1 | 2000 | 140 | 5.5 | 18 | 13.2 | 3 | 14 |

Oil Capacity = 14.6 oz

Maximum Fluid Temperature = 140° F

Inlet Thread = 1/2" F

Discharge Thread = 3/8" F

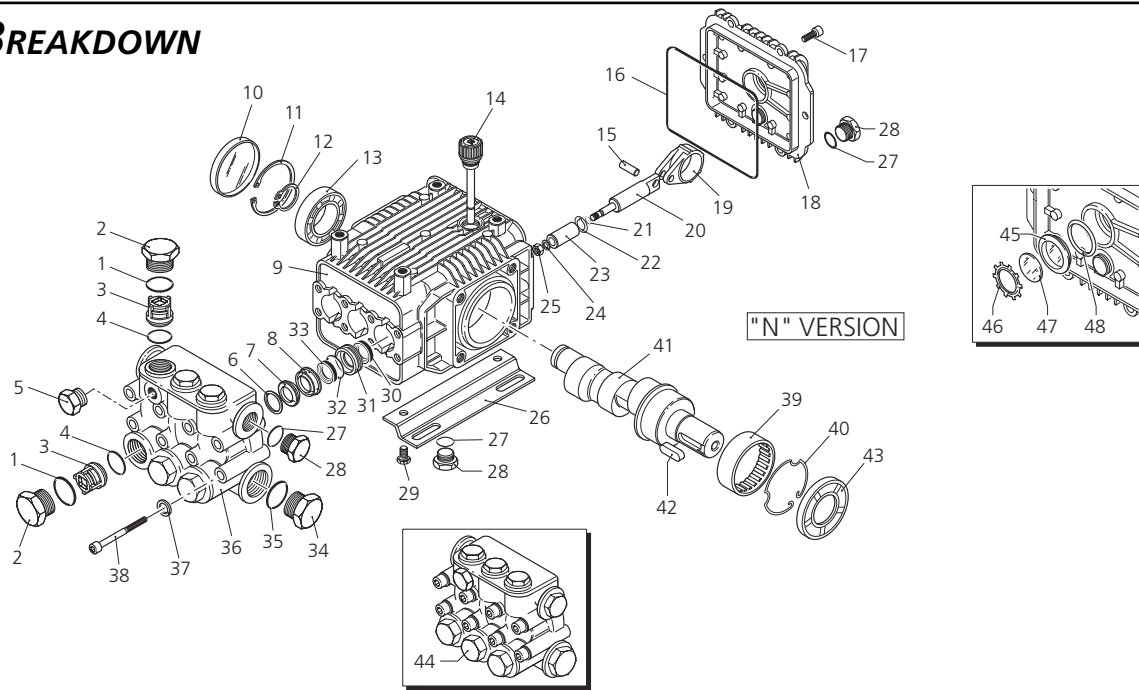
Torque Specifications Inch pounds (ft. lbs)

| HEAD | PISTON NUT | REAR COVER | SIDE COVER | VALVE CAP | CON RODS |
|----------|------------|------------|------------|-----------|----------|
| 133 (11) | 106 (8.8) | 89 (7.5) | N/A | 442 (37) | N/A |

SPECIAL NOTE: Use AR64516 Oil. First change oil after 50 hours of use. Then every 500 hours. This oil is specially formulated to provide correct lubrication properties for our pumps. **No** other oil is factory approved for these pumps.



PARTS BREAKDOWN



| Pos. | Code | Description | Qty. | Pos. | Code | Description | Qty. | Legend | | |
|------|---------|-----------------------|------|------|---------|--------------------|------|---------|-----------|---------|
| 1 | 960160 | O-Ring | 6 | 35 | 180101 | O-Ring | 1 | ∅ 15 | ∅ 15 | ∅ 18 |
| 2 | 1260162 | Plug | 6 | 36 | 1780020 | Head | 1 | For ○ | For □ | For ▼ |
| 3 | 1269050 | Complete valve | 6 | 37 | 1381550 | Washer | 8 | XMA3G25 | XMA3.5G22 | XMA4G20 |
| 4 | 880830 | O-Ring | 6 | 38 | 1322730 | Screw | 8 | | XMA3.5G25 | |
| 5 | 620301 | Plug | 1 | 39 | 1321190 | Bearing | 1 | | | |
| 6 | 1780130 | Support ring ∅15 | ○□ 3 | 40 | 1321080 | Snap ring | 1 | | | |
| 7 | 1780140 | Support ring ∅18 | ▼ 3 | 41 | 1780170 | Crankshaft | ○ 1 | | | |
| 8 | 1260130 | Gasket ∅15 | ○□ 3 | 42 | 1780150 | Crankshaft | □ 1 | | | |
| 9 | 1260220 | Gasket ∅18 | ▼ 3 | 43 | 1780180 | Crankshaft | ▼ 1 | | | |
| 10 | 1780090 | Piston guide ∅15 | ○□ 3 | 44 | 1380520 | Key | 1 | | | |
| 11 | 1780110 | Piston guide ∅18 | ▼ 3 | 45 | 1260750 | Seal | 1 | | | |
| 12 | 1780010 | Pump body | 1 | 46 | 1789201 | Pump head assembly | ○□ 1 | | | |
| 13 | 1266740 | Cap | 1 | 47 | 1789202 | Pump head assembly | ▼ 1 | | | |
| 14 | 1260790 | Circlip | 1 | 48 | 1260250 | Oil indicator | 1 | | | |
| 15 | 1780550 | Snap ring | 1 | 49 | 1260430 | Snap ring | 1 | | | |
| 16 | 1780490 | Bearing | 1 | 50 | 1780690 | Disc | 1 | | | |
| 17 | 880130 | Oil cap | 1 | 51 | 1140450 | O-Ring | 1 | | | |
| 18 | 1780050 | Piston pin | 3 | | | | | | | |
| 19 | 1780510 | O-Ring | 1 | | | | | | | |
| 20 | 1200430 | Screw | 6 | | | | | | | |
| 21 | 1789010 | Complete cover | 1 | | | | | | | |
| 22 | 1780040 | Con rod | 3 | | | | | | | |
| 23 | 1780060 | Guiding piston | 3 | | | | | | | |
| 24 | 480480 | O-Ring | 3 | | | | | | | |
| 25 | 1260091 | Spacer disc | 3 | | | | | | | |
| 26 | 1780070 | Piston ∅15 | ○□ 3 | | | | | | | |
| 26b | 1780080 | Piston ∅18 | ▼ 3 | | | | | | | |
| 26c | 1260100 | Piston washer | 3 | | | | | | | |
| 27 | 1260110 | Nut | 3 | | | | | | | |
| 28 | 1380141 | Base | 2 | | | | | | | |
| 29 | 7729 | 5/8" Rail Kit | 1 | | | | | | | |
| 30 | 2633H | 2-5/8" Rail Kit | 1 | | | | | | | |
| 31 | 740290 | O-Ring | 3 | | | | | | | |
| 32 | 1980740 | Plug 3/8" G | 3 | | | | | | | |
| 33 | 1260470 | Screw | 4 | | | | | | | |
| 34 | 1260460 | Seal | 3 | | | | | | | |
| 35 | 1780100 | Rear piston guide ∅15 | ○□ 3 | | | | | | | |
| 36 | 1780120 | Rear piston guide ∅18 | ▼ 3 | | | | | | | |
| 37 | 770260 | O-Ring | 3 | | | | | | | |
| 38 | 1260440 | Gasket ∅15 | ○□ 3 | | | | | | | |
| 39 | 1260450 | Gasket ∅18 | ▼ 3 | | | | | | | |
| 40 | 820361 | Plug 1/2" G Brass | 1 | | | | | | | |

| Legend | | |
|---------|-----------|---------|
| ∅ 15 | ∅ 15 | ∅ 18 |
| For ○ | For □ | For ▼ |
| XMA3G25 | XMA3.5G22 | XMA4G20 |
| | XMA3.5G25 | |

| Repair Kits | | | |
|-------------------------|----------------------|----------------|--------------------|
| Water Seal Kit 2741 ∅15 | Pistons Kit 2544 ∅15 | Valve Kit 1864 | Oil Seals Kit 2786 |
| Water Seal Kit 2747 ∅18 | Pistons Kit 2545 ∅18 | | |
| Pos. Qty. | Pos. Qty. | Pos. Qty. | Pos. Qty. |
| 7 3 | 21 3 | 3 6 | 10 1 |
| 32 3 | 22 3 | 4 6 | 16 1 |
| 33 3 | 23 3 | | 30 3 |
| | 24 3 | | 43 1 |
| | 25 3 | | |

| Support Rings | |
|---------------|--|
| Kit 2740 ∅15 | |
| Kit 2745 ∅18 | |
| Pos. Qty. | |
| 6 3 | |

| Special Parts | | |
|---------------|-----------------------|------|
| Code | Description | Qty. |
| 2776 | Viton water seals ∅15 | 1 |
| 2777 | Viton water seals ∅18 | 1 |

