

Plunger Pumps

FEATURING

MANIFOLD: High strength 316L Stainless Steel to insure long term use.

BOLTS: 304L stainless steel.

PLUNGERS: A special ultra thick solid ceramic for long life, strong durability and more resilience.

CRANKCASE: Precision die-cast, large cooling fins and special anticorrosion finish. Both side and rear cover sight glass.

BEARINGS: Premium SKF tapered roller bearings that provide extra load support, smoother and lower crankcase running temperatures and over all extended pump life.

VALVES, SEATS, AND SPRINGS: Stainless steel with specially designed cages to provide seating and extended valve life.

SEALS AND V-PACKINGS: Viton are continuously lubricating for extended life. SPL plunger retainers.

OIL SEALS: Triple lipped and spring loaded for greater durability and extended life..

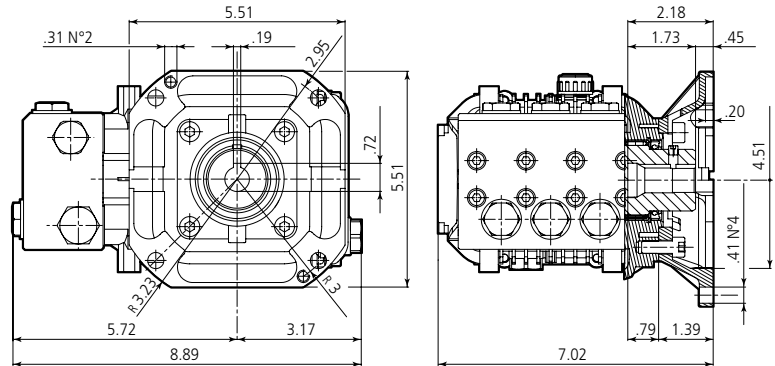
PLUNGER RODS: High strength stainless steel.

CONNECTING RODS: One piece special alloy bronze for higher pressures, oversized for maximum strength, load disbursement, and long life. Heavy pin area construction.

DIMENSIONS



XMA-SS E version + F33
Hollow shaft pump ø 5/8"



SPECIFICATIONS

| MODEL | MAX GPM | MAX LMP | MAX PSI | MAX BAR | POWER EBHP | BORE DIA MM | STROKE MM | CRANKSHAFT ID STAMP | WEIGHT LBS. |
|------------------|---------|---------|---------|---------|------------|-------------|-----------|---------------------|-------------|
| XMASS0.5G15E-F33 | 0.5 | 1.9 | 1500 | 105 | 0.05 | 15 | 2.2 | 13 | 17 |
| XMASS2.5G15E-F33 | 2.5 | 9.5 | 1500 | 105 | 2.60 | 15 | 10.6 | 5 | 17 |
| XMASS3G15E-F33 | 3.0 | 11.4 | 1500 | 105 | 3.10 | 15 | 13.2 | 6 | 17 |

Oil Capacity = 14.6 oz

Maximum Fluid Temperature = 140° F

Inlet Thread = 1/2" F

Discharge Thread = 3/8" F

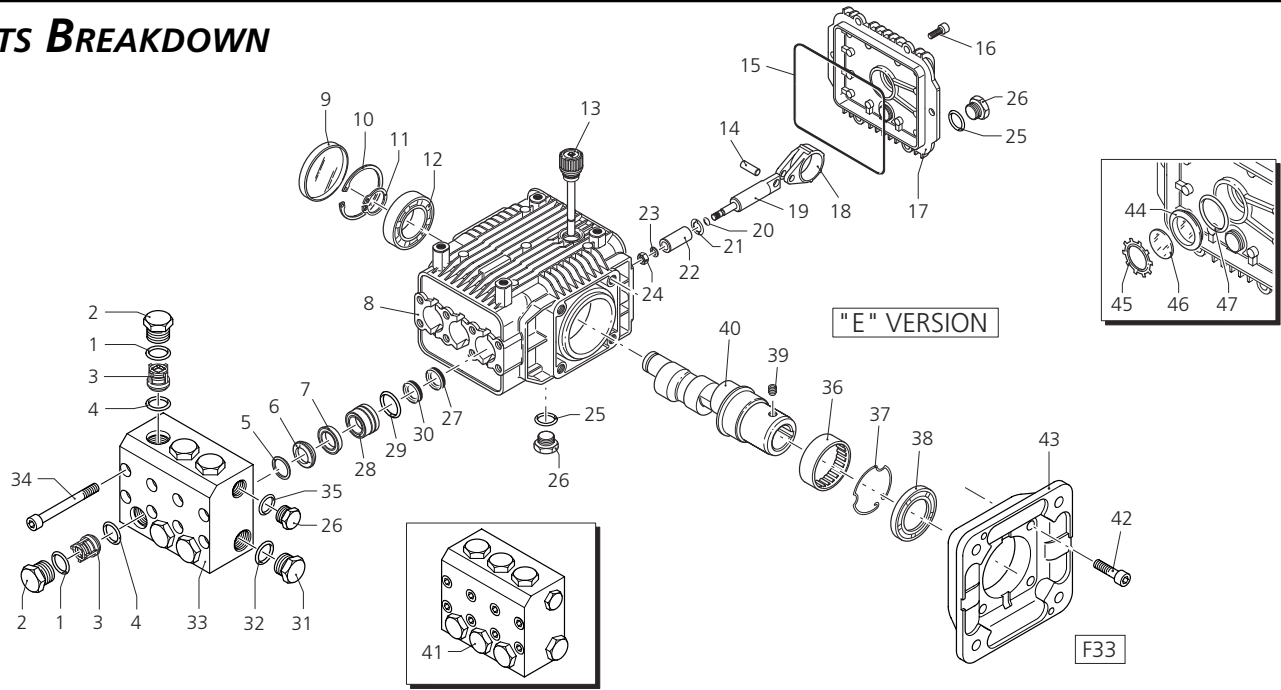
Torque Specifications Inch pounds (ft. lbs)

| HEAD | PISTON NUT | REAR COVER | SIDE COVER | VALVE CAP | CON RODS |
|----------|------------|------------|------------|-----------|----------|
| 80 (6.6) | 89 (7.5) | 80 (6.6) | N/A | 442 (37) | N/A |

SPECIAL NOTE: Use AR64516 Oil. First change oil after 50 hours of use. Then every 500 hours. This oil is specially formulated to provide correct lubrication properties for our pumps. **No** other oil is factory approved for these pumps.



PARTS BREAKDOWN



| Pos. | Code | Description | Qty. |
|------|---------|-------------------|------|
| 1 | 960161 | O-Ring | 6 |
| 2 | 2580031 | Plug | 6 |
| 3 | 2589050 | Complete valve | 6 |
| 4 | 880831 | O-Ring | 6 |
| 5 | 1780130 | Support ring | 3 |
| 6 | 1260131 | Gasket | 3 |
| 7 | 1781030 | Piston guide | 3 |
| 8 | 2580010 | Pump body | 1 |
| 9 | 1266740 | Cap | 1 |
| 10 | 1260790 | Circlip | 1 |
| 11 | 1780550 | Snap ring | 1 |
| 12 | 1780490 | Bearing | 1 |
| 13 | 880130 | Oil cap | 1 |
| 14 | 1780050 | Piston pin | 3 |
| 15 | 1780510 | O-Ring | 1 |
| 16 | 680560 | Screw | 6 |
| 17 | 2349010 | Complete cover | 1 |
| 18 | 1780710 | Bronze con rod | 3 |
| 19 | 2580070 | Guiding piston | 3 |
| 20 | 480482 | O-Ring | 3 |
| 21 | 2580120 | Spacer disc | 3 |
| 22 | 1780070 | Piston | 3 |
| 23 | 2340200 | Piston washer | 3 |
| 24 | 2580110 | Nut | 3 |
| 25 | 740290 | O-Ring | 2 |
| 26 | 2340350 | Plug 3/8" G | 3 |
| 27 | 1260460 | Seal | 3 |
| 28 | 2580050 | Rear piston guide | 3 |
| 29 | 770261 | O-Ring | 3 |
| 30 | 1260441 | Gasket | 3 |
| 31 | 2340360 | Plug 1/2" G | 1 |
| 32 | 180102 | O-Ring | 1 |
| 33 | 2580080 | Pump head | 1 |
| 34 | 2580020 | Pump head | 1 |
| 35 | 2580090 | Screw | 8 |
| 36 | 740291 | O-Ring | 1 |
| 37 | 1321190 | Bearing | 1 |
| 38 | 1321080 | Snap ring | 1 |
| 39 | 480671 | Seal | 1 |
| 40 | 820440 | Grub screw | 1 |

| Pos. | Code | Description | Qty. |
|------|---------|-----------------------|------|
| 40 | 1781170 | Hollow shaft | 1 |
| 41 | 1781180 | Hollow shaft | 1 |
| 42 | 1780990 | Hollow shaft | 1 |
| 43 | 2589200 | Pump head assembly | 1 |
| 44 | 2589201 | Pump head assembly | 1 |
| 45 | 180030 | Screw | 4 |
| 46 | 1780910 | Electric motor flange | 1 |
| 47 | 1260250 | Oil indicator | 1 |
| 48 | 1260430 | Snap ring | 1 |
| 49 | 1780690 | Disc | 1 |
| 50 | 1140450 | O-Ring | 1 |

Legend

| | | |
|--------------|--------------|------------|
| Ø 15 | Ø 15 | Ø 15 |
| For ○ | For □ | For ▼ |
| XMA-SS0.5G15 | XMA-SS2.5G15 | XMA-SS3G15 |

Repair Kits

| Water Seal Kit 2644 | | Pistons Kit 2645 | | Valve Kit 2631 | | Oil Seals Kit 2787 | |
|---------------------|------|------------------|------|----------------|------|--------------------|------|
| Pos. | Qty. | Pos. | Qty. | Pos. | Qty. | Pos. | Qty. |
| 6 | 3 | 20 | 3 | 3 | 6 | 9 | 1 |
| 7 | 3 | 21 | 3 | 4 | 6 | 15 | 1 |
| 29 | 3 | 22 | 3 | | | 27 | 3 |
| 30 | 3 | 23 | 3 | | | 38 | 1 |
| | | 24 | 3 | | | | |

Support Rings
Kit 2740

| Pos. | Qty. |
|------|------|
| 5 | 3 |

