

Plunger Pumps

FEATURING

MANIFOLD: High strength forged brass or nickel plated for long term use.

BOLTS: Eight 8mm grade 8.8.

PLUNGERS: A special thick solid ceramic for long life, strong durability and more resilience.

CRANKCASE: Precision die-cast, large cooling fins and anodized for maximum heat dissipation. Sight glass, fill and side and bottom drain plugs.

BEARINGS: Oversized tapered roller bearing for maximum life and load distribution.

BEARINGS SUPPORTS: Precision die-cast and machined to assure concentricity and alignment.

VALVES, SEATS, AND SPRINGS: Stainless steel with specially designed Ultra Form cages to provide long life and positive seating.

SEALS AND V-PACKINGS: Continuously lubricating for extended life.

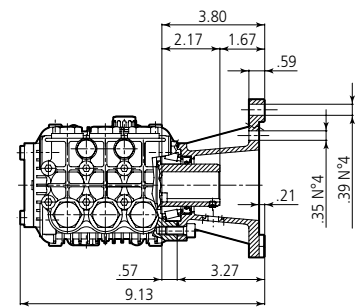
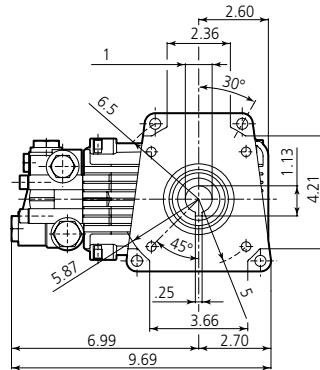
PLUNGER RODS: Stainless steel construction for strength, no plating to scrape off, back-up and o-ring plunger sealing system.

CONNECTING RODS: One piece special alloy aluminum or bronze for higher pressure, oversized for maximum strength, load disbursement, and long life. Heavy pin area construction, for added load strength.

DIMENSIONS



RKV D version + F24
Hollow shaft pump ø 1"



SPECIFICATIONS

MODEL	MAX GPM	MAX LMP	MAX PSI	MAX BAR	POWER EBHP	BORE DIA MM	STROKE MM	CRANKSHAFT ID STAMP	WEIGHT LBS.
RKV3.5G30AD-F24	3.5	13.2	3000	205	7.5	18	6.2	9	21
RKV3.5G35D-F24	3.5	13.2	3500	240	8.4	18	6.2	9	21
RKV3.5G40HD-F24	3.5	13.2	4000	275	10.0	18	6.2	9	21
RKV4G30AD-F24	4.0	15.1	3000	205	7.5	18	7.0	8	21
RKV4G32D-F24	4.0	15.1	3200	220	7.5	18	7.0	8	21
RKV4G35HD-F24	4.0	15.1	3500	240	7.5	18	7.0	8	21
RKV4G40HD-F24	4.0	15.1	4000	275	11.0	18	7.0	8	21
RKV4.5G22D-F24	4.5	17.0	2200	150	12.0	18	8.0	7	21
RKV4.5G40HD-F24	4.5	17.0	4000	275	12.0	18	8.0	7	21
RKV5G40HD-F24	5.0	18.3	4000	275	13.7	18	8.6	11	21
RKV5.5G40HD-F24	5.5	20.8	4000	275	15.0	18	9.8	6	21

Oil Capacity = 15.3 oz

Maximum Fluid Temperature = 140° F

Inlet Thread = 1/2" F

Discharge Thread = 3/8" F

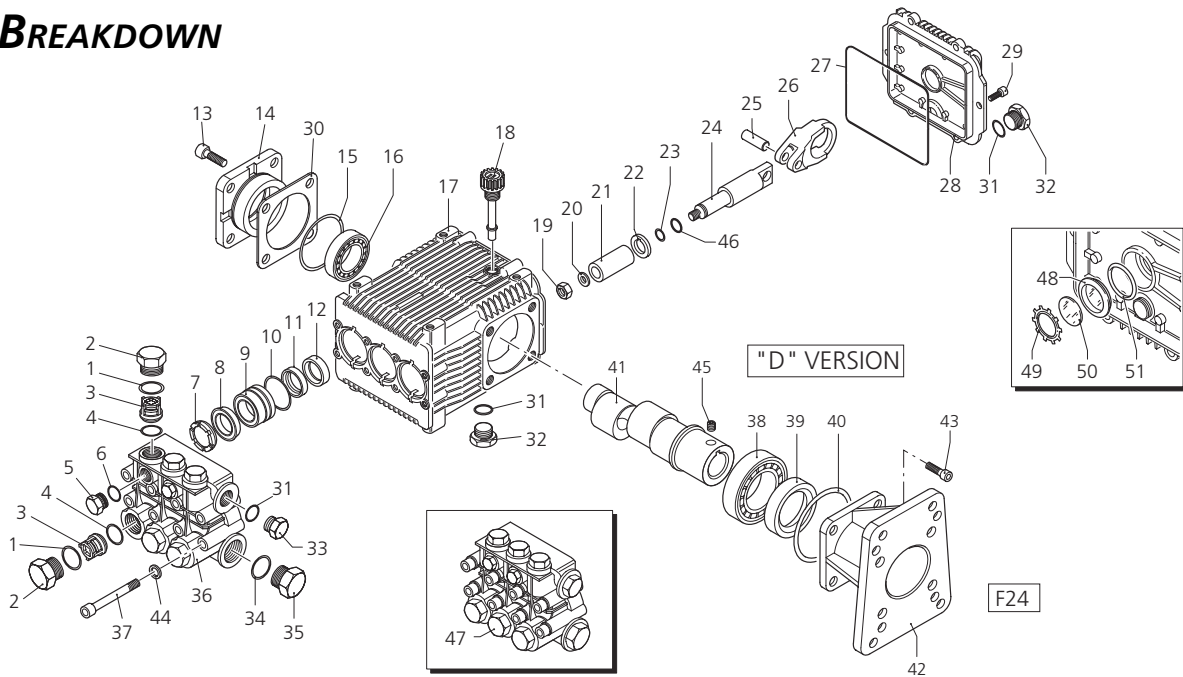
Torque Specifications Inch pounds (ft. lbs)

HEAD	PISTON NUT	REAR COVER	SIDE COVER	VALVE CAP	CON RODS
217 (18)	106 (8.8)	89 (7.5)	217 (18)	478 (40)	N/A

SPECIAL NOTE: Use AR64516 Oil. First change oil after 50 hours of use. Then every 500 hours. This oil is specially formulated to provide correct lubrication properties for our pumps. **No** other oil is factory approved for these pumps.



PARTS BREAKDOWN



Pos.	Code	Description	Qty.
1	960160	O-Ring	6
2	960090	Plug	6
3	960850	Plug	6
4	1380740	Plug	6
5	889052	Complete valve	6
6	1389051	Complete valve	6
7	880830	O-Ring	6
8	880581	Plug 1/4" G	2
9	1380690	Plug 1/4" G Nickel	2
10	820510	O-Ring	2
11	960110	Support ring	3
12	880320	Gasket	3
13	1380090	Piston guide	3
14	961240	O-Ring	3
15	880330	Gasket	3
16	1383130	Seal	3
17	850370	Screw	4
18	1380050	Bearing support	1
19	640030	O-Ring	1
20	2280240	Bearing	1
21	1382770	Pump housing	1
22	880130	Oil cap	3
23	962010	Nut	3
24	962000	Washer	3
25	1380940	Ceramic piston	3
26	1380950	Spacer	3
27	600180	O-Ring	3
28	1380920	Guiding piston	3
29	1380060	Piston pin	3
30	1383050	Aluminum con rod	3
31	1383020	Bronze con rod	3
32	1780510	O-Ring	1
33	1789010	Complete cover	1
34	1343510	Screw	6
35	1380120	0,10 mm shim	1-3
36	1380130	0,20 mm shim	1-3
37	1380530	0,25 mm shim	1-3
38	1382810	0,05 mm shim	1-3
39	740290	O-Ring	3
40	1980740	Plug 3/8" G	2
41	1980740	Plug 3/8" G	1
42	1981180	Plug 3/8" G Nickel	1

Pos.	Code	Description	Qty.
34	180101	O-Ring	1
35	820361	Plug 1/2" G	1
36	960870	Plug 1/2" G Nickel	1
37	1381071	Pump head	1
38	1381070	Pump head	1
39	820150	Screw	8
40	1380320	Bearing	1
41	621170	Seal	1
42	1380220	O-Ring	1
43	2280140	Hollow shaft	1
44	2280130	Hollow shaft	1
45	2280590	Hollow shaft	1
46	2280600	Hollow shaft	1
47	1380550	Gas engine flange	1
48	180030	Screw	4
49	1381850	Washer	8
50	820440	Grub screw	1
51	1080401	Ring	3
52	1389232	Pump head assembly	1
53	1389236	Pump head assembly	1
54	1389228	Pump head assembly	1
55	1389224	Pump head assembly	1
56	1260250	Oil indicator	1
57	1260430	Snap ring	1
58	1780690	Disc	1
59	1140450	O-Ring	1

Legend

Ø 18	Ø 18	Ø 18	Ø 18
For ○	For □	For ▼	For ◆
RKV3.5G25	RKV4G30A	RKV4.5G40H	RKV5.5G40H
	RKV4G30		
For ●	For ■	For ▲	For ★
RKV3.5G30H	RKV4G32	RKV3.5G35H	RKV4G35H
		RKV3.5G40H	RKV4G40H

Repair Kits

Water Seal Kit 1857	Valve Kit 1828	Pistons Kit 2546	Oil Seals Kit 1856
Pos. Qty.	Pos. Qty.	Pos. Qty.	Pos. Qty.
8 3	3 6	19 3	12 3
10 3	4 6	20 3	15 1
11 3		21 3	27 1
		22 3	39 1
		23 3	40 1
		46 3	

Support Rings Kit 1829
Pos. Qty.
7 3

Special Parts

Code	Description	Qty.
2819	Kit for up to 180° F Ø18 High Temp	1
2809	Viton water seals Ø18	1

