

Plunger Pumps

FEATURING

MANIFOLD: High strength forged brass or nickel plated for long term use.

BOLTS: Eight 8mm grade 8.8.

PLUNGERS: A special thick solid ceramic for long life, strong durability and more resilience.

CRANKCASE: Precision die-cast, large cooling fins and anodized for maximum heat dissipation. Sight glass, fill and side and bottom drain plugs.

BEARINGS: Oversized tapered roller bearing for maximum life and load distribution.

BEARINGS SUPPORTS: Precision die-cast and machined to assure concentricity and alignment.

VALVES, SEATS, AND SPRINGS: Stainless steel with specially designed Ultra Form cages to provide long life and positive seating.

SEALS AND V-PACKINGS: Continuously lubricating for extended life.

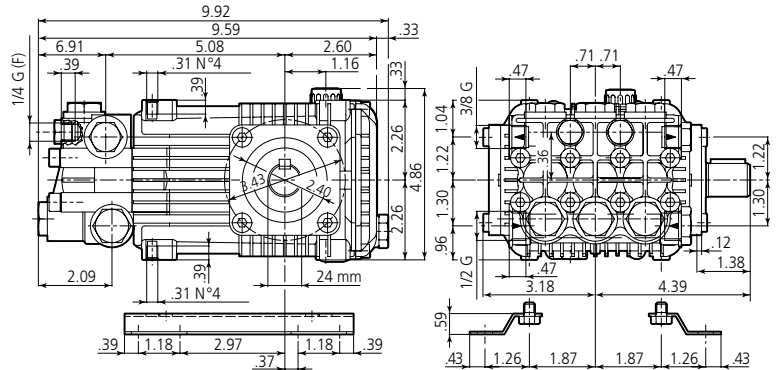
PLUNGER RODS: Stainless steel construction for strength, no plating to scrape off, back-up and o-ring plunger sealing system.

CONNECTING RODS: One piece special alloy aluminum or bronze for higher pressure, oversized for maximum strength, load disbursement, and long life. Heavy pin area construction, for added load strength.

DIMENSIONS



RK N version Solid shaft pump / ø 24 mm



SPECIFICATIONS

MODEL	MAX GPM	MAX LMP	MAX PSI	MAX BAR	POWER EBHP	BORE DIA MM	STROKE MM	CRANKSHAFT ID STAMP	WEIGHT LBS.
RK11.14N	2.9	11	2000	140	4.0	18	10.8	5	19
RK11.20HN	2.9	11	2900	200	5.5	18	10.8	5	20
RIK13.12N	3.43	13	1740	120	4.0	18	12.8	3	19
RIK13.20HN	3.43	13	2900	200	7.5	18	12.8	3	20
RK14.15N	3.7	14	2300	160	5.5	18	13.8	2	19
RK15.15N	3.96	15	2200	1500	5.5	18	14.6	1	19
RK15.20HN	3.96	15	2900	200	7.5	18	14.6	1	19
RK15.28HN	3.96	15	4000	275	11.00	18	14.6	1	20
RK18.20HN	4.75	18	2900	200	10.0	20	14.6	1	20
RK18.28HN	4.75	18	4000	275	13.3	20	14.6	1	20
RK21.20HN	5.55	21	2900	200	11.0	22	13.8	2	20

Oil Capacity = 15.3 oz

Maximum Fluid Temperature = 140° F

Inlet Thread = 1/2" F

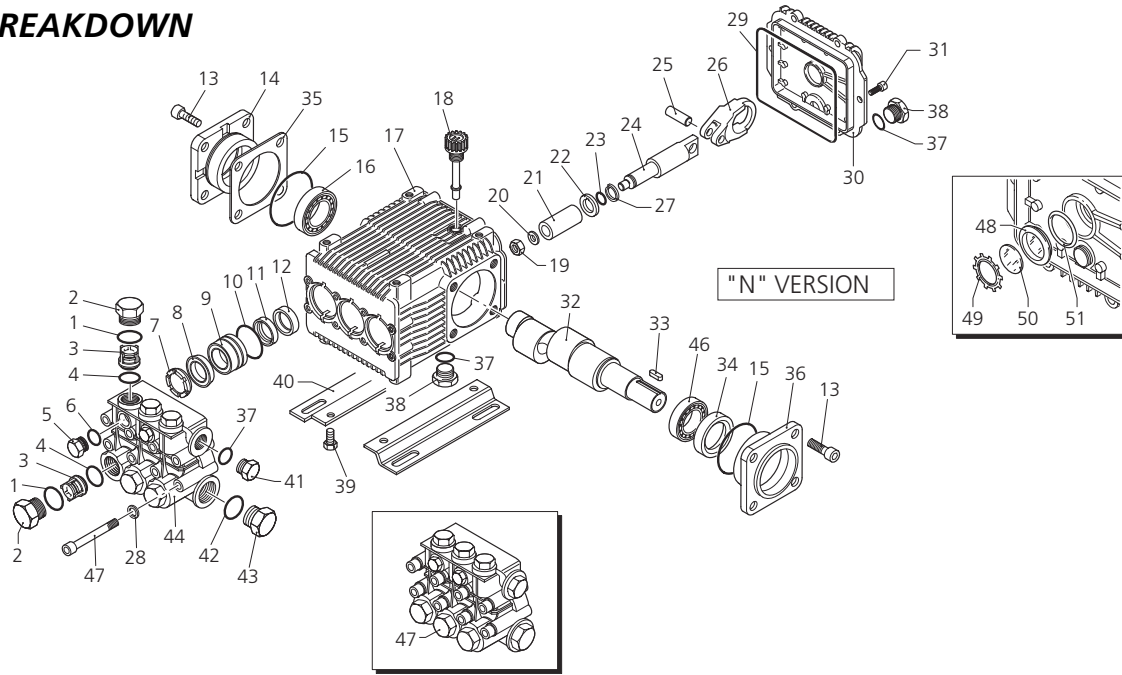
Discharge Thread = 3/8" F

Torque Specifications Inch pounds (ft. lbs)

HEAD	PISTON NUT	REAR COVER	SIDE COVER	VALVE CAP	CON RODS
217 (18)	106 (8.8)	89 (7.5)	217 (18)	478 (40)	N/A

SPECIAL NOTE: Use AR64516 Oil. First change oil after 50 hours of use. Then every 500 hours. This oil is specially formulated to provide correct lubrication properties for our pumps. **No** other oil is factory approved for these pumps. **ANNOVI REVERBERI High Performance Pumps**

PARTS BREAKDOWN



Pos.	Code	Description	Qty.	Pos.	Code	Description	Qty.	Legend				
1	960160	O-Ring	6	29	1780510	O-Ring	1	Ø 18	Ø 18	Ø 20	Ø 22	
2	960090	Plug RK	6	30	1789010	Complete cover	1	For ○	For □	For ▼	For ◆	
3	960850	Plug RKH*	6	31	1343510	Screw	6	RK11.14	RK13.12	RK18.12	RK21.10	
4	1380740	Plug RKH	6	32	2280100	Crankshaft	○ 1	RK11.20H	K13.17	RK18.16H	RK21.15H	
5	1389051	Complete valve	6	33	2280080	Crankshaft	□ 1	RK11.25H*	RK13.20H	RK18.20H	RK21.20H	
6	880830	O-Ring	6	34	2280070	Crankshaft	◆ 1	RK18.28H*				
7	880581	Plug 1/4" G RK	2	35	2280060	Crankshaft	▼ 1	For ●	For ■			
8	1380690	Plug 1/4" G Nickel RKH-H*	2	36	1380520	Key	1	RK15.15	RK14.16			
9	820510	O-Ring	2	37	180340	Seal	1	RK15.20H				
10	960110	Support ring Ø18	3	38	1380120	0,10 mm shim	1-3	RK15.25H*			*over 3600 psi	
11	840300	Support ring Ø20	3	39	1380130	0,20 mm shim	1-3	RK15.28H*				
12	840320	Support ring Ø22	3	40	1380530	0,25 mm shim	1-3					
13	880320	Gasket Ø18	3	41	1382810	0,05 mm shim	1-3					
14	840290	Gasket Ø20	3	42	1380040	Open bearing sup.	1					
15	840330	Gasket Ø22	3	43	740290	O-Ring	3					
16	1380090	Piston guide Ø18	3	44	1980740	Plug 3/8" G	2	Water Seal	Valve	Pistons	Oil Seals	
17	1380150	Piston guide Ø20	3	45	1260470	Screw	4	Kit 1857 Ø18	Kit 2864	Kit 2546 Ø18	Kit 1855	
18	1380160	Piston guide Ø22	3	46	1380141	Base	2	Kit 1887 Ø20		Kit 2759 Ø22		Kit 1855
19	961240	O-Ring	3	47	1980740	Plug 3/8" G RK	1	Pos. Qty.	Pos. Qty.	Pos. Qty.	Pos. Qty.	
20	880330	Gasket Ø18	3	48	1981180	Plug 3/8" G Nickel RKH-H*	1	8 3	3 6	19 3	12 3	
21	840280	Gasket Ø20	3	49	180101	O-Ring	1	10 3	4 6	20 3	15 2	
22	840340	Gasket Ø22	3	50	820361	Plug 1/2" G RK	1	11 3		21 3	29 1	
23	1383130	Seal	3	51	960870	Plug 1/2" G Nickel RKH-H*	1			22 3	34 1	
24	850370	Screw	4		1381071	Pump head Ø18 RK	1	Support Rings		23 3		
25	1380050	Bearing support	1		1381070	Pump head Ø18 RKH-H*	1	Kit 1829 Ø18		27 3		
26	640030	O-Ring	1		1380020	Pump head Ø20-22 RK	1	Kit 1815 Ø20				
27	2280240	Bearing	1		1380680	Pump head Ø20-22 RKH-H*	1	Kit 1816 Ø22				
28	1382770	Pump housing	1		45	820150	Screw	8	Pos. Qty.			
29	880130	Oil cap	3		46	840370	Bearing	1	7 3			
30	962010	Nut	3		1389270	Pump head assem Ø18 RK	1					
31	962000	Washer	3		1389272	Pump head assem Ø18 RKH	1					
32	1380940	Ceramic piston Ø18	3		1389271	Pump head assem Ø18 RKH*	1					
33	1380930	Ceramic piston Ø20	3		1389208	Pump head assem Ø20 RK	1	Code	Description	Qty.		
34	1382360	Ceramic piston Ø22	3		1389212	Pump head assem Ø20 RKH	1	2819	Kit for up to 180° F Ø18 High Temp	1		
35	1380950	Spacer	3		1389216	Pump head assem Ø22 RK	1	2820	Kit for up to 180° F Ø20 High Temp	1		
36	600180	O-Ring	3		1389216	Pump head assem Ø22 RK	1	2809	Viton water seals Ø18	1		
37	1380920	Guiding piston	3		1389220	Pump head assem Ø22 RKH	1	2810	Viton water seals Ø20	1		
38	1380060	Piston pin	3		48	1260250	Oil indicator	1	2811	Viton water seals Ø22	1	
39	1383050	Aluminum con rod	3		49	1260430	Snap ring	1				
40	1383020	Bronze con rod	3		50	1780690	Disc	1				
41	1080401	Ring	3		51	1140450	O-Ring	1				
42	1381850	Washer	8									

