

# Plunger Pumps

## FEATURING

**MANIFOLD:** High strength forged brass or nickel plated for long term use.

**BOLTS:** Eight 8mm stainless steel.

**PLUNGERS:** A special thick solid ceramic for long life, strong durability and more resilience.

**CRANKCASE:** Precision die-cast, large cooling fins and anodized for maximum heat dissipation.

**BEARINGS:** Premium SKF tapered roller bearings that provide extra load support, smoother and lower crankcase running temperatures and overall extended pump life.

**VALVES, SEATS, AND SPRINGS:** Stainless steel with specially designed Ultra Form cages to provide long life and positive seating.

**SEALS AND V-PACKINGS:** Continuously lubricating for extended life.

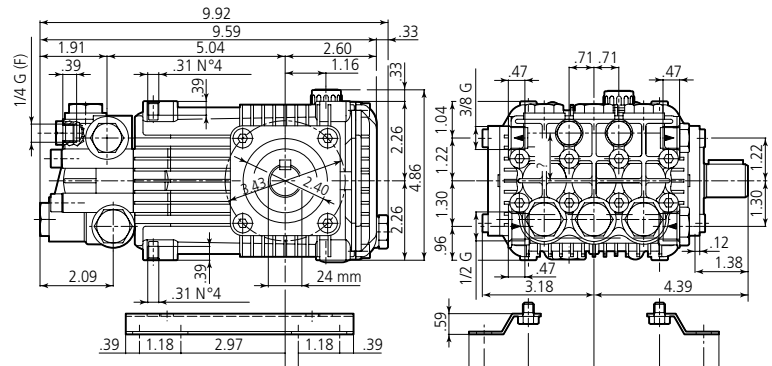
**PLUNGER RODS:** High strength stainless steel.

**CONNECTING RODS:** One piece special alloy aluminum or bronze for higher pressure, oversized for maximum strength, load disbursement, and long life. Heavy pin area construction, for added load strength.

## DIMENSIONS



RCW N version Solid shaft pump ø 24 mm



## SPECIFICATIONS

MODEL	MAX GPM	MAX LMP	MAX PSI	MAX BAR	POWER EBHP	BORE DIA MM	STROKE MM	CRANKSHAFT ID STAMP	WEIGHT LBS.
950 RPM									
RCW10.15N	2.65	10	2200	150	4.0	18	14.6	1	21
RCW15.14N	3.96	15	2000	140	5.5	22	13.8	2	21
1450RPM									
RCW11.10N	2.90	11	1450	100	2.5	18	10.8	5	21
RCW15.15N	3.96	15	2200	150	5.5	18	14.6	1	21

Oil Capacity = 15 oz

Maximum Fluid Temperature = 140° F

Inlet Thread = 1/2" F

Discharge Thread = 3/8" F

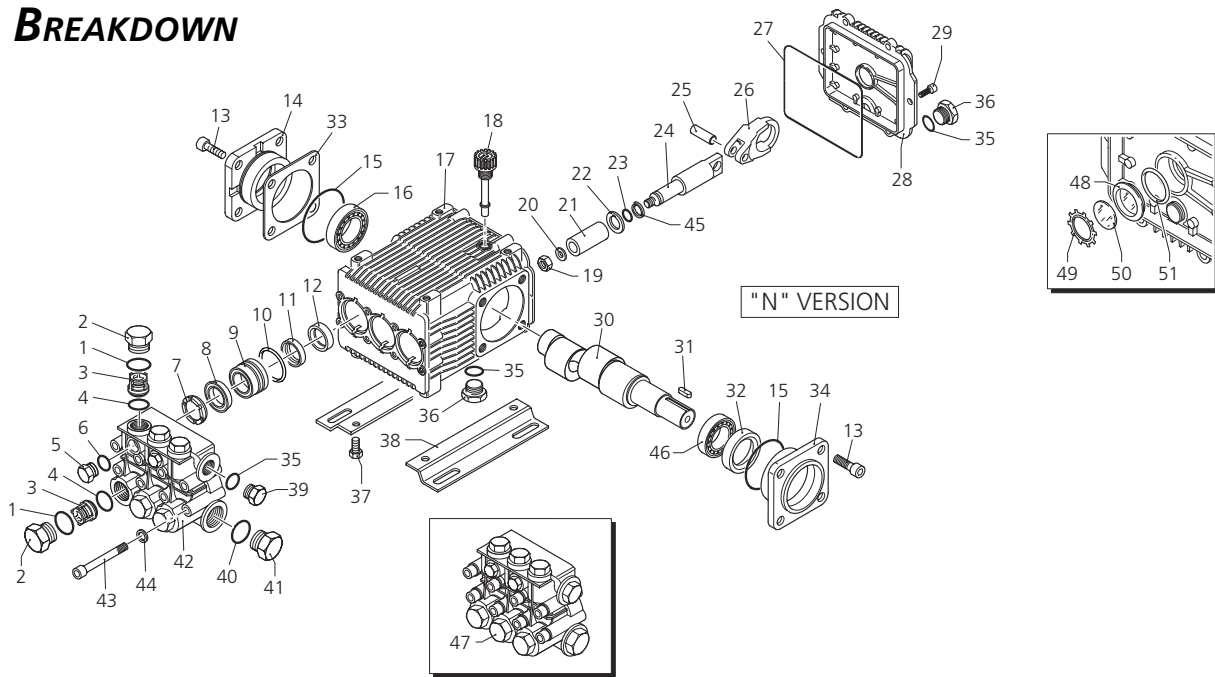
### Torque Specifications Inch pounds (ft. lbs)

HEAD	PISTON NUT	REAR COVER	SIDE COVER	VALVE CAP	CON RODS
217 (18)	106 (8.8)	89 (7.5)	217 (18)	478 (40)	N/A

**SPECIAL NOTE:** Use AR64516 Oil. First change oil after 50 hours of use. Then every 500 hours. This oil is specially formulated to provide correct lubrication properties for our pumps. **No** other oil is factory approved for these pumps.



**PARTS BREAKDOWN**



Pos.	Code	Description	Qty.	Pos.	Code	Description	Qty.	Legend																																							
1	960160	O-Ring	6	33	1382810	0,05 mm shim	1-3	∅ 18	∅ 22	∅ 18	∅ 18																																				
2	1380740	Plug	6	33	1380120	0,10 mm shim	1-3	For ○	For □	For ▼	For ◆																																				
3	1389051	Complete valve	6	33	1380130	0,20 mm shim	1-3	RCW10.15	RCW15.14	RCW11.10	RCW15.15																																				
4	880830	O-Ring	6	33	1380530	0,25 mm shim	1-3	950 RPM	950 RPM	1450 RPM	1450 RPM																																				
5	1380690	Plug 1/4" G	2	34	1380040	Open bearing support	1	<b>Repair Kits</b> <table border="1"> <tr> <td>Water Seal Kit 2502 ∅18</td> <td>Valve Kit 2864</td> <td>Pistons Kit 2539 ∅18</td> <td>Oil Seals Kit 2528</td> </tr> <tr> <td>Kit 2503 ∅22</td> <td>Kit 2864</td> <td>Kit 2541 ∅22</td> <td>Kit 2528</td> </tr> <tr> <td>Pos. Qty.</td> <td>Pos. Qty.</td> <td>Pos. Qty.</td> <td>Pos. Qty.</td> </tr> <tr> <td>7 3</td> <td>3 6</td> <td>19 3</td> <td>12 3</td> </tr> <tr> <td>8 3</td> <td>4 6</td> <td>20 3</td> <td>15 2</td> </tr> <tr> <td>9 3</td> <td></td> <td>21 3</td> <td>27 1</td> </tr> <tr> <td>10 3</td> <td></td> <td>22 3</td> <td>32 1</td> </tr> <tr> <td></td> <td></td> <td>23 3</td> <td></td> </tr> <tr> <td></td> <td></td> <td>49 3</td> <td></td> </tr> </table>				Water Seal Kit 2502 ∅18	Valve Kit 2864	Pistons Kit 2539 ∅18	Oil Seals Kit 2528	Kit 2503 ∅22	Kit 2864	Kit 2541 ∅22	Kit 2528	Pos. Qty.	Pos. Qty.	Pos. Qty.	Pos. Qty.	7 3	3 6	19 3	12 3	8 3	4 6	20 3	15 2	9 3		21 3	27 1	10 3		22 3	32 1			23 3				49 3	
Water Seal Kit 2502 ∅18	Valve Kit 2864	Pistons Kit 2539 ∅18	Oil Seals Kit 2528																																												
Kit 2503 ∅22	Kit 2864	Kit 2541 ∅22	Kit 2528																																												
Pos. Qty.	Pos. Qty.	Pos. Qty.	Pos. Qty.																																												
7 3	3 6	19 3	12 3																																												
8 3	4 6	20 3	15 2																																												
9 3		21 3	27 1																																												
10 3		22 3	32 1																																												
		23 3																																													
		49 3																																													
6	820510	O-Ring	2	35	740290	O-Ring	3	<table border="1"> <tr> <td>Support Rings Kit 1829 ∅18</td> <td></td> <td></td> <td></td> </tr> <tr> <td>Kit 1816 ∅22</td> <td></td> <td></td> <td></td> </tr> <tr> <td>Pos. Qty.</td> <td></td> <td></td> <td></td> </tr> <tr> <td>7 3</td> <td></td> <td></td> <td></td> </tr> </table>				Support Rings Kit 1829 ∅18				Kit 1816 ∅22				Pos. Qty.				7 3																							
Support Rings Kit 1829 ∅18																																															
Kit 1816 ∅22																																															
Pos. Qty.																																															
7 3																																															
7	960110	Support ring ∅18	3	36	1980740	Plug 3/8" G	2																																								
8	840320	Support ring ∅22	3	37	1260470	Screw	4																																								
9	1382740	Gasket ∅18	3	38	1380141	Base	2																																								
10	840330	Gasket ∅22	3	39	1981180	Plug 3/8" G Nickel	1																																								
11	1380090	Piston guide ∅18	3	40	180101	O-Ring	1																																								
12	1380160	Piston guide ∅22	3	41	960870	Plug 1/2" G	1																																								
13	961240	O-Ring	3	42	1381070	Pump head ∅18	1																																								
14	2280580	Gasket ∅18	3	43	1380680	Pump head ∅22	1																																								
15	840340	Gasket ∅22	3	44	1383440	Screw	8																																								
16	1383130	Seal	3	45	1381850	Washer	8																																								
17	850370	Screw	8	46	1080550	Ring	3																																								
18	1380050	Closed bearing support	1	47	1383140	Bearing	1																																								
19	640030	O-Ring	2	48	1389261	Pump head assem ∅18	1																																								
20	2280340	Bearing	1	49	1389262	Pump head assem ∅22	1																																								
21	1382770	Pump housing	1	50	1260250	Oil indicator	1																																								
22	880130	Oil cap	1	51	1260430	Snap ring	1																																								
23	1260110	Nut	3		1780690	Disc	1																																								
24	1260100	Washer	3		1140450	O-Ring	1																																								
25	1383230	Piston ∅18	3																																												
26	1383340	Piston ∅22	3																																												
27	1383350	Spacer	3																																												
28	480480	O-Ring	3																																												
29	1383240	Guiding piston	3																																												
30	1380060	Piston pin	3																																												
31	1383020	Bronze con rod	3																																												
32	1780510	O-Ring	1																																												
33	1789010	Complete cover	1																																												
34	1343510	Screw	6																																												
35	2280060	Crankshaft	1																																												
36	2280070	Crankshaft	1																																												
37	2280100	Crankshaft	1																																												
38	1380520	Key	1																																												
39	180340	Seal	1																																												

