

Plunger Pumps

FEATURING

MANIFOLD: High strength forged brass or nickel plated for long term use.

BOLTS: Eight 10mm grade 8.8.

PLUNGERS: A special thick solid ceramic for long life, strong durability and more resilience.

CRANKCASE: Precision die-cast, large cooling fins and anodized for maximum heat dissipation. Bayonet style sight glass located in the rear and side cover, fill and side and bottom drain plugs.

BEARINGS: Premium SKF tapered roller bearings that provide extra load support, smoother and lower crankcase running temperatures and overall extended pump life.

VALVES, SEATS, AND SPRINGS: Stainless steel with specially designed Ultra Form cages to provide long life and positive seating.

SEALS AND V-PACKINGS: Continuously lubricating for extended life.

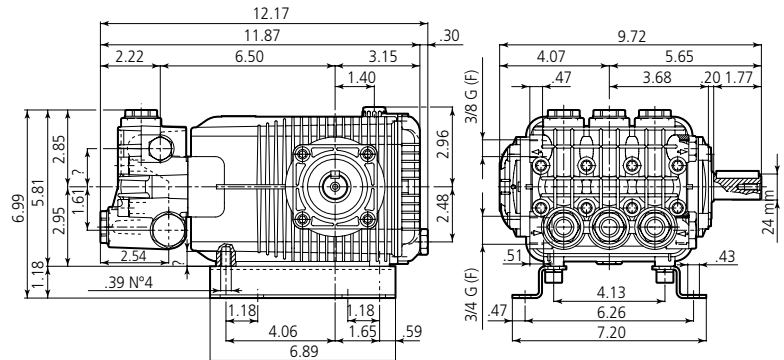
PLUNGER RODS: High strength stainless steel, for heavy duty use.

CONNECTING RODS: Two-piece special alloy aluminum based material, oversized for maximum strength, load disbursement, and long life. Heavy pin area construction, for added load strength.

DIMENSIONS



CWX N version Solid shaft pump ø 24 mm



SPECIFICATIONS

MODEL	MAX GPM	MAX LMP	MAX PSI	MAX BAR	POWER EBHP	BORE DIA MM	STROKE MM	CRANKSHAFT ID STAMP	WEIGHT LBS.
950 rpm CW15.17N	3.96	15	2500	170	7.5	20	16.6	3	32
1200 rpm CW18.10N	4.75	18	1450	100	5.0	20	16.6	3	32
1750 rpm CW4G25N	4.0	15	2500	170	6.5	20	10.0	6	32

Oil Capacity = 32oz

Maximum Fluid Temperature = 140°F

Inlet Thread = 3/4" F

Discharge Thread = 3/8" F

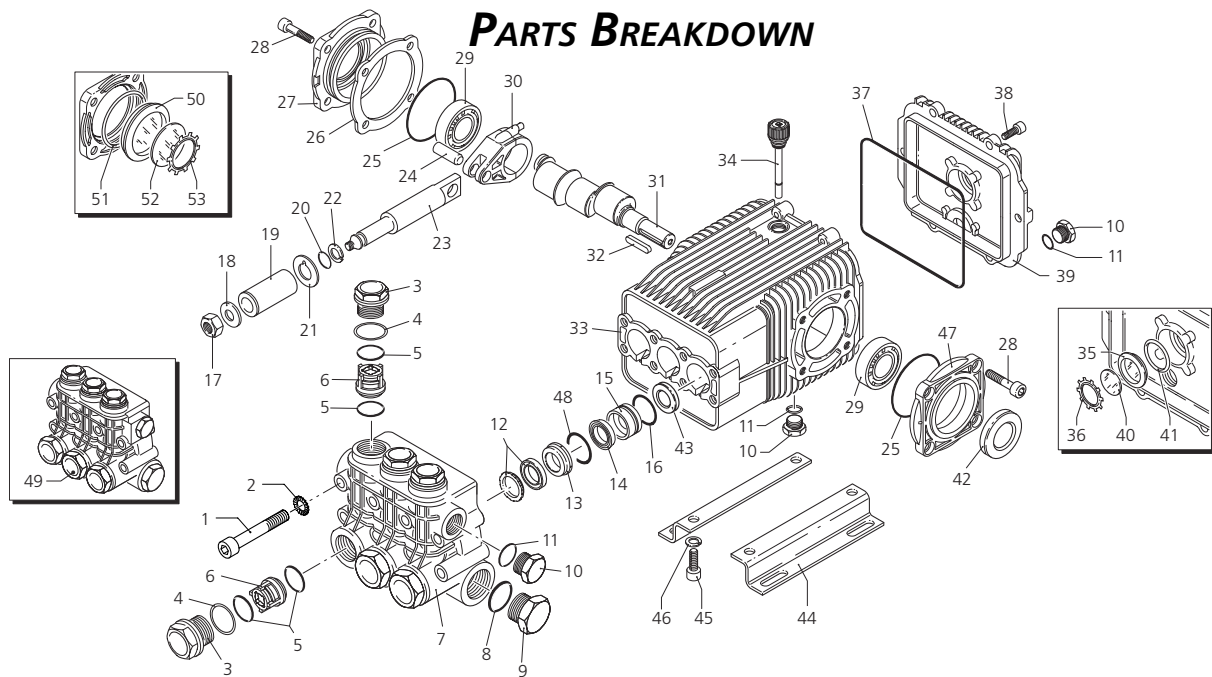
Torque Specifications Inch pounds (ft. lbs)

HEAD	PISTON NUT	REAR COVER	SIDE COVER	VALVE CAP	CON RODS
442 (37)	106 (8.8)	92 (7.7)	217 (18)	602 (50)	89 (7.5)

SPECIAL NOTE: Use AR64516 Oil. First change oil after 50 hours of use. Then every 500 hours. This oil is specially formulated to provide correct lubrication properties for our pumps. **No** other oil is factory approved for these pumps.



PARTS BREAKDOWN



Pos.	Code	Description	Qty.	Pos.	Code	Description	Qty.	Legend		
1	1941360	Screw	8	37	1940410	O-Ring	1	Ø 20	Ø 20	Ø 20
2	650530	Washer	8	38	1200430	Screw	6	For ○	For □	For ▼
3	1940140	Plug	6	39	1949010	Complete cover	1	CWX15.17	CWX18.10	CXW4G25N
4	1940150	Ring	6	40	1780690	Disc	1	950 RPM	1200 RPM	1750 RPM
5	1140450	O-Ring	12	41	1140450	O-Ring	1			
6	1949050	Complete valve	6	42	820680	Seal	1			
7	1940021	Pump head	1	43	1940560	Seal	3			
8	550350	O-Ring	1	44	1940370	Base	2			
9	1140300	Plug 3/4" G	1	45	1940380	Screw	4			
10	1940780	Plug 3/8" G	3	46	200231	Washer	4			
11	740290	O-Ring	3	47	1941240	Open bearing support	1	Water Seal Kit 2783	Valve Kit 2780	Pistons Kit 2543
12	1940440	Gasket w/ring	3	48	1941220	O-Ring	3	Pos. Qty.	Pos. Qty.	Pos. Qty.
13	1940430	Front piston guide	3	49	1949200	Pump head assembly	1	12 3	5 6	17 3
14	1940470	Gasket	3	50	1941270	Oil indicator	1	14 3	6 6	18 3
15	1940450	Rear piston guide	3	51	100410	O-Ring	1	16 3		19 3
16	820490	O-Ring	3	52	1941260	Disc	1	48 3		20 3
17	1940570	Nut	3	53	1941290	Snap ring	1			21 3
18	1940580	Washer	3							22 3
19	1420430	Piston	3							
20	880840	O-Ring	3							
21	960460	Spacer	3							
22	1940120	Ring	3							
23	1940070	Guiding piston	3							
24	1940060	Piston pin	3							
25	1941380	O-Ring	2							
26	1941390	0,05 mm shim	1-3							
27	1941400	0,10 mm shim	1-3							
28	1941410	0,19 mm shim	1-3							
29	1941420	0,25 mm shim	1-3							
30	1949011	Complete side cover	1							
31	1940180	Crankshaft	1							
32	1940530	Crankshaft	1							
33	620250	Key	1							
34	1941330	Pump housing	1							
35	1140370	Oil cap	1							
36	1260250	Oil indicator	1							
	1260430	Snap ring	1							

Legend

Ø 20	Ø 20	Ø 20
For ○	For □	For ▼
CWX15.17	CWX18.10	CXW4G25N
950 RPM	1200 RPM	1750 RPM

Repair Kits

Water Seal Kit 2783	Valve Kit 2780	Pistons Kit 2543	Oil Seals Kit 2781
Pos. Qty.	Pos. Qty.	Pos. Qty.	Pos. Qty.
12 3	5 6	17 3	25 3
14 3	6 6	18 3	37 1
16 3		19 3	42 1
48 3		20 3	43 3
		21 3	
		22 3	

Piston Guide Kit 2784

Pos. Qty.
13 3
15 3

Special Parts

Code	Description	Qty.
2778	Viton water seals Ø20	1

