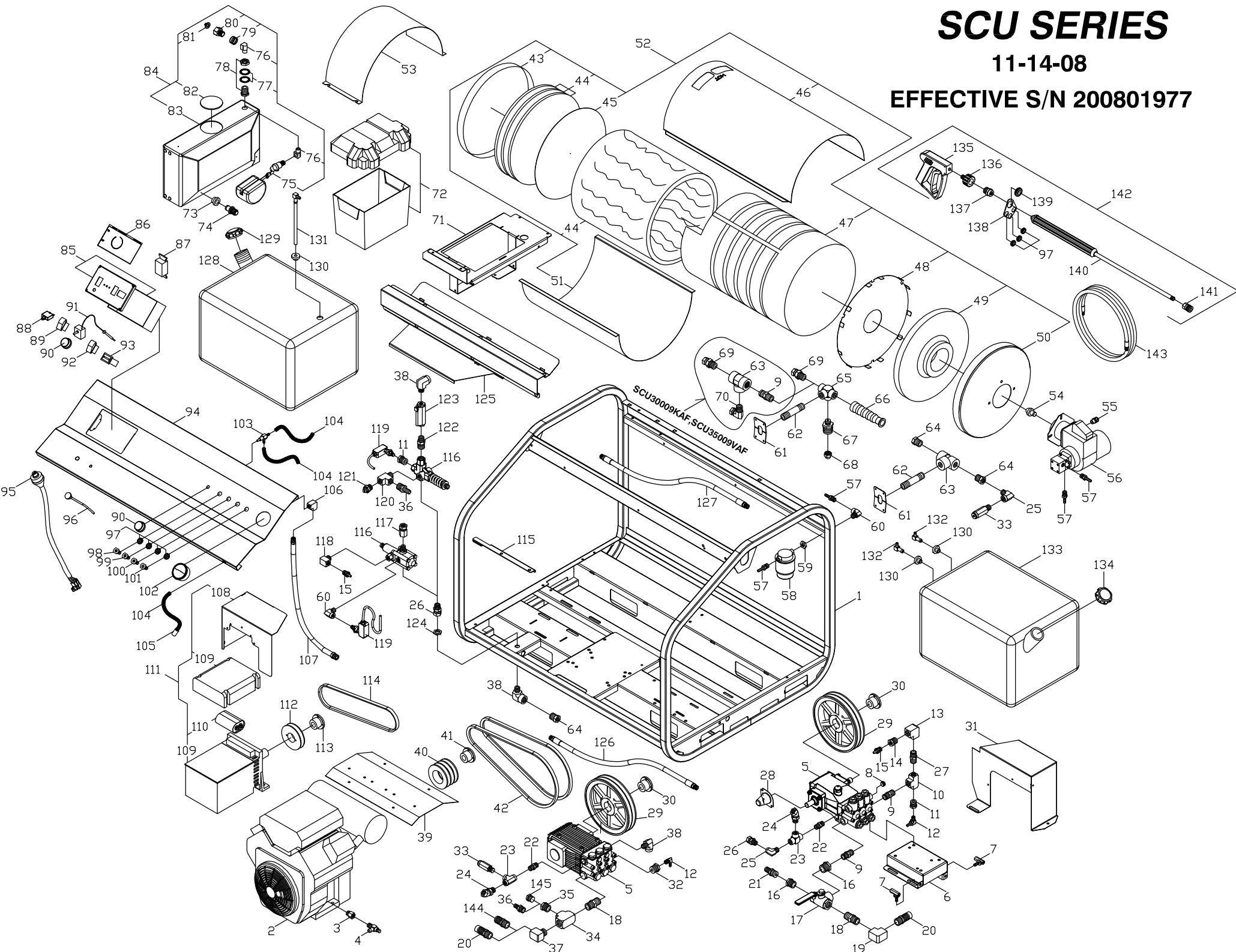


SCU SERIES

11-14-08

EFFECTIVE S/N 200801977



SCU SERIES PARTS LIST

1	HSC14 SCU FRAME 14 STAINLESS (2008)	ALL	69	DE568 SWIVEL 3/8F x 1/2M STEEL	ALL
2	MS150 ENGINE GAS 16HP VANGAURD E/S W/MUFFLER	SCU33005V	70	DE869 SWIVEL 3/8FS x 1/2M 90 STEEL	SCU33009KAF,SCU35009VAF
	MK200 ENGINE 20HP KOHLER CS W/MUFFLER	SCU35005KQ	71	HB024 BATTERY BOX TRAY SCU (2008)	ALL
	MH240 ENGINE 24HP HONDA E/S W/MUFFLER	SCU35006HQ	72	HB100 BATTERY BOX ATWOOD G24 (LARGE)	ALL
	MS210 ENGINE GAS 21HP VANGAURD E/S W/MUFFLER	SCU35006VF	73	DF10 WATER TANK BUSHING 5/8	SCU33005V,SCU35005KQ,SCU35006VQ,SCU35006HQ
	MK250 ENGINE 25HP KOHLER W/MUFFLER	SCU30009KAF	74	DOF10 DISCONNECT BARB/TANK FITTING	SCU33005V,SCU35005KQ,SCU35006VQ,SCU35006HQ
	MS290 ENGINE GAS 29HP VANGAURD E/S W/MUFFLER	SCU35009VAF	75	VF08 FLOAT VALVE 3/8 BRASS	SCU33005V,SCU35005KQ,SCU35006VQ,SCU35006HQ
3	D4060 MALE ADAPTER 3/8 BRASS	SCU33005KQ,SCU330009KAF	76	D566 STREET ELL 3/8 BRASS	SCU33005V,SCU35005KQ,SCU35006VQ,SCU35006HQ
	MS006 OIL DRAIN VALVE 3/8	SCU33005V,SCU35005KQ,SCU35006VQ,SCU330009KAF	77	FW700 WASHER LOCK 1 in GALV***	SCU33005V,SCU35005KQ,SCU35006VQ,SCU35006HQ
4	MS007 OIL DRAIN VALVE 14mm	SCU35006HQ,SCU35009VAF	78	D7520 PANEL FITTING 3/4 BRASS	SCU33005V,SCU35005KQ,SCU35006VQ,SCU35006HQ
	P4535 PUMP 5CP3120 4.5 @ 3500 20mm	SCU33005V,SCU35005KQ	79	DO010 SPRING GARDEN H A	SCU33005V,SCU35005KQ,SCU35006VQ,SCU35006HQ
	PG563 PUMP 5.6/3500 NICKEL PLATED MA	SCU35006VQ,SCU35006HQ	80	DO06M GARDEN H A 3/8 NPT MALE	SCU33005V,SCU35005KQ,SCU35006VQ,SCU35006HQ
	PG585 PUMP TSF2021 23600 @ 8.5 GPM	SCU30009KAF,SCU35009VAF	81	DO021 SCREEN WASHER GARDEN H A	SCU33005V,SCU35005KQ,SCU35006VQ,SCU35006HQ
6	HSC40 PUMP RAIL ASSEM. SCU-2008 MODELS	ALL	82	HL017 TANK CAP 4in W/HOLE	SCU33005V,SCU35005KQ
7	HPR60 PUMP RAIL BOLT	ALL	83	WT040 TANK ; FLOAT 4 GAL HD LINEAR	SCU33005V,SCU35005KQ,SCU35006VQ,SCU35006HQ
8	D1061 PLUG 3/8 FLUSH HEAD HEX STEEL	SCU33005V,SCU35005KQ	84	WT046 FLOAT TANK ASM W/VALVE/FILTER	SCU33005V,SCU35005KQ,SCU35006VQ,SCU35006HQ
9	D2088 NIPPLE 1/2" BRASS	SCU33005V,SCU35005KQ,SCU35006VQ,SCU35006HQ		WT05C OPTIONAL SC ANTIFREEZE TANK	SCU33005V,SCU35005KQ,SCU35006VQ,SCU35006HQ
10	D6088 TEE 1/2" BRASS	SCU33005V,SCU35005KQ,SCU35006VQ,SCU35006HQ	85	HSC51 LASER CUT SC BOX ASM/TOP AND BOTTOM	SCU33009KAF,SCU35009VAF
11	D1084 BUSHING 1/2 x 1/4 BRASS	ALL	86	GLL57 LABEL; SC/SS PANEL CONTROL BOX***	ALL
12	D8040 HOSE BARB 1/4 90 ELBOW*	ALL	87	EP154 GFCl DUPLEX RECEPTACLE 20 AMP	ALL
13	D5088 ELL 1/2 BRASS	SCU33005V,SCU35005KQ	88	ECF10 CIRCUIT BREAKER 15 AMP*	ALL
	D5888 STREET ELL 1/2 BRASS*	SCU35006VQ,SCU35006HQ	89	EC410 ROCKER SWITCH 110V RED SPST	ALL
14	D1086 BUSHING 1/2 x 3/8 BRASS	SCU33005V,SCU35005KQ,SCU35006VQ,SCU35006HQ	90	EC470 KNOB; BLUE 25id x 1.5od	ALL
15	D6062 HOSE BARB ; PUSH LOCK 3/8H x 3/8	SCU33005V,SCU35005KQ,SCU35006VQ,SCU35006HQ	91	EC451 THERMOSTAT; 60-250 1 GP PART=25	SCU33005V,SCU35005KQ,SCU35006VQ,SCU35006HQ
16	D1126 BUSHING 3/4 x 1/2 BRASS	ALL		EC455 THERMOSTAT; 60-190F***	SCU30009KAF,SCU35009VAF
17	VV838 BALL VALVE 3/4" 3 WAY	SCU33005V,SCU35005KQ,SCU35006VQ,SCU35006HQ	92	EC411 ROCKER SWITCH 110V CLEAR SPST	ALL
18	D2089 NIPPLE 3/4" BRASS	ALL	93	EM601 HOUR METER 110V	ALL
19	D7512 ELL 3/4" BRASS	SCU33005V,SCU35005KQ,SCU35006VQ,SCU35006HQ	94	HSC38 SCU CONTROL PANEL, EZ ACCESS (2008)	ALL
20	DJ033 ORIFICED BARB .339 3/4NPT x 1" H BARB W/NYLON ORIFICE	SCU33005V	95	ESS08 WIRE HARNESS 25HP KOHLER SC	SCU35005KQ,SCU30009KAF
	DJ037 ORIFICED BARB .375 3/4NPT x 1" H BARB W/NYLON ORIFICE	SCU35005KQ	96	HL216 CHOKE CABLE 6'	SCU35005KQ,SCU30009KAF
	DJ035 ORIFICED BARB .359 3/4NPT x 1" H BARB W/NYLON ORIFICE	SCU35006VQ	97	HLB09 GROMET NOZZLE HOLDER***	ALL
	DJ040 ORIFICED BARB .406 3/4NPT x 1" H BARB W/NYLON ORIFICE	SCU35006HQ	98	NO650 NOZZLE/QDC 05 x 0"	SCU33005V,SCU35005KQ,SCU30009KAF
	DJ045 ORIFICED BARB .453 3/4NPT x 1" H BARB W/NYLON ORIFICE	SCU30009KAF,SCU35009VAF FOR INLET SOAP FUNCTION		NO650 NOZZLE/QDC 05 x 0"	SCU35006VQ
21	D8076 HOSE BARB 5/8H x 1/2M .339id PNK	SCU33005V		NO600 NOZZLE/QDC 06 x 0	SCU35006HQ
	D8077 HOSE BARB 5/8H x 1/2M .406id RED	SCU35005KQ,SCU35006VQ,SCU35006HQ		NO450 NOZZLE/QDC 045 x 0	SCU35006VAF
22	DB506 NIPPLE 3/8 STEEL	ALL	99	NO502 NOZZLE/QDC 05 x 15	SCU33005V,SCU35005KQ,SCU30009KAF
23	DE066 TEE 3/8 STEEL	ALL		NO552 NOZZLE/QDC 055 x 15	SCU35006VQ
24	DE606 SWIVEL 45 3/8M x 3/8F STEEL	ALL		NO602 NOZZLE/QDC 06 x 15	SCU35006HQ
25	DC688 STREET ELL 3/8 STEEL	SCU35006VQ,SCU35006HQ		NO452 NOZZLE/QDC 045 x 15	SCU35009VAF
	DE866 SWIVEL 3/8F x 3/8M 90 BRAZED	SCU33005V,SCU35005KQ	100	NO694 NOZZLE/QDC 05 x 40	SCU33005V,SCU35005KQ,SCU30009KAF
26	DE096 SWIVEL 3/8 STEEL	SCU35006VQ,SCU35006HQ		NO655 NOZZLE/QDC 055 x 40	SCU35006VQ
27	D2088 NIPPLE 1/2" BRASS	SCU33005V,SCU35005KQ		NO604 NOZZLE/QDC 06 x 40	SCU35006HQ
28	PP692 SHAFT PROTECTOR 5 FRAME BD PMP	SCU33005V,SCU35005KQ		NO454 NOZZLE/QDC 045 x 40	SCU35009VAF
29	KU080 SHEAVE 2BK90H	SCU33005V	101	NO453 NOZZLE/QDC 045 x 25	SCU33005V,SCU35005KQ,SCU35006VQ
	KU090 SHEAVE 2BK90H	SCU35005KQ,SCU35006VQ,SCU35006HQ		NO553 NOZZLE/QDC 05 x 25	SCU35006HQ
	KV090 SHEAVE 3BK90H	SCU30009KAF,SCU35009VAF	102	UG055 GAUGE; 5000psi DUAL SCALE; PN	ALL
30	KSH17 BUSHING H20mm	SCU33005V,SCU35005KQ	103	VVC10 CHEMICAL MET VALVE MV-100 MOD	ALL
	KSH19 BUSHING H24mm	SCU35006VQ,SCU35006HQ,SC30009KAF,SCU35009VAF	104	DH804 TUBING; CLEAR BRAIDED; 1/4	ALL
31	HSC46 PUMP BELT GUARD SCU-WITH 5CP PUMPS	SCU33005V,SCU35005KQ	105	VF045 STRAINER CHEMICAL W/CHECK	ALL
	HSC42 PUMP BELT GUARD SCU HIGH FLOW UNITS	SCU35006VQ,SCU35006HQ,SC30009KAF,SCU35009VAF	106	DS044 ELL 1/4 BRASS*	ALL
32	D1127 BUSHING 3/4M x 1/4F BRASS	SCU30009KAF,SCU35009VAF	107	DH128 HOSE 1/4 x 26" 5000psi HN GAUGE HN MODULE GAUGE HOSE	ALL
33	UP137 PRESSURE RELIEF 3700psi BLACK	SCU33005V,SCU30009KAF	108	HSC20 GENERATOR BELT GUARD SCU	ALL
	UP045 PRESSURE RELIEF 4500+15% 500q	SCU35005KQ,SCU35006VQ,SCU35006HQ,SCU35009VAF	109	MB020 GENERATOR 2500w LSA32110	ALL
	D6120 TEE 3/4" BRASS (NOT POTTED)	SCU30009KAF,SCU35009VAF	110	MB025 CAPACITOR, GENERATOR 15MFD	ALL
35	D1128 BUSHING 3/4 x 1/2 BRASS	SCU30009KAF,SCU35009VAF	111	MB052 SCU GENERATOR ASSEMBLY (2008)	ALL
36	D8088 HOSE BARB 1/2" BRASS*	SCU30009KAF,SCU35009VAF FOR INLET SOAP FUNCTION	112	KT045 SHEAVE BK45H	SCU35005KQ,SCU30009KAF,SCU35009VAF
37	D5512 STREET ELBOW 3/4" BRASS	SCU30009KAF,SCU35009VAF		KT034 SHEAVE BK34H	SCU33005V,SCU35006VQ
38	DE586 STREET ELL 1/2F X 3/8m steel	SCU30009KAF,SCU35009VAF		KT040 SHEAVE BK40H	SCU35006HQ
39	HSC47 MUFFLER HEAT SHIELD SCU	SCU33005V,SCU35005KQ,SCU35006VQ,SCU30009KAF	113	KSH19 BUSHING H24mm	ALL
	HS039 MUFFLER HEAT SHIELD , 20 HONDA 8/98JR	SCU35009VAF	114	KS834 BELT BX34	SCU33005V
40	KV036 SHEAVE 3BK36 x 1"	SCU35006HQ		KS836 BELT BX36	SCU35006VQ
	KV038 SHEAVE 3TB38	SCU33005V		KS838 BELT BX38	SCU35006HQ,SCU30008KAF,SCU35009VAF
	KV046 SHEAVE 3TB46	SCU35006VQ,		KS84X BELT BX40	SCU35005KQ
	KV054 SHEAVE 4TB42	SCU35005KQ,SCU35006HQ	115	HPR57 ADJUSTER BRKT ASM-GENERATOR SCU	ALL
41	KSP16 BUSHING P1 x 1	SCU30009KAF,SCU35009VAF	116	UU371 UNLOADER 3-5 @ 3500 K7-1	SCU33005V,SCU35005KQ,
	KSP18 BUSHING P1 x 1 1/8	SCU33005V,SCU35005KQ,SCU35006VQ,		UU375 UNLOADER K7-2 W/ BYPAS #1	SCU35006VQ,SCU35006HQ
	KSP23 BUSHING P1 x 1 7/16	SCU35006HQ,SCU35009VAF		UU320 UNLOADER/REGULAR 4000 @ 21 GREEN SPRING	SCU30009KAF,SCU35009VAF
42	KS842 BELT BX42	SCU30009KAF	117	DE867 SWIVEL 3/8FP x 3/8FPS	SCU33005V,SCU35005KQ,SCU35006VQ,SCU35006HQ
	KS844 BELT BX44	SCU33005V,	118	D5666 STREET ELL 3/8 BRASS	SCU33005V,SCU35005KQ,SCU35006VQ,SCU35006HQ
	KS845 BELT BX45	SCU35005KQ	119	VS030 PRESSURE SWITCH 4000 1/4" PR16	ALL
43	B0028 COIL CAP FLAT SC 18" NO HOLE	SCU35006VQ,SCU35005HQ,SCU30009KAF,SCU35009VAF	120	D6588 STREET TEE 1/2" BRASS*	SCU30009KAF,SCU35009VAF
44	BN053 INSUL BLKT 50SQ 1/2 x 24 8#25	ALL	121	UPT46 THERM DUMP VALVE 145F 1/2MPT	SCU30009KAF,SCU35009VAF
45	BN112 INSUL DISC RETAINER 18" SC FLAT END CAP	ALL	122	DB507 NIPPLE 3/8 x 1/2 STEEL	SCU30009KAF,SCU35009VAF
46	B2315 COIL WRAP TOP W/RG 36in ASM 8/98JR	ALL	123	VS055 FLOW SWITCH 9 @ 450 STS	SCU30009KAF,SCU35009VAF
47	BC480 COIL: 4PK SCH 80 18"	ALL	124	D7061 HEX NUT 3/8 BRASS-REMOTE UNLOADER	ALL
48	BN111 INSULATION DISC RETAINER 4in HOLE	ALL	125	HSC21 FUEL TANK HEAT SHIELD-SCU	ALL
49	BN054 INSULATION HEAD 18" (TOP HAT)	ALL	126	DH034 HOSE 3/8 x 34in 5000psi NO WIP	SCU33005V,SCU35005KQ,SCU35006VQ,SCU35006HQ
50	B0013 COIL CAP ASM 18in 4.5id GRAINE 8/98JR	ALL		DH049 HOSE 1/2 x 50in 3500psi NO WIP	SCU30009KAF,SCU35009VAF
51	B2323 COIL WRAP BOTTOM ASM 12/98BL	ALL	127	DH007 HOSE 3/8 x 48in 5000psi	SCU33005V,SCU35005KQ,SCU35006VQ,SCU35006HQ
52	BC491 COIL ASM 4PK SCH80 SCU (2008)	ALL		DH046 HOSE 1/2 x 46in 3500psi NO WIP	SCU30009KAF,SCU35009VAF
53	HSC19 BATTERY RAIN GUARD-SCU (2008)	ALL	128	WT08R FUEL TANK 18 GAL GAS RED	ALL
54	BZ300 FUEL NOZZLE 3.0 90B	SCU33005V,SCU35005KQ,	129	WT081 FUEL CAP; GASOLINE	ALL
	BZ350 FUEL NOZZLE 3.5 90B	SCU35006VQ,SCU35006HQ,	130	DF04 FUEL TANK BUSHING 1/4	ALL
	BZ400 FUEL NOZZLE 4.0 90B	SCU30009KAF,SCU35009VAF	131	DF599 FUEL TANK ADAPTER W/PLASTIC TUBE	ALL
55	EWOC8 STRAIN RELIEF 1/2 HEYCO (3/8)	ALL	132	DFE04 FUEL TANK ELL 1/4	ALL
56	BU007 BURNER; WAYNE 110v CAP 2-4	ALL	133	WT078 FUEL TANK 18 GAL DIESEL CLEAR*	ALL
57	D8044 BARB; HOSE; 1/4; BRASS* .312 I	ALL	134	WT080 FUEL CAP; DIESEL	ALL
58	BF020 FUEL FILTER; RACOR HYDRO TEK	ALL	135	VG200 TRIGGER GUN, INSULATED 4000psi	ALL
59	D7064 HEX NUT 1/4 BRASS	ALL	136	DO74T M22 TWIST COUPLER 1/4" MALE	ALL
60	DC043 STREET ELL 1/4 STEEL	ALL	137	DO74F TWIST COUPLER 1/4 PLUG FEM-sut	ALL
61	B2324 COIL NIPPLE RETAINER 1/2in 12/98BL	ALL	138	HN205 NOZZLE HOLDER (FOR WAND)	ALL
62	BC855 BURNER NIPPLE; 1/2 x 5.5 SCH80*	ALL	139	HLB30 GROMET; NOZZLE HOLDER**	ALL
63	DE088 TEE 1/2 STEEL A105 FORGED	ALL	140	WM045 WAND 1/4 x 48in MOLDED GRIP	ALL
64	DA086 BUSHING 1/2 x 3/8 STEEL	ALL	141	DO04S COUPLER 1/4 SOCK FEM	ALL
65	DE08S TEE 1/2in-SPECIAL 3/8 TAP	ALL	142	AVGH3 WAND 48" MOLDED NOZZLE HOLDER 3)NOZZLE HOLDER W/GROMETS	ALL
66	ECH75 HEAVY DUTY BEND RESTICTOR-B	ALL	143	DH060 HOSE 3/8 x 50' 5000psi BLU/GRY 25	ALL
67	UPB05 ADAPTER FITTING-BURST DISC***	ALL	144	D8169 HOSE BARB 1 IN H X 3/4 P BRASS	SCU30009KAF,SCU35009VAF
68	UPB80 BURST DISC 8000psi TORQUE 32-4	ALL	145	D1080 PLUG 1/2" BRASS	SCU30009KAF,SCU35009VAF