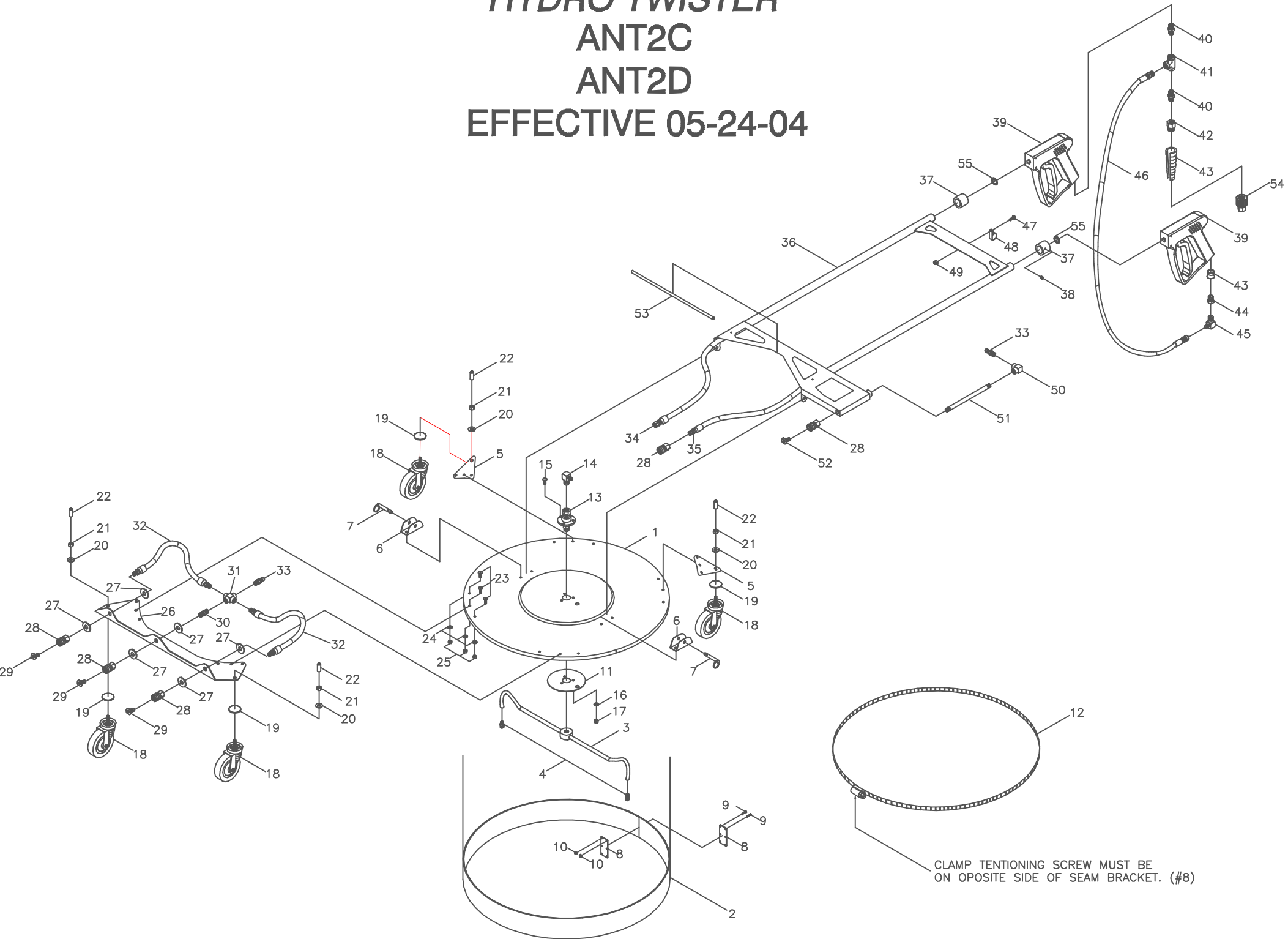


HYDRO TWISTER ANT2C ANT2D EFFECTIVE 05-24-04



CLAMP TENSIONING SCREW MUST BE ON OPOSITE SIDE OF SEAM BRACKET. (#8)

ANT2C-ANT2D PARTS LIST

1	HLC27	TWISTER DECK 27" CONTRACTOR	ANT2C
	HLC28	TWISTER DECK 27" PROFESSIONAL	ANT2D
2	HLR27	BUMPER RUBBER TWISTER 7' 1 EP	ANT2C
	HLH26	SKIRT-27" 18 GA STAINLESS STEEL	ANT2D
	FA008	SCREW #8 x 1/2" HX WASHER HD	ANT2D
3	VAM24	TWISTER ROTOR ARM 24"	ALL
4	NM302	NOZZLE 03x 15 x 1/8 MEG	ALL
5	HLS14	CASTER BRACKET	ALL
6	HLC02	HANDLE PIVOT BRACKET CONTRACTOR	ALL
7	FP378	QUICK RELEASE PIN 3/8" x 1.8in	ALL
8	HLC03	SEAM BRACKET	ANT2C
9	FB101	SCREW 6-32" x 3/4" SS-316 SLT PH	ANT2C
10	FNLS1	NUT LOCK; 6/32" 316 STAINLESS	ANT2C
11	HLC01	BACKUP PLATE	ANT2C
	HLC11	BACKUP PLATE	ANT2D
12	FC048	WORM GEAR CLAMP 2 1/2 X 48"	ANT2C
13	VAM04	TWISTER SWIVEL CARBIDE 4000	ANT2C
	VAD04	DUEBLIN SWIVEL 3/8NPT x 3/8NPT	ANT2D
	HLD20	DUEBLIN SWIVEL MOUNT	ANT2D
14	D5546	STREET EL 3/8"MPT x 1/4"JIC	ALL
15	FB410	BOLT 1/4" x 3/4" TRUSS HD SLT STNL	ANT2C
	FB420	BOLT 1/4" x 1 1/4" SS	ANT2D
16	FWS04	WASHER SAE 1/4" SS 9/32" x 5/8"	ALL
17	FNLS4	NUT LOCK; 1/4"-20 316 STAINLESS	ALL
18	HT300	CASTER 3"DIA x 15/16" TREAD WID	ALL
19	DQ605	O-RING 3/32" x 1 5/8" x 13/16"	ALL
20	FWC05	WAHER CUT 5/16" PLD	ALL
21	FNR06	NUT 3/8"-16 PLD	ALL
22	HLC16	CASTER CAP; TWISTERS 1 .343 BL	ALL
23	FB410	BOLT 1/4" x 3/4" TRUSS HD SLT STNL	ALL
24	FWS04	WASHER SAE 1/4" SS 9/32" x 5/8"	ALL
25	FNLS4	NUT LOCK; 1/4"-20 316 STAINLESS	ALL
26	HLS15	SWEEPER BRACKET-TWISTER 2003 MODELS	ALL
27	FWC09	WASHER CUT 1/2" PLD	ALL
28	DQ04S	COUPLER 1/4" SOCK FEM	ALL
29	NQ204	NOZZLE/QDC 02 x 40	ALL
30	DB504	NIPPLE 1/4" STEEL	ALL
31	DA244	CROSS 1/4" STEEL	ALL
32	DTWO1	HOSE ASSEM. 1/4" x 15" 5000 PSI	ALL
33	DQ04M	COUPLER 1/4" PLUG MALE	ALL
34	DTW04	HOSE ASSEM. 1/4" x 63" 5000PSI	ALL
35	DTW03	HOSE ASSEM. 1/4" x 63" 5000PSI	ALL
36	HLC04	CONTRACTOR TWISTER HANDLE	ANT2C
	HLC10	PROFESSIONAL TWISTER HANDLE	ANT2D
37	HLS10	GUN/TUBING ADAPTER-STEEL	ALL

EFFECTIVE 05-24-04

38	FB312	SET SCREW 5/16" x 3/8" CUP PO	ALL
39	VG200	TRIGGER GUN, INSULATED 4000 PSI	ALL
40	DB506	NIPPLE 3/8" STEEL	ALL
41	DE066	TEE 3/8" STEEL	ALL
42	DQ76F	TWIST COUPLER 3/8" PLUG FEM	ALL
43	ECH75	HEAVY DUTY BEND RESTICTOR	ALL
44	DA064	BUSHING 3/8" x 1/4" STEEL	ALL
45	D5545	STREET EL 1/4"MPT x 1/4"JIC	ALL
46	DTW02	HOSE ASSEM. 1/4" x 42" 5000PSI	ALL
47	FB410	BOLT 1/4" x 3/4" TRUSS HD SLT STNL	ALL
48	FD050	CLAMP 1/2" RUBBER COATED	ALL
49	FNLS4	NUT LOCK; 1/4"-20 316 STAINLESS	ALL
50	DC044	ELL 1/4" STEEL	ALL
51	VW008	WAND 1/4" x 8" STAINLESS STEEL	ALL
52	NQ552	NOZZLE/QDC 055 x 15	ALL
53	HL023	TRIMLOCK 75B-3/x 1/8	ALL
54	DQ76S	TWIST COUPLER 3/8" SOCK FEM	ALL
55	FWT10	WASHER INT TOOTH 5/8" SS*	ALL
	GLL66	LABLE HYDRO TWISTER 10" x 10.75"	ALL