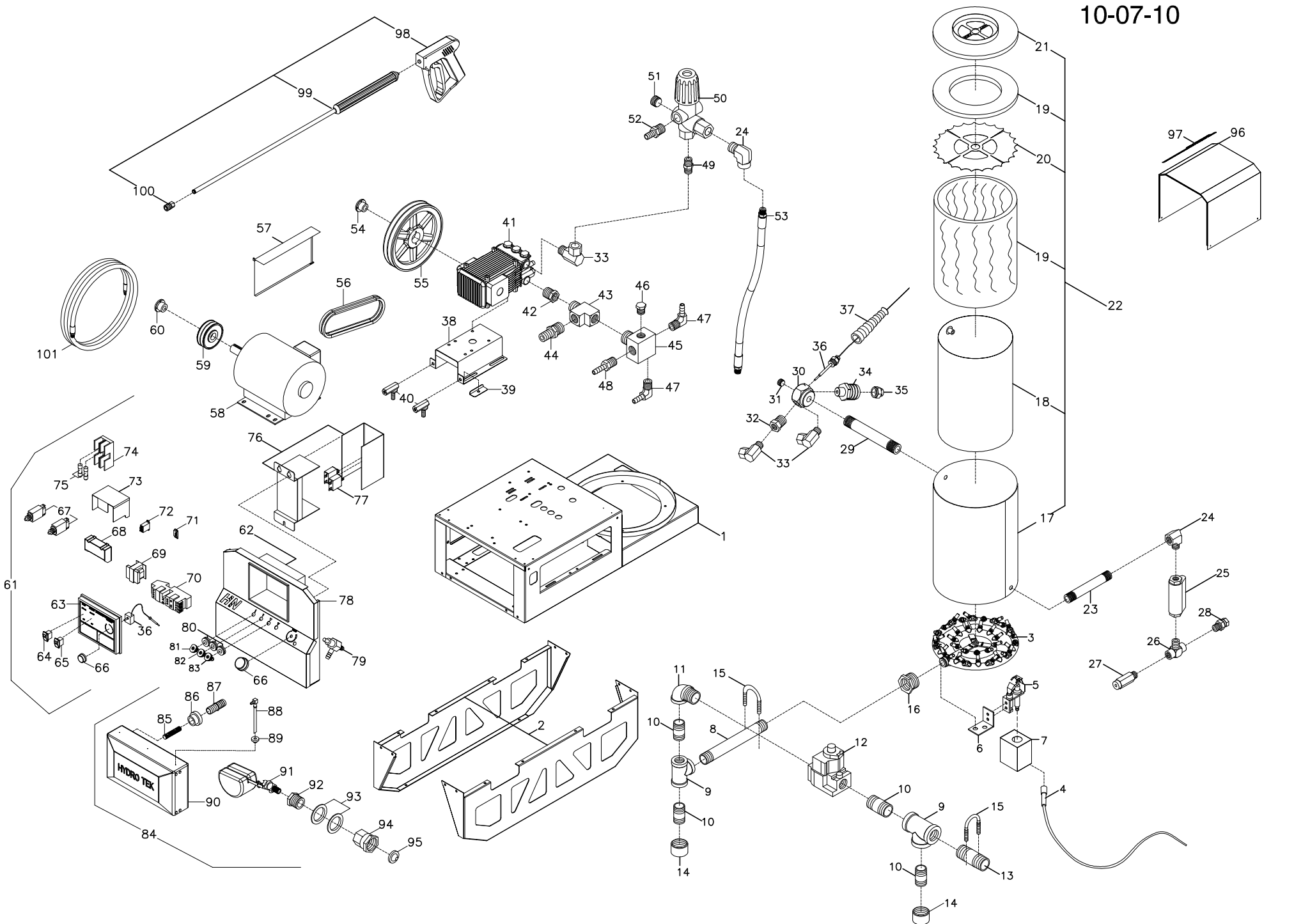


HN PROLINE
HN30008E3H & HN30008E4H
EFFECTIVE S/N 200801565
10-07-10



HN30008E3H & HN30008E4H PARTS LIST

S/N200801565

7-Oct-10

1	HNG48	HN FRAME (2003) P COATED	37	ECH75	HEAVY DUTY BEND RESTICTOR-B	70	EA100	STARTER 230v 3 POLE 9-45 AMP (HN30008E3H)
2	HNG36	LEG EXTENTIONS PAIR HN 2003	38	HPR11	PUMP MOUNT RAIL		EA103	STARTER 230v 3 PH 9-45 AMP (HN30008E4H)
3	BGW88	BURNER RING W/JETS NAT GAS #88	39	HRR07	SUPPORT BRKT- PUMP RAIL	71	EC116	SWITCH, SLIDE 1P2T (HN30008E3H)
4	BGW36	IGNITION WIRE 47" NG/HN ASM				72	ECC08	RELAY; 24 VOLT SPST 50/60Hz
5	BGP10	PILOT ASM. HW.	40	HPR60	PUMP RAIL BOLT	73	HNG08	HN IGNITION MODULE SHIELD
6	HNG32	HN PILOT BRACKET STAINLESS	41	PH803	PUMP 36000 @ 8 1450 RPM	74	EFB02	FUSE BLOCK 2 POLE MINI FUSE (HN30008E4H)
7	HNG33	HN PILOT SHEILD SS HN30008	42	D1128	BUSHING 3/4 X 1/2 BRASS	75	EF025	1/4 AMP MINI FUSE (HN30008E4H)
8	DGN73	NIPPLE 1" X 8" BLACK SCH 40	43	D6588	STREET TEE 1/2 BRASS	76	ECT05	TRANSFORMER 460/230v 100VA (HN30008E4H)
9	DGT16	TEE 1" BLACK	44	D8090	HOSE BARB 5/8X x 1/2 MPT	77	ECF03	3 AMP BREAKERS (HN30008E4H)
			45	HHA05	MINI MANIFOLD BRASS 1/2" M X 1/4	78	HNG46	HN CONTROL PANEL CUT GROUP-PRO
10	DGN60	NIPPLE 1" CLOSE BLACK	46	D1040	PLUG 1/4" BRASS	79	VVC10	CHEMICAL MET VALVE MV-100 MOD.
11	DGE16	STREET ELBOW 1" x 90	47	D8040	HOSE BARB 1/4" 90 ELBOW			
12	BGV12	NATURAL GAS VALVE 1"	48	D8084	HOSE BARB; 1/2H x 1/4 BRASS	80	HLB09	GROMET NOZZLE HOLDER
13	DGN66	NIPPLE 1" X 3" BLACK	49	DB506	NIPPLE 3/8 STEEL	81	NQ452	NOZZLE 045 x 15
14	DGPC3	PIPE CAP 1" BLACK				82	NQ452	NOZZLE 045 x 15
15	FB995	U BOLT 1/4"-20 FOR 1" GAS PIPE	50	UU323	UNLOADER 4350SI 8GPM AR	83	NQ854	NOZZLE 085 x 40
16	DGR14	BUSHING 1 1/4M X 1F BLK PIPE	51	D1061	PLUG 3/8" HEX HEAD FLUSH STEEL	84	WT052	FLOAT TANK ASM HN30008
17	B2356	COIL WRAP 24" VERT	52	D8068	HOSE BARB 1/2H X 3/8P BRASS	85	VF050	STRAINER TUBE FOR FLOAT TANK
18	BC88V	8 PK SCH80 24" 1/2" PIPE	53	DH038	HOSE 1/2" X 36" 3500 PSI NO WIP	86	DFF10	WATER TANK BUSHING 5/8"
19	BN053	INSUL BLKT 50SQ' 1/2 X 24 8# 25'	54	KSH19	BUSHING H24MM	87	D1010	SPLICER 5/8 BRASS
			55	KU100	SHEAVE 2BK 100H	88	DF599	FUEL TANK ADAPTER W/PLASTIC TUBE
20	HHN27	HN INSULATION RETAINING RING	56	KSB42	BELT BX42	89	DFF04	FUEL TANK GROMET
21	B0033	HN COIL CAP FLAT HN30008 (2005)	57	HNG65	BELT GUARD HN30008			
22	BC797	COIL ASM HN30008 FLAT CAP	58	ME906	MOTOR 15 HP 3510-208-230/460 3P	90	WT040	TANK; FLOAT 4 GAL HD LINEAR
23	BC865	BURNER NIPPLE; 1/2" X 6.5" SCH 80	59	KU040	SHEAVE 2BK 40H	91	VVF15	FLOAT VALVE ROBERTSON
24	DE586	STREET ELL 1/2 F x 3/8 M STEEL				92	D1128	BUSHING 3/4 x 1/2 BRASS
25	VS005	FLOW SWITCH 8e4200 ST5	60	KSH20	BUSHING HX 1 3/8 x 5/16	93	FW700	WASHER LOCK 1" GALV***
26	DEB66	BRANCH TEE 3/8 STEEL	61	EHN30	HN COMBO BOX HN30008E3/E8	94	D012F	GARDEN H A 3/4 NPT FEM
27	UP137	PRESSURE RELIEF 3700 PSI			230v 3PH 208 3PH (HN30008E3H)	95	D0021	SCREEN WASHER GARDEN H A
28	DE868	SWIVEL 3/8M X 1/2FS		EHN31	HN COMBO BOX HN30008E4 460v 3PH (HN30008E4H)	96	HNG47	HN SWING UP COVER-(2003)
29	BC835	BURNER NIPPLE; 1/2" X 3.5" SCH 80	62	EWB72	ELECTRICAL BOX 10 X 8 X 6 HINGED	97	GLL95	LABEL PRO LINE 3.125 X 21.875
			63	GLL94	LABLE CON BOX HN 5MIL 9.25 X 7	98	VG200	TRIGGER GUN, INSULATED 4000PSI
30	HHA01	HEX MANI OUTLET 1/2" X 1/2" X REEL	64	EC421	ROCKER SWITCH 230V CLEAR SPST	99	VW045	WAND 1/4" X 48" MOLDED GRIP
31	D1082	PLUG 1/2" FLUSH HEAD HEX SOCKET	65	EC406	ROCKER SWITCH 24V RED SPST			
32	DA086	BUSHING 1/2 X 3/8 STEEL	66	ECH72	KNOB; RED .25id X 1.50od	100	DQ04S	COUPLER 1/4" SOCK FEM
33	DE866	SWIVEL 3/8F x 3/8M 90	67	EFC05	CIRCUIT BREAKER 1/2 AMP (HN30008E3H)	101	DH050	HOSE 3/8" X 50' 3,000 PSI 250F
34	UPB05	ADAPTER FITTING-BURST DISC	68	BGG15	IGNITION MODULE HW 90 SECOND			
35	UPB80	BURST DISC 8000 PSI TORQUE 32-4	69	BGT10	TRANFORMER 120/230-24V 40VA**			
36	ECH55	THERMOSTAT; 95-195**						
							OPTIONAL	
	BGV06	NG TO LP COVERION INSTALL 700K						