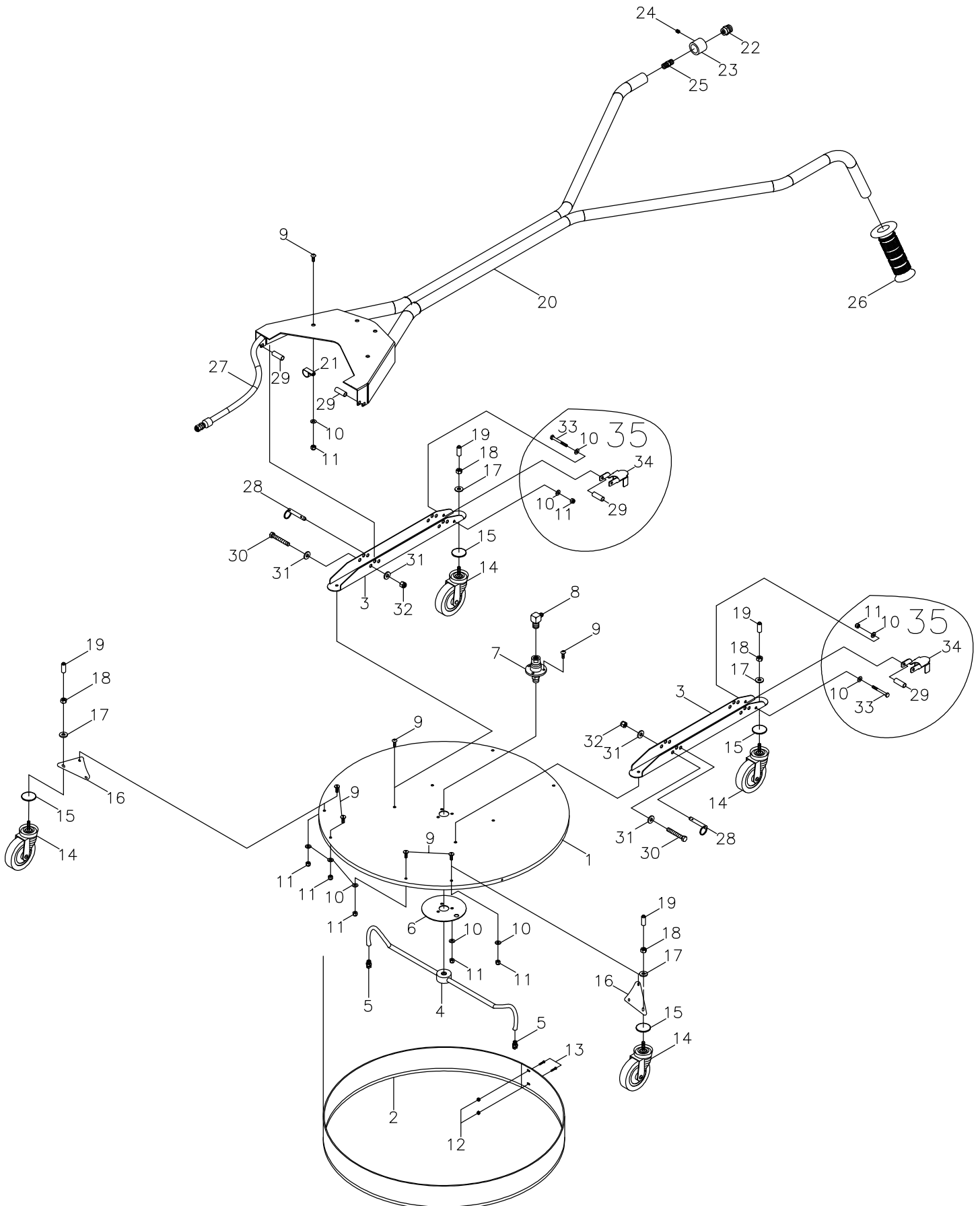


# HYDRO TWISTER

## ANT29

EFFECTIVE 04-07-08



# ANT29 PARTS LIST

|    |         |   |     |
|----|---------|---|-----|
| 1  | HLS28-1 | FLAT DECK ANT28                           | ALL |
| 2  | HLH29   | SKIRT 28" FOR ANT28 18 GA STAINLESS       | ALL |
| 3  | HLS33   | HANDLE-CASTER BRACKET ANT28, ANT29, ANT3C | ALL |
| 4  | VAM25   | TWISTER ROTAR ARM 26.25" BENT             | ALL |
| 5  | NM252   | NOZZLE 025 x 15 x 1/8 MEG                 | ALL |
| 6  | HLC01   | BACKUP PLATE                              | ALL |
| 7  | VAM04   | TWISTER SWIVEL CARBIDE 4000               | ALL |
| 8  | D5546   | STREET ELL 3/8"MPT x 1/4"JIC              | ALL |
| 9  | FB410   | BOLT 1/4" x 3/4" PHIL HD SLT STNL         | ALL |
| 10 | FWS04   | WASHER SAE 1/4"SS 9/32" x 5/8"            | ALL |
| 11 | FNLS4   | NUT LOCK; 1/4-20 316 STAINLESS            | ALL |
| 12 | FNLS1   | NUT LOCK; 6/32 316 STAINLESS              | ALL |
| 13 | FB102   | SCREW 6/32 x 1/2" SS SLT PAN HD           | ALL |
| 14 | HT300   | CASTER 3DIA x 15/16" TREAD WIDTH          | ALL |
| 15 | DQ605   | O-RING 3/32 x 1 5/8 x 13/16               | ALL |
| 16 | HLS32   | CASTER BRACKET-TWISTER 2006 2 MNT HOLES   | ALL |
| 17 | FWC05   | WASHER CUT 5/16" PLD                      | ALL |
| 18 | FNR06   | NUT 3/8-16 PLD                            | ALL |
| 19 | HLC16   | CASTER CAP; TWISTERS 1 .343 BL            | ALL |
| 20 | HLS31   | HANDLE ASSEMBLY ANT28                     | ALL |
| 21 | FD075   | CLAMP 3/4" RUBBER COATED                  | ALL |

# EFFECTIVE 04-07-08

|    |       |   |          |
|----|-------|---|----------|
| 22 | DQ74F | TWIST COUPLER 1/4 PLUG FEM-SUT              | ALL      |
| 23 | HLS10 | GUN/TUBING ADAPTER-STEEL                    | ALL      |
| 24 | FB312 | SET SCREW 5/16 x 3/8 CUP PO                 | ALL      |
| 25 | DB504 | NIPPLE 1/4" STEEL                           | ALL      |
| 26 | HL010 | HAND GRIP 1in MX                            | ALL      |
| 27 | DTW04 | HOSE ASSEM. 1/4" x 63" 5000psi              | ALL      |
| 28 | FP378 | QUICK RELEASE PIN 3/8" x 1.8"               | ALL      |
| 29 | HSC44 | HANDLE PIVOT BOLT SPACER SS                 | ALL      |
| 30 | FB641 | BOLT 3/8" x 2 1/2" PLD ALL-THREAD           | ALL      |
| 31 | FWC05 | WASHER CUT 5/16 PLD*                        | ALL      |
| 32 | FNL06 | NUT-LOCK 3/8"-16 PLD                        | ALL      |
| 33 | FB436 | BOLT 1/4" x 2 1/2" STAINLESS STEEL          | OPTIONAL |
| 34 | HLS26 | RIDGID CASTER BRACKET                       | OPTIONAL |
| 35 | ACT00 | RIDGID CASTER BRACKET KIT                   | OPTIONAL |
|    | GLL66 | LABEL HYDRO TWISTER 10 x 10.75<br>NOT SHOWN | ALL      |