



## Foamer

**Model** 32017  
Without Bottle

**Model** 39234  
With 1 Liter Bottle

**Model** 39196  
With 2 Liter Bottle

### FEATURES

- Durable stainless steel orifice and FPM o-rings for chemical compatibility.
- Optional bottle sizes for specialized needs.
- Convenient chemical injector adjustment knob or handle for adjusting chemical draw.
- Lightweight and compact style with comfortable grip.

### SPECIFICATIONS

	U.S. Measure	Metric Measure
Maximum Flow .....	6.5 GPM	(25 L/M)
Maximum Pressure .....	2900 PSI	(200 BAR)
Maximum Temperature .....	140°F	(60°C)
Inlet Port .....	1/4 BSPF	(1/4 BSPF)
Weight (32017) .....	13 oz	(0.37 kg)
Weight (39234) .....	17.5 oz	(0.50 kg)
Weight (39196) .....	19.1 oz	(0.54 kg)
Dimensions (32017) .....	11.99 x 2.75"	(304.5 x 70 mm)
Dimensions (39234) .....	12.54 x 10.6"	(318.5 x 269 mm)
Dimensions (39196) .....	13.16 x 12.2"	(334.3 x 309 mm)

Foamer is stamped with a European safety pressure. Use only at above specifications to assure proper foamer life and performance.

#### **⚠ CAUTIONS AND WARNINGS**

All High Pressure Systems require a primary pressure regulating device (i.e. regulator, unloader) and a secondary pressure safety relief device (i.e. pop-off valve, safety valve, relief valve). Failure to install such relief devices could result in personal injury or damage to pump or property. CAT PUMPS does not assume any liability or responsibility for the operation of a customer's high pressure system.

Read all CAUTIONS and WARNINGS before commencing service or operation of any high pressure system. The CAUTIONS and WARNINGS are included in each service manual and with each Accessory Data Sheet. CAUTIONS and WARNINGS can also be viewed online at [www.catpumps.com/cautions-warnings](http://www.catpumps.com/cautions-warnings) or can be requested directly from CAT PUMPS.

**SELECTION:** Select a foamer to match your system flow and pressure requirements and function being performed.

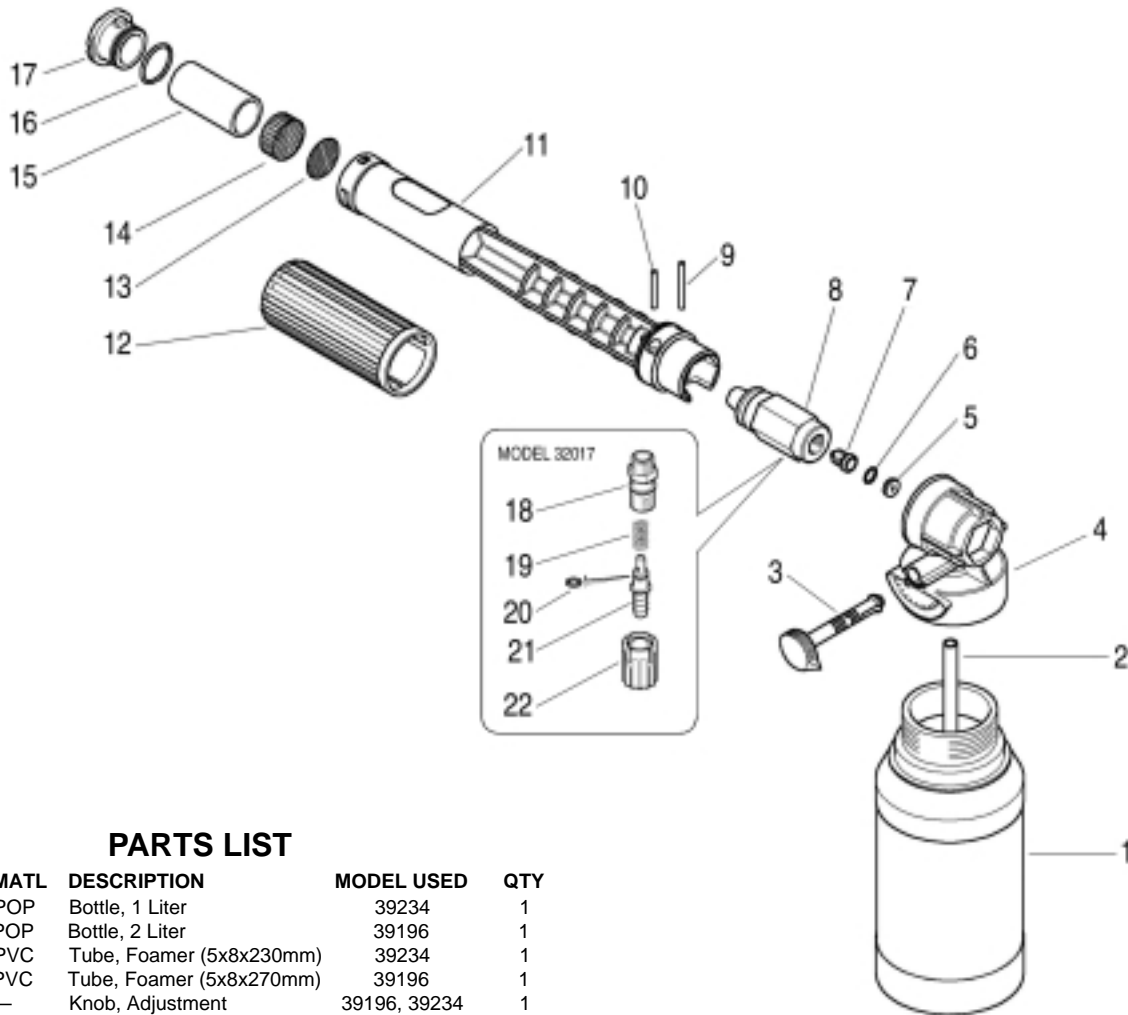
**INSTALLATION:** Install foamer onto any 1/4" fitted gun. Use PTFE thread tape or pipe thread sealant to assure an airtight fit. Attach tube to bottom of adjustable barb under the bottle cover.

**OPERATION:** Fill bottle with chemical and replace lance assembly. Squeeze the trigger on the gun to allow flow through the foamer. Foamer will draw air from the foamer nozzle as long as there is a minimum of 870 psi in the discharge line of the pump. To vary the amount of chemical draw, use the adjustment knob on Models 39196 and 39234. For Model 32017, use the adjustment handle.

**MAINTENANCE:** Periodically inspect the injector housing diaphragm and foamer pill and clean as needed to avoid restricted flow through the foamer nozzle. Inspect o-rings for cuts or deterioration and replace as needed. Examine orifice for wear and replace as needed.

*“Customer confidence is our greatest asset”*

# EXPLODED VIEW



## PARTS LIST

ITEM	P/N	MATL	DESCRIPTION	MODEL USED	QTY
1	—	POP	Bottle, 1 Liter	39234	1
	39391	POP	Bottle, 2 Liter	39196	1
2	—	PVC	Tube, Foamer (5x8x230mm)	39234	1
	39392	PVC	Tube, Foamer (5x8x270mm)	39196	1
3	31549	—	Knob, Adjustment	39196, 39234	1
4	—	—	Holder, Bottle	39196, 39234	1
5	33217	BB	Retainer, Nozzle	All Models	1
6	33216	NBR	O-Ring, Insert	All Models	1
7	32071	SSS	Orifice (1.5mm)	All Models	1
8	—	BB	Housing, Injector	32017	1
	—	BB	Housing, Injector	39196, 39234	1
9	—	BB	Pin (5mm)	39196, 39234	1
10	39291	BB	Pin (5mm)	32017	2
11	—	—	Lancer, Foamer	All Models	1
12	39286	NY	Grip, Foamer	All Models	1
13	39288	S	Diaphragm, Foamer	All Models	1
14	39289	S	Pill, Foamer	All Models	1
15	39290	NY	Spacer, Foamer	All Models	1
16	33568	FPM	O-Ring, Foamer Nozzle	All Models	1
17	39287	NY	Nozzle, Foamer	All Models	1
18	33946	BB	Retainer, Injector	32017	1
19	33500	S	Spring	32017	1
20	33955	FPM	O-Ring, Barb	32017	1
21	32941	BB	Barb, Adjustment	32017	1
22	33949	NY R	Handle, Adjustment	32017	1

*Italics are optional items.* R Components comply with RoHS Directive.  
 Material Codes (Not Part of Part No.): BB=Brass FPM=Fluorocarbon  
 NBR=Medium Nitrile (Buna-N) NY=Nylon POP=Polypropylene  
 PVC=Polyvinyl Chloride S=304SS SSS=416SS

## TROUBLESHOOTING

No chemical draw

- Replace adjustable barb.
- Change nozzle.
- Clean diaphragm and foamer pill.

Leaking around adjustment handle

- O-ring worn.
- Foreign material in foamer.

Leaking at gun connection

- Check injector housing for proper sealant and reconnect gun

## WARRANTY

### 90 Day Warranty

Refer to complete CAT PUMPS Warranty for further information.

## World Headquarters

### CAT PUMPS

1681 - 94th Lane N.E. Minneapolis, MN 55449-4324

Phone (763) 780-5440 — FAX (763) 780-2958

e-mail: techsupport@catpumps.com

www.catpumps.com

## International Inquiries

FAX (763) 785-4329

e-mail: intlsales@catpumps.com



The Pumps with Nine Lives

## CAT PUMPS (U.K.) LTD.

1 Fleet Business Park, Sandy Lane, Church Crookham

FLEET, Hampshire, GU52 8BF, England

Phone Fleet 44 1252-622031 — Fax 44 1252-626655

e-mail: sales@catpumps.co.uk www.catpumps.co.uk

## N.V. CAT PUMPS INTERNATIONAL S.A.

Heiveldkens 6A, B-2550 Kontich, Belgium

Phone 32-3-450.71.50 — Fax 32-3-450.71.51

e-mail: cpi@catpumps.be www.catpumps.be

## CAT PUMPS DEUTSCHLAND GmbH

Buchwiese 2, D-65510 Idstein, Germany

Phone 49 6126-9303 0 — Fax 49 6126-9303 33

e-mail: catpumps@t-online.de www.catpumps.de